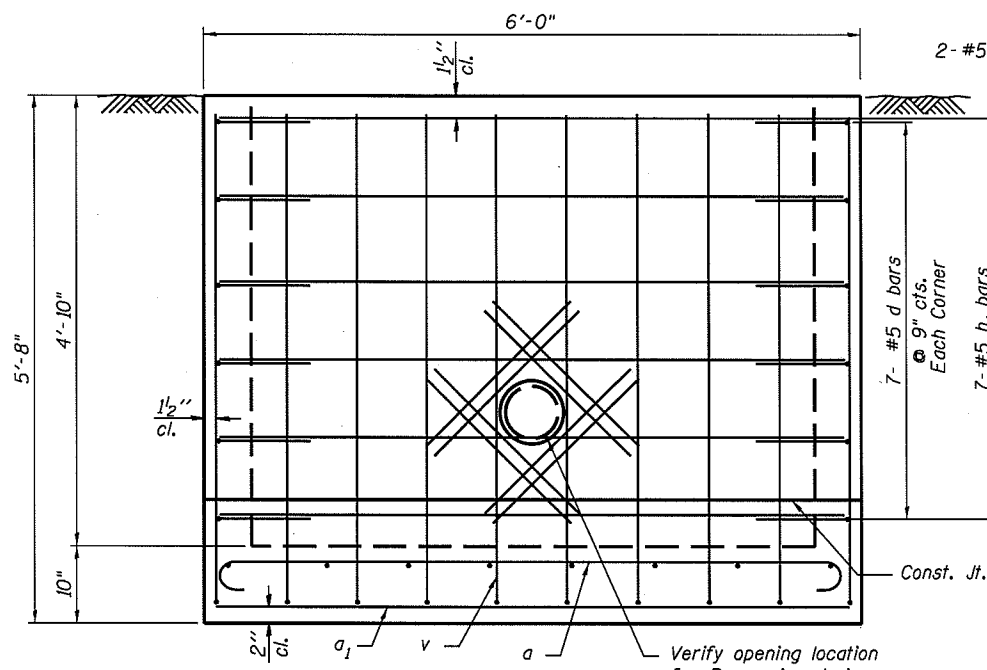
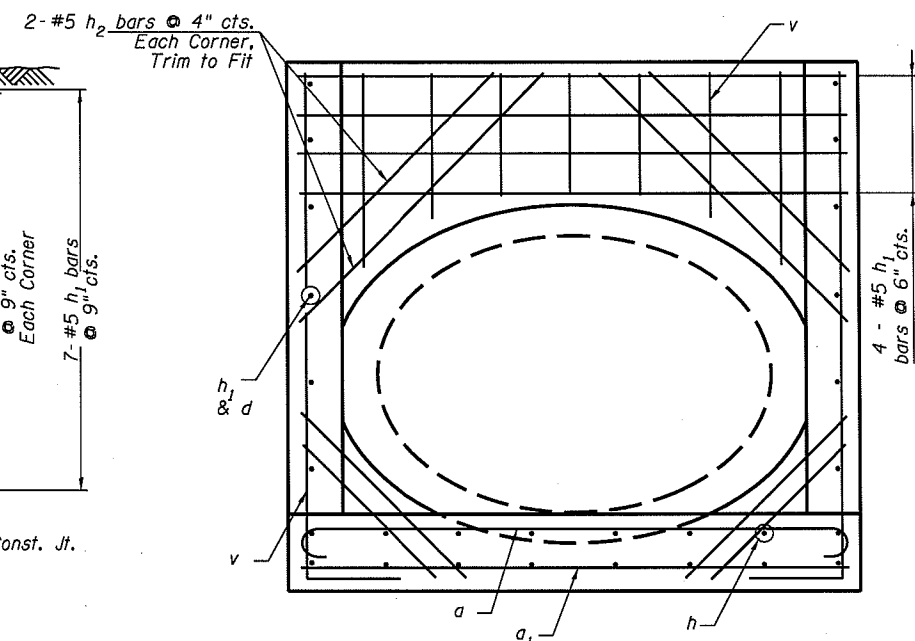


SECTION A-A

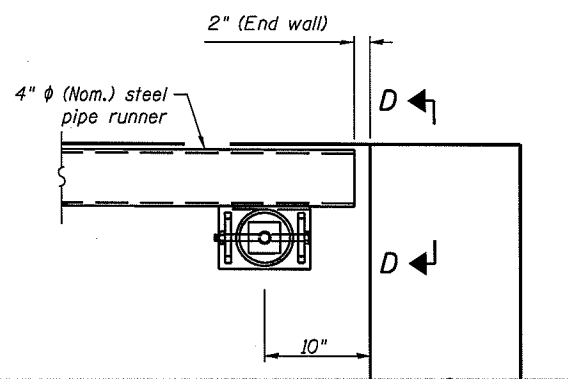


VIEW B-B

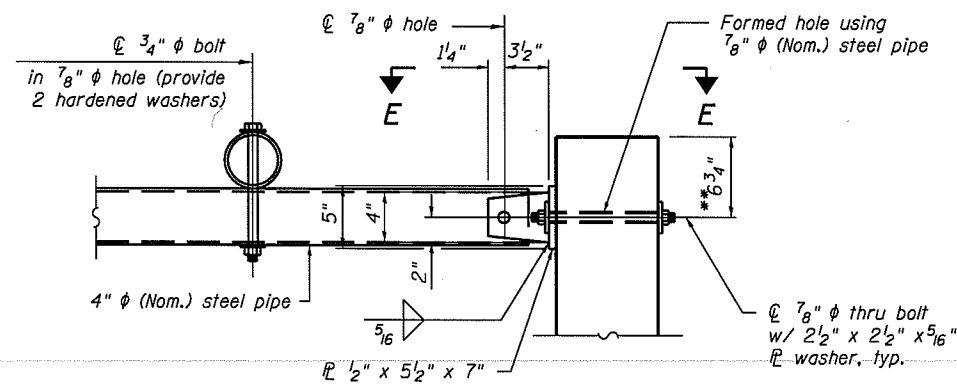


SECTION C-C

Trim a, h, v, and h₂ bars around pipe opening

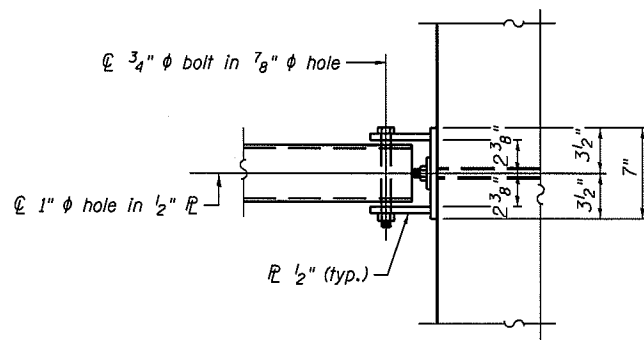


DETAIL A

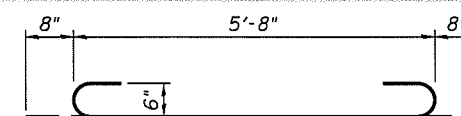


SECTION D-D

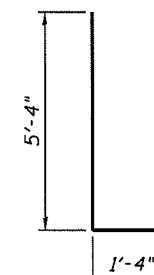
** Measured perpendicular to top of sidewall. In addition, formed hole shall be located a minimum of 6" measured horizontally from any vertical joints necessary for construction of the culvert extension with drop box.



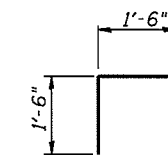
VIEW E-E



BAR a



BAR v



BAR d

BILL OF MATERIAL
(For Information Only)

Bar	No.	Size	Length	Shape
a	12	#5	7'-0"	┌───┐
a ₁	9	#5	5'-8"	───
d	28	#5	3'-0"	└──┘
h	14	#4	5'-8"	───
h ₁	25	#5	5'-8"	───
h ₂	8	#5	3'-11"	───
h ₃	8	#5	3'-0"	───
v	32	#5	6'-8"	└──┘
DESCRIPTION				
			UNIT	QTY.
* Concrete Structures			Cu. Yd.	2.8
* Reinforcement Bars			Pound	710
** 4" Galv. Steel Pipe			3 @	4'-8"
** 3/4" Galv. Steel Bolts			Each	2
** Side Assembly			Each	4

* Included in Drop Box, No. 3

** Included in Traversable Pipe Grates with all hardware and steel for Assemblies

\\hrgreen\data\CAD\193220J14\CAD_Sheets\64F25_Details_No 3.dgn



USER NAME = STLCDesignConsultant
DESIGNED - KJB
CHECKED - DFM
DRAWN - KJB
PLOT DATE = 10/11/2012

REVISI...
REVISI...
REVISI...
REVISI...

STATE OF ILLINOIS
DEPARTMENT OF TRANSPORTATION

DETAILS
DROP BOX NO. 3

SHEET NO. 5-2 OF 5-2 SHEETS

F.A.S. RTE.	SECTION	COUNTY	TOTAL SHEETS	SHEET NO.
226	(3T & 3) BR-1	HENRY	210	69
			CONTRACT NO. 64F25	
ILLINOIS FED. AID PROJECT				