

STATE OF ILLINOIS
DEPARTMENT OF TRANSPORTATION
DIVISION OF HIGHWAYS

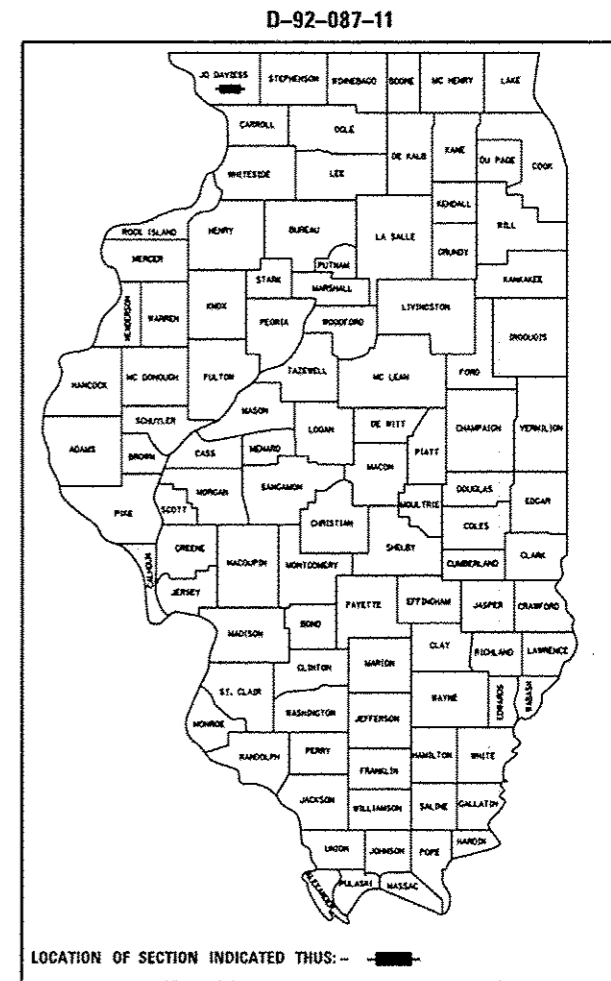
**PROPOSED
HIGHWAY PLANS**

FAP ROUTE 301 (US 20)
SECTION 29T-2
PROJECT: NHPP-0301(075)
REMOVAL & REPLACEMENT OF
CONCRETE BOX CULVERT ALONG US 20
JO DAVIESS COUNTY

C-92-077-12

F.A.P. RTE.	SECTION	COUNTY	TOTAL SHEETS	SHEET NO.
301	29T-2	JO DAVIESS	52	1
ILLINOIS CONTRACT NO. 64H17				

FOR INDEX OF SHEETS, SEE SHEET NO. 2
FOR STATE STANDARDS SEE SHEET NO. 2

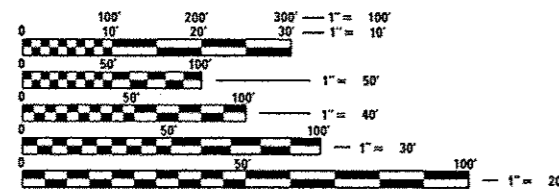


SECTION IMPROVEMENT
BEGINS STA 882+25

R 1 W - 1 E

SECTION IMPROVEMENT
ENDS STA 869+75

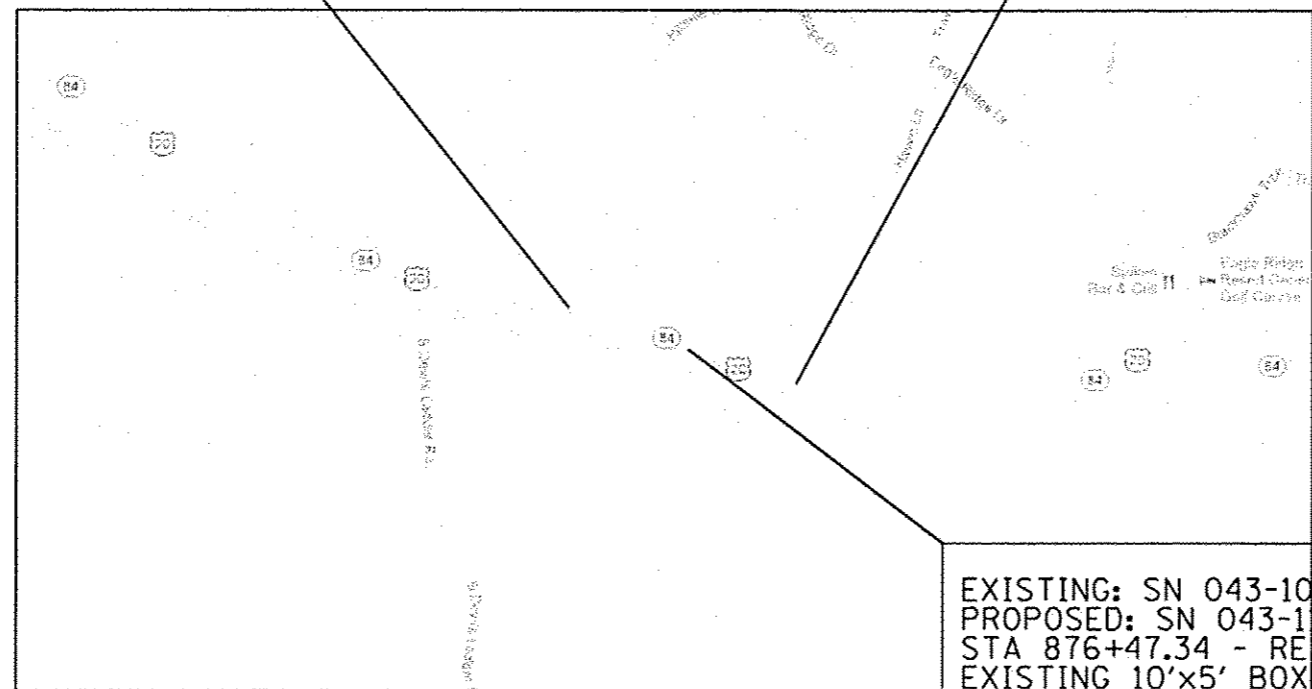
EAST GALENA TOWNSHIP
SECTION 36



FULL SIZE PLANS HAVE BEEN PREPARED USING STANDARD
ENGINEERING SCALES. REDUCED SIZED PLANS WILL NOT
CONFORM TO STANDARD SCALES. IN MAKING MEASUREMENTS
ON REDUCED PLANS, THE ABOVE SCALES MAY BE USED.

J.U.L.I.E.
JOINT UTILITY LOCATION INFORMATION FOR EXCAVATION
1-800-892-0123
OR 811

T 28 N



EXISTING: SN 043-1015
PROPOSED: SN 043-1113
STA 876+47.34 - REMOVE
EXISTING 10'x5' BOX CULVERT
(88'-0") AND CONSTRUCT A
PRECAST 10'x5' BOX
CULVERT (114'-0")

PROJECT ENGINEER VAL LYKHOLAP PHONE# (815) 284-5933
PROJECT MANAGER MASOOD AHMAD

GROSS LENGTH = 1250 FT. = 0.24 MILE
NET LENGTH = 1250 FT. = 0.24 MILE

STATE OF ILLINOIS
DEPARTMENT OF TRANSPORTATION
DIVISION OF HIGHWAYS

SUBMITTED DEC 10 20 21
Paul A. Roetz
DEPUTY DIRECTOR OF HIGHWAYS, REGION ENGINEER

Feb 1 20 13
Jim D. Baranzelli PE/PA
ENGINEER OF DESIGN AND ENVIRONMENT

Feb 1 20 13
Omer Osman PE/PA
DIRECTOR OF HIGHWAYS, CHIEF ENGINEER

PRINTED BY THE AUTHORITY
OF THE STATE OF ILLINOIS

DISTRICT 2, DIXON

CONTRACT NO. 64H17

JO DAVIESS COUNTY SECTION 29T-2 F.A.P. 301 (US 20)