

**PRECAST BARREL DETAILS**  
**US 20 /IL RTE 84**  
**F.A.P. RTE 301 SECTION 29T-2**  
**JO DAVIESS COUNTY**  
**STA. 876 + 47**

**GENERAL NOTES**

Precast Concrete Box Culvert sections shall conform to the requirements of Article 540.06 of the Standard Specifications and the applicable requirements of AASHTO C 1577.

The minimum concrete strength shall be 5,000 psi.

Lifting holes shall be filled with concrete plugs and mastic after box sections are in place.

FILL = 6.2 ft. Min to 7.6' Max.

**REQUIRED AASHTO STEEL AREAS (in<sup>2</sup>/ft.)**

A<sub>S1</sub> 0.32  
A<sub>S2</sub> 0.33  
A<sub>S3</sub> 0.34  
A<sub>S4</sub> 0.24

**DESIGN LOADING**  
**HL-93**

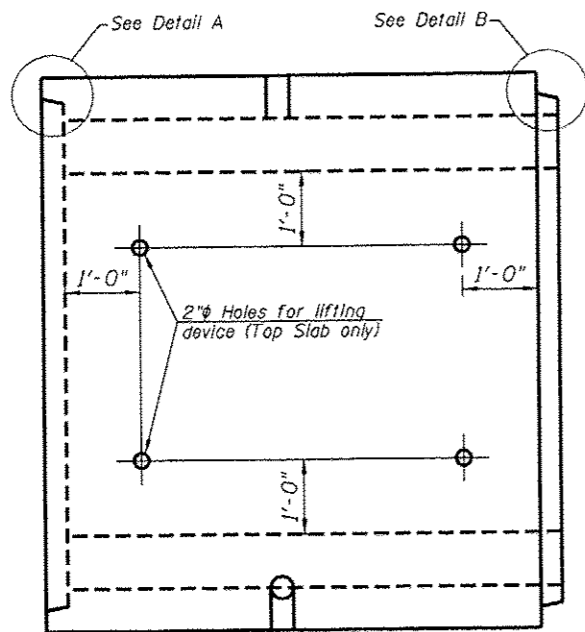
**REINFORCEMENT PROVIDED AREA**

(To be filled out during construction) (in<sup>2</sup>/ft.)

A<sub>S1</sub> --- x --- W --- x W --- = ---  
A<sub>S2</sub> --- x --- W --- x W --- = ---  
A<sub>S3</sub> --- x --- W --- x W --- = ---  
A<sub>S4</sub> provided b A<sub>S3</sub> and A<sub>S3</sub>

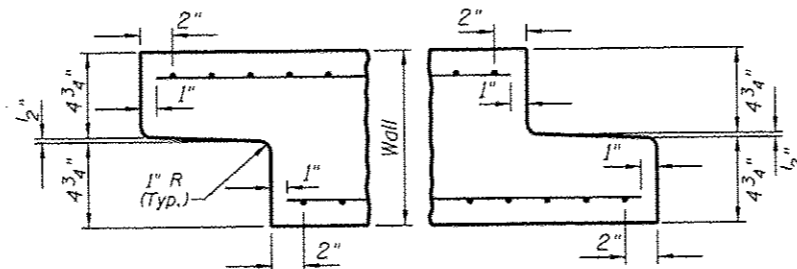
**BILL OF MATERIAL**

ITEM	UNIT	TOTAL
Precast Concrete Box Culvert 10' x 5'	Ft.	114



**PLAN**

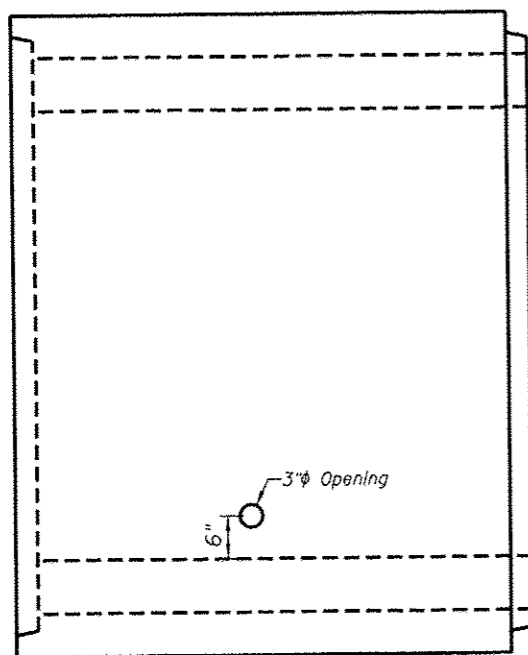
Location of lifting holes may be varied as needed to clear reinforcement.



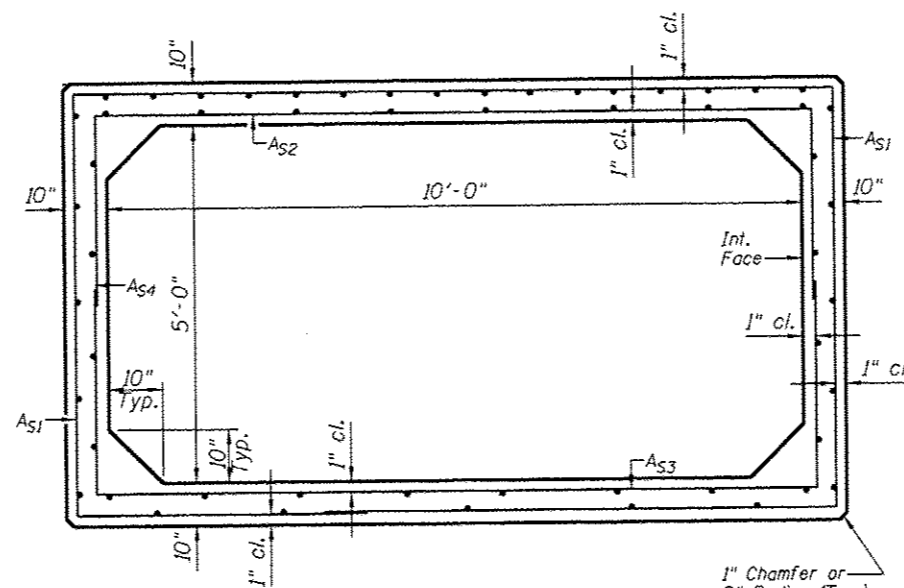
**DETAIL A**  
(Typ. Inlet End)

**DETAIL B**  
(Typ. Outlet End)

Note: Inlet and outlet ends shall be compatible. End details are subject to variation by fabricator.



**ELEVATION**



**CROSS SECTION**



USER NAME - Jamie Shaw	DESIGNED - SAB	REVISED -
WES JOB # - 2120114	DRAWN - BDS BEH	REVISED -
PLOT SCALE - 1/8" = 1'-0"	CHECKED - DB	REVISED -
PLOT DATE - 12/7/2012	DATE - 12/07/2012	REVISED -

**STATE OF ILLINOIS**  
**DEPARTMENT OF TRANSPORTATION**

**BOX CULVERT DETAILS STA. 879 + 47**  
**PRECAST BARREL DETAILS**

SHEET 2 OF 7 SHEETS STA. 876+47

F.A.P. RTE. 301	SECTION 29T-2	COUNTY JO DAVIESS	TOTAL SHEETS 52	SHEET NO. 22
ILLINOIS FED. AID PROJECT			CONTRACT NO. 64H17	