

F.A.I. RTE.	SECTION	COUNTY	TOTAL SHEETS	SHEET NO.
39	D2 Deck Repair 2013-3	OGLE	18	1
FED. ROAD DIST. NO.	ILLINOIS	CONTRACT NO. 64H95		

INDEX OF SHEETS:

1. COVER SHEET
2. SUMMARY OF QUANTITIES, GENERAL NOTES
3. TRAFFIC CONTROL
4. DISTRICT STANDARDS MAXIMUM WIDTH
- 5 - 7 TYPICAL PAVEMENT MARKINGS
- 8 - 10 EXISTING BRIDGE PLANS, FOR INFORMATION ONLY
- 11 -18 BRIDGE REPAIR PLANS

HIGHWAY STANDARDS:

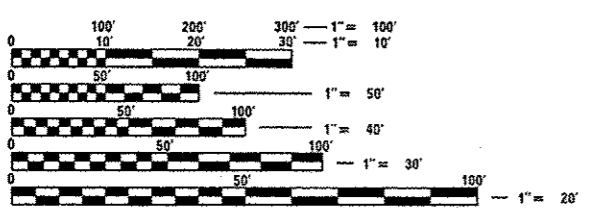
- 701101-03 OFF-RD OPERATIONS, MULTILANE, 15' (4.5 m) TO 24" (600 mm) FROM PAVEMENT EDGE
- 701400-06 APPROACH TO LANE CLOSURE, FREEWAY/EXPRESSWAY
- 701401-07 LANE CLOSURE FREEWAY/EXPRESSWAY
- 701402-09 LANE CLOSURE, FREEWAY/EXPRESSWAY, WITH BARRIER
- 701411-00 LANE CLOSURE, MULTILANE, AT ENTRANCE OR EXIT RAMP, FOR SPEEDS > 45 MPH
- 701426-05 LANE CLOSURE, MULTILANE, INTERMITTENT OR MOVING OPER., FOR SPEEDS > 45 MPH
- 701901-02 TRAFFIC CONTROL DEVICES
- 704001-07 TEMPORARY CONCRETE BARRIER
- 720011-01 METAL POSTS FOR SIGNS, MARKERS & DELINEATORS
- 728001-01 TELESCOPING STEEL SIGN SUPPORT
- 729001-01 APPLICATIONS OF TYPES A & B METAL POSTS (FOR SIGNS & MARKERS)

DISTRICT STANDARDS:

- 39.2 INFORMATIONAL WARNING SIGNS (FOR NARROW TRAVEL LANES)
- 41.1 TYPICAL PAVEMENT MARKINGS

PROJECT LOCATION

SN: 071- 0048
SN: 071- 0049



FULL SIZE PLANS HAVE BEEN PREPARED USING STANDARD ENGINEERING SCALES. REDUCED SIZED PLANS WILL NOT CONFORM TO STANDARD SCALES. IN MAKING MEASUREMENTS ON REDUCED PLANS, THE ABOVE SCALES MAY BE USED.

J.U.L.I.E.
JOINT UTILITY LOCATION INFORMATION FOR EXCAVATION
1-800-892-0123
OR 811

PROJECT ENGINEER: Mahmoud Etemadi (815)-284-5393

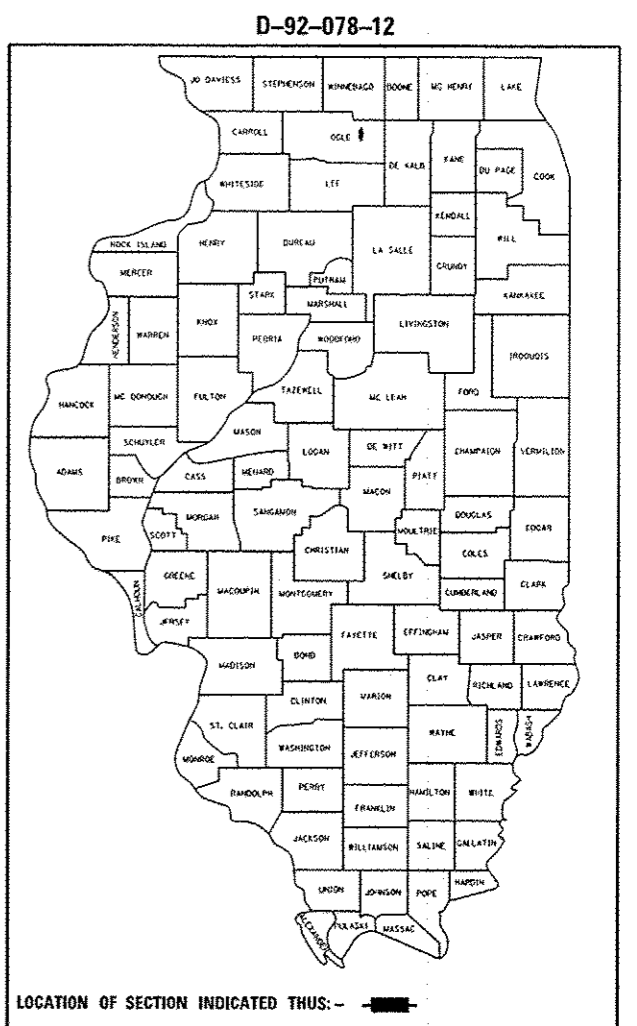
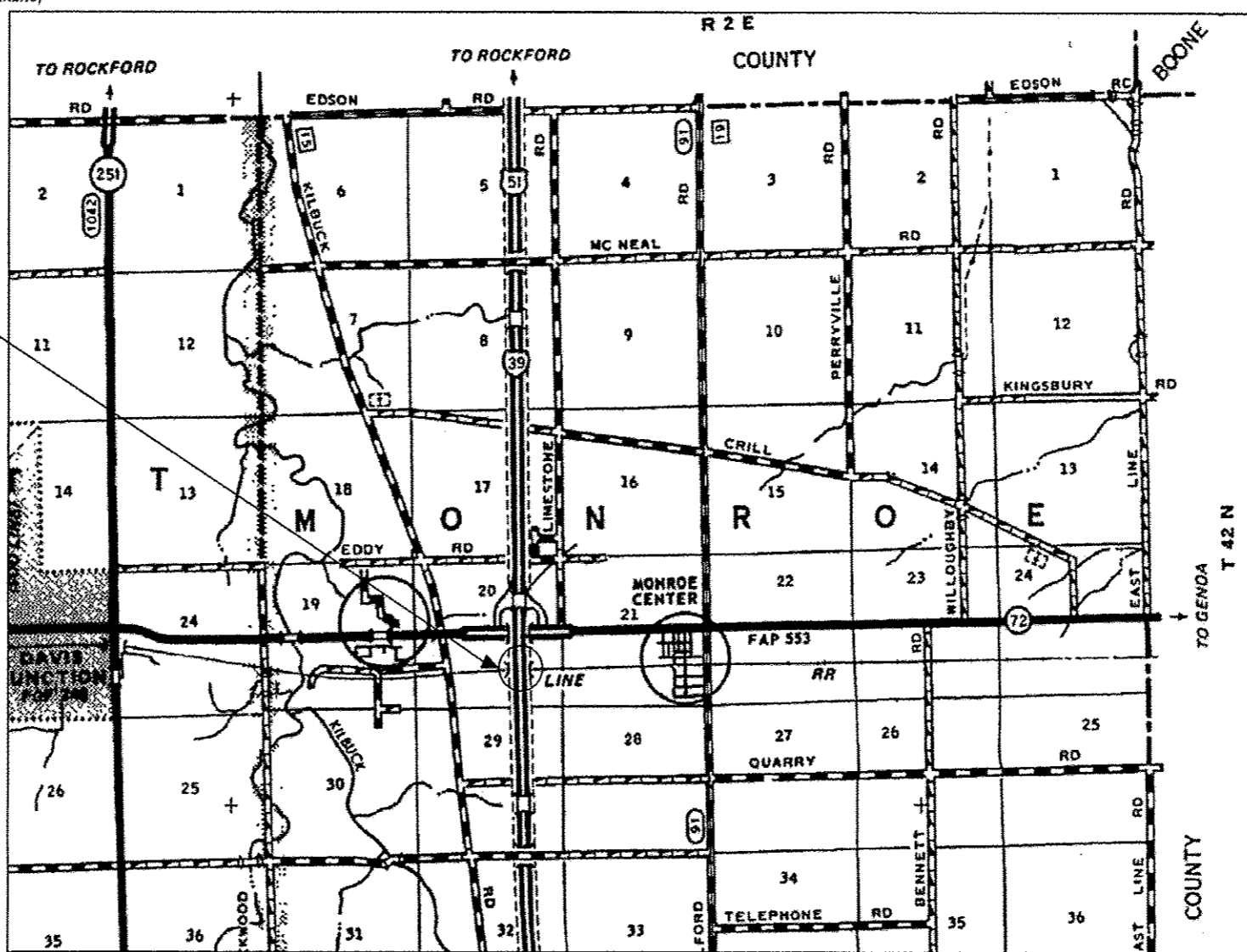
MONROE TOWNSHIP, SECTION 20

CONTRACT NO. 64H95

STATE OF ILLINOIS
DEPARTMENT OF TRANSPORTATION
DIVISION OF HIGHWAYS
PROPOSED
HIGHWAY PLANS

FAI ROUTE 39 (I-39)
SECTION D2 Deck Repair 2013-3
OGLE COUNTY
C-92-006-13

R 2E



T 42N

STATE OF ILLINOIS
DEPARTMENT OF TRANSPORTATION
DIVISION OF HIGHWAYS

SUBMITTED 1-28 2013
Paul Koester
DEPUTY DIRECTOR OF HIGHWAYS, REGION ENGINEER

Feb 1 2013
John D. Baranzelli P.E.
ENGINEER OF DESIGN AND ENVIRONMENT

Feb 1 2013
Omer Osman P.E.
DIRECTOR OF HIGHWAYS, CHIEF ENGINEER

**PRINTED BY THE AUTHORITY
OF THE STATE OF ILLINOIS**