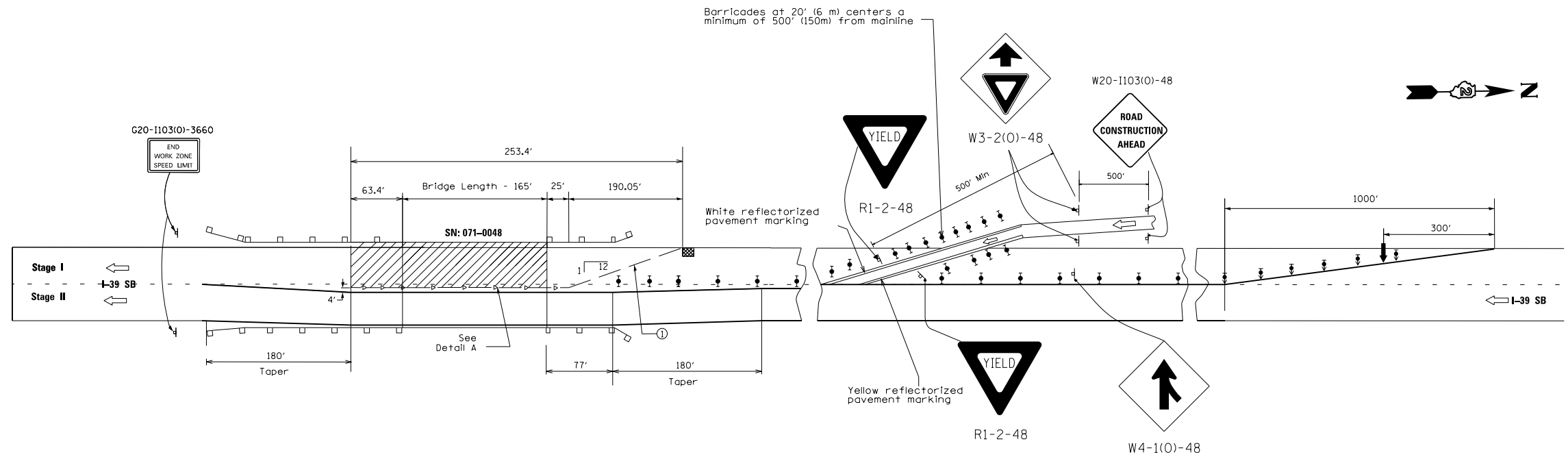
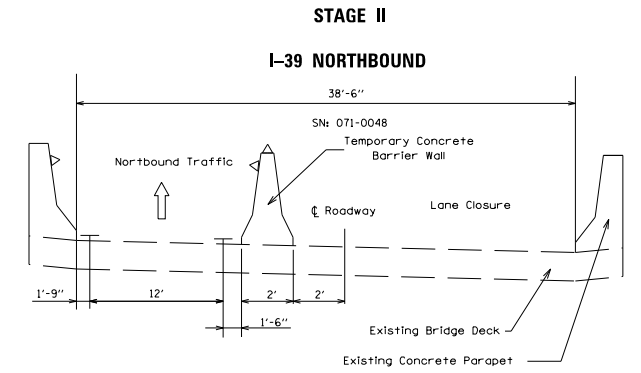
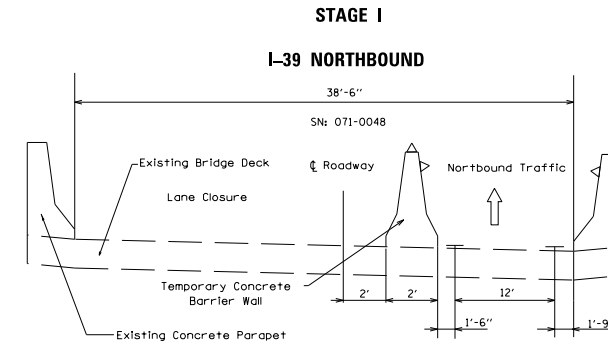
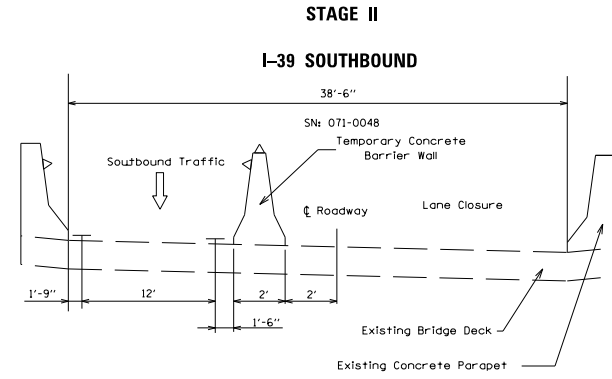
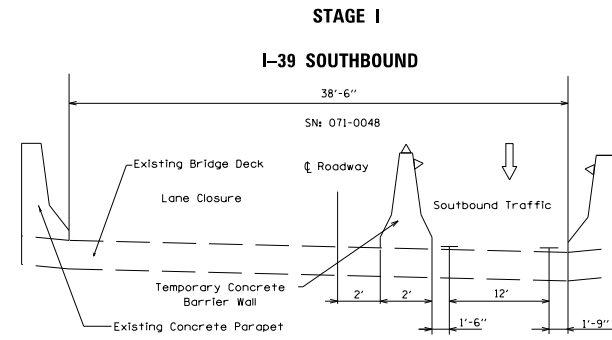
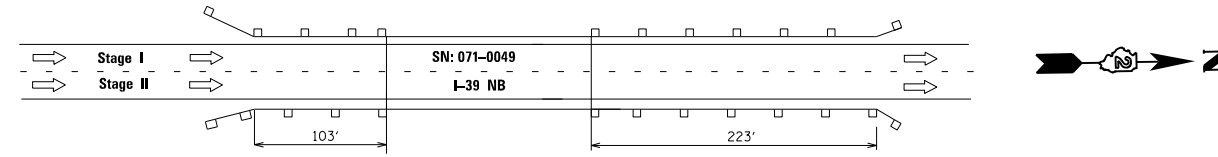


# Traffic Control Plan



- SYMBOLS**
- ↑ Arrow board
  - ▨ Work area
  - ⊥ Sign. See symbols details in Standard 701411-08
  - ⚡ Direction indicator barricade with steady burn monodirectional light
  - ⚡ Type II barricade, drum, or vertical barricade with steady burn monodirectional light
  - Temporary concrete barrier
  - ◁ Type C Monodirectional reflector
  - ▨ Impact attenuator
  - Sand Module Impact attenuator

**NOTES:**

- ① Temporary pavement marking-Line 4" shall be placed throughout the tapers and along of the lanes closures. Line should be white on the right side and yellow on the left side of the moving traffic.
- ② On SN: 071-0048 for stage II construction and for SN: 071-0049 stages I, II construction use traffic control standard 701402
- ③ See Traffic Control Standards 701400 and 701402 for additional signs, devices and other items

DESIGNED -	
CHECKED -	
DRAWN -	
CHECKED -	

DATE -	
REVISED	
REVISED	

**STATE OF ILLINOIS  
DEPARTMENT OF TRANSPORTATION**

F.A.I. RTE.	SECTION	COUNTY	TOTAL SHEETS	SHEET NO.
I-39	D2 Deck Repair 2013-3	OGLE	18	3
CONTRACT NO. 64H95				
ILLINOIS				