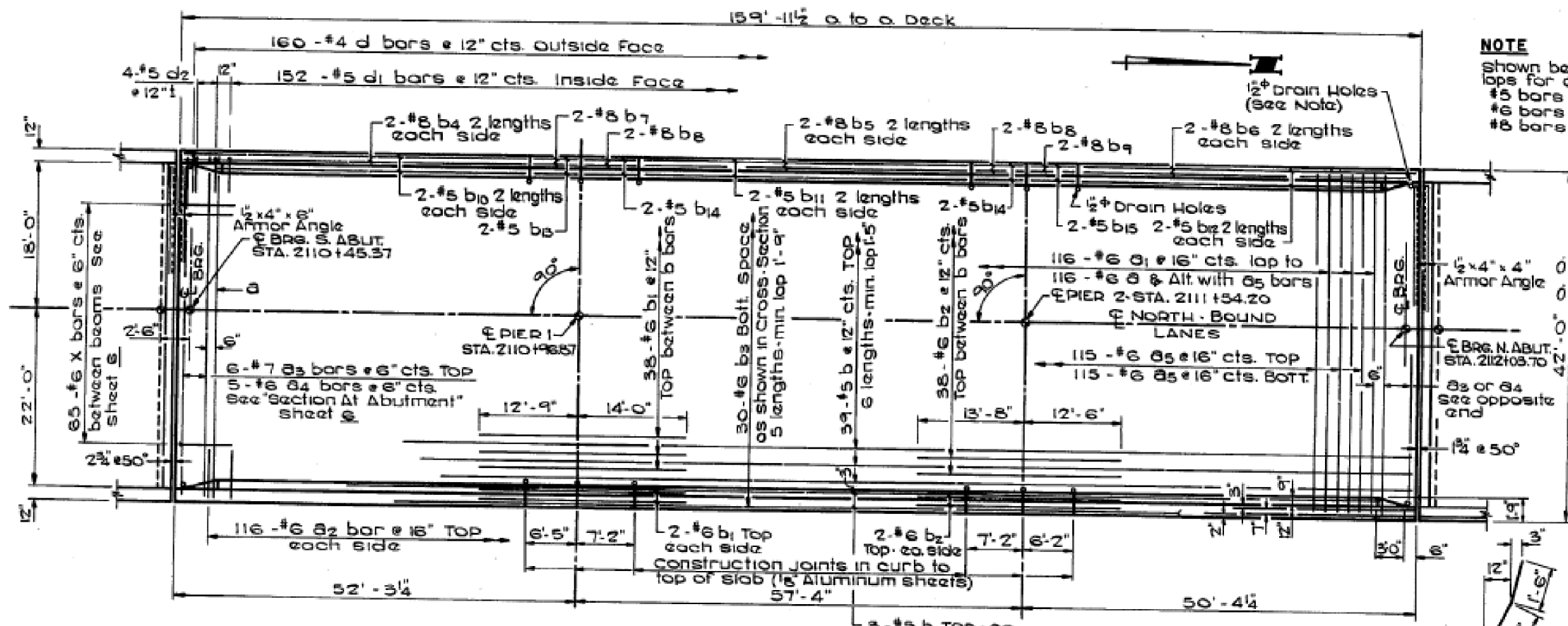


NOTE
 Shown below are the min. laps for curb bars.
 #5 bars 1'-5"
 #6 bars 1'-9"
 #8 bars 4'-2"



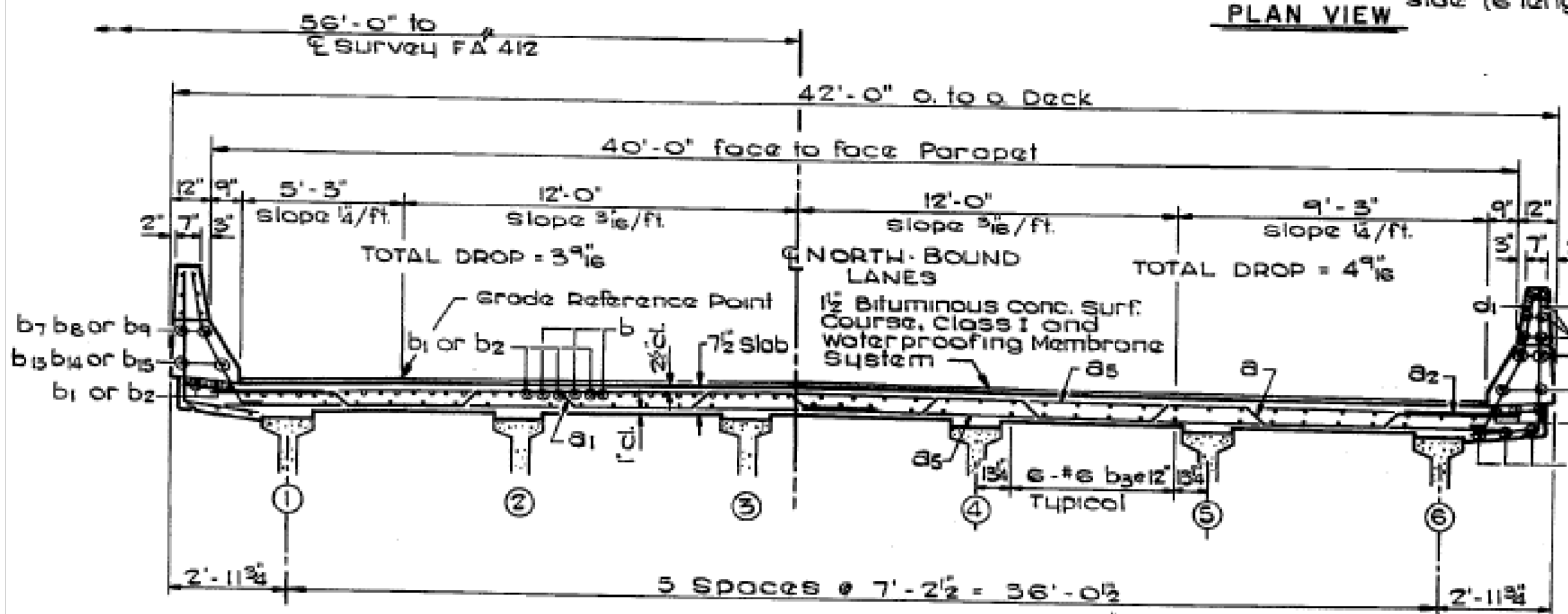
PLAN VIEW

BILL OF MATERIAL

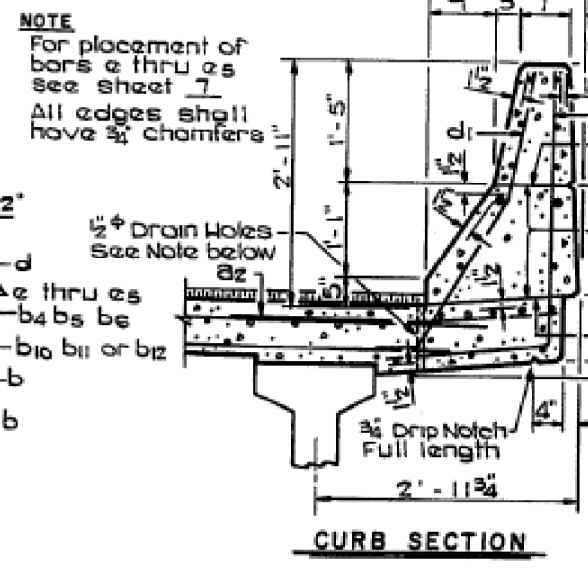
BAR NO.	NO.	SIZE	LENGTH	SHAPE
a	118	#6	22'-1"	—
a1	116	#6	21'-3"	—
a2	232	#6	4'-0"	—
a3	12	#7	40'-0"	—
a4	50	#6	6'-4"	—
a5	230	#6	40'-0"	—
b	308	#5	27'-9"	—
b1	42	#6	28'-9"	—
b2	42	#6	26'-2"	—
b3	150	#6	35'-3"	—
b4	8	#8	24'-10"	—
b5	8	#8	23'-5"	—
b6	8	#8	24'-0"	—
b7	4	#8	6'-2"	—
b8	8	#8	8'-11"	—
b9	4	#8	5'-11"	—
b10	8	#5	23'-6"	—
b11	8	#5	22'-1"	—
b12	8	#5	22'-8"	—
b13	4	#5	6'-2"	—
b14	8	#5	6'-11"	—
b15	4	#5	5'-11"	—
d	320	#4	5'-1"	—
d1	304	#5	4'-0"	—
d2	16	#5	4'-9"	—
m	40	#4	6'-3"	—
m2	20	#6	5'-0"	—
s	50	#4	10'-4"	U
x	130	#6	8'-0"	L

Class X Concrete Cyl. 14g. 212.9
 Reinforcement Bars Lbs. 81060

* Bars shown on sheet 6.



CROSS SECTION LOOKING NORTH



CURB SECTION

NOTE
 For placement of bars e thru s see sheet 7
 All edges shall have 3/8\"/>

NOTE
 1/2\"/>

SUPERSTRUCTURE DETAILS
 (NORTHBOUND STRUCTURE)
 F.A. 412 SECTION 141-3VB
 OVER CHICAGO, MILWAUKEE
 ST. PAUL AND PACIFIC RAILROAD CO.
 OGLE COUNTY
 STATION 2111 + 25.54