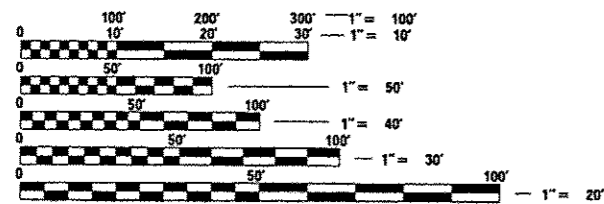


FOR LIST OF HIGHWAY STANDARDS, SEE SHEET NO. 2

**INDEX OF SHEETS**

- 1 COVER SHEET
- 2 LIST OF HIGHWAY STANDARDS AND GENERAL NOTES
- 3 - 11 SUMMARY OF QUANTITIES
- 12 TYPICAL SECTIONS
- 13 TYPICAL SECTIONS AND CROSS-OVER DETAILS
- 14 SCHEDULE OF QUANTITIES, DRAINAGE, EROSION AND SEEDING SCHEDULES
- 15 PAVEMENT SCHEDULES
- 16 PAVEMENT MARKING, EARTHWORK AND MAINTENANCE OF TRAFFIC SCHEDULES
- 17 ALIGNMENT, TIES AND BENCHMARKS
- 18 REMOVAL PLAN
- 19 - 22 PLAN AND PROFILES
- 23 ALTERNATE ROUTE SIGNING
- 24 - 29 SUGGESTED MAINTENANCE OF TRAFFIC
- 30 EROSION CONTROL PLAN
- 31 WETLAND PLAN
- 32 DRAINAGE PLAN
- 33 PAVEMENT MARKING AND SIGNING PLAN
- 34 - 38 TEMPORARY LIGHTING PLAN
- 39 - 76 STRUCTURE PLANS
- 77 - 95 EXISTING STRUCTURE PLANS (FOR INFORMATION ONLY)
- 96 GRADING PLAN
- 97 - 104 DETAILS
- 105 - 122 CROSS SECTIONS (I-57)
- 123 - 138 CROSS SECTIONS (CROSS-OVER)

**PROJECT LOCATED IN THE COUNTY OF IROQUOIS, APPROX. 2.2 MILES SOUTH OF THE VILLAGE OF CHEBANSE**

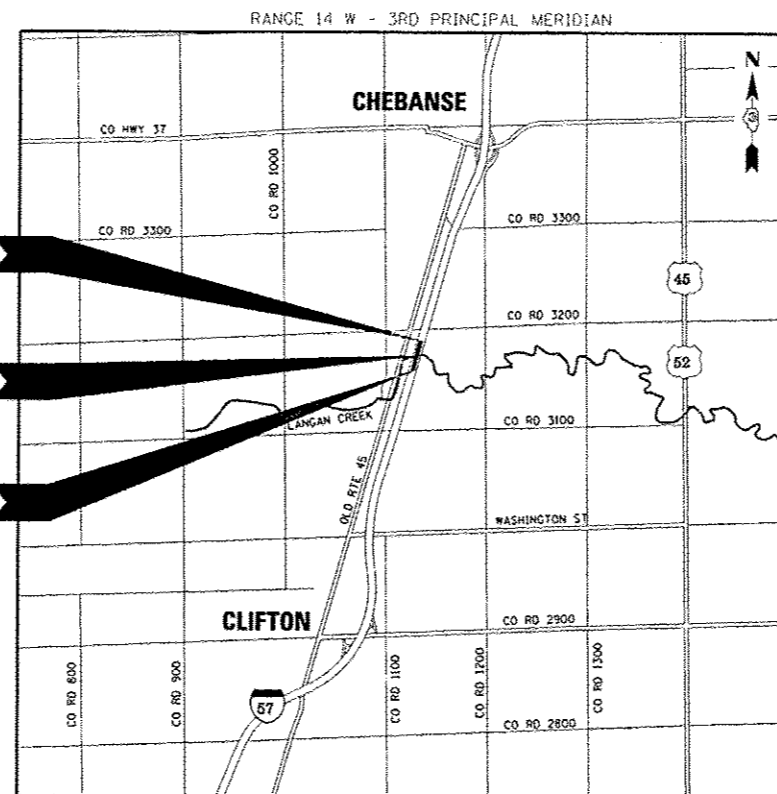


FULL SIZE PLANS HAVE BEEN PREPARED USING STANDARD ENGINEERING SCALES. REDUCED SIZED PLANS WILL NOT CONFORM TO STANDARD SCALES. IN MAKING MEASUREMENTS ON REDUCED PLANS, THE ABOVE SCALES MAY BE USED.

**J.U.L.I.E.**  
JOINT UTILITY LOCATION INFORMATION FOR EXCAVATION  
1-800-892-0123  
OR 811

**DISTRICT 3 NO. (815) 434-6131**  
**PROJECT ENGINEER: CRAIG REED, P.E.**  
**UNIT CHIEF: BRAD DUNCAN, P.E.**  
**TOWNSHIP(S): CHEBANSE**  
**CONTRACT NO. 66944**

**STATE OF ILLINOIS**  
**DEPARTMENT OF TRANSPORTATION**  
**DIVISION OF HIGHWAYS**  
**PROPOSED**  
**HIGHWAY PLANS**  
**F.A.I. 57 (I-57)**  
**SECTION 141 BR(SB) & 38-1BR(NB)**  
**INTERSTATE 57 OVER LANGAN CREEK**  
**BRIDGE REMOVAL AND REPLACEMENT**  
**PROJECT: NHPP-057-6(194)297**  
**IROQUOIS COUNTY**  
**C-93-137-11**



**BEGIN IMPROVEMENTS**  
STA. 827 + 65.00

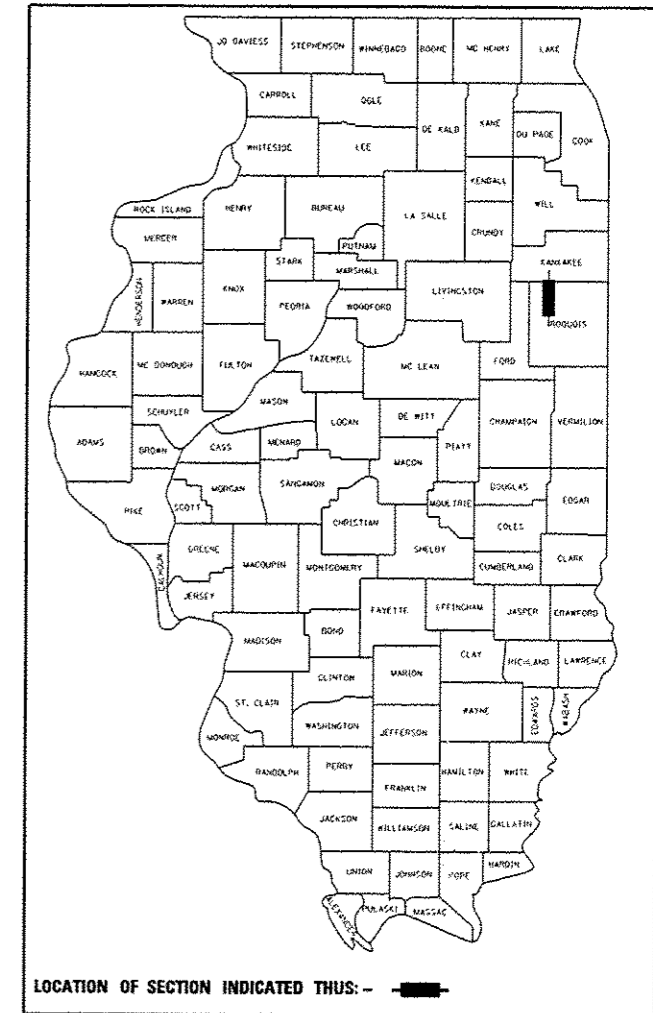
**BRIDGE REPLACEMENT:**  
EX SN: 038-0015 (SB) & 038-0016 (NB)  
PR SN: 038-0215 (SB) & 038-0216 (NB)  
STA. 842 + 57.08 TO 844 + 73.08 (NB)  
STA. 842 + 93.46 TO 845 + 09.46 (SB)

**END IMPROVEMENTS**  
STA. 858 + 15.00

GROSS LENGTH = 3,050 FT. = 0.578 MILES  
NET LENGTH = 2,834 FT. = 0.537 MILES  
BRIDGE OMISSION = 216 FT. = 0.041

F.A.I. RTE.	SECTION	COUNTY	TOTAL SHEETS	SHEET NO.
57	141BR(SB) & 38-1BR(NB)	IROQUOIS	138	1
ILLINOIS CONTRACT NO. 66944				

**P-93-035-00**  
**D-93-087-11**



**STATE OF ILLINOIS**  
MICHAEL J. TRELLO  
081-006334  
SHERMAN, ILLINOIS  
LICENSED STRUCTURAL ENGINEER  
*Michael J. Trello* DATE 12-7-12  
EXPIRES: 11-30-2014  
SHEETS: 65-68

**STATE OF ILLINOIS**  
ROBERT TESSIMONE  
62-41333  
REGISTERED PROFESSIONAL ENGINEER OF ILLINOIS  
*Robert Tessimone* DATE 12/7/12  
EXPIRES: 11-30-2013  
SHEETS: 1-23, 30-33, 96-138

**STATE OF ILLINOIS**  
BRYAN J. MALONE  
081-006002  
PRESTON, ILLINOIS  
LICENSED STRUCTURAL ENGINEER  
*Bryan J. Malone* DATE 12-6-2012  
EXPIRES: 11-30-2014  
SHEETS: 39-64, 69-95

**STATE OF ILLINOIS**  
THOMAS P. PAOLICCI  
062-066747  
REGISTERED PROFESSIONAL ENGINEER OF ILLINOIS  
*Thomas P. Paolucci* DATE 12-3-12  
EXPIRES: 11-30-2013  
SHEETS: 24-29, 34-38

**TRAFFIC DATA**  
**DESIGN DESIGNATION** I-57 = INTERSTATE (RURAL)  
**DESIGN SPEED:** I-57 = 65 MPH

**TRAFFIC VOLUME:**  
I-57 = 20,440 (2013)  
PV = 65.6% SU = 5.5% MU = 28.9%

**STATE OF ILLINOIS**  
**DEPARTMENT OF TRANSPORTATION**  
**DIVISION OF HIGHWAYS**

SUBMITTED *December 14, 2012*  
*Paul A. Keenan*  
DEPUTY DIRECTOR OF HIGHWAYS, REGION ENGINEER

*Feb 1, 2013*  
*John D. Baranzelli, P.E.*  
ENGINEER OF DESIGN AND ENVIRONMENT

*Feb 1, 2013*  
*Omer Osham, P.E.*  
DIRECTOR OF HIGHWAYS, CHIEF ENGINEER

**PRINTED BY THE AUTHORITY**  
**OF THE STATE OF ILLINOIS**