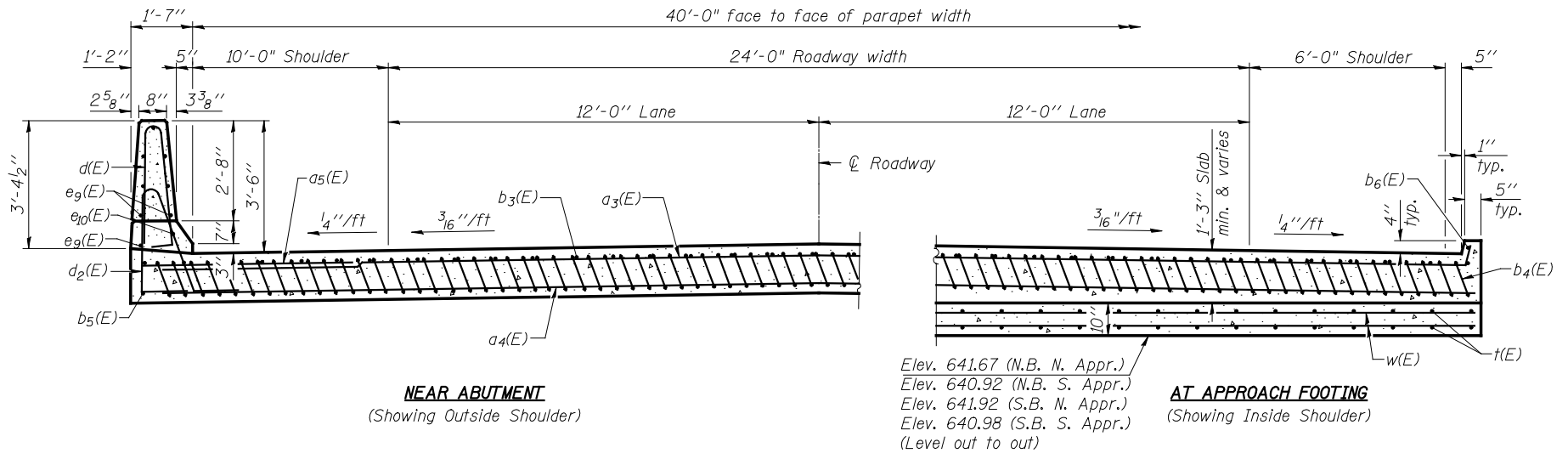
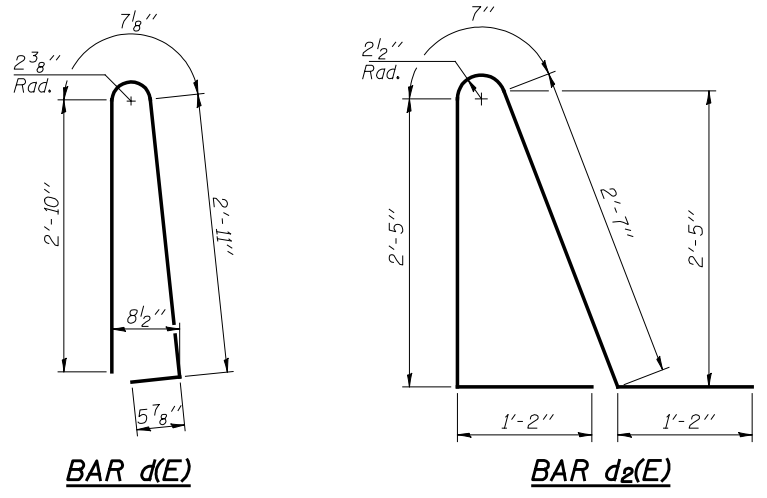


SECTION C-C

Notes:
 See sheet 18 of 38 for Detail A and View B-B.
 Approach slab and parapet concrete shall be paid for as Concrete Superstructure.
 Approach footing concrete shall be paid for as Concrete Structures.
 Reinforcement shall be paid for as Reinforcement Bars, Epoxy Coated.
 For v(E) bar details, see sheet 16 of 38.
 The approach footing maximum applied service bearing pressure (Qmax) = 2.0 ksf.
 For bar splicer details, see sheet 32 of 38.
 Cost of excavation for approach footing included with Concrete Structures.
 For Granular Backfill for Structures and drainage treatment details, see sheet 2 of 38.
 For additional parapet details, see sheet 16 of 38.



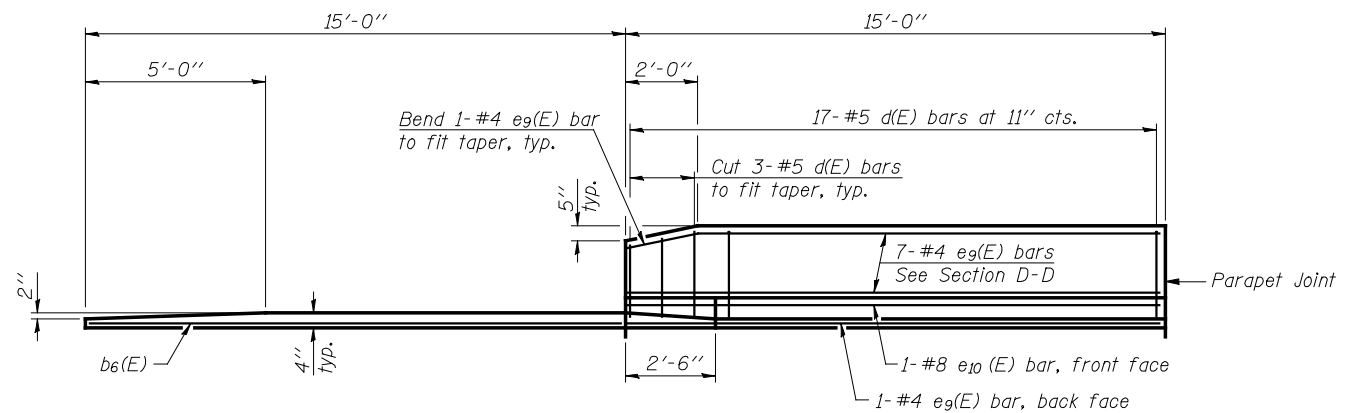
SECTION D-D



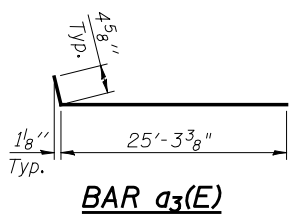
BAR d(E)

BAR d2(E)

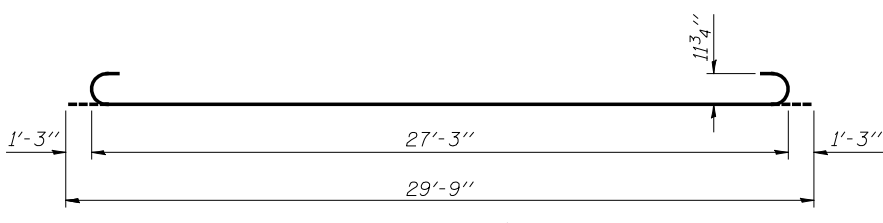
* Tilt #9 b1(E) bars as required to maintain clearance.
 *** Cost included with Concrete Superstructure.



VIEW E-E



BAR a3(E)



BAR b4(E)

**FOUR APPROACHES
 BILL OF MATERIAL**

Bar	No.	Size	Length	Shape
a3(E)	200	#4	25'-8"	┌───┐
a4(E)	368	#5	25'-8"	┌───┐
a5(E)	96	#6	6'-6"	┌───┐
b3(E)	136	#4	29'-8"	┌───┐
b4(E)	400	#9	29'-9"	┌───┐
b5(E)	8	#4	14'-8"	┌───┐
b6(E)	8	#4	14'-8"	┌───┐
d(E)	136	#5	6'-10"	┌───┐
d2(E)	136	#5	7'-11"	┌───┐
e9(E)	64	#4	14'-8"	┌───┐
e10(E)	8	#8	14'-8"	┌───┐
t(E)	344	#4	11'-2"	┌───┐
w(E)	320	#5	25'-8"	┌───┐
Protective Coat		Sq. Yd.	607	
Bridge Deck Grooving		Sq. Yd.	512	
Concrete Superstructure		Cu. Yd.	248.5	
Concrete Structures		Cu. Yd.	59.6	
Reinforcement Bars, Epoxy Coated		Pound	71,690	

Bars indicated thus 1 x 2-#5 etc. indicates 1 line of bars with 2 lengths per line.

1/28/2013 4:46:05 PM 0380215_66944_019_APPR_02.dgn



DESIGNED	TAY	REVISED	
CHECKED	MWS	REVISED	
DRAWN	MWS	REVISED	
CHECKED	BJM	REVISED	

**STATE OF ILLINOIS
 DEPARTMENT OF TRANSPORTATION**

**BRIDGE APPROACH SLAB DETAILS
 STRUCTURE NO. 038-0215 (S.B.) & 038-0216 (N.B.)**

SHEET NO. 19 OF 38 SHEETS

F.A.I. RTE.	SECTION	COUNTY	TOTAL SHEETS	SHEET NO.
57	141 BR(SB) & 38-1 BR(NB)	IROQUOIS	138	57
CONTRACT NO. 66944				
ILLINOIS FED. AID PROJECT				