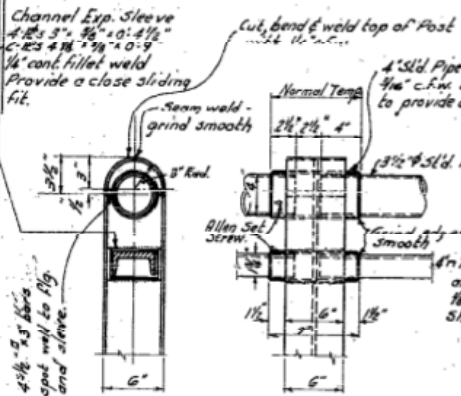
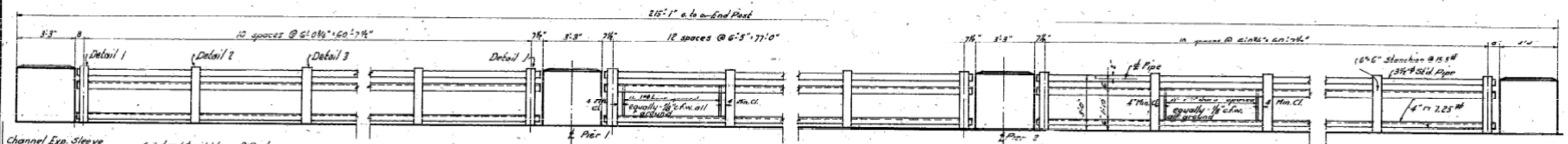
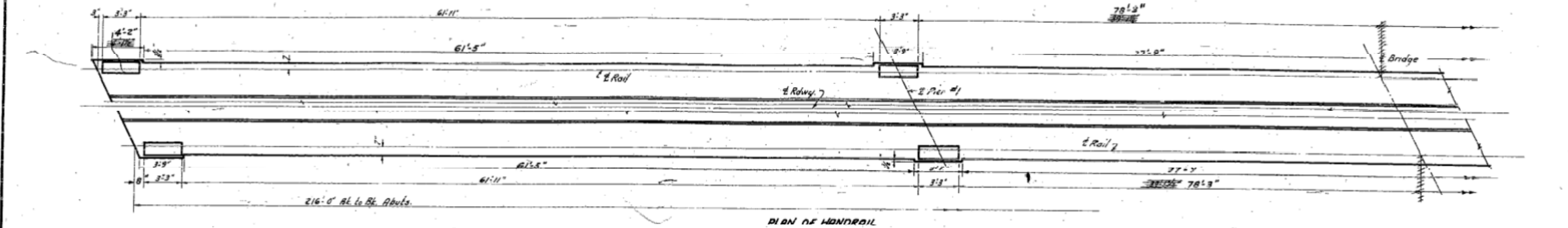
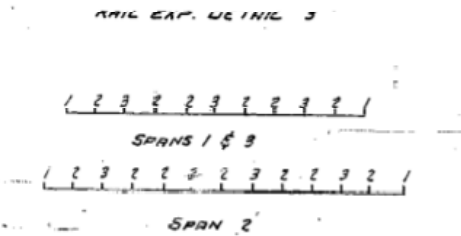


STATE OF ILLINOIS
DEPARTMENT OF PUBLIC WORKS & BUILDINGS
DIVISION OF HIGHWAYS

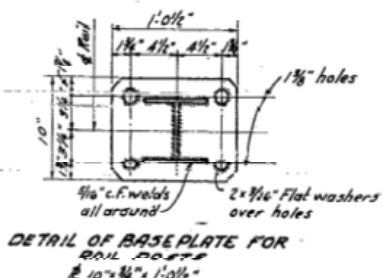
DESIGNED	EXAMINED	COUNTY	TOTAL SHEETS	SHEET NO.
1418	Iroquois	13	5	8 SHEETS



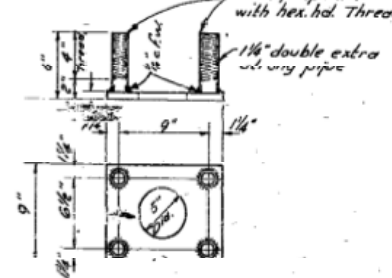
RAIL EXP. DETAIL 1



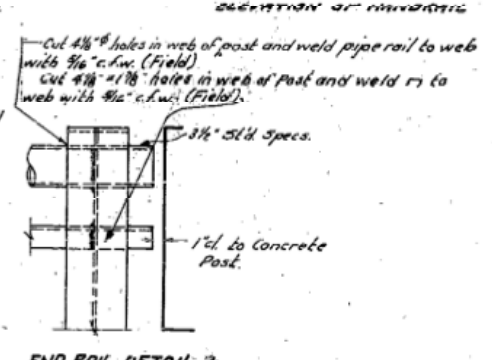
INT. RAILS DETAIL 2



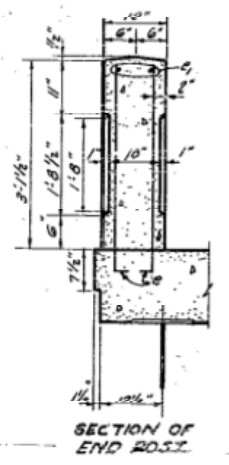
DETAIL OF BASE PLATE FOR RAIL POST



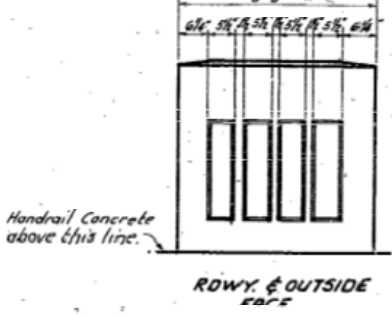
ANCHOR DETAILS



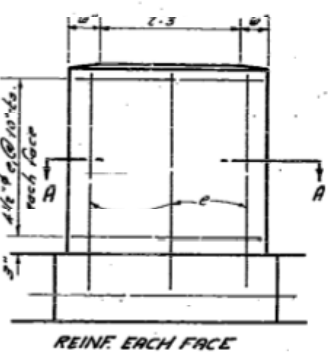
END RAIL DETAIL 3



SECTION OF END POST



ROWLY & OUTSIDE FACE



REINF. EACH FACE

DESIGNED	10-23-1950
CHECKED	
DRAWN	
CHECKED	

Handrail Revised 6-22-51 H.R.G.

BILL OF MATERIAL - HANDRAIL

Bar No.	Size	Length	Shape
1	1/2"	21.0'	1
2	1/2"	21.0'	1
3	1/2"	21.0'	1
4	1/2"	21.0'	1
5	1/2"	21.0'	1
6	1/2"	21.0'	1
7	1/2"	21.0'	1
8	1/2"	21.0'	1
9	1/2"	21.0'	1
10	1/2"	21.0'	1
11	1/2"	21.0'	1
12	1/2"	21.0'	1
13	1/2"	21.0'	1
14	1/2"	21.0'	1
15	1/2"	21.0'	1
16	1/2"	21.0'	1
17	1/2"	21.0'	1
18	1/2"	21.0'	1
19	1/2"	21.0'	1
20	1/2"	21.0'	1
21	1/2"	21.0'	1
22	1/2"	21.0'	1
23	1/2"	21.0'	1
24	1/2"	21.0'	1
25	1/2"	21.0'	1
26	1/2"	21.0'	1
27	1/2"	21.0'	1
28	1/2"	21.0'	1
29	1/2"	21.0'	1
30	1/2"	21.0'	1
31	1/2"	21.0'	1
32	1/2"	21.0'	1
33	1/2"	21.0'	1
34	1/2"	21.0'	1
35	1/2"	21.0'	1
36	1/2"	21.0'	1
37	1/2"	21.0'	1
38	1/2"	21.0'	1
39	1/2"	21.0'	1
40	1/2"	21.0'	1
41	1/2"	21.0'	1
42	1/2"	21.0'	1
43	1/2"	21.0'	1
44	1/2"	21.0'	1
45	1/2"	21.0'	1
46	1/2"	21.0'	1
47	1/2"	21.0'	1
48	1/2"	21.0'	1
49	1/2"	21.0'	1
50	1/2"	21.0'	1
51	1/2"	21.0'	1
52	1/2"	21.0'	1
53	1/2"	21.0'	1
54	1/2"	21.0'	1
55	1/2"	21.0'	1
56	1/2"	21.0'	1
57	1/2"	21.0'	1
58	1/2"	21.0'	1
59	1/2"	21.0'	1
60	1/2"	21.0'	1
61	1/2"	21.0'	1
62	1/2"	21.0'	1
63	1/2"	21.0'	1
64	1/2"	21.0'	1
65	1/2"	21.0'	1
66	1/2"	21.0'	1
67	1/2"	21.0'	1
68	1/2"	21.0'	1
69	1/2"	21.0'	1
70	1/2"	21.0'	1
71	1/2"	21.0'	1
72	1/2"	21.0'	1
73	1/2"	21.0'	1
74	1/2"	21.0'	1
75	1/2"	21.0'	1
76	1/2"	21.0'	1
77	1/2"	21.0'	1
78	1/2"	21.0'	1
79	1/2"	21.0'	1
80	1/2"	21.0'	1
81	1/2"	21.0'	1
82	1/2"	21.0'	1
83	1/2"	21.0'	1
84	1/2"	21.0'	1
85	1/2"	21.0'	1
86	1/2"	21.0'	1
87	1/2"	21.0'	1
88	1/2"	21.0'	1
89	1/2"	21.0'	1
90	1/2"	21.0'	1
91	1/2"	21.0'	1
92	1/2"	21.0'	1
93	1/2"	21.0'	1
94	1/2"	21.0'	1
95	1/2"	21.0'	1
96	1/2"	21.0'	1
97	1/2"	21.0'	1
98	1/2"	21.0'	1
99	1/2"	21.0'	1
100	1/2"	21.0'	1

RAIL DETAILS
LANGAN CREEK BRIDGE
PROJ. P.L. 29(11)
F.A.R.T.E. 26 (S.B.) SEC. 141-B
IROQUOIS COUNTY
STA. 643+70(1)

FOR INFORMATION ONLY



DESIGNED	REVISOR
CHECKED	REVISOR
DRAWN	REVISOR
CHECKED	REVISOR

STATE OF ILLINOIS
DEPARTMENT OF TRANSPORTATION

EXISTING STRUCTURE PLANS
STRUCTURE NO. 038-0215 (S.B.)

SHEET NO. 12 OF 19 SHEETS

F.A.I. RTE.	SECTION	COUNTY	TOTAL SHEETS	SHEET NO.
57	141 BR(S) & 38-1 BR(NB)	IROQUOIS	138	88
CONTRACT NO. 66944				

ILLINOIS FED. AID PROJECT

12/7/2012 4:52:54 AM 0380215.66944.001.EX12.dgn