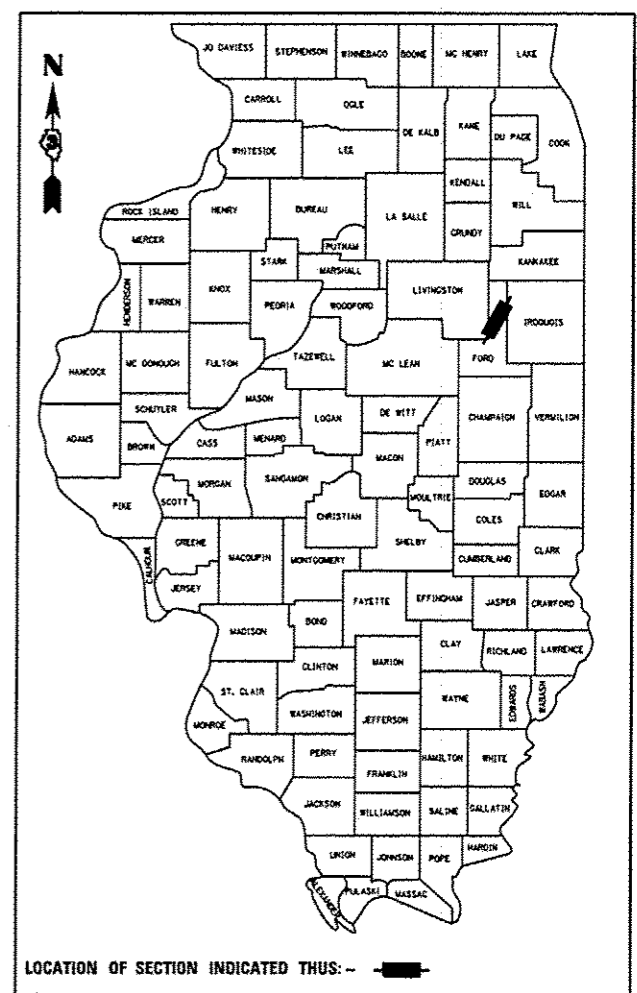


| F.A.P. RTE. | SECTION | COUNTY | TOTAL SHEETS | SHEET NO. |
|-------------|----------|--------|--------------|-----------|
| 71 | (113-RB) | FORD | 9 | 1 |

ILLINOIS CONTRACT NO. 66C52
*941=10

D-93-011-13



LOCATION OF SECTION INDICATED THIS: -

| RURAL | |
|----------------|--------|
| MINOR ARTERIAL | |
| FAP 71 (IL 54) | |
| 2011 | |
| ADT | 700 |
| P.V. | 82.86% |
| S.U. | 7.14% |
| M.U. | 10.00% |

STATE OF ILLINOIS
DEPARTMENT OF TRANSPORTATION
DIVISION OF HIGHWAYS

SUBMITTED Dec 13 2013
Paul [Signature]
DEPUTY DIRECTOR OF HIGHWAYS, REGION ENGINEER

Feb 1 2013
John D. Baranzoli P.E./bc
ENGINEER OF DESIGN AND ENVIRONMENT

Feb 1 2013
Omer Osman P.E./br
DIRECTOR OF HIGHWAYS, CHIEF ENGINEER

PRINTED BY THE AUTHORITY
OF THE STATE OF ILLINOIS

STATE OF ILLINOIS
DEPARTMENT OF TRANSPORTATION

DIVISION OF HIGHWAYS

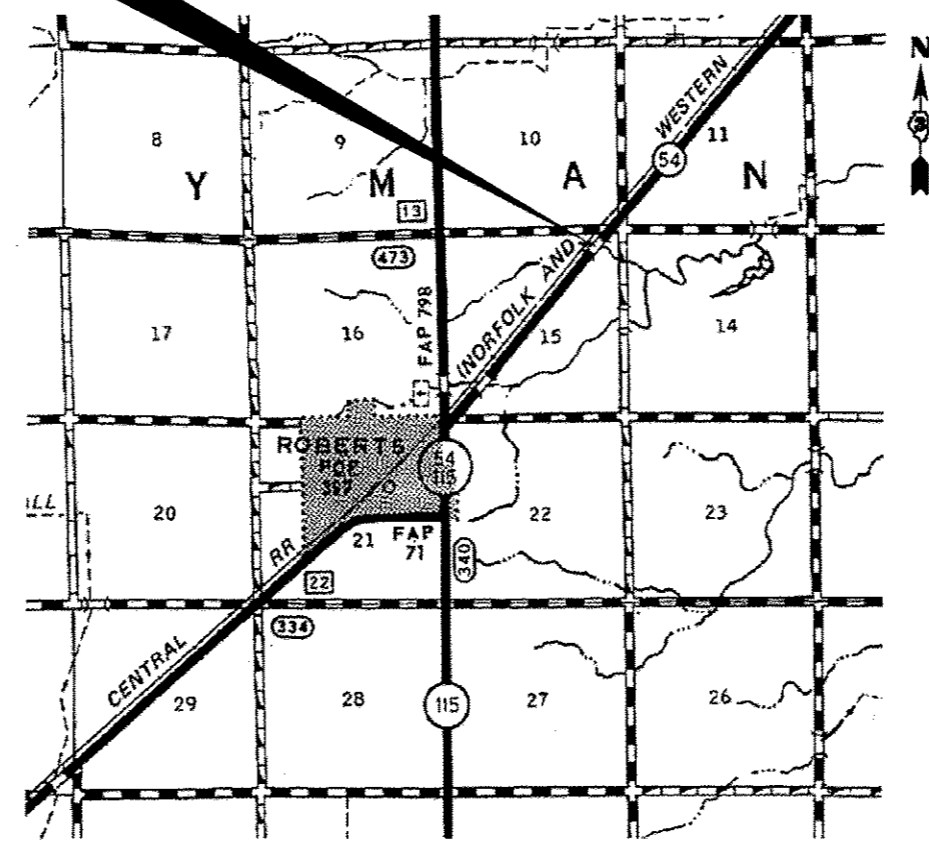
**PROPOSED
HIGHWAY PLANS**

F.A.P. ROUTE 71 (IL 54)
SECTION (113-RB)

**NORTHWEST WINGWALL REPAIR
RC GIRDER STRUCTURE
STRUCTURE NO. 027-0017
1.3 MILES NORTHEAST OF IL 115
FORD COUNTY**

C-93-009-13

PROJECT LOCATION
STA. 98 + 94.00



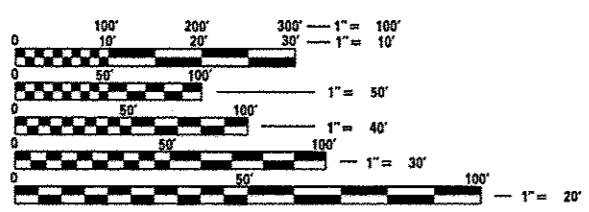
GROSS LENGTH = 36 FT. = 0.007 MILE
NET LENGTH = 36 FT. = 0.007 MILE

INDEX OF SHEETS

1. COVER SHEET
2. GENERAL NOTES
3. SUMMARY OF QUANTITIES
4. TYPICAL SECTION
5. TRAFFIC CONTROL DETAILS
- 6-9. STRUCTURE PLANS

* 6-9
* 7A. Added
STANDARDS

- 000001-06 STANDARD SYMBOLS, ABBREVIATIONS AND PATTERNS
- 001001-02 AREAS OF REINFORCEMENT BARS
- 001008- DECIMAL OF AN INCH AND OF A FOOT
- 280001-07 TEMPORARY EROSION CONTROL SYSTEMS
- 482008-03 HMA SHOULDER ADJACENT TO RIGID PAVEMENT
- 601001-04 SUB-SURFACE DRAINS
- 601101-01 CONCRETE HEADWALL FOR PIPE DRAINS
- 630001-10 STEEL PLATE BEAM GUARDRAIL
- 701001-02 OFF-ROAD OPERATIONS 2L, 2W, MORE THAN 15' (4.5 m) AWAY
- 701008-04 OFF-ROAD OPERATIONS 2L, 2W, 15' (4.5 m) TO 24" (600 mm) FROM PAVEMENT EDGE
- 701011-03 OFF-ROAD MOVING OPERATIONS 2L, 2W, DAY ONLY
- 701101-03 OFF-ROAD OPERATIONS MULTILANE, 15' (4.5 m) TO 24" (600 mm) FROM PAVEMENT EDGE
- 701106-02 OFF-ROAD OPERATIONS, MULTILANE, MORE THAN 15' (4.5 m) AWAY
- 701201-04 LANE CLOSURE, 2L, 2W, DAY ONLY, FOR SPEEDS ≥ 45 MPH
- 701206-03 LANE CLOSURE, 2L, 2W, NIGHT ONLY, FOR SPEEDS ≥ 45 MPH
- 701321-13 LANE CLOSURE, 2L, 2W, BRIDGE REPAIR WITH BARRIER
- 701901-02 TRAFFIC CONTROL DEVICES
- 704001-07 TEMPORARY CONCRETE BARRIER



FULL SIZE PLANS HAVE BEEN PREPARED USING STANDARD ENGINEERING SCALES. REDUCED SIZED PLANS WILL NOT CONFORM TO STANDARD SCALES. IN MAKING MEASUREMENTS ON REDUCED PLANS, THE ABOVE SCALES MAY BE USED.

J.U.L.I.E.
JOINT UTILITY LOCATION INFORMATION FOR EXCAVATION
1-800-892-0123
OR 811

DISTRICT 3 NO. 815-434-6131

PROJECT ENGINEER: JOE KANNEL P.E.
UNIT CHIEF: RON WOODSHANK
TOWNSHIP: LYMAN

CONTRACT NO. 66C52

Rev.

