

F.A.I. RTE.	SECTION	COUNTY	TOTAL SHEETS	SHEET NO.
55	(53-5VB-1)I-2	LIVINGSTON	7	1
ILLINOIS CONTRACT NO. 66C64				

**INDEX OF SHEETS**

1. COVER SHEET
2. GENERAL NOTES
3. SUMMARY OF QUANTITIES
4. TYPICAL SECTIONS
- 5-7. STRUCTURE PLANS

**STANDARDS**

000001-06	STANDARD SYMBOLS, ABBREVIATIONS AND PATTERNS
001001-02	AREAS OF REINFORCEMENT BARS
001006	DECIMAL OF AN INCH AND OF A FOOT
701901-02	TRAFFIC CONTROL DEVICES

**STATE OF ILLINOIS  
DEPARTMENT OF TRANSPORTATION**

**DIVISION OF HIGHWAYS**

**PROPOSED  
HIGHWAY PLANS**

**FAI ROUTE 55 (I-55)  
SECTION (53-5VB-1)I-2  
LIVINGSTON COUNTY**

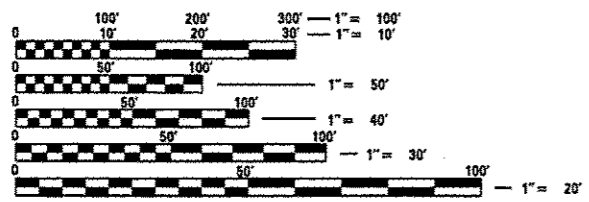
**CONCRETE REPAIRS TO EXISTING PIERS  
STRUCTURE NO. 053-0126 SB  
STRUCTURE NO. 053-0127 NB  
CARRYING FAI 55 (I-55) OVER AN ABANDONED RAILROAD  
0.5 MILES NORTH OF IL 116 (PONTIAC)**

C-93-023-13



RURAL	
INTERSTATE	
FAI 55 (I-55)	
2011	
ADT	18700
P.V.	71.79%
S.U.	4.41%
M.U.	23.80%

**PROJECT LOCATION**  
SN 053-0126 SB  
SN 053-0127 NB  
STA. 136+65



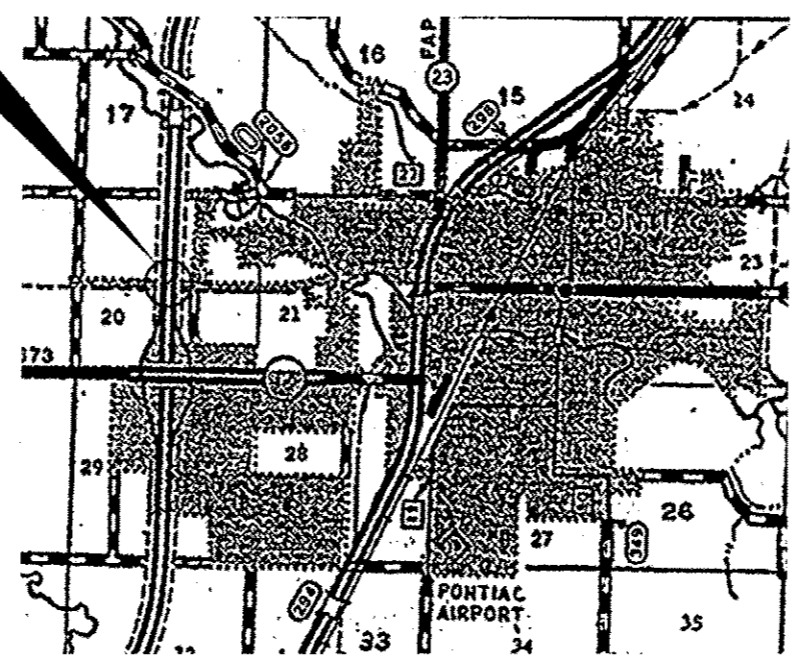
FULL SIZE PLANS HAVE BEEN PREPARED USING STANDARD ENGINEERING SCALES. REDUCED SIZED PLANS WILL NOT CONFORM TO STANDARD SCALES. IN MAKING MEASUREMENTS ON REDUCED PLANS, THE ABOVE SCALES MAY BE USED.

J.U.L.I.E.  
JOINT UTILITY LOCATION INFORMATION FOR EXCAVATION  
1-800-892-0123  
OR 811

DISTRICT 3 NO. 1-815-434-6131

PROJECT ENGINEER: JOE KANNEL P.E.  
UNIT CHIEF: RON WOODSHANK  
TOWNSHIP: PONTIAC

CONTRACT NO. 66C64



GROSS LENGTH = 148 FT. = 0.028 MILE  
NET LENGTH = 148 FT. = 0.028 MILE

STATE OF ILLINOIS  
DEPARTMENT OF TRANSPORTATION  
DIVISION OF HIGHWAYS

SUBMITTED Dec 13 2012  
*Paul [Signature]*  
DEPUTY DIRECTOR OF HIGHWAYS, REGION ENGINEER

Feb 1 2013  
*John D. Baranzelli PE*  
ENGINEER OF DESIGN AND ENVIRONMENT

Feb 1 2013  
*Chris [Signature] PE*  
DIRECTOR OF HIGHWAYS, CHIEF ENGINEER

**PRINTED BY THE AUTHORITY  
OF THE STATE OF ILLINOIS**