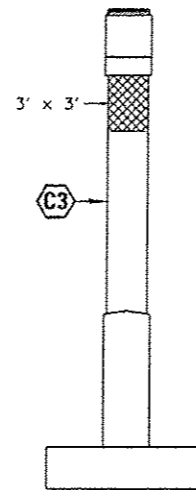
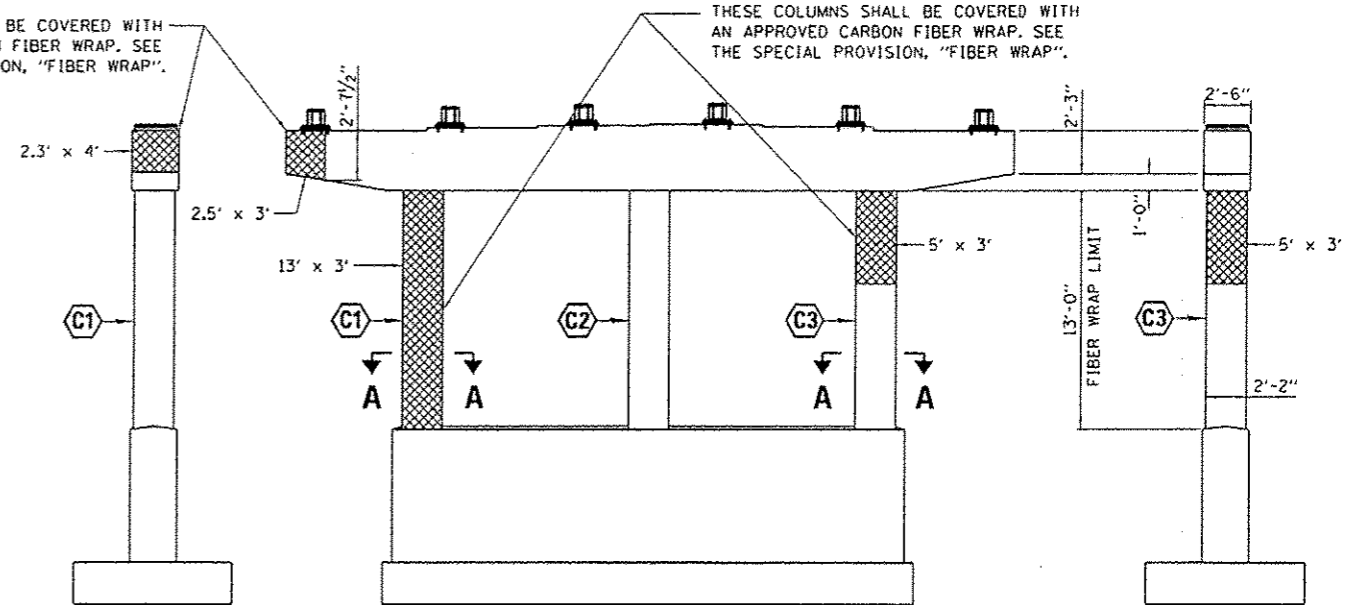


ELEVATION
WEST END

PIER 1 ELEVATION
(SOUTH PIER)
LOOKING NORTH



ELEVATION
EAST END



ELEVATION
WEST END

PIER 2 ELEVATION
(NORTH PIER)
LOOKING NORTH

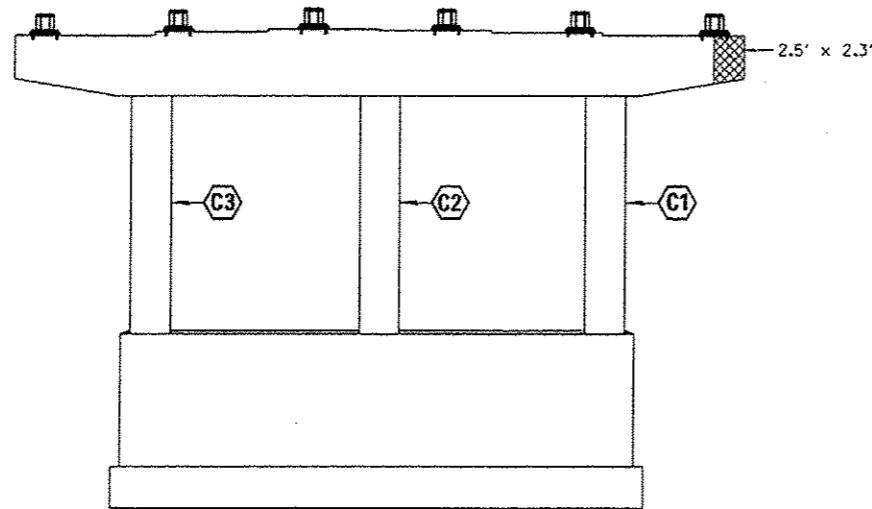
ELEVATION
EAST END

PIER CAP END SHALL BE COVERED WITH AN APPROVED CARBON FIBER WRAP. SEE THE SPECIAL PROVISION, "FIBER WRAP".

THESE COLUMNS SHALL BE COVERED WITH AN APPROVED CARBON FIBER WRAP. SEE THE SPECIAL PROVISION, "FIBER WRAP".

BEAM REACTION	
Q (k)	76
L (k)	44
Imp. (k)	13
Total (k)	133

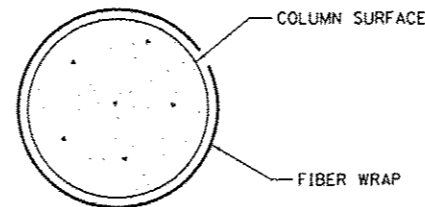
NOTE:
TEMPORARY SHORING FOR COLUMNS C1 & C2 IS TO BE INSTALLED PRIOR TO START OF WORK AT THESE LOCATIONS.



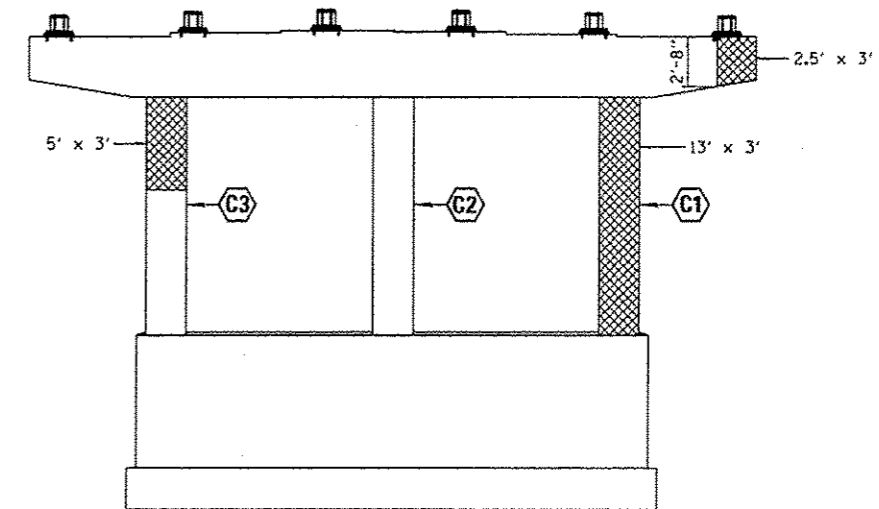
PIER 1 ELEVATION
(SOUTH PIER)
LOOKING SOUTH

COLUMN NO. = C1
MEASUREMENTS: V x H

STRUCTURAL REPAIR OF CONCRETE
DEPTH EQUAL TO OR LESS THAN 5"



SECTION A-A



PIER 2 ELEVATION
(NORTH PIER)
LOOKING SOUTH

BILL OF MATERIAL

ITEM	UNIT	TOTAL
STRUCTURAL REPAIR OF CONCRETE (DEPTH EQUAL TO OR LESS THAN 5")	SO FT	182
TEMPORARY SHORING AND CRIBBING	EACH	2
FIBER WRAP	SO FT	128
ACRYLIC COATING	SO YD	28

FILE NAME : c:\p\work\pvidot\woodshankr1\d8314722\066C64-sh1-detail.dgn	USER NAME : woodshankr1	DESIGNED -	REVISED -
MODEL NAME :	PLOT SCALE : 100.0000' / 1"	DRAWN -	REVISED -
	PLOT DATE : 1/11/2013	CHECKED -	REVISED -
		DATE -	REVISED -

STATE OF ILLINOIS
DEPARTMENT OF TRANSPORTATION

PIER DETAILS FOR
STRUCTURE NO. 053-0126

SCALE: SHEET 2 OF 3 SHEETS STA. TO STA.

F.A.I. R.T.E. 55	SECTION (53-5VB-111-2)	COUNTY LIVINGSTON	TOTAL SHEETS 7	SHEET NO. 6
CONTRACT NO. 66C64			ILLINOIS FED. AID PROJECT	