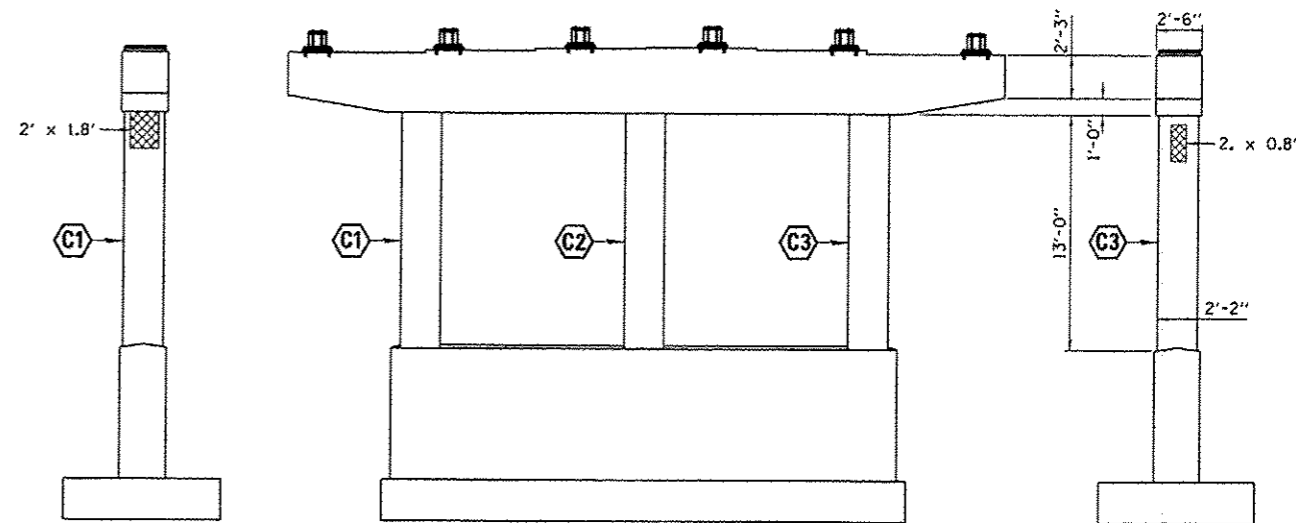


ELEVATION
WEST END

PIER 1 ELEVATION
(SOUTH PIER)
LOOKING NORTH

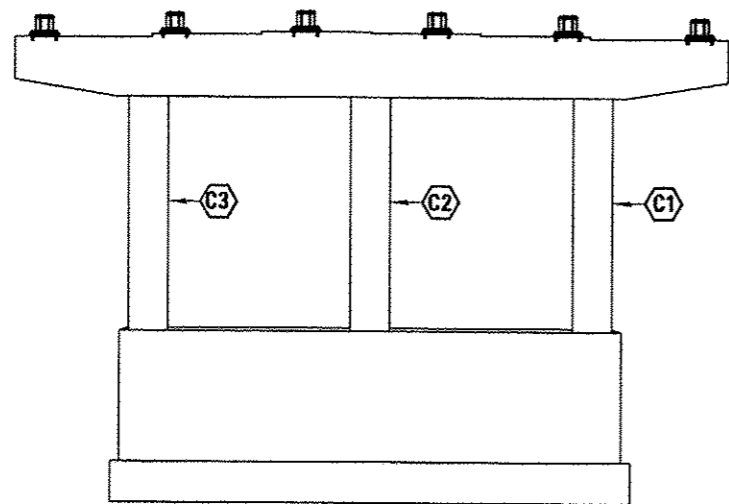
ELEVATION
EAST END



ELEVATION
WEST END


PIER 2 ELEVATION
(NORTH PIER)
LOOKING NORTH

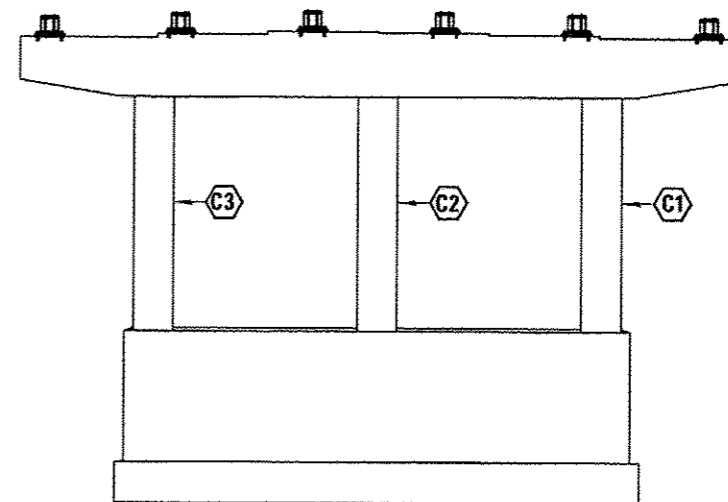
ELEVATION
EAST END



PIER 1 ELEVATION
(SOUTH PIER)
LOOKING SOUTH

COLUMN NO. = **C3**
MEASUREMENTS: V x H

 STRUCTURAL REPAIR OF CONCRETE
DEPTH EQUAL TO OR LESS THAN 5"



PIER 2 ELEVATION
(NORTH PIER)
LOOKING SOUTH

TOTAL BILL OF MATERIAL

ITEM	UNIT	TOTAL
STRUCTURAL REPAIR OF CONCRETE (DEPTH EQUAL TO OR LESS THAN 5")	SQ FT	14

FILE NAME =	USER NAME = woodshankr	DESIGNED -	REVISED -
c:\p\work\psidot\woodshankr\148314722\	366C64.sht-details.dgn	DRAWN -	REVISED -
#MODELNAME#	PLOT SCALE = 1/88,8888 1/16"	CHECKED -	REVISED -
	PLOT DATE = 12/4/2012	DATE -	REVISED -

STATE OF ILLINOIS
DEPARTMENT OF TRANSPORTATION

PIER DETAILS FOR
STRUCTURE NO. 053-0127

F.A.I. RTE.	SECTION	COUNTY	TOTAL SHEETS	SHEET NO.
55	(53-5VB-1)I-2	LIVINGSTON	7	7
			CONTRACT NO. 66C64	
ILLINOIS FED. AID PROJECT				

SCALE: SHEET 3 OF 3 SHEETS STA. TO STA.