

03-08-13 LETTING ITEM 018 STATE OF ILLINOIS

F.A.I. RTE.	SECTION	COUNTY	TOTAL SHEETS	SHEET NO.
55	(53-5VB-1)I-2	LIVINGSTON	7	1
ILLINOIS CONTRACT NO. 66C64				

INDEX OF SHEETS

1. COVER SHEET
2. GENERAL NOTES
3. SUMMARY OF QUANTITIES
4. TYPICAL SECTIONS
- 5-7. STRUCTURE PLANS

STANDARDS

- | | |
|-----------|--|
| 000001-06 | STANDARD SYMBOLS, ABBREVIATIONS AND PATTERNS |
| 001001-02 | AREAS OF REINFORCEMENT BARS |
| 001006 | DECIMAL OF AN INCH AND OF A FOOT |
| 701901-02 | TRAFFIC CONTROL DEVICES |

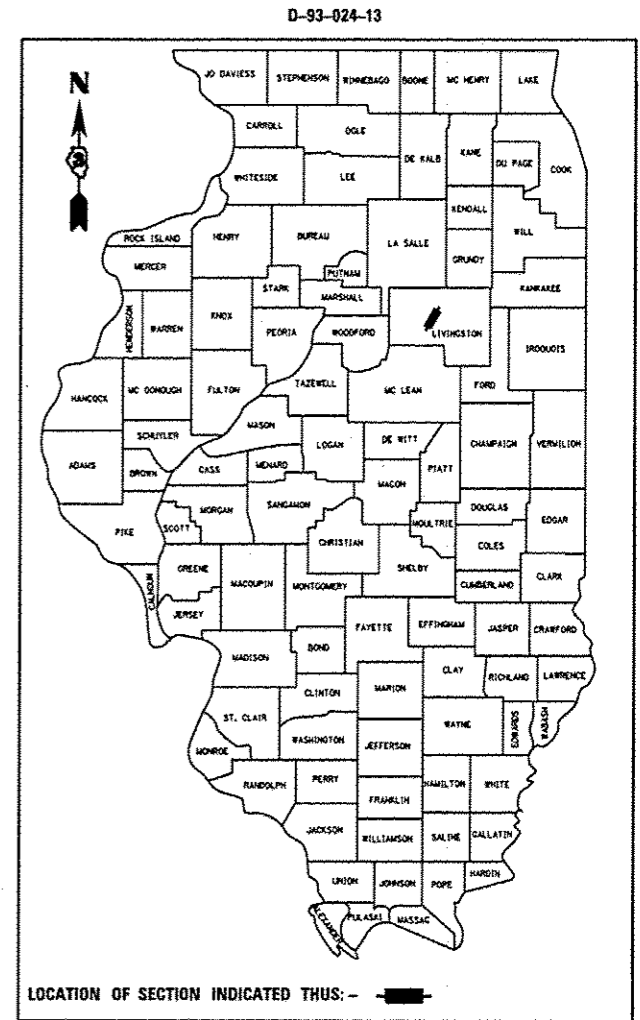
**DEPARTMENT OF TRANSPORTATION
DIVISION OF HIGHWAYS**

**PROPOSED
HIGHWAY PLANS**

**FAI ROUTE 55 (I-55)
SECTION (53-5VB-1)I-2
LIVINGSTON COUNTY**

**CONCRETE REPAIRS TO EXISTING PIERS
STRUCTURE NO. 053-0126 SB
STRUCTURE NO. 053-0127 NB
CARRYING FAI 55 (I-55) OVER AN ABANDONED RAILROAD
0.5 MILES NORTH OF IL 116 (PONTIAC)**

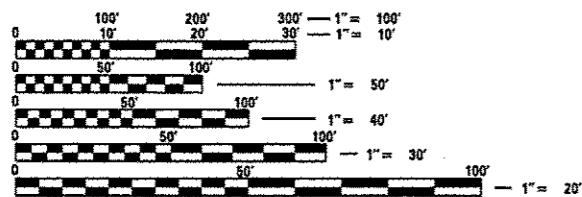
C-93-023-13



RURAL	
INTERSTATE	
FAI 55 (I-55)	
2011	
ADT	18700
P.V.	71.79%
S.U.	4.41%
M.U.	23.80%

PROJECT LOCATION

SN 053-0126 SB
SN 053-0127 NB
STA. 136+65



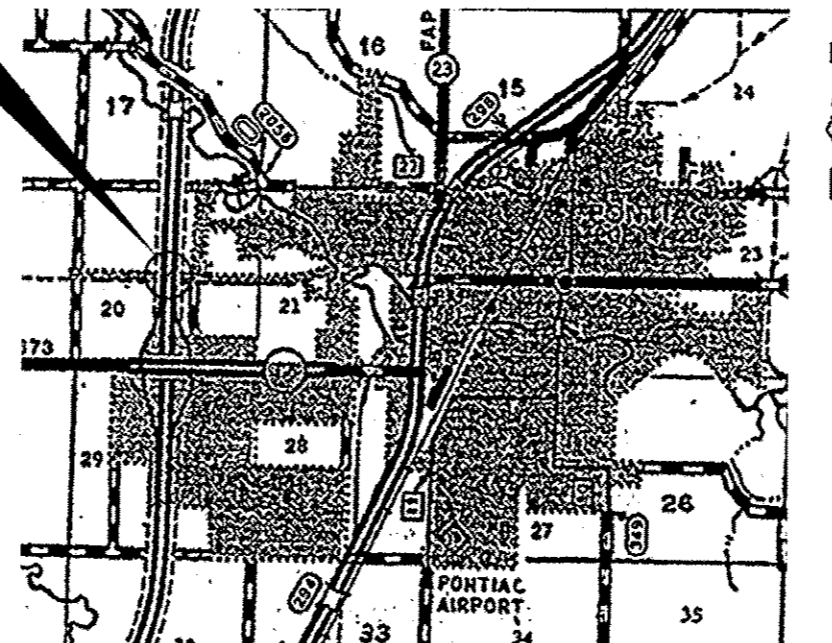
FULL SIZE PLANS HAVE BEEN PREPARED USING STANDARD ENGINEERING SCALES. REDUCED SIZED PLANS WILL NOT CONFORM TO STANDARD SCALES. IN MAKING MEASUREMENTS ON REDUCED PLANS, THE ABOVE SCALES MAY BE USED.

J.U.L.I.E.
JOINT UTILITY LOCATION INFORMATION FOR EXCAVATION
1-800-892-0123
OR 811

DISTRICT 3 NO. 1-815-434-6131

PROJECT ENGINEER: JOE KANNEL P.E.
UNIT CHIEF: RON WOODSHANK
TOWNSHIP: PONTIAC

CONTRACT NO. 66C64



GROSS LENGTH = 148 FT. = 0.028 MILE
NET LENGTH = 148 FT. = 0.028 MILE

STATE OF ILLINOIS
DEPARTMENT OF TRANSPORTATION
DIVISION OF HIGHWAYS

SUBMITTED: Dec 13 2012
Paul [Signature]
DEPUTY DIRECTOR OF HIGHWAYS, REGION ENGINEER

Feb 1 2013
John D. Baranzelli, P.E.
ENGINEER OF DESIGN AND ENVIRONMENT

Feb 1 2013
Omer Osman, P.E.
DIRECTOR OF HIGHWAYS, CHIEF ENGINEER

**PRINTED BY THE AUTHORITY
OF THE STATE OF ILLINOIS**

GENERAL NOTES

ANY REFERENCE TO A STANDARD IN THESE PLANS SHALL BE INTERPRETED TO MEAN THE EDITION AS INDICATED BY THE SUBNUMBER SHOWN IN THE LIST OF STANDARDS OR THE COPY INCLUDED IN THESE PLANS.

THE CONTRACTOR SHALL CONTACT JULIE AT LEAST 48 HOURS PRIOR TO EXCAVATION TO DETERMINE WHICH UTILITIES ARE IN THE AREA.

COMMITMENTS

DISPOSAL OF EXCAVATED MATERIALS. ALL SUITABLE OR UNSUITABLE MATERIALS EXCAVATED DUE TO CONSTRUCTION OPERATIONS SHALL BE DISPOSED OF WITHIN THE LIMITS OF EXISTING RIGHT OF WAY. DISPOSAL OF EXCAVATED MATERIALS OFF THE RIGHT OF WAY SHALL NOT BE PERMITTED.

EXCAVATED MATERIALS SHALL BE DISPOSED OF AT LOCATIONS DIRECTED BY THE ENGINEER. ANY SUCH DISPOSAL SHALL NOT CREATE AND UNSIGHTLY OR OBJECTIONABLE APPEARANCE OR DETRACT FROM THE NATURAL TOPOGRAPHIC FEATURES WITHOUT WRITTEN PERMISSION FROM THE ENGINEER.

DATE: 12-13-12

PREPARED BY: [Signature]
DISTRICT STUDIES & PLANS ENGINEER

EXAMINED BY: [Signature]
DISTRICT CONSTRUCTION ENGINEER

[Signature]
DISTRICT MATERIALS ENGINEER

[Signature]
DISTRICT OPERATIONS ENGINEER

FILE NAME *	USER NAME * woodsherkrl	DESIGNED -	REVISED -
o:\pwwork\pwwork\woodsherkrl\08314722\0366C64-htl-detaill.dgn	0366C64-htl-detaill.dgn	DRAWN -	REVISED -
MODELNAME	PLOT SCALE * 100.0000' / 1"	CHECKED -	REVISED -
	PLOT DATE * 12/4/2012	DATE -	REVISED -

STATE OF ILLINOIS
DEPARTMENT OF TRANSPORTATION

GENERAL NOTES

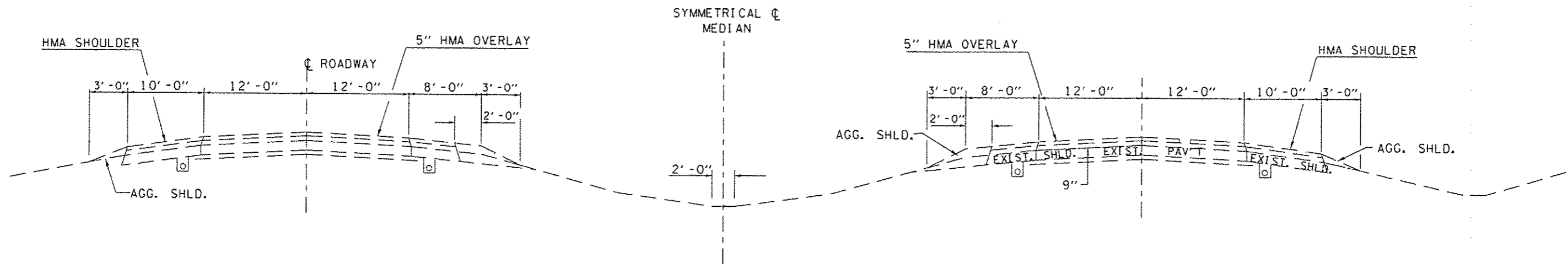
SCALE: SHEET 1 OF 1 SHEETS STA. TO STA.

F.A.I. RTE.	SECTION	COUNTY	TOTAL SHEETS	SHEET NO.
55	(53-5VB-1)1-2	LIVINGSTON	7	2
CONTRACT NO. 66C64				
ILLINOIS FED. AID PROJECT				

CODE NO.	ITEM	UNIT	TOTAL QUANTITY	CONSTR. CODE
				STATE FUNDS 100% STATE STRUCTURE 0014 RURAL
67100100	MOBILIZATION	L SUM	1	1
X0325748	ACRYLIC COATING	SQ YD	28	28
X0325749	FIBER WRAP	SQ FT	128	128
Z0012754	STRUCTURAL REPAIR OF CONCRETE (DEPTH EQUAL TO OR LESS THAN 5 INCHES)	SQ FT	196	196
Z0073200	TEMPORARY SHORING AND CRIBBING	EACH	2	2

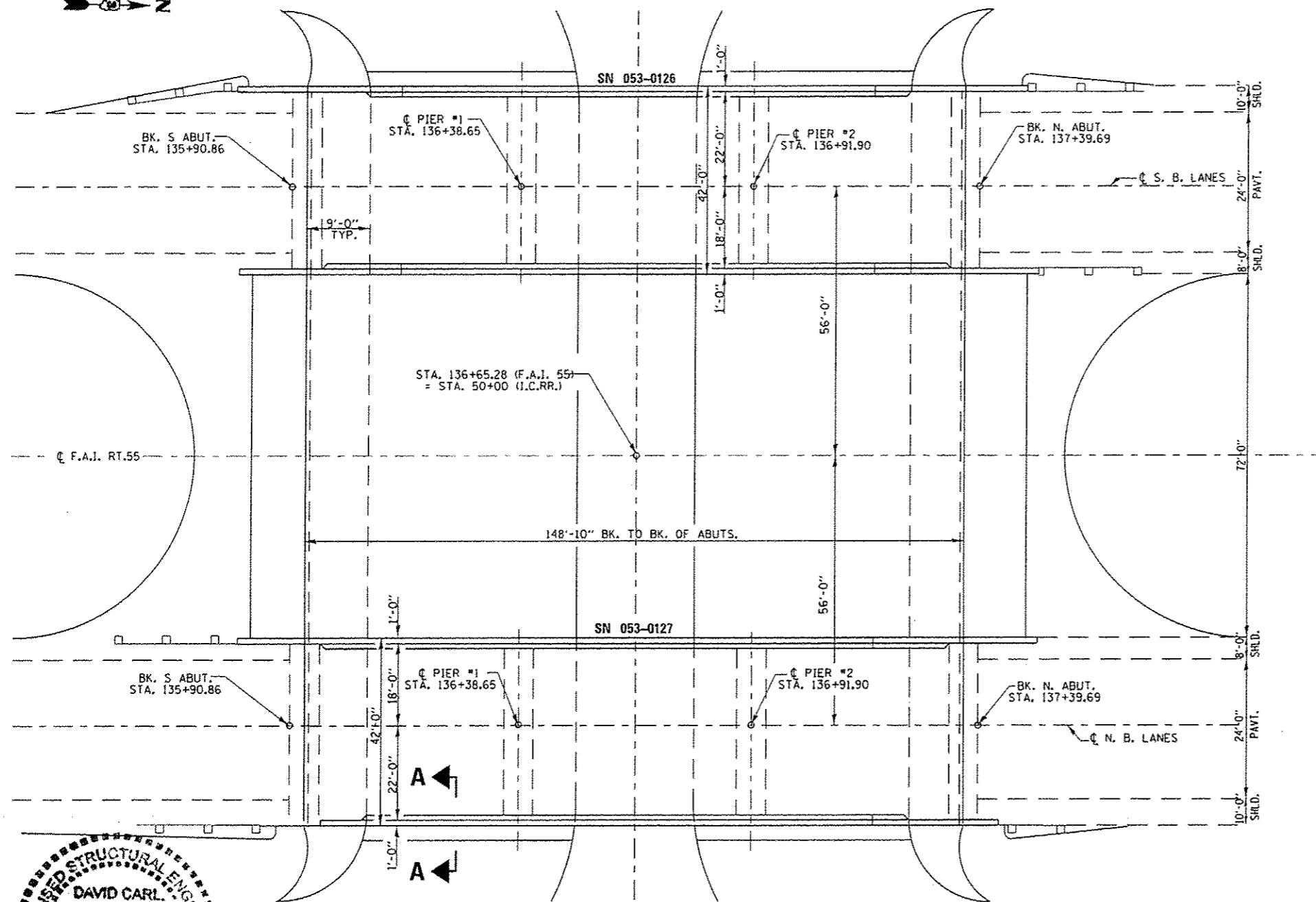
5

Rev.



TYPICAL DETAIL

FILE NAME =	USER NAME = woodshankr1	DESIGNED -	REVISED -	STATE OF ILLINOIS DEPARTMENT OF TRANSPORTATION	TYPICAL SECTION		F.A.I. RTE.	SECTION	COUNTY	TOTAL SHEETS	SHEET NO.
c:\pwwork\pwwork\woodshankr1\08314722\666664\shd-details.dgn	366664\shd-details.dgn	DRAWN -	REVISED -				55	(53-5VB-11-2)	LIVINGSTON	7	4
#MODELNAME#	PLOT SCALE = 1/80.0000' / in.	CHECKED -	REVISED -		SCALE: SHEET 1 OF 1 SHEETS STA. TO STA.		CONTRACT NO. 66C64				
	PLOT DATE = 12/4/2012	DATE -	REVISED -		ILLINOIS FED. AID PROJECT						



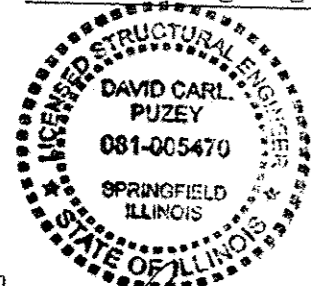
PLAN

GENERAL NOTES

PLAN DIMENSIONS AND DETAILS RELATIVE TO EXISTING PLANS ARE SUBJECT TO NOMINAL CONSTRUCTION VARIATIONS. THE CONTRACTOR SHALL FIELD VERIFY EXISTING DIMENSIONS AND DETAILS AFFECTING NEW CONSTRUCTION AND MAKE NECESSARY APPROVED ADJUSTMENTS PRIOR TO CONSTRUCTION OR ORDERING OF MATERIALS. SUCH VARIATIONS SHALL NOT BE CAUSE FOR ADDITIONAL COMPENSATION FOR A CHANGE IN SCOPE OF WORK; HOWEVER, THE CONTRACTOR WILL BE PAID FOR THE QUANTITY ACTUALLY FURNISHED AT THE UNIT PRICE BID FOR THE WORK.

REINFORCEMENT BARS DESIGNATED (E) SHALL BE EPOXY COATED.

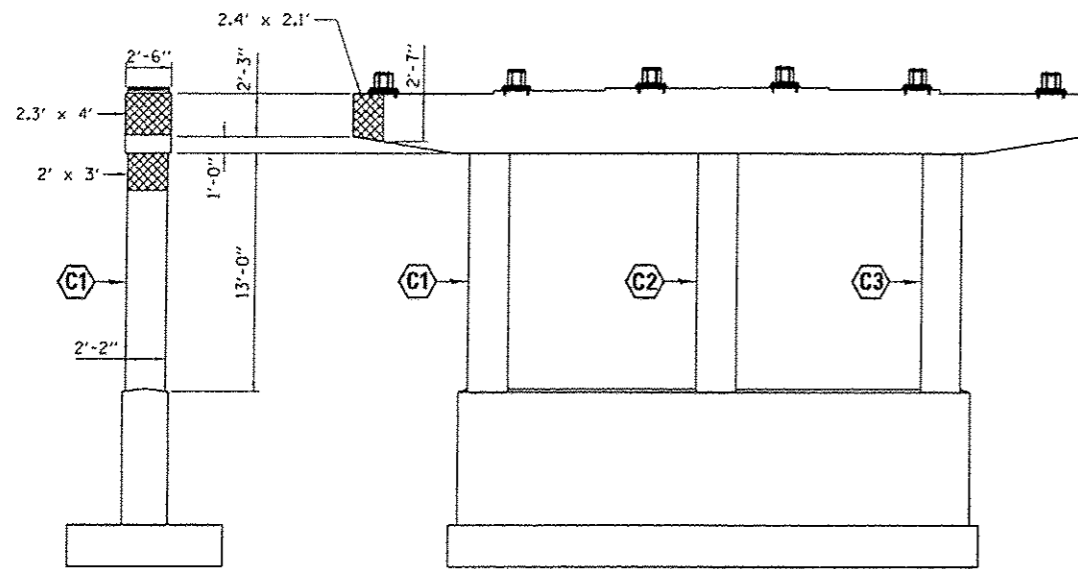
THE CONTRACTOR SHALL PROVIDE SUPPORT AND/OR SHORING SYSTEMS FOR THE BEAMS IN THE AREA OF STRUCTURAL REPAIR OF CONCRETE ADJACENT TO EXISTING BEARINGS. SEE SPECIAL PROVISION "TEMPORARY SHORING AND CRIBBING".



David Carl Puze 1/13/13
Expires 11/30/14

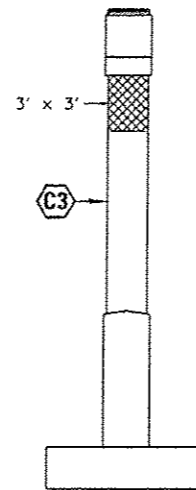
TOTAL BILL OF MATERIAL

ITEM	UNIT	0126	0127	TOTAL
STRUCTURAL REPAIR OF CONCRETE (DEPTH EQUAL TO OR LESS THAN 5")	SO FT	182	14	196
TEMPORARY SHORING AND CRIBBING	EACH	2		2
FIBER WRAP	SO FT	128		128
ACRYLIC COATING	SO YD	28		28

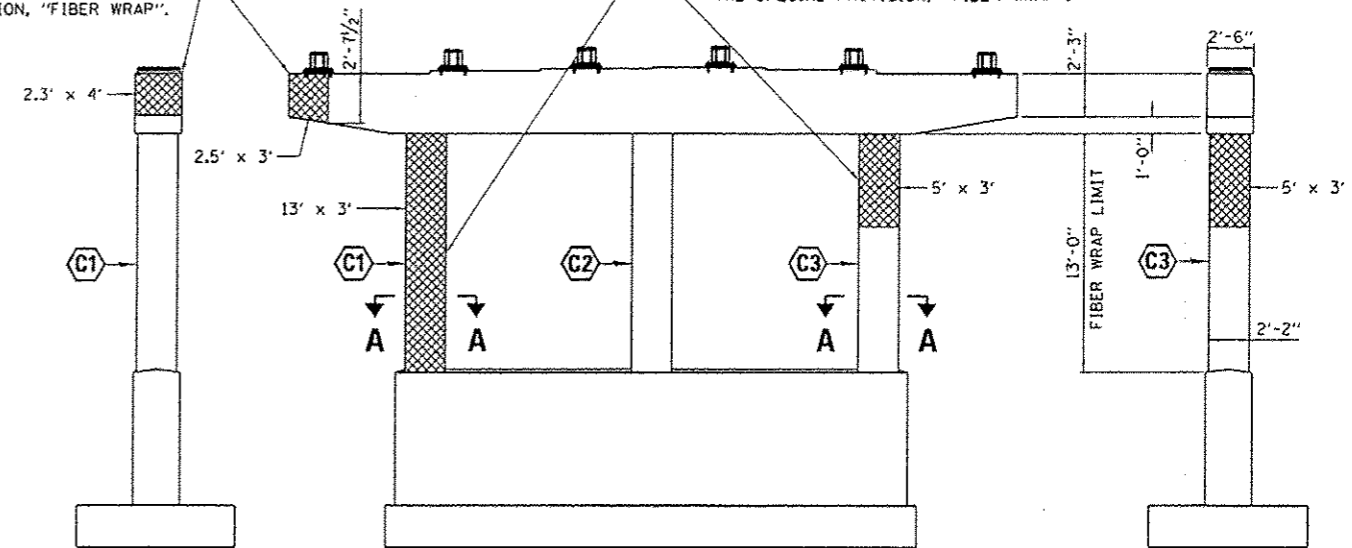


ELEVATION
WEST END

PIER 1 ELEVATION
(SOUTH PIER)
LOOKING NORTH



ELEVATION
EAST END



ELEVATION
WEST END

PIER 2 ELEVATION
(NORTH PIER)
LOOKING NORTH

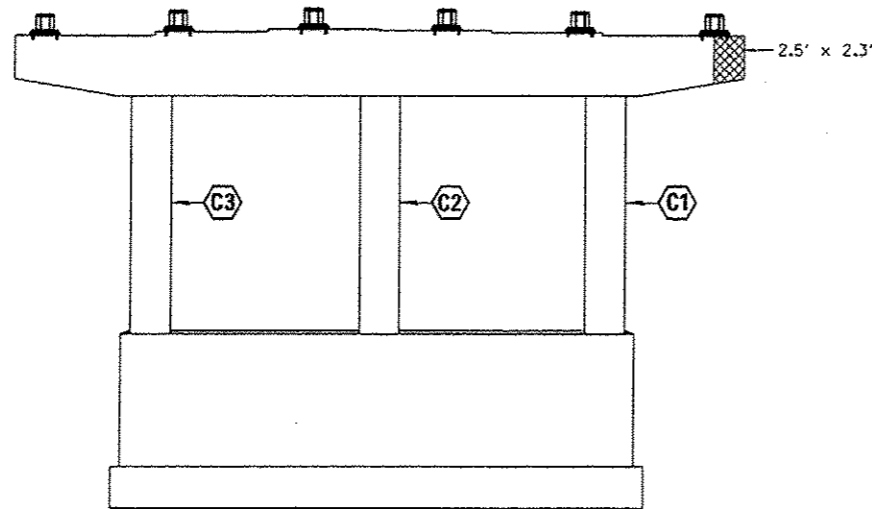
ELEVATION
EAST END

PIER CAP END SHALL BE COVERED WITH AN APPROVED CARBON FIBER WRAP. SEE THE SPECIAL PROVISION, "FIBER WRAP".

THESE COLUMNS SHALL BE COVERED WITH AN APPROVED CARBON FIBER WRAP. SEE THE SPECIAL PROVISION, "FIBER WRAP".

BEAM REACTION	
Q (k)	76
L (k)	44
Imp. (k)	13
Total (k)	133

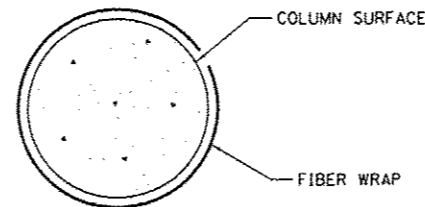
NOTE:
TEMPORARY SHORING FOR COLUMNS C1 & C3 IS TO BE INSTALLED PRIOR TO START OF WORK AT THESE LOCATIONS.



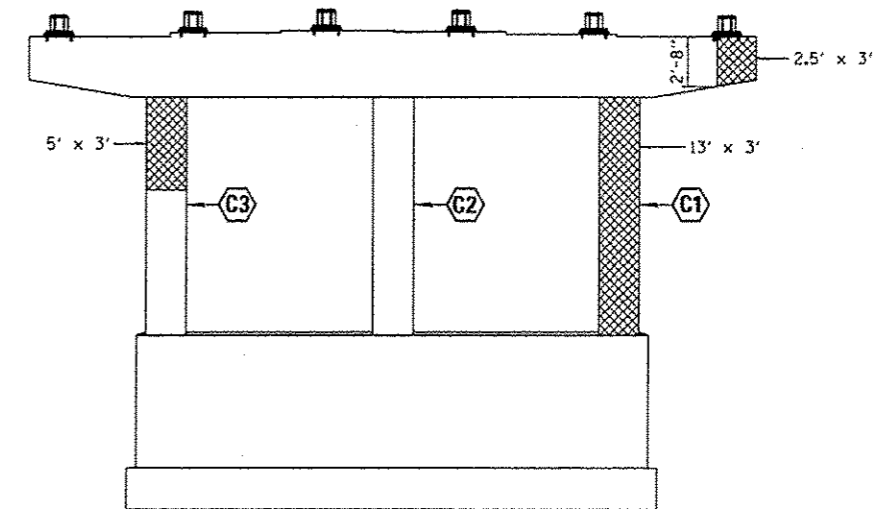
PIER 1 ELEVATION
(SOUTH PIER)
LOOKING SOUTH

COLUMN NO. = C1
MEASUREMENTS: V x H

STRUCTURAL REPAIR OF CONCRETE
DEPTH EQUAL TO OR LESS THAN 5"



SECTION A-A



PIER 2 ELEVATION
(NORTH PIER)
LOOKING SOUTH

BILL OF MATERIAL

ITEM	UNIT	TOTAL
STRUCTURAL REPAIR OF CONCRETE (DEPTH EQUAL TO OR LESS THAN 5")	SO FT	182
TEMPORARY SHORING AND CRIBBING	EACH	2
FIBER WRAP	SO FT	128
ACRYLIC COATING	SO YD	28

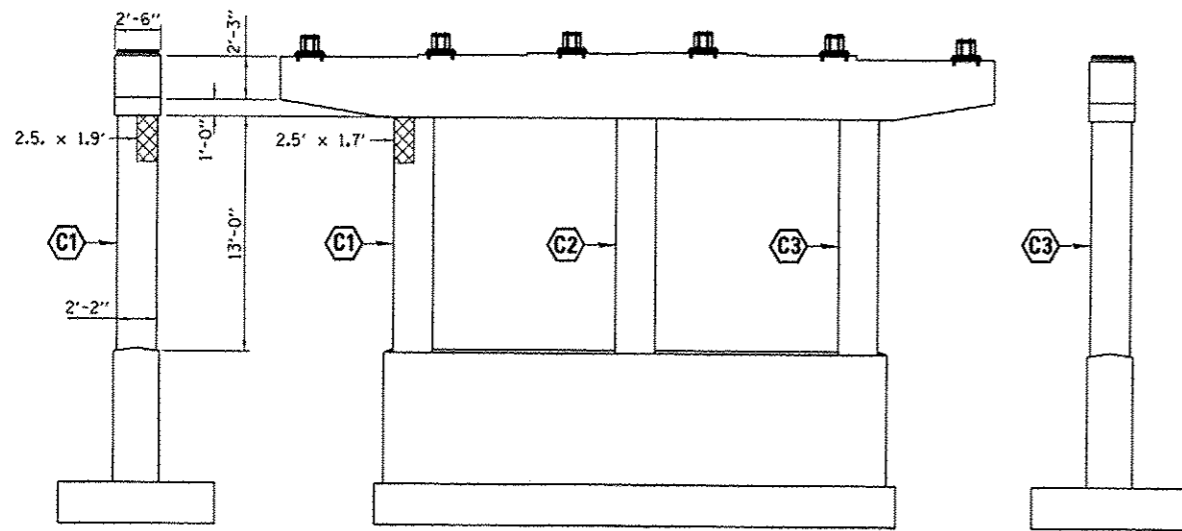
FILE NAME : c:\p\work\pvidot\woodshenrj\d8314722\66664-sh1-detail.dgn	USER NAME : woodshenrj	DESIGNED -	REVISED -
MODEL NAME :	PLOT SCALE : 100.0000' / 1"	DRAWN -	REVISED -
	PLOT DATE : 1/11/2013	CHECKED -	REVISED -
		DATE -	REVISED -

STATE OF ILLINOIS
DEPARTMENT OF TRANSPORTATION

PIER DETAILS FOR
STRUCTURE NO. 053-0126

SCALE: SHEET 2 OF 3 SHEETS STA. TO STA.

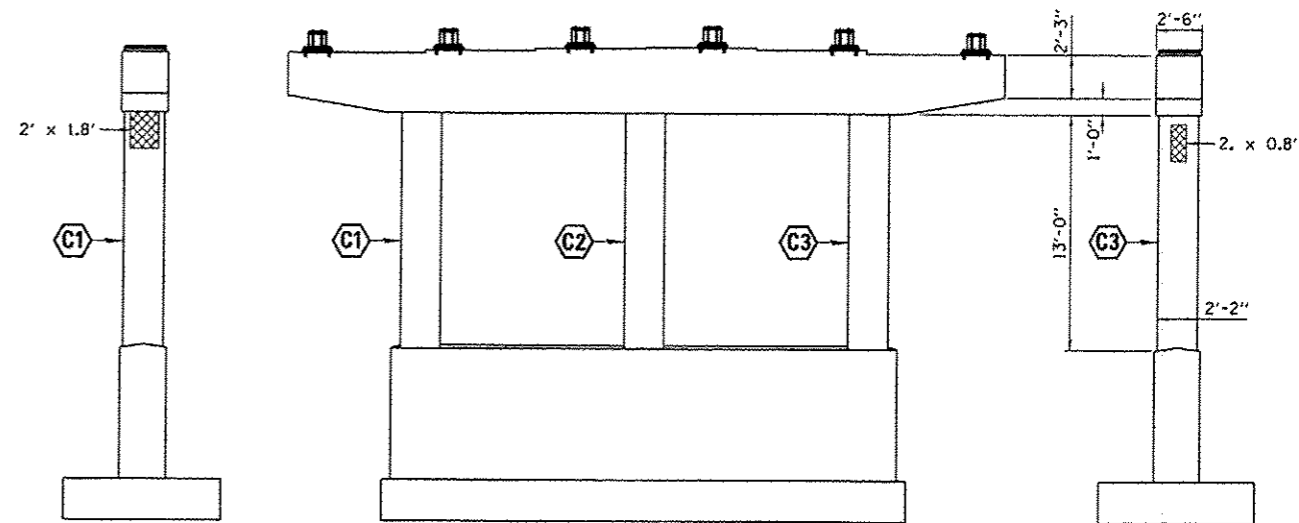
F.A.I. R.T.E. 55	SECTION (53-5VB-11-2)	COUNTY LIVINGSTON	TOTAL SHEETS 7	SHEET NO. 6
CONTRACT NO. 66C64			ILLINOIS FED. AID PROJECT	



ELEVATION
WEST END

PIER 1 ELEVATION
(SOUTH PIER)
LOOKING NORTH

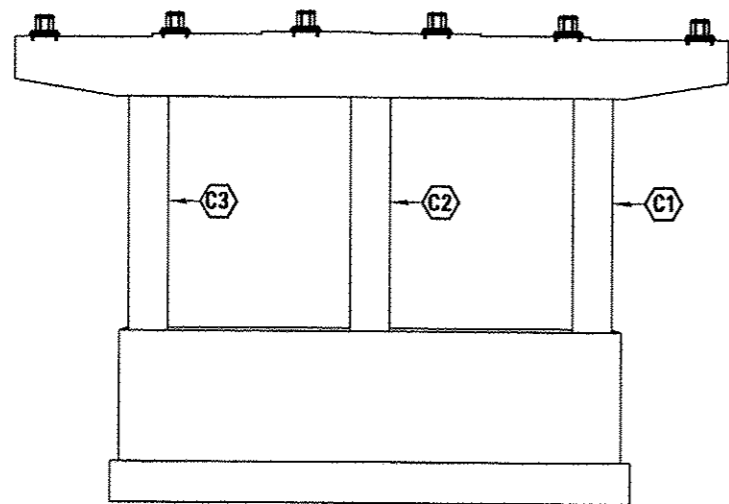
ELEVATION
EAST END



ELEVATION
WEST END

PIER 2 ELEVATION
(NORTH PIER)
LOOKING NORTH

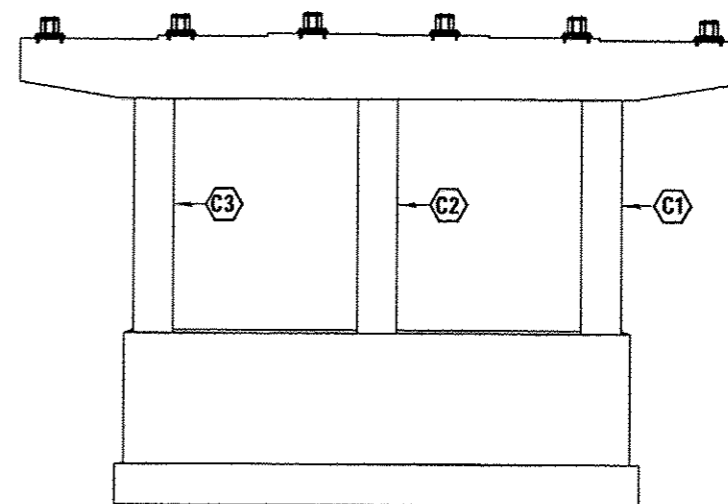
ELEVATION
EAST END



PIER 1 ELEVATION
(SOUTH PIER)
LOOKING SOUTH

COLUMN NO. = **C3**
MEASUREMENTS: V x H

 STRUCTURAL REPAIR OF CONCRETE
DEPTH EQUAL TO OR LESS THAN 5"



PIER 2 ELEVATION
(NORTH PIER)
LOOKING SOUTH

TOTAL BILL OF MATERIAL

ITEM	UNIT	TOTAL
STRUCTURAL REPAIR OF CONCRETE (DEPTH EQUAL TO OR LESS THAN 5")	SQ FT	14

FILE NAME =	USER NAME = woodshankr	DESIGNED -	REVISED -
c:\pwwork\psidot\woodshankr\148314722\	366C64.sht_details.dgn	DRAWN -	REVISED -
#MODELNAME#	PLOT SCALE = 1/88,8888 1/16"	CHECKED -	REVISED -
	PLOT DATE = 12/4/2012	DATE -	REVISED -

STATE OF ILLINOIS
DEPARTMENT OF TRANSPORTATION

PIER DETAILS FOR
STRUCTURE NO. 053-0127

F.A.I. RTE.	SECTION	COUNTY	TOTAL SHEETS	SHEET NO.
55	(53-5VB-1)I-2	LIVINGSTON	7	7

CONTRACT NO. 66C64
ILLINOIS FED. AID PROJECT

SCALE: SHEET 3 OF 3 SHEETS STA. TO STA.