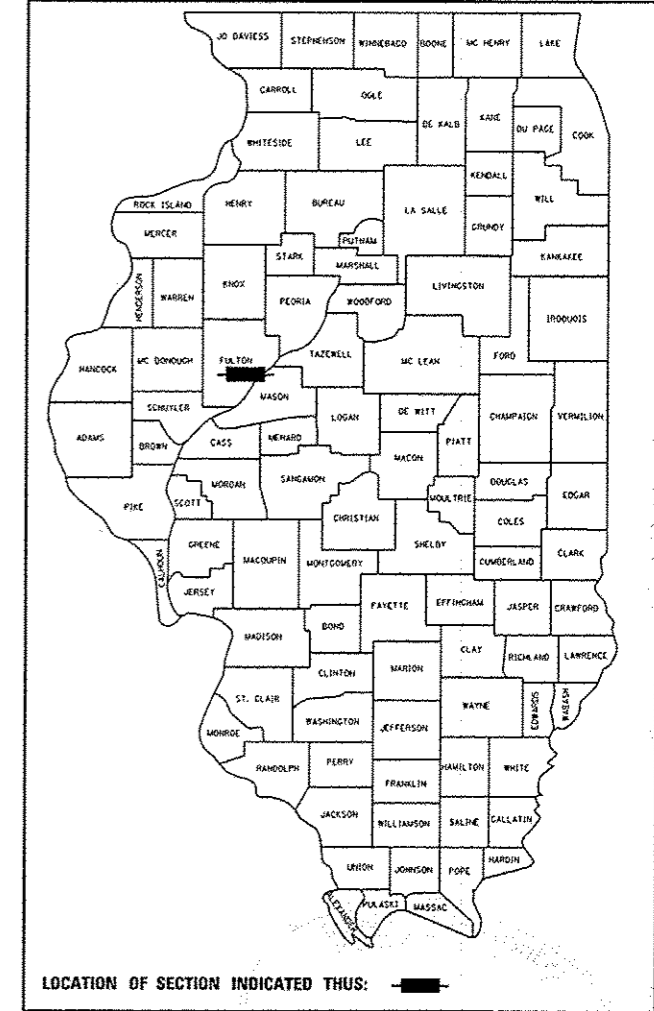


STATE OF ILLINOIS
DEPARTMENT OF TRANSPORTATION
DIVISION OF HIGHWAYS
PROPOSED
HIGHWAY PLANS

| | | | | |
|---------------|-----------------|----------|--------------------|-----------|
| F.A.P. R.T.E. | SECTION | COUNTY | TOTAL SHEETS | SHEET NO. |
| 317 | (137BR, BR-1)BR | FULTON | 118 | 1 |
| | | ILLINOIS | CONTRACT NO. 68699 | |

D-94-028-07



FOR INDEX OF SHEETS, SEE SHEET NO. 2
FOR LIST OF HIGHWAY STANDARDS, SEE SHEET NO. 2

DESCRIPTION OF WORK

THIS PROJECT CONSISTS OF REMOVING AND REPLACING TWO BRIDGES, ONE OVER LITTLE SISTER CREEK AND ONE OVER BIG SISTER CREEK. 3,100 FEET OF US 24 ROADWAY WILL ALSO BE IMPROVED. THE INTERSECTION OF GRAIN BIN RD/MUDD RD WITH US 24 WILL BE RELOCATED APPROXIMATELY 95 FEET TO THE WEST. CONSTRUCTION OF APPROXIMATELY 1,050 FEET OF GRAIN BIN RD AND 350 FEET OF MUDD RD WILL BE RECONSTRUCTED. THE PROJECT INCLUDES PAVEMENT WIDENING RESURFACING, GUARDRAIL IMPROVEMENTS, DRAINAGE IMPROVEMENTS, PAVEMENT MARKINGS, LANDSCAPING, CONSTRUCTION STAGING AND ALL INCIDENTAL AND COLLATERAL WORK NECESSARY TO COMPLETE THE IMPROVEMENT.

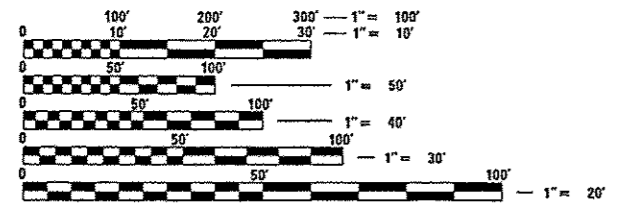
FAP ROUTE 317 (US 24)
SECTION (137BR, BR-1)BR
PROJECT NHPP-0317(095)
FULTON COUNTY
BRIDGE REPLACEMENT
C-94-032-07

TRAFFIC DATA

2009 ADT = 4150
 SU = 4.2% MU=7.2%
 2019 ADT = 6071/6024

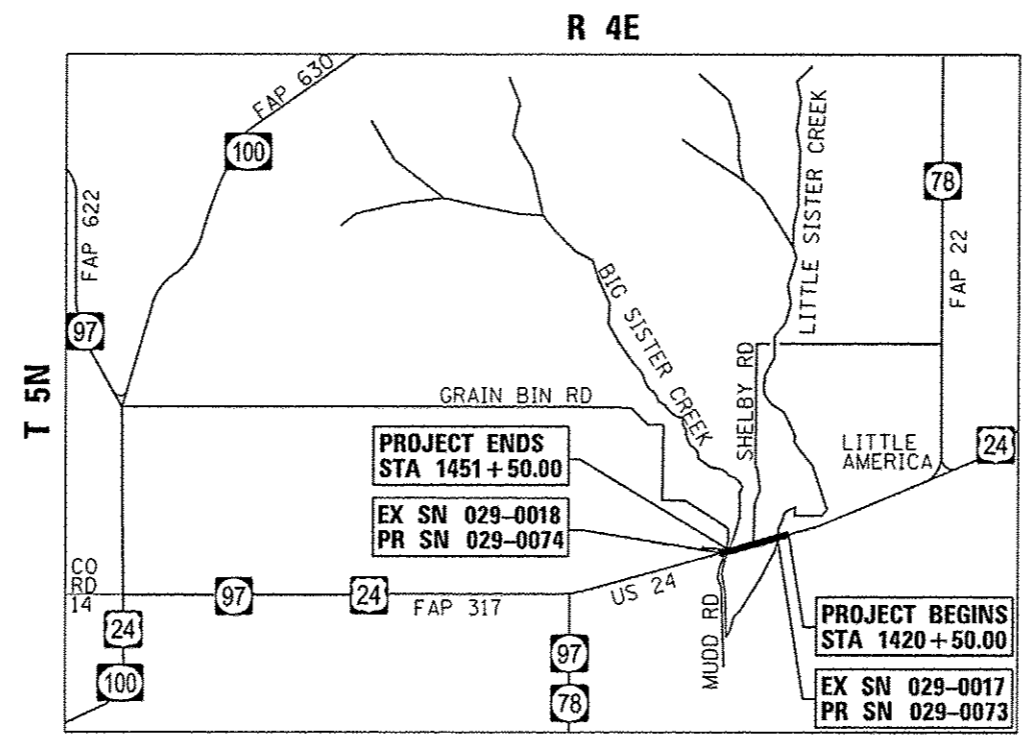
DESIGN DESIGNATION

OTHER PRINCIPAL ARTERIAL

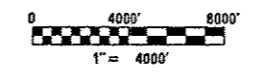


FULL SIZE PLANS HAVE BEEN PREPARED USING STANDARD ENGINEERING SCALES. REDUCED SIZED PLANS WILL NOT CONFORM TO STANDARD SCALES. IN MAKING MEASUREMENTS ON REDUCED PLANS, THE ABOVE SCALES MAY BE USED.

J.U.L.I.E.
 JOINT UTILITY LOCATION INFORMATION FOR EXCAVATION
 1-800-892-0123
 OR 811



LOCATION MAP



GROSS LENGTH = 3,000 FT. = 0.568 MILE
 NET LENGTH = 3,000 FT. = 0.568 MILE

STATE OF ILLINOIS
 DEPARTMENT OF TRANSPORTATION
 DIVISION OF HIGHWAYS

SUBMITTED Dec 21 2012
Joseph E. [Signature]
 DEPUTY DIRECTOR OF HIGHWAYS, REGION ENGINEER

Feb 1 2013
John D. Baranzelli, P.E.
 acting ENGINEER OF DESIGN AND ENVIRONMENT

Feb 1 2013
Omer Osman, P.E.
 DIRECTOR OF HIGHWAYS, CHIEF ENGINEER

PRINTED BY THE AUTHORITY
OF THE STATE OF ILLINOIS

NPDES Permit Required



Signed: [Signature] 12/19/2012
 OLUFEMI A. OLADEINDE, P.E., S.E. Date
 LICENSE EXPIRES 11-30-2013



DESIGN BY: STRUCTURE DESIGNS, INC.