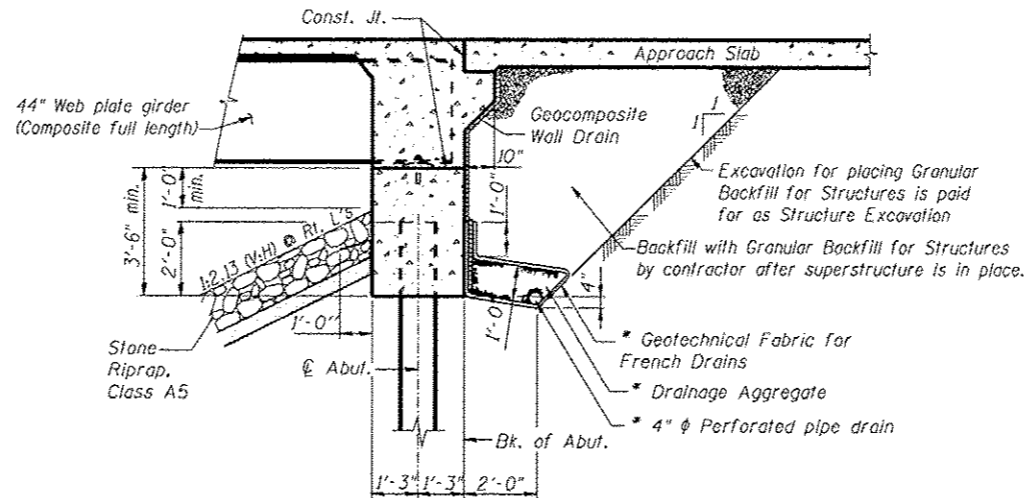


GENERAL NOTES

- Fasteners shall be ASTM A325 Type 1, mechanically galvanized bolts in painted areas and ASTM A325 Type 3 in unpainted areas. Bolts $\frac{3}{4}$ in. ϕ , holes $\frac{15}{16}$ in. ϕ , unless otherwise noted.
- Calculated weight of Structural Steel = 115,000 Pounds.
- All structural steel shall be AASHTO M 270 Grade SOW.
- No field welding is permitted except as specified in the contract documents.
- Reinforcement bars designated (E) shall be epoxy coated.
- Structural steel shall only be painted for a distance equal to the depth of embedment into the concrete cap plus 3 inches. Painted areas shall be primed in the shop with a Department approved zinc rich primer. Field painting will not be required.
- Layout of slope protection system may be varied in the field to suit ground conditions in the field as directed by the Engineer.
- The embankment configuration shown shall be the minimum that must be placed and compacted prior to construction of the abutments.
- Excavation behind existing abutment walls shall be performed to balance front and back soil pressure before removing the existing superstructure. The Contractor shall sawcut the upper portion of the existing abutment at the stage removal line before Stage 1 removal to ensure the remaining portion will not be prematurely damaged.
- Slipforming of the parapets is not allowed
- Piles shall be driven through 21 in. diameter precored holes extending through existing concrete footing at Elevation 431.99. Cost included in Driving Piles.



SECTION THRU ABUTMENT (TYP.)
(Horiz. Dim. @ Rt. L's)

* Include in the cost of Pipe Underdrain for Structures 4"

Notes:

All drainage system components shall extend to 2'-0" from the end of each wingwall except an outlet pipe shall extend until intersecting with the side slopes. The pipes shall drain into concrete headwalls. (See Article 601.05 of the Standard Specifications and Highway Standard 601101)

TOTAL BILL OF MATERIAL

ITEM	UNITS	SUPER.	SUB	TOTAL
Removal of Existing Structures	Each			1
Structure Excavation	Cu. Yd.		75	75
Granular Backfill for Structures	Cu. Yd.		125	125
Stone Riprap, Class A5	Sq. Yd.		1,370	1,370
Filter Fabric	Sq. Yd.		827	827
Concrete Encasement	Cu. Yd.		8.8	8.8
Concrete Structures	Cu. Yd.		62.6	62.6
Concrete Superstructure	Cu. Yd.	269		269
Bridge Deck Grooving	Sq. Yd.	583		583
Protective Coat	Sq. Yd.	726		726
Furnishing and Erecting Structural Steel	L. Sum	0.5		0.5
Stud Shear Connectors	Each	1620		1620
Reinforcement Bars, Epoxy Coated	Pound	56,330	10,460	66,790
Bar Splicers	Each	522	100	622
Furnishing Steel Piles HP14x89	Foot		434	434
Driving Piles	Foot		434	434
Test Pile Steel HP14x89	Each		1	1
Geocomposite Wall Drain	Sq. Yd.		103	103
Name Plates	Each	1		1
Anchor Bolts, 1"	Each		24	24
Floor Drains	Each	12		12
Pipe Underdrains for Structures 4"	Foot		132	132
Temporary Sheet Piling	Sq. Ft.		705	705

STATION 1446+92.50
BUILT BY
STATE OF ILLINOIS
FA RTE. 317 SEC. 137-BR-1
LOADING HL-93
STR. NO. 029-0074

NAME PLATE
See Std. 515001