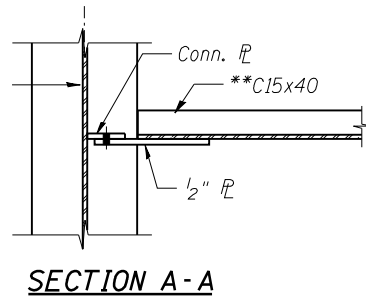


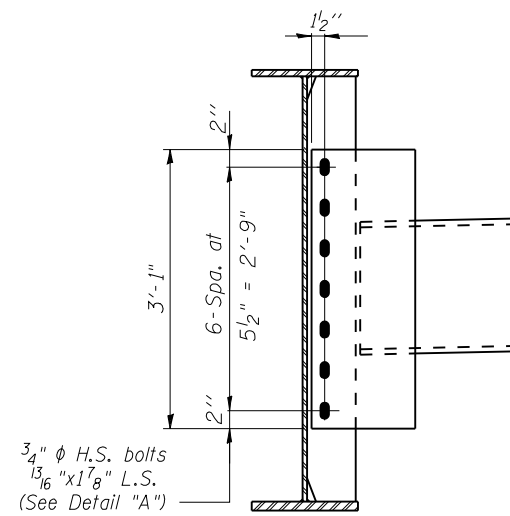
INTERIOR DIAPHRAGM D1



Note
Two hardened washers required for each set of oversized holes.

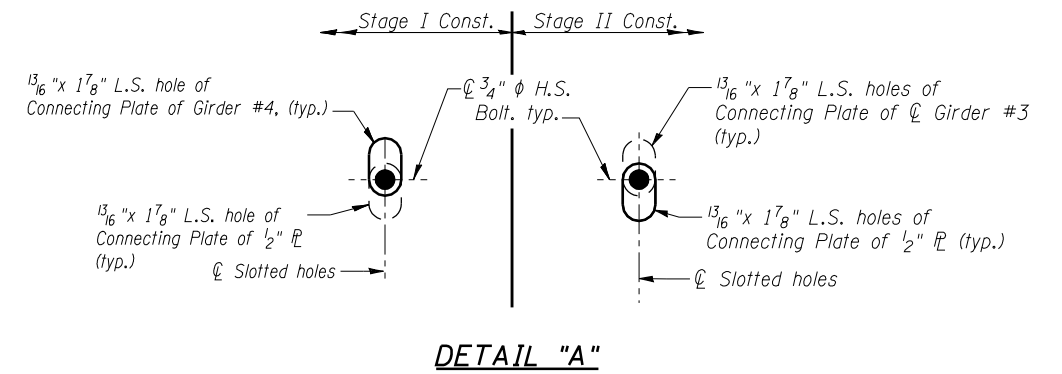
** C15x50 are permitted to facilitate material acquisition. Calculated weight of structural steel is based on the lighter section. The alternate, if utilized, shall be provided at no extra cost to the department.

All Diaphragms & Connecting Plates shall be AASHTO M270 Grade 50W.



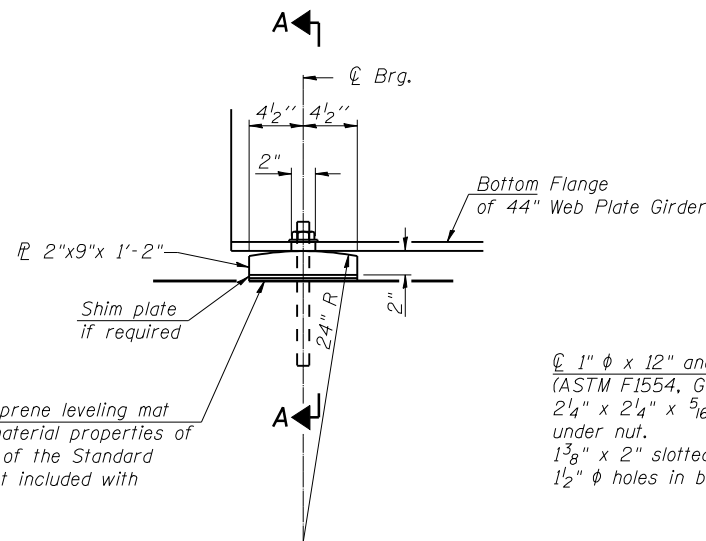
INTERIOR DIAPHRAGM D2

Details similar to D1, (Except as noted here)



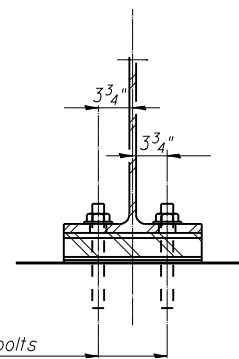
Note
Bolts shall be finger tight until Stage II Concrete pour is complete. Two hardened washers required for each set of long slot holes.

Position slots so bolts start at one end with no concrete load and finish near the opposite end under deck load.



ELEVATION AT ABUTMENT

FIXED BEARING



SECTION A-A

Note
Anchor bolts shall be ASTM F1554 all-thread (or an Engineer-approved alternate material) of the grade(s) and diameter(s) specified. The corresponding specified grade of AASHTO M314 anchor bolts may be used in lieu of ASTM F1554.
Anchor bolts may be either cast in place or installed in holes drilled after the supported member is in place. Drilled and set anchor bolts shall be installed according to Article 521.06 of the Standard Specifications.

USER NAME =	DESIGNED - LRT	REVISED -
	CHECKED - OAO	REVISED -
PLOT SCALE =	DRAWN - TCS	REVISED -
PLOT DATE =	CHECKED - LRT	REVISED -

F.A.P. RTE.	SECTION	COUNTY	TOTAL SHEETS	SHEET NO.
317	(137 BR, BR-1) BR	FULTON	118	77
CONTRACT NO. 68699				