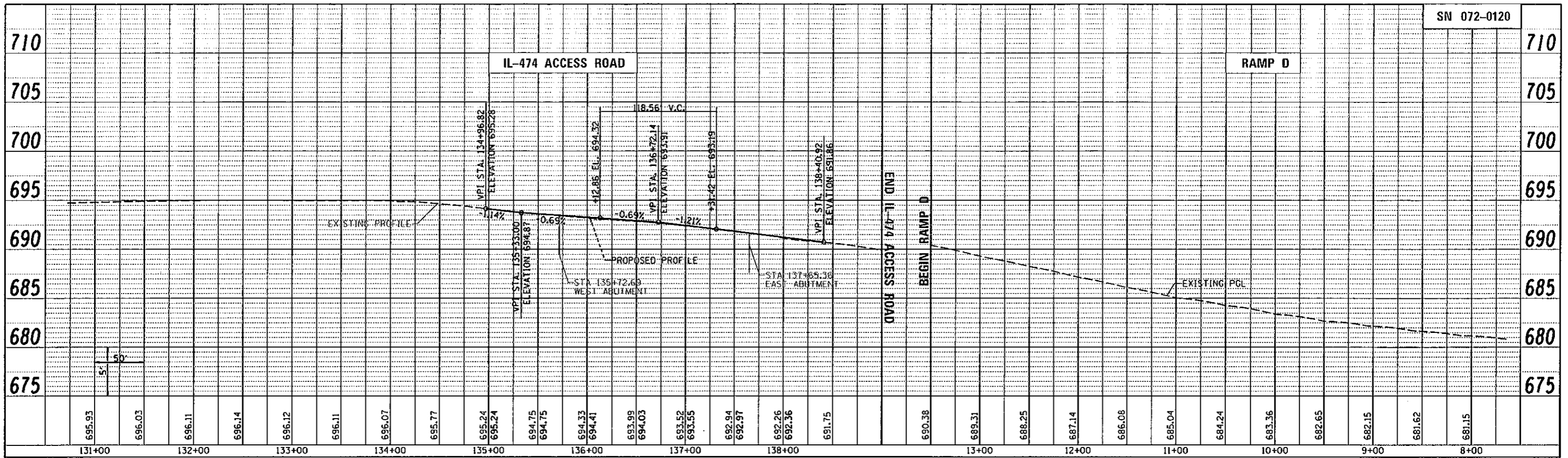
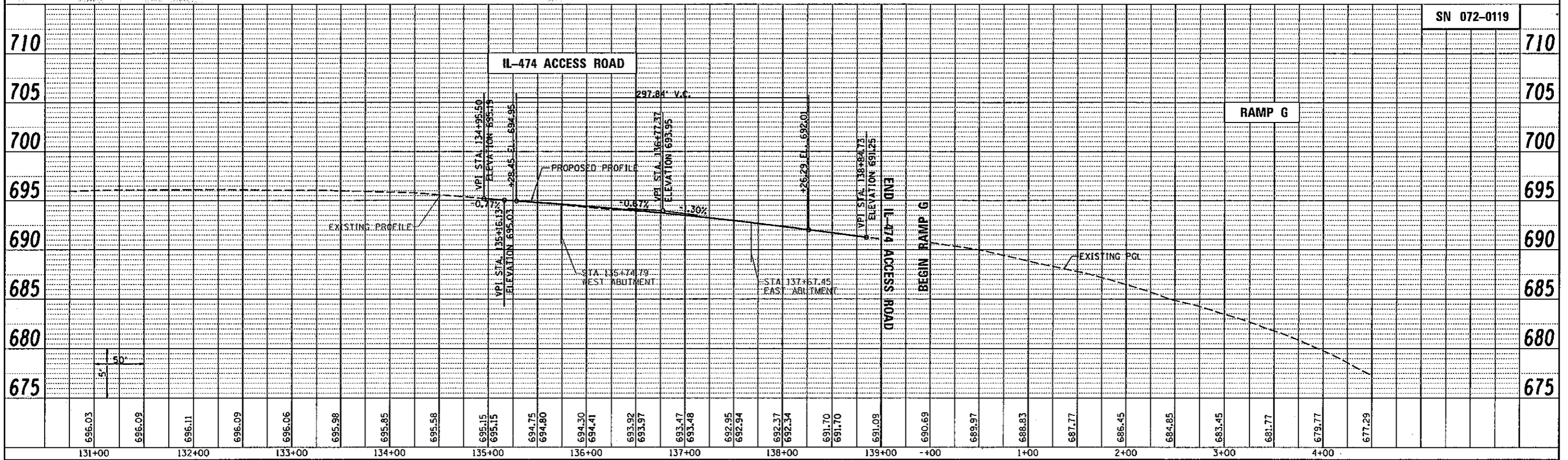


PLAN	SUBMITTED	BY	DATE
NOTE BOOK	PLOTTED		
NO.	PROJECT		
	FILE NAME		



PROFILE	SUBMITTED	BY	DATE
NOTE BOOK	PLOTTED		
NO.	PROJECT		
	FILE NAME		



FILE NAME = 0468883-Sht-profile.dgn	USER NAME = jonesca	DESIGNED -	REVISED -	STATE OF ILLINOIS DEPARTMENT OF TRANSPORTATION	PROFILE			F.A.I. RTE. 474	SECTION (72-3HG-1), I	COUNTY PEORIA	TOTAL SHEETS 89	SHEET NO. 13
	PLOT SCALE = 1/8" = 1'-0"	DRAWN -	REVISED -		MAXWELL ROAD CONNECTOR OVER I-474			MAXWELL RD. CONN. OVER I-474 CONTRACT NO. 68883				
	PLOT DATE = 12/11/2012	CHECKED -	REVISED -		SCALE: AS SHOWN			SHEET NO. OF SHEETS STA. TO STA.				
		DATE -	REVISED -		ILLINOIS FED. AID PROJECT							