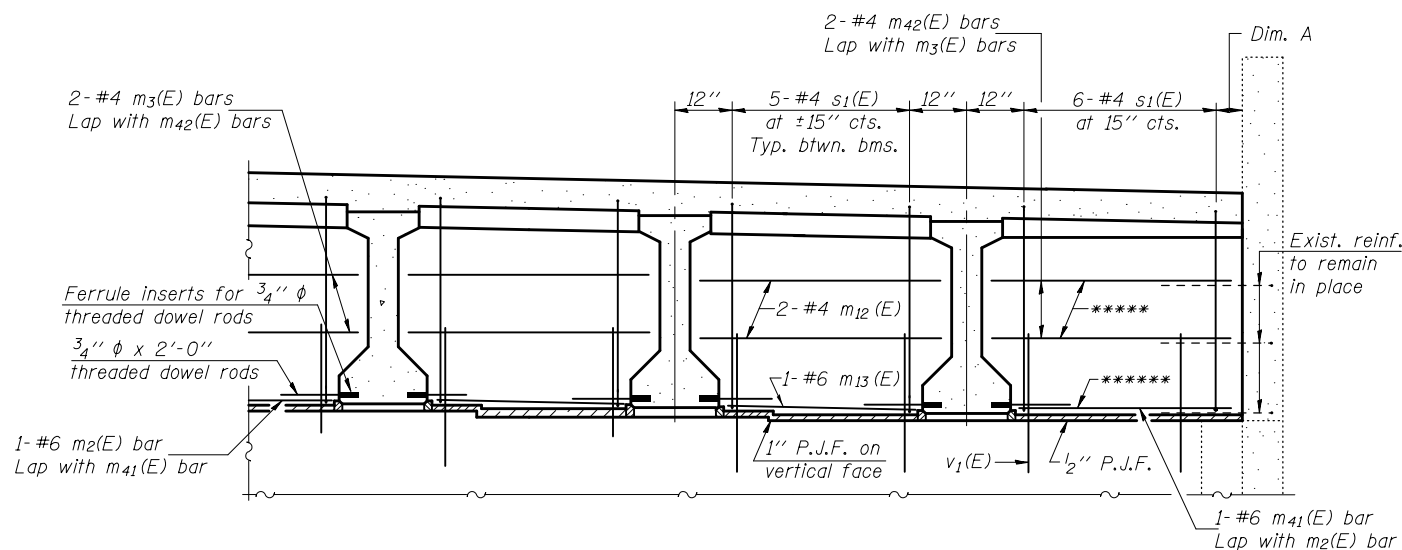


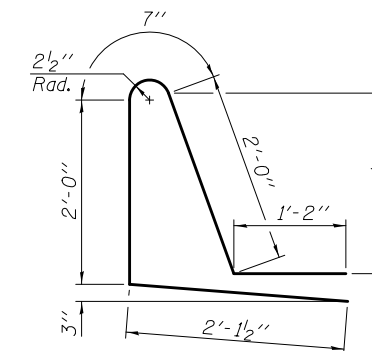
Dim. A = 8<sup>3</sup>/<sub>4</sub>" (North end), 12" (South end)



**DIAPHRAGM AT APPROACH BENT**

For location of m<sub>2</sub>(E), m<sub>3</sub>(E), m<sub>12</sub>(E), m<sub>13</sub>(E), m<sub>41</sub>(E), m<sub>42</sub>(E), m<sub>45</sub>(E), m<sub>46</sub>(E), m<sub>49</sub>(E), and m<sub>50</sub>(E) bars, see Section A-A on sheet 28 of 62.

\*\*\*\*\*2-#4 m<sub>49</sub>(E) bars (North end)  
 2-#4 m<sub>45</sub>(E) bars (South end)  
 \*\*\*\*\*1-#6 m<sub>50</sub>(E) bar (North end)  
 1-#6 m<sub>46</sub>(E) bar (South end)



**BAR d3(E)**

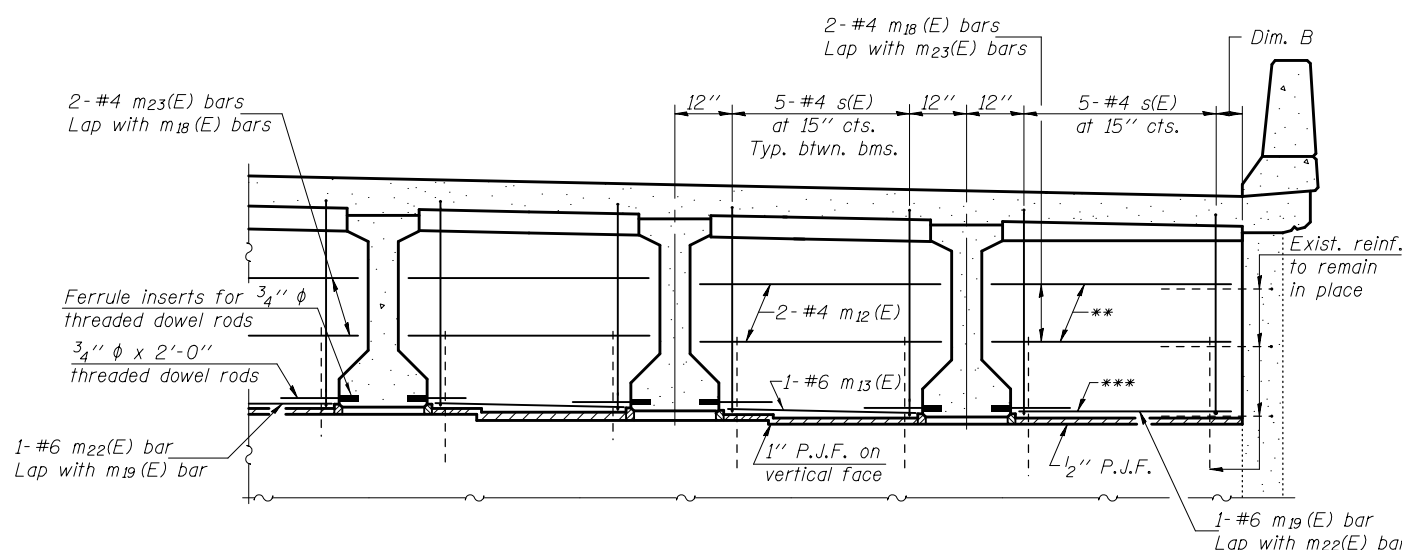
**MIN. BAR LAPS**

#4 bar = 2'-7"  
 #6 bar = 3'-10"

**ONE APPROACH SLAB  
 BILL OF MATERIAL**

| Bar                              | No. | Size    | Length  | Shape |
|----------------------------------|-----|---------|---------|-------|
| a <sub>2</sub> (E)               | 56  | #6      | 6'-0"   | —     |
| a <sub>8</sub> (E)               | 61  | #5      | 22'-0"  | —     |
| a <sub>9</sub> (E)               | 47  | #5      | 34'-7"  | —     |
| a <sub>2</sub> (E)               | 61  | #5      | 34'-0"  | —     |
| a <sub>3</sub> (E)               | 47  | #5      | 21'-5"  | —     |
| b <sub>5</sub> (E)               | 92  | #5      | 36'-10" | —     |
| b <sub>6</sub> (E)               | 12  | #5      | 34'-10" | —     |
| d(E)                             | 78  | #5      | 5'-7"   | ⌒     |
| d <sub>3</sub> (E)               | 78  | #5      | 7'-11"  | ⌒     |
| e <sub>10</sub> (E)              | 16  | #4      | 34'-10" | —     |
| e <sub>11</sub> (E)              | 2   | #8      | 34'-10" | —     |
| m <sub>2</sub> (E)               | 1   | #6      | 29'-0"  | —     |
| m <sub>3</sub> (E)               | 2   | #4      | 28'-3"  | —     |
| m <sub>12</sub> (E)              | 22  | #4      | 6'-2"   | —     |
| m <sub>13</sub> (E)              | 10  | #6      | 5'-2"   | —     |
| m <sub>18</sub> (E)              | 2   | #4      | 23'-11" | —     |
| m <sub>19</sub> (E)              | 1   | #6      | 23'-9"  | —     |
| m <sub>20</sub> (E)              | 2   | #4      | 5'-11"  | —     |
| m <sub>21</sub> (E)              | 1   | #6      | 5'-5"   | —     |
| m <sub>22</sub> (E)              | 1   | #6      | 28'-0"  | —     |
| m <sub>23</sub> (E)              | 2   | #4      | 26'-7"  | —     |
| m <sub>24</sub> (E)              | 1   | #6      | 5'-8"   | —     |
| m <sub>41</sub> (E)              | 1   | #6      | 25'-9"  | —     |
| m <sub>42</sub> (E)              | 2   | #4      | 25'-3"  | —     |
| m <sub>45</sub> (E)              | 2   | #4      | 7'-9"   | —     |
| m <sub>46</sub> (E)              | 1   | #6      | 7'-3"   | —     |
| m <sub>49</sub> (E)              | 2   | #4      | 7'-6"   | —     |
| m <sub>50</sub> (E)              | 1   | #6      | 7'-0"   | —     |
| s(E)                             | 35  | #4      | 8'-9"   | ⌒     |
| s <sub>1</sub> (E)               | 37  | #4      | 7'-6"   | ⌒     |
| v(E)                             | 54  | #5      | 3'-9"   | ⌒     |
| Reinforcement Bars, Epoxy Coated |     | Pound   | 13,570  |       |
| Concrete Superstructure          |     | Cu. Yd. | 74.1    |       |

Dim. B = 8<sup>7</sup>/<sub>8</sub>" (North end), 6" (South end)



**DIAPHRAGM AT ABUTMENT**

For location of m<sub>12</sub>(E) & m<sub>13</sub>(E) and m<sub>18</sub>(E) thru m<sub>24</sub>(E) bars, see Section B-B on sheet 28 of 62.

\*\*2-#4 m<sub>12</sub>(E) bars (North end)  
 2-#4 m<sub>20</sub>(E) bars (South end)  
 \*\*\*1-#6 m<sub>24</sub>(E) bar (North end)  
 1-#6 m<sub>21</sub>(E) bar (South end)

|             |                    |                       |                            |
|-------------|--------------------|-----------------------|----------------------------|
| FILE NAME = | USER NAME = *USER* | DESIGNED K.A. KLUES   | REVISED - 12/17/12 DHC/JKS |
| *FILE*      |                    | CHECKED E.M. LAGEMANN | Del. Staging (IDOT)        |
|             | PLOT SCALE =       | DRAWN K.A. KLUES      | REVISED -                  |
|             | PLOT DATE = *DATE* | CHECKED E.M. LAGEMANN | REVISED -                  |

STATE OF ILLINOIS  
 DEPARTMENT OF TRANSPORTATION

HORNER &  
 SHIRIN, INC  
 ENGINEERS

SUPERSTRUCTURE DETAILS - SPAN 1 (W.B.)  
 STRUCTURE NOS. 072-0119 (E.B.) & 072-0120 (W.B.)

|                           |              |        |              |           |
|---------------------------|--------------|--------|--------------|-----------|
| F.A.I. RTE.               | SECTION      | COUNTY | TOTAL SHEETS | SHEET NO. |
| 474                       | (72-3HB-1),I | PEORIA | 88           | 46        |
| CONTRACT NO. 68883        |              |        |              |           |
| ILLINOIS FED. AID PROJECT |              |        |              |           |

SHEET NO. 30 OF 62 SHEETS