

A ← → B

36'-5" End-to-end beam

3 spa. at 6" = 1'-6" Spacing #4 G₂ bars. Lap with G₁ bars.

15 Spaces at 6" = 7'-6" Spacing #3 G₄ bars.

18 spa. at 6" = 9'-0" Spacing #4 G₁ bars.

3-#5 G₃ bars full length of beam. (1 length)

Symm. about C except as noted.

60° min. angle of lift

C Lifting loop

3'-3"

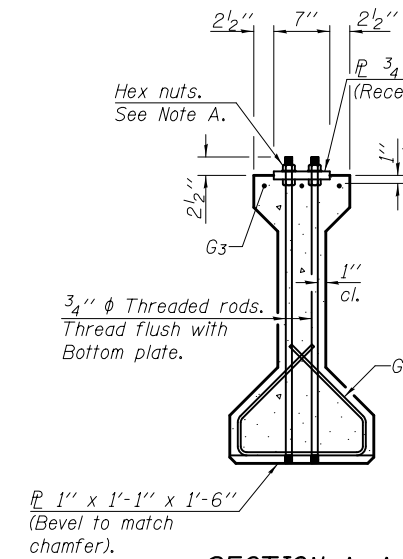
1 1/2"

1'-3" 3 spa. at 6" = 1'-6"

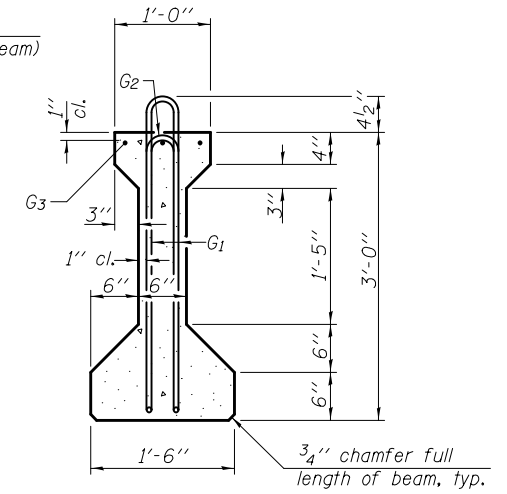
8 spa. at 9" = 6'-0" 5 1/2" Spacing #4 G₁ bars.

ELEVATION OF BEAM
(Showing reinforcement & dimensions)

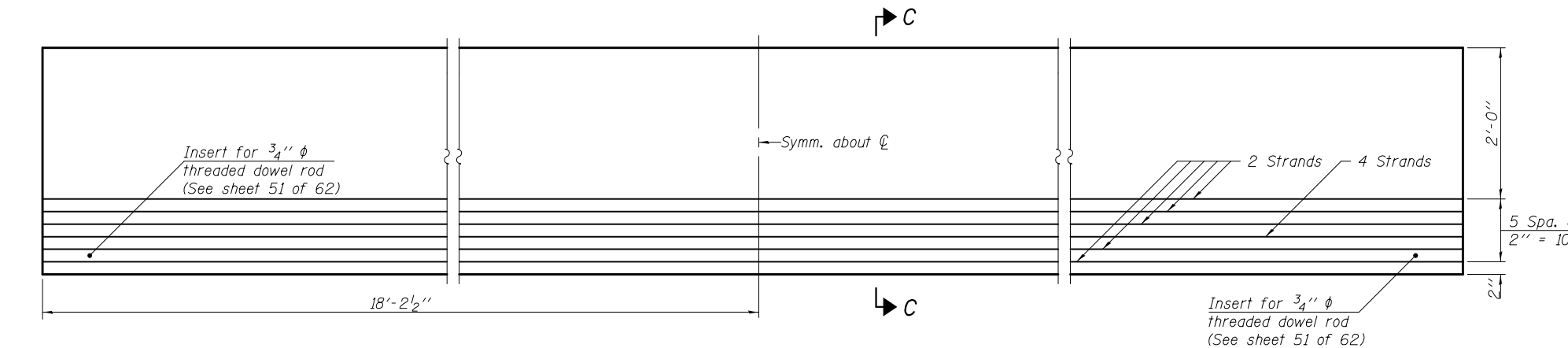
Note A:
Hex nuts (top and bottom) with lock washers (top). Only tighten sufficiently to compress lock washers.



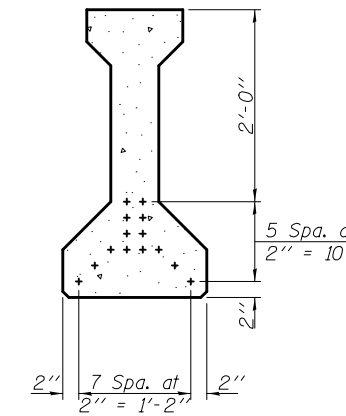
SECTION A-A



SECTION B-B



ELEVATION OF BEAM
(Showing prestressing steel)



SECTION C-C

*****BAR LIST
ONE BEAM ONLY**

Bar	No.	Size	Length	Shape
G ₁	60	#4	7'-5"	⊏
G ₂	8	#4	5'-8"	⊏
G ₃	3	#5	36'-3"	—
G ₄	38	#3	4'-1"	⊏

***For information only

Notes:
See sheet 51 of 62 for additional details and Bill of Material.
Required release strength, f'ci, shall be 5,000 psi.