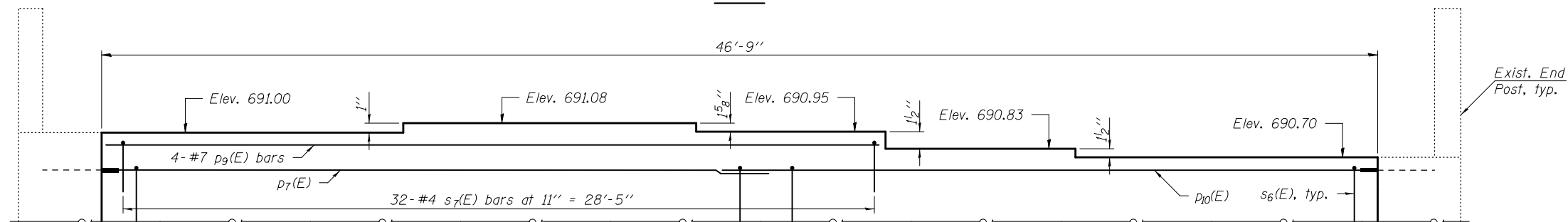
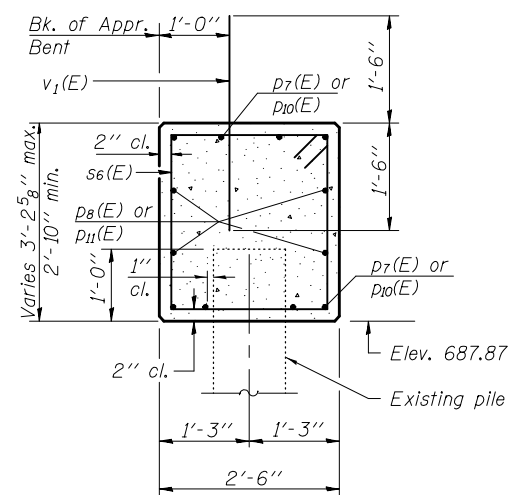


PLAN



APPROACH BENT STEP DETAIL
(Looking West)

MIN. BAR LAPS
 #5 bar = 3'-3"
 #7 bar = 5'-2"



SECTION A-A

Notes:
 Pour steps monolithically with cap.
 Existing reinforcement shall be cleaned and incorporated into the new construction. Cost included with Concrete Removal.
 Any reinforcement bars that are damaged during concrete removal operations shall be repaired using an approved bar splicer or anchorage system. Cost included with Concrete Removal.
 Existing piles to remain in place. Regions of piles to be embedded in new concrete shall be blast cleaned and incorporated into the new construction. Any damage to existing piles shall be repaired as directed by the Engineer. Cost included with Concrete Removal.
 The Contractor shall cut the existing reinforcement and bars p7(E) thru p11(E) to meet the manufacturer's specifications for the mechanical bar splicers.
 For bars s6(E) and s7(E) bending diagrams, see sheet 57 of 62.

BILL OF MATERIAL

Bar	No.	Size	Length	Shape
p7(E)	8	#7	25'-9"	—
p8(E)	4	#5	24'-9"	—
p9(E)	4	#7	28'-9"	—
p10(E)	8	#7	25'-10"	—
p11(E)	4	#5	24'-11"	—
s6(E)	59	#4	10'-1"	□
s7(E)	32	#4	3'-6"	□
v1(E)	42	#5	3'-0"	—
Structure Excavation			Cu. Yd.	33
Concrete Structures			Cu. Yd.	13.2
Reinforcement Bars, Epoxy Coated			Pound	1,890

FILE NAME =	USER NAME = #USER*	DESIGNED K.A. KLUES	REVISED - 12/17/12 DHC/JKS
#FILE*		CHECKED E.M. LAGEMANN	Del. Staging (IDOT)
	PLOT SCALE =	DRAWN K.A. KLUES	REVISED -
	PLOT DATE = #DATE*	CHECKED E.M. LAGEMANN	REVISED -

STATE OF ILLINOIS
DEPARTMENT OF TRANSPORTATION

HORNER & SHIRIN, INC.
ENGINEERS

WEST APPROACH BENT (W.B.)
STRUCTURE NOS. 072-0119 (E.B.) & 072-0120 (W.B.)

F.A.I. RTE.	SECTION	COUNTY	TOTAL SHEETS	SHEET NO.
474	(72-3HB-1),I	PEORIA	88	75
CONTRACT NO. 68883				

SHEET NO. 59 OF 62 SHEETS

ILLINOIS FED. AID PROJECT