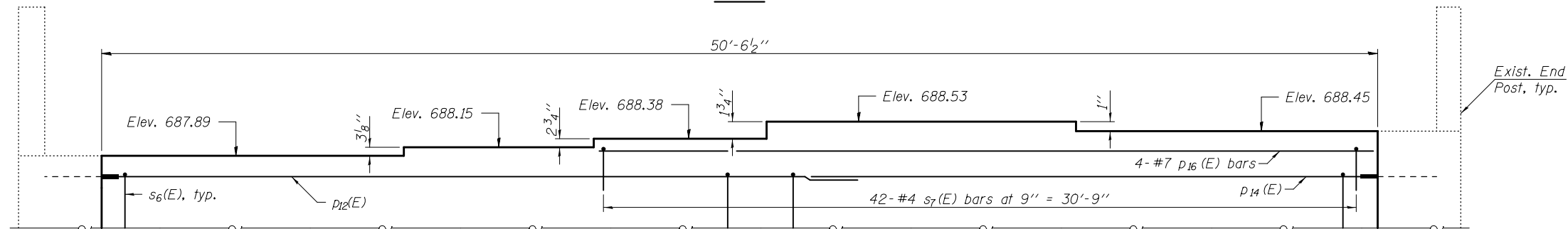
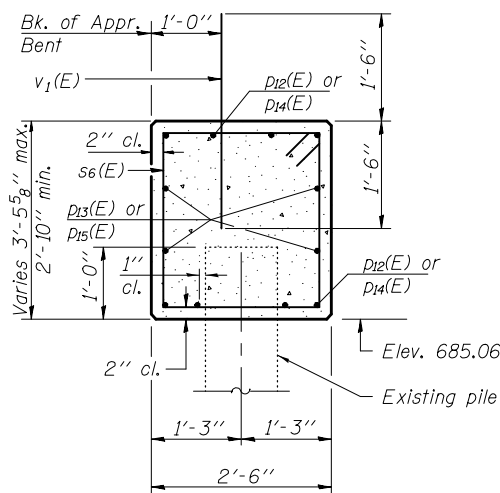


PLAN



APPROACH BENT STEP DETAIL
(Looking East)

MIN. BAR LAPS
 #5 bar = 3'-3"
 #7 bar = 5'-2"



SECTION A-A

Notes:

Pour steps monolithically with cap.
 Existing reinforcement shall be cleaned and incorporated into the new construction. Cost included with Concrete Removal.
 Any reinforcement bars that are damaged during concrete removal operations shall be repaired using an approved bar splicer or anchorage system. Cost included with Concrete Removal.
 Existing piles to remain in place. Regions of piles to be embedded in new concrete shall be blast cleaned and incorporated into the new construction. Any damage to existing piles shall be repaired as directed by the Engineer. Cost included with Concrete Removal.
 The Contractor shall cut the existing reinforcement and bars p12(E) thru p15(E) to meet the manufacturer's specifications for the mechanical bar splicers.
 For bars s6(E) and s7(E) bending diagrams, see sheet 57 of 62.

BILL OF MATERIAL

Bar	No.	Size	Length	Shape
p12(E)	8	#7	29'-1"	—
p13(E)	4	#5	28'-2"	—
p14(E)	8	#7	26'-4"	—
p15(E)	4	#5	25'-4"	—
p16(E)	4	#7	30'-7"	—
s6(E)	61	#4	10'-1"	□
s7(E)	42	#4	3'-6"	□
v1(E)	42	#5	3'-0"	—
Structure Excavation		Cu. Yd.	37	
Concrete Structures		Cu. Yd.	15.1	
Reinforcement Bars, Epoxy Coated		Pound	2,020	