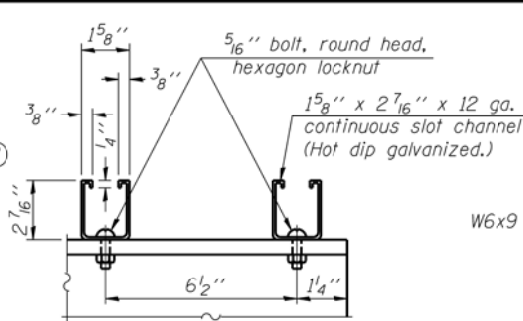
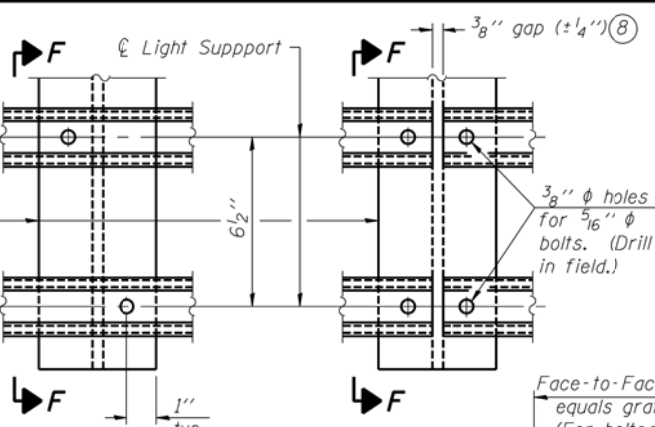


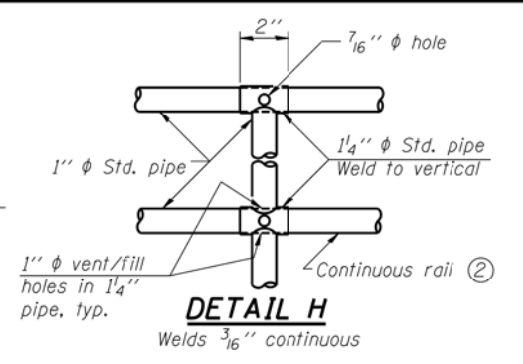
SIDE ELEVATION DETAIL D HANDRAIL FRONT ELEVATION



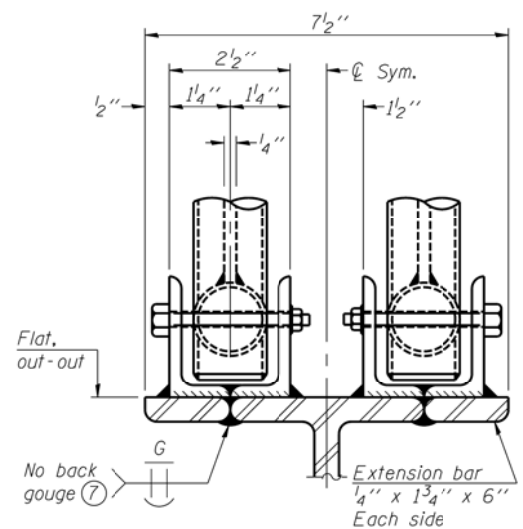
SECTION F-F LIGHTING FIXTURE MOUNTS
(If required)



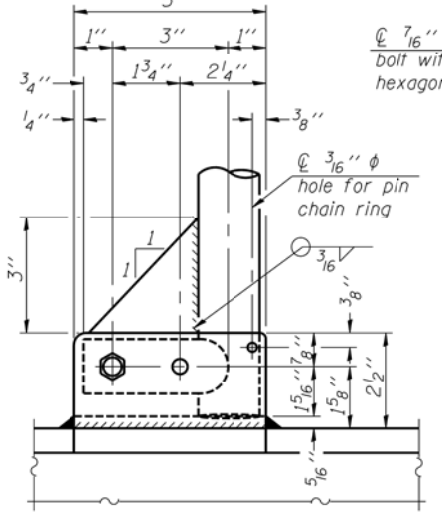
DETAIL F DETAIL G



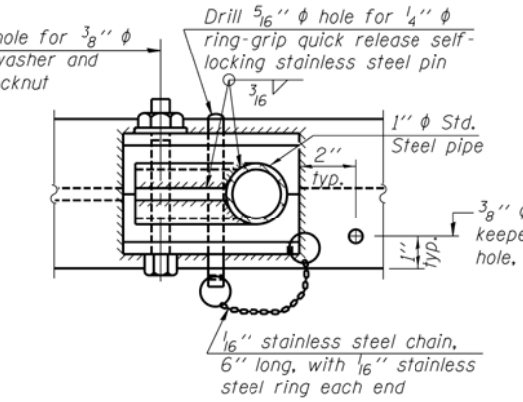
DETAIL H
Welds 3/16" continuous



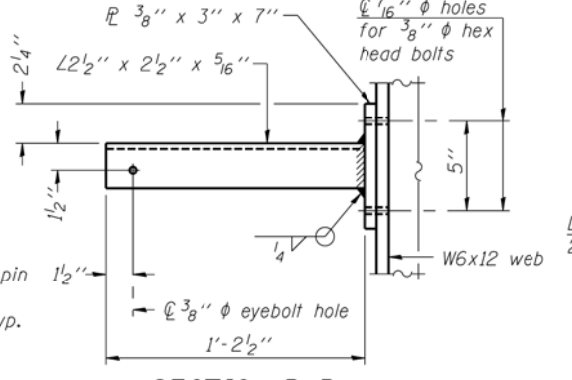
ELEVATION AT HANDRAIL JOINT
(Details not shown same as "FRONT ELEVATION")



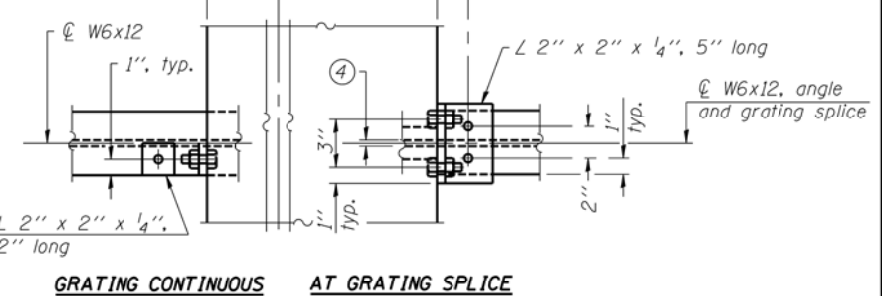
SIDE ELEVATION



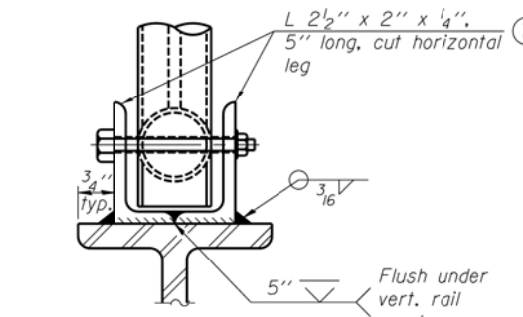
PLAN AT SINGLE HANDRAIL HINGE
DETAIL E



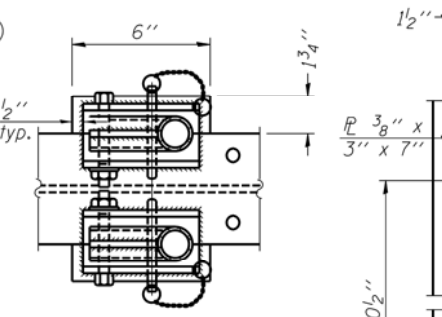
SECTION P-P



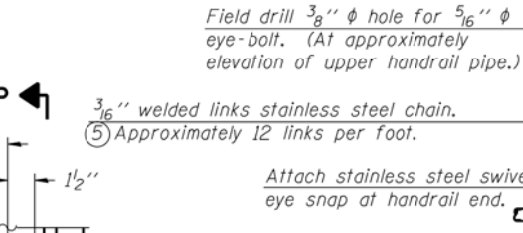
GRATING CONTINUOUS AT GRATING SPLICE



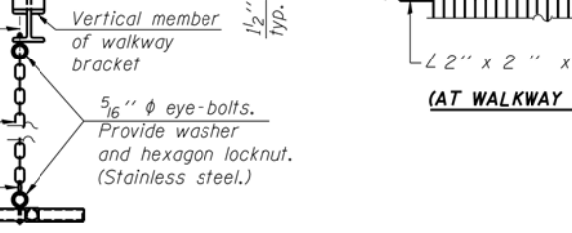
FRONT ELEVATION
(See above Elevations for dimensions.)



PLAN AT HANDRAIL JOINT
(For Details, see Elevations.)

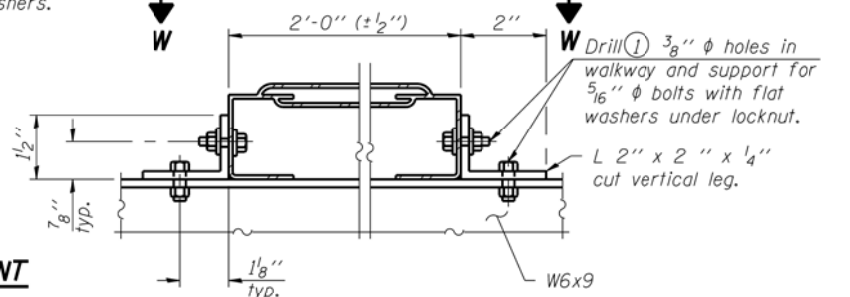


SAFETY CHAIN ATTACHMENT
(With Sign Present)
Items not shown same as "SIDE ELEVATION" and "SAFETY CHAIN"



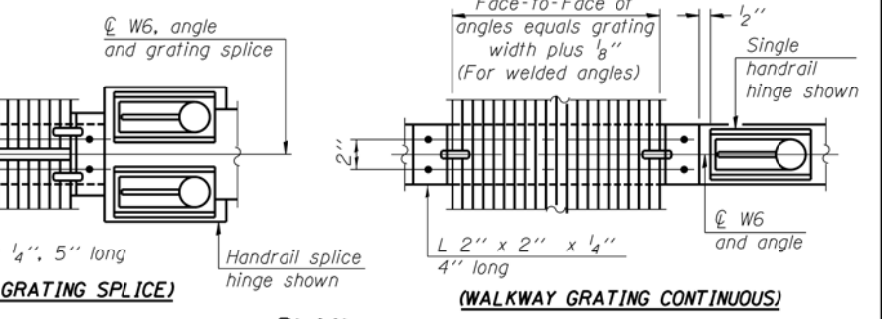
SAFETY CHAIN

Proposed Bridge Mount Sign Structure requires a walkway, however, the lights and light mounts shall be omitted.



ALTERNATE FORMED PLANK GRATING DETAILS

Plank Grating: nominal depth = 2 1/2" (± 1/2"); perforated or expanded steel sheet with a non-skid surface (non-serrated) concentrated load capacity = 500 lbs. with 6'-0" clear span.



PLAN

NOTES

- Drilling holes in grating may be done in shop or field, based on Contractor's preference and subject to accurate alignment. Field drilled holes must be touched up with galvanized paint.
- Horizontal rail member shall be continuous thru 1 1/4" pipe. Provide 7/16" hole in 1 1/4" pipe for 3/8" bolt. Field drill 7/16" hole in horizontal rail member. Provide washer and locknut for bolt. (Use 5/16" eyebolts in 7/16" holes on top rail at ends only.)
- Install standard force-fit end caps or weld 1/8" end plates with 1/8" c.f.w. and grind smooth. (All rail ends.)
- 3/8" (± 1/4") gap between grating panels at splice.
- Chain to be type 304L stainless steel suitable for prolonged exterior exposure. Approximately 3'-6" long chain per location. Maximum sag with handrail erected = 4".
- 1/8" x 1/2" x 2" welded to handrail posts to protect locations that contact grating.
- Extrusions may be used in lieu of details shown, with approval by Engineer.
- Field cut ends of light support channels shall be free of burrs or hazardous projections and coated with zinc-rich primer or equivalent.

BM-4 WELDED BAR GRATING DETAILS

1-20-11

FILE NAME = #FILE#	USER NAME = keathbr	DESIGNED K.A. KLUES	REVISED -	STATE OF ILLINOIS DEPARTMENT OF TRANSPORTATION	BRIDGE MOUNT SIGN STRUCTURES WALKWAY DETAILS	F.A.I. R.T.E. 474	SECTION (72-3HB-1), I	COUNTY PEORIA	TOTAL SHEETS 89	SHEET NO. 84	
		CHECKED E.M. LAGEMANN	REVISED -			CONTRACT NO. 68883					
		DRAWN K.A. KLUES	REVISED -			ILLINOIS FED. AID PROJECT					
		CHECKED E.M. LAGEMANN	REVISED -			SHEET NO. 4 OF 4 SHEETS					