

SAMUEL OLSON

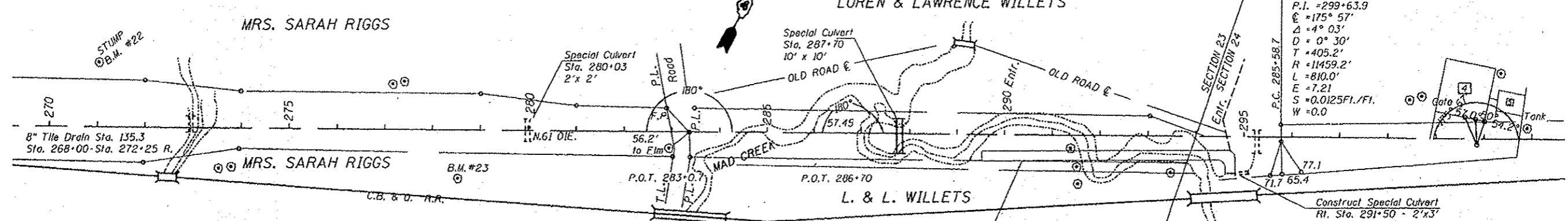
The embankment of Rt. Sta. 291+20 to Rt. Sta. 294+00 shall be puddled as provided for in the Special Provisions and shown on a detail sheet in these plans

LOREN & LAWRENCE WILLETS

MRS. SARAH RIGGS

MRS. SARAH RIGGS

L. & L. WILLETS



Computed Quantities for Entrance Approaches		
Entrance Location	Cut/Fill	Excluded in Balance Dirt
Rt. Sta. 283+12	359	Sta. 209+07 to 286+70
Lt. Sta. 298+50	0	Sta. 200+58 to 303+15

Standard Grading Section  
32' Roadway  
Sta. 272+65 to 266+50

Concrete Gutter - Type "C"  
Standard No. 1354  
18' Pvm. 30' Road  
Sta. 293+50 - 298+25  
Sta. 272+65 - 279+50

Special Ditch  
Lt. Sta. 284+00 to 286+00  
See "X" Sections

Special Ditch  
Lt. Sta. 290+50 to 291+40  
See "X" Sections

Outlet for Concrete Gutter - Type "C"					
Type	Location	Cu.Yds. Class "X" Conc.	6" Cor. Iron Pipe	Grates	
#1	Rt. & Lt. 270+50	1.4	Rt. 18" - Lt. 18"	2	
Std.	Rt. 293+50	2.0	Build-out to Slope Wall in place		
Std.	Lt. 293+50	1.9			

Concrete Gutter - Type "B"  
Standard No. 1339  
18' Pvm. 30' Road  
Sta. 298+75 - 304+40

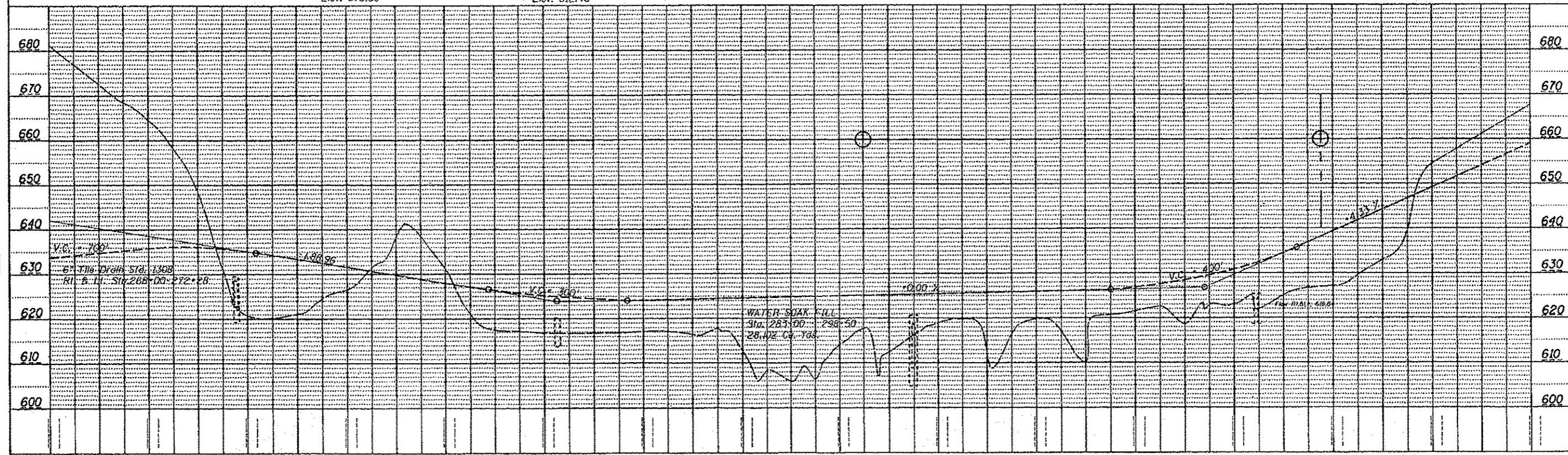
Outlet & Inlet for Concrete Gutter - Type "B"			
Item	Location	Cu.Yds. Class "X" Conc.	
Gutter Entrance	Lt. Sta. 298+60	11.2	1.0

Standard Grading Section  
30' Roadway  
Sta. 298+50 to 304+60

B.M. #22  
New in Stump  
125' Lt. Sta. 271+00  
Elev. 676.50

B.M. #23  
S & W in 30' Oak  
Rt. Sta. 278+50  
Elev. 612.48

B.M. #24  
R.R.S. horizon T.P.  
Rt. Sta. 288+26  
Elev. 633.35



FILE NAME D:\CEN\DRM\1\ST01\PLN\60A29.dwg	USER NAME jonesco	DESIGNED ---	REVISED ---	<p align="center"><b>STATE OF ILLINOIS</b> <b>DEPARTMENT OF TRANSPORTATION</b></p>	<p align="center"><b>PLAN AND PROFILE</b> <b>CULVERT NO. 066S17m05.160</b></p>	<table border="1"> <tr> <th>F.A. RTE.</th> <th>SECTION</th> <th>COUNTY</th> <th>TOTAL SHEETS</th> <th>SHEET NO.</th> </tr> <tr> <td>639</td> <td>12311</td> <td>MERCER</td> <td>14</td> <td>6</td> </tr> </table>	F.A. RTE.	SECTION	COUNTY	TOTAL SHEETS	SHEET NO.	639	12311	MERCER	14	6
F.A. RTE.	SECTION	COUNTY	TOTAL SHEETS				SHEET NO.									
639	12311	MERCER	14				6									
Default	PLOT SCALE = 1/8" = 1' @ 11"	CHECKED ---	REVISED ---													
	PLOT DATE = 7/17/2012	DATE ---	REVISED ---													
SCALE: _____		SHEET _____ OF _____ SHEETS		STA. _____ TO STA. _____		CONTRACT MAINTENANCE REPAIR ILLINOIS FED. AID PROJECT										