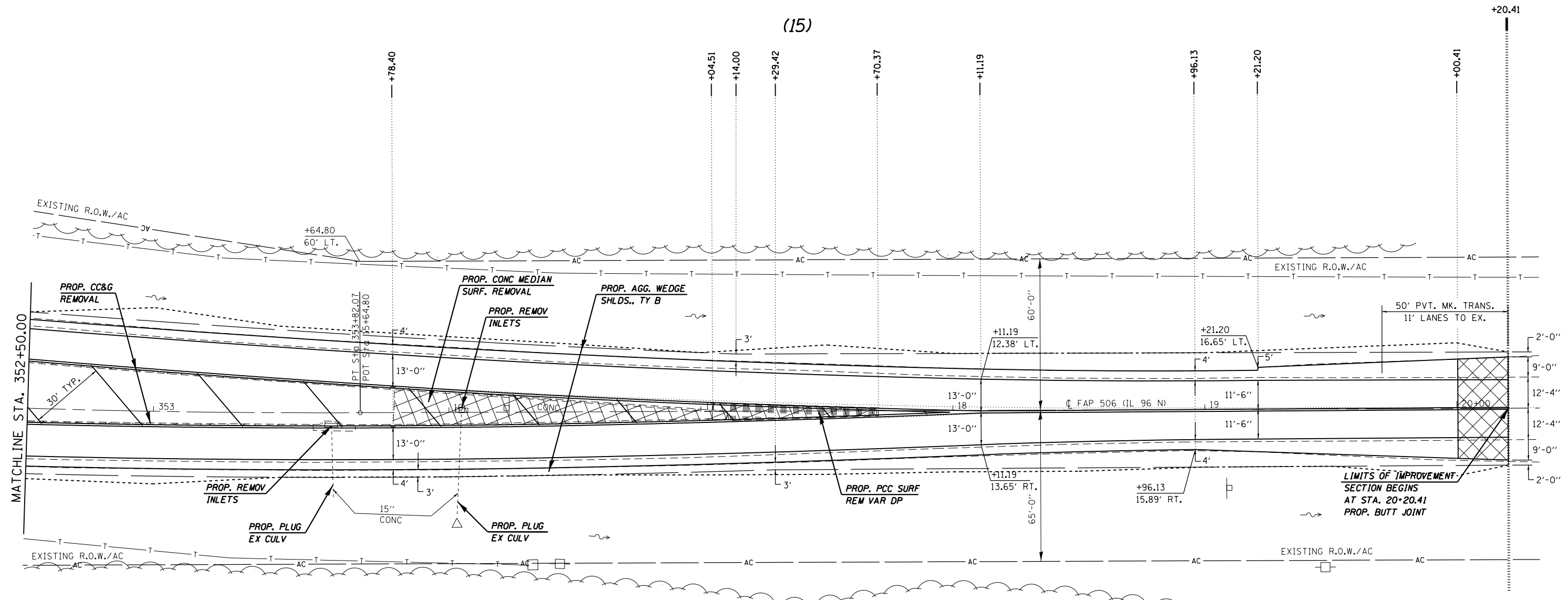
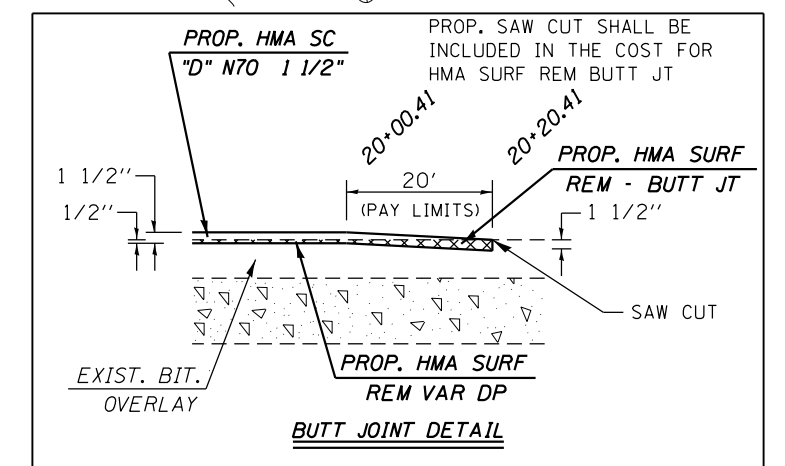




(15)



EXIST. CURVE 637
 PI STA. = 345+97.36
 $\Delta = 23^\circ 54' 24''$ (LT)
 $D = 1^\circ 30' 03''$
 $R = 3,817.71'$
 $T = 808.23'$
 $L = 1,592.94'$
 $E = 84.62'$
 $e = 3.7\%$
 $T.R. = 42'$
 S.E. RUN = 103'
 P.C. STA. = 337+89.13
 P.T. STA. = 353+82.07



FILE NAME =	USER NAME = sparksgw	DESIGNED -	REVISED -
ci:\pw\work\p\dot\sparksgw\10259630\PLA\eng.dgn		DRAWN -	REVISED -
Default	PLOT SCALE = 40.0000' / in.	CHECKED -	REVISED -
	PLOT DATE = Dec-14-2012 03:45:31PM	DATE -	REVISED -

STATE OF ILLINOIS
 DEPARTMENT OF TRANSPORTATION

PLAN SHEET

SCALE: 20 SHEET 25 OF 29 SHEETS STA. 352+50.00 TO STA. 20+20.41

• FAP 63 (US 24); FAP 63 (US 24/IL 96); FAP 506 (IL 96)			
F.A.P. RTE.	SECTION	COUNTY	TOTAL SHEETS
	(1)N,TS-2RS-5&(7B)RS-3	ADAMS	194
			SHEET NO. 79
			CONTRACT NO. 72E31
ILLINOIS FED. AID PROJECT			