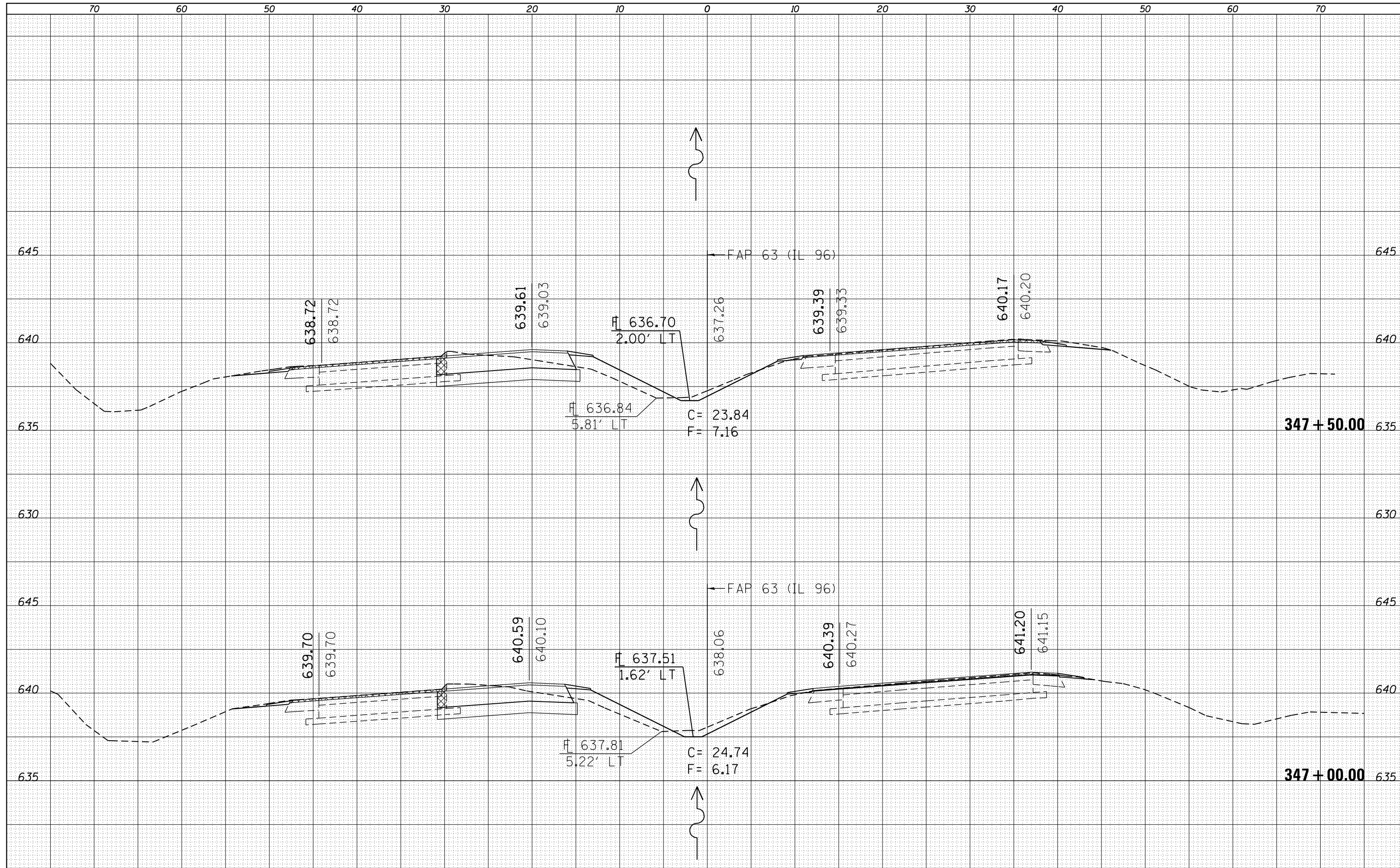


| | |
|--------------|----------|
| DATE | |
| BY | |
| FINAL SURVEY | SURVEYED |
| NOTE BOOK | PLOTTED |
| NO. | TEMPLATE |
| | AREAS |
| | CHECKED |

| | |
|-----------------|----------|
| DATE | |
| BY | |
| ORIGINAL SURVEY | SURVEYED |
| NOTE BOOK | PLOTTED |
| NO. | TEMPLATE |
| | AREAS |
| | CHECKED |



FILE NAME =
 c:\pw\work\p1dot\sparksgw\d0259630\0672E31-sh

USER NAME = sparksgw
 IL96(50).dgn
 PLOT SCALE = 10.0000' / in.
 PLOT DATE = Dec-14-2012 03:46:49PM

DESIGNED -
 DRAWN -
 CHECKED -
 DATE -

REVISED -
 REVISED -
 REVISED -
 REVISED -

**STATE OF ILLINOIS
 DEPARTMENT OF TRANSPORTATION**

CROSS SECTIONS
 SCALE: SHEET 42 OF 52 SHEETS STA. 347+00.00 TO STA. 347+50.00

| F.A.P. RTE. | SECTION | COUNTY | TOTAL SHEETS | SHEET NO. |
|--------------------|------------------------|--------|---------------------------|-----------|
| • | (1)N,TS-2RS-5&(78)RS-3 | ADAMS | 194 | 184 |
| CONTRACT NO. 72E31 | | | ILLINOIS FED. AID PROJECT | |

• FAP 63 (US 24); FAP 63 (US 24/IL 96); FAP 506 (IL 96)