

STATE OF ILLINOIS  
DEPARTMENT OF TRANSPORTATION  
DIVISION OF HIGHWAYS

**PROPOSED  
HIGHWAY PLANS**

FAP ROUTE 502 (IL 57)  
SECTION (53) N-1  
PROJECT F-0502(015)  
INTERSECTION IMPROVEMENTS  
ADAMS COUNTY

C-96-063-12

FOR INDEX OF SHEETS, AND HIGHWAY STANDARDS SEE SHEET NO. 2

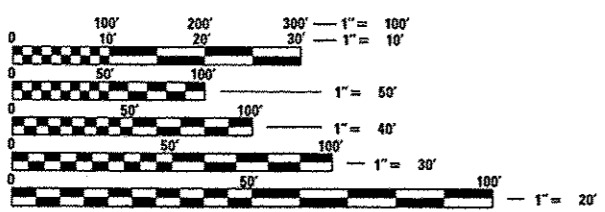
F.A.P. RTE.	SECTION	COUNTY	TOTAL SHEETS	SHEET NO.
502	(53) N-1	ADAMS	20	1
FED. ROAD DIST. NO. 6		ILLINOIS	CONTRACT NO. 72F46	

D-96-063-12



LOCATION OF SECTION INDICATED THUS: —

DESIGN DESIGNATION:  
FAP 502  
OTHER PRINCIPAL ARTERIAL (URBAN)  
ADT = 5100 (2012) 6100 (2032)  
%SU = 8  
%MU = 12

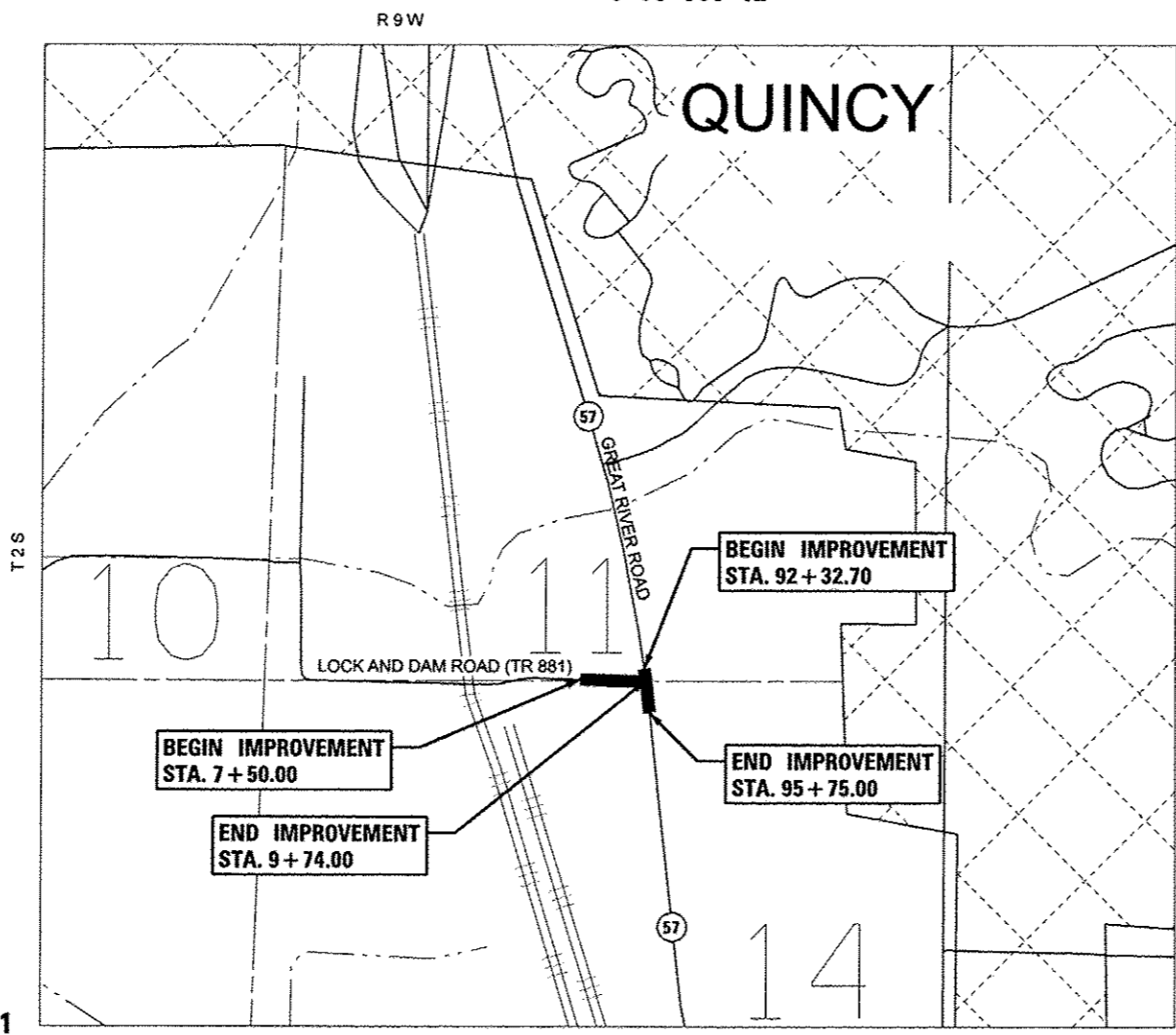


FULL SIZE PLANS HAVE BEEN PREPARED USING STANDARD ENGINEERING SCALES. REDUCED SIZED PLANS WILL NOT CONFORM TO STANDARD SCALES. IN MAKING MEASUREMENTS ON REDUCED PLANS, THE ABOVE SCALES MAY BE USED.

J.U.L.I.E.  
JOINT UTILITY LOCATION INFORMATION FOR EXCAVATION  
1-800-892-0123  
OR 811

PROJECT ENGINEER: JEFF MYERS (217) 782-4761  
PROJECT MANAGER: ED KERN (217) 524-7547

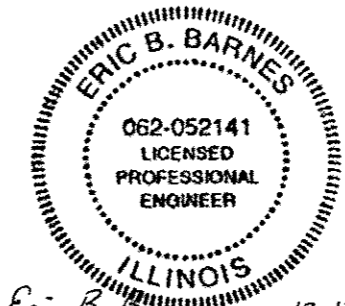
CONTRACT NO. 72F46



LOCATION MAP

SCALE: 1" = 500'

GROSS/NET LENGTH IL 57 SECTION = 342.3 FT = 0.065 MILES  
GROSS/NET LENGTH LOCK & DAM ROAD SECTION = 224.00 FT = 0.042 MILES  
TOTAL LENGTH = 566.3 FT = 0.107 MILES



*Eric B. Barnes* 12-12-12  
ERIC B. BARNES DATE  
REGISTERED PROFESSIONAL ENGINEER  
STATE OF ILLINOIS NO. 062-052141  
LICENSE EXPIRES NOVEMBER 30, 2013

STATE OF ILLINOIS  
DEPARTMENT OF TRANSPORTATION  
DIVISION OF HIGHWAYS

SUBMITTED Dec. 14 20 12  
Roger D. Dill  
DEPUTY DIRECTOR OF HIGHWAYS, REGION ENGINEER

Feb 1 20 13  
John D. Baramelli PE/br  
ENGINEER OF DESIGN AND ENVIRONMENT

Feb 1 20 13  
Omer Osman, P.E./br  
DIRECTOR OF HIGHWAYS, CHIEF ENGINEER

PLANS PREPARED BY:  
**KLINGNER & ASSOCIATES, P.C.**  
Engineers • Architects • Surveyors

605 North 24th Street, Quincy, IL 62450  
4528 Paris Gravel Road, Normal, IL 62450  
1118 N. 14th Street, Suite 100, Burlington, IL 62018  
911 North Prairie Street, Salsburg, IL 62455  
Ph: (217) 223-3679 • Fax: (217) 223-3683  
Ph: (618) 223-8828 • Fax: (618) 223-8812  
Ph: (618) 753-3636 • Fax: (618) 753-3645  
Ph: (618) 342-6812 • Fax: (618) 342-3738  
Internet Address: www.klingner.com

STATE OF ILLINOIS DESIGN FIRM # 1842738

**PRINTED BY THE AUTHORITY  
OF THE STATE OF ILLINOIS**