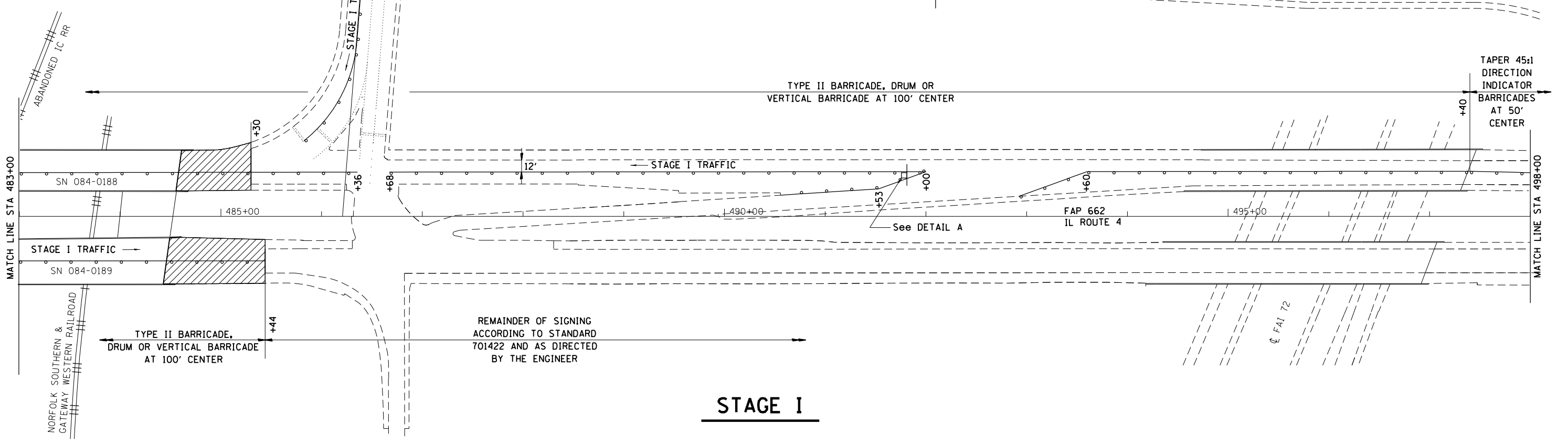
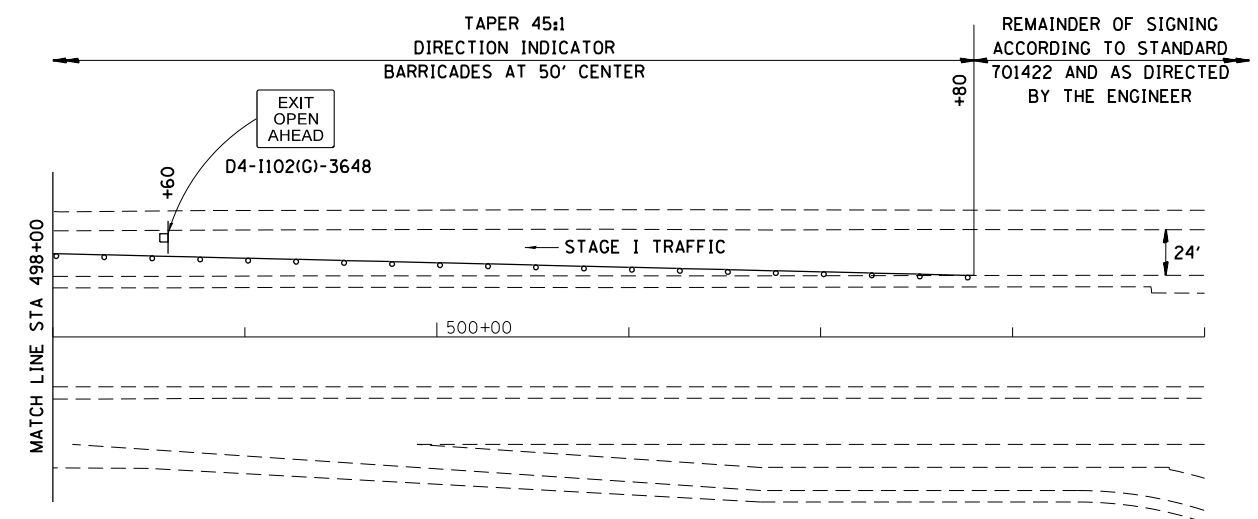


Background - Green
 Border and legend - White
 "D" size letters

EXIT SIGN - SPECIAL

DETAIL A
 (To be utilized where distance between the two rows of channelizing devices is 6' (1.8 m) in width.)



STAGE I

| | | | |
|--|------------------------------------|------------|-----------|
| FILE NAME = | USER NAME = sparksgw | DESIGNED - | REVISED - |
| c:\pwwork\pwwork\sparksgw\10323437\06xxx-sh1-details.dgn | | DRAWN - | REVISED - |
| Default | PLOT SCALE = 100.0000' / 1" = | CHECKED - | REVISED - |
| | PLOT DATE = Dec-20-2012 02:41:54PM | DATE - | REVISED - |

**STATE OF ILLINOIS
 DEPARTMENT OF TRANSPORTATION**

| | | | |
|-------------------------------|-------|-----------|--------------|
| MAINTENANCE OF TRAFFIC | | | |
| SCALE: | SHEET | OF SHEETS | STA. TO STA. |

| | | | | |
|---------------------------|---------|----------|--------------|-----------|
| F.A.P. RTE. | SECTION | COUNTY | TOTAL SHEETS | SHEET NO. |
| 662 | (3)1-13 | SANGAMON | 13 | 8 |
| CONTRACT NO. 72F86 | | | | |
| ILLINOIS FED. AID PROJECT | | | | |