

STATE OF ILLINOIS
DEPARTMENT OF TRANSPORTATION
DIVISION OF HIGHWAYS

**PROPOSED
HIGHWAY PLANS**

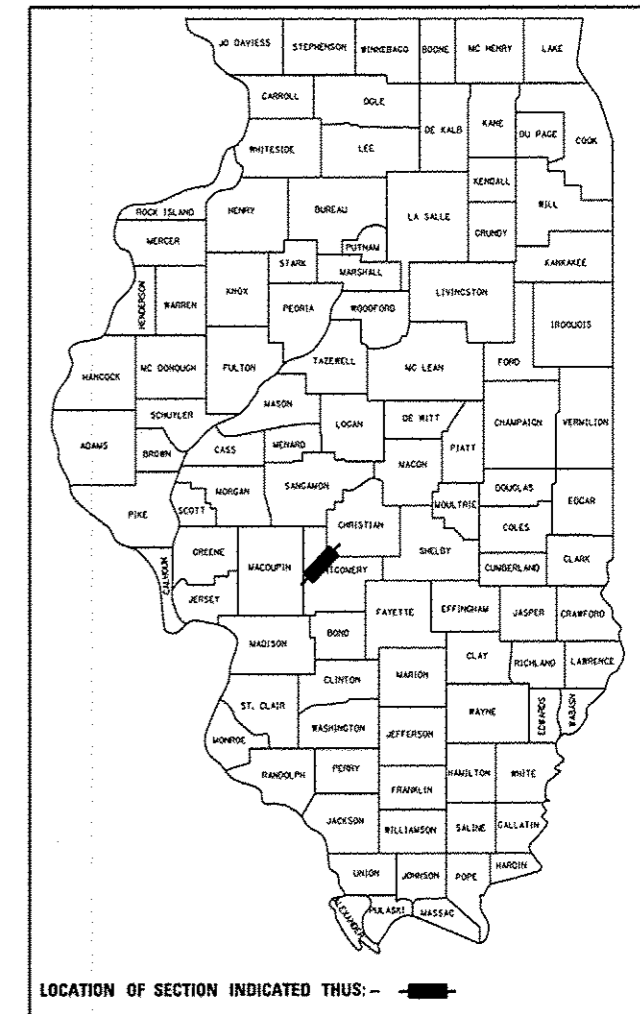
FAP ROUTE 42 & 714 (IL48 & IL127)
SECTION (101 & 137)N

INTERSECTION IMPROVEMENT
MONTGOMERY COUNTY

F.A.B. RTE.	SECTION	COUNTY	TOTAL SHEETS	SHEET NO.
**	(101 & 137)N	MONTGOMERY	8	1
ILLINOIS			CONTRACT NO. 72F88	

** 42 & 714

D-96-021-13

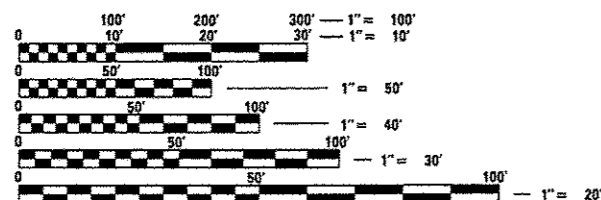


INDEX OF SHEETS

- 1 COVER
- 2 GENERAL NOTES
- 3 SUMMARY OF QUANTITIES
- 4 SCHEDULE OF QUANTITIES
- 5 TYPICAL SECTION
- 6 PLAN SHEET
- 7 PAVEMENT MARKING PLAN SHEET
- 8 BUTT JOINT DETAIL SHEET

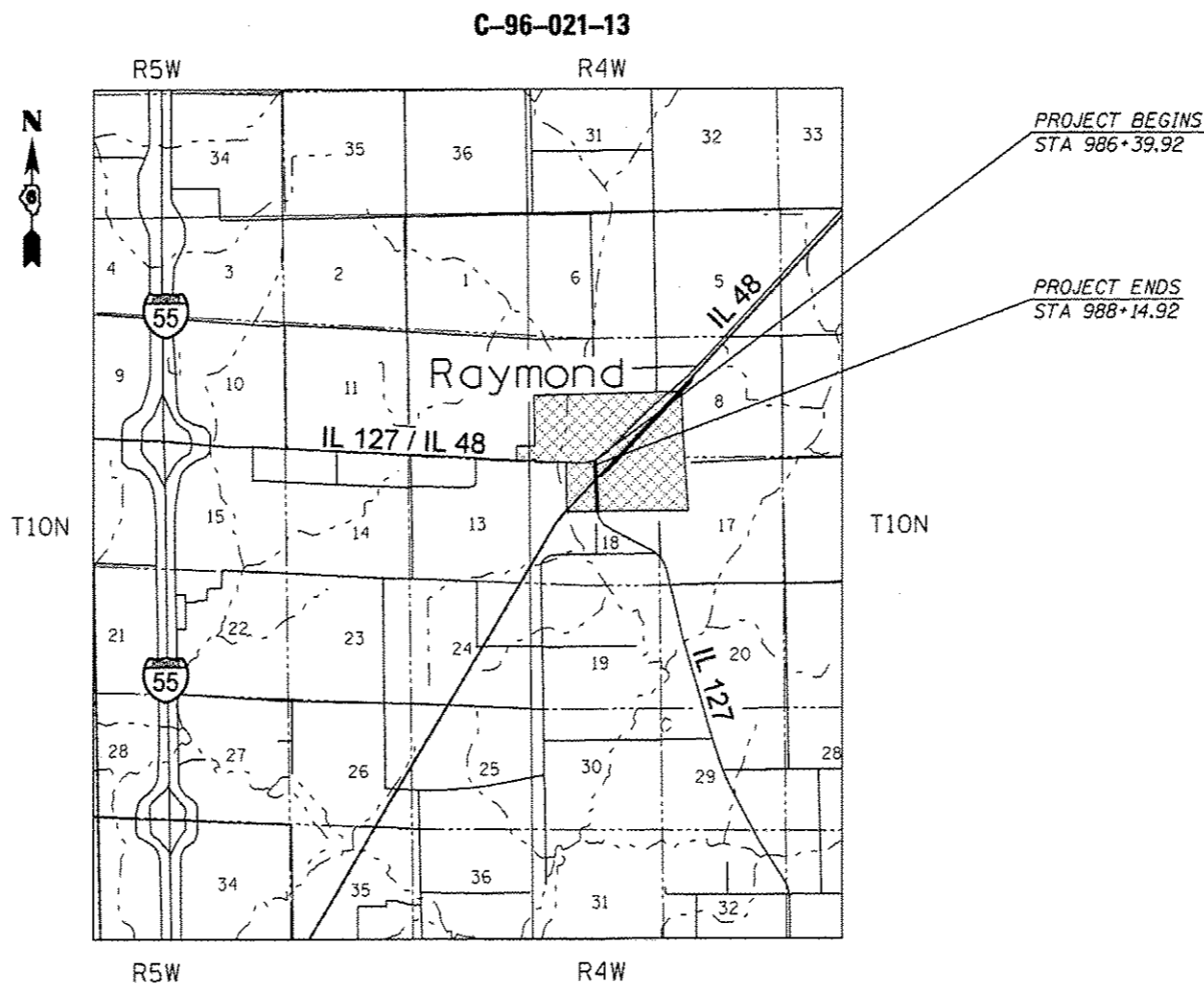
STANDARDS

000001-06	701311-03
701001-02	701501-06
701006-04	701901-02
701011-03	780001-03
701301-04	



FULL SIZE PLANS HAVE BEEN PREPARED USING STANDARD ENGINEERING SCALES. REDUCED SIZED PLANS WILL NOT CONFORM TO STANDARD SCALES. IN MAKING MEASUREMENTS ON REDUCED PLANS, THE ABOVE SCALES MAY BE USED.

J.U.L.I.E.
JOINT UTILITY LOCATION INFORMATION FOR EXCAVATION
1-800-892-0123
OR 811



GROSS LENGTH = 175.00 FT. = 0.033 MILE
NET LENGTH = 175.00 FT. = 0.033 MILE

ADT = 3,500 (2011)
PV = 84.43%
SU = 12.14%
MU = 3.43%

STATE OF ILLINOIS
DEPARTMENT OF TRANSPORTATION
DIVISION OF HIGHWAYS

SUBMITTED December 19, 2012
Page 2 of 2
DEPUTY DIRECTOR OF HIGHWAYS, REGION ENGINEER

Feb 1, 2013
John D. Baranzolo, P.E.
ENGINEER OF DESIGN AND ENVIRONMENT

Feb 1, 2013
Omer Osman, P.E.
DIRECTOR OF HIGHWAYS, CHIEF ENGINEER

**PRINTED BY THE AUTHORITY
OF THE STATE OF ILLINOIS**

PROJECT ENGINEER: JEFF MYERS (217) 782-4761

TEAM MANAGER: TOM COX (217) 524-7940

CONTRACT NO. 72F88