

STATE OF ILLINOIS  
DEPARTMENT OF TRANSPORTATION  
DIVISION OF HIGHWAYS

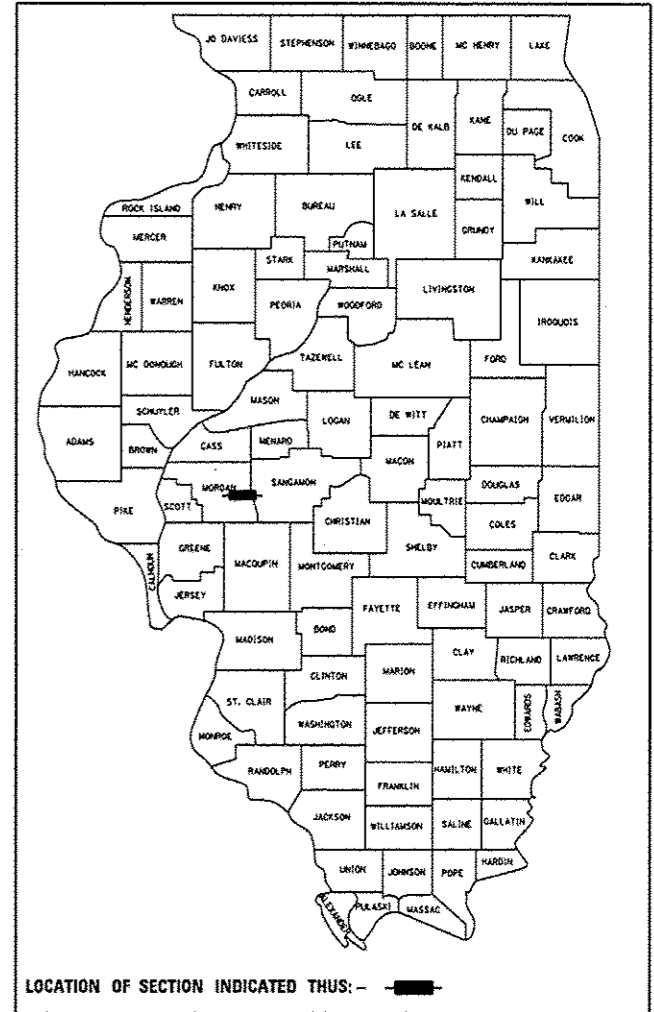
**PROPOSED  
HIGHWAY PLANS**

FAI ROUTE 72 (I-72)  
SECTION (69-9) I-4

RESURFACING  
MORGAN COUNTY

F.A. RTE.	SECTION	COUNTY	TOTAL SHEETS	SHEET NO.
72	(69-9) I-4	Morgan	6	1
ILLINOIS CONTRACT NO. 72F89				

D-96-022-13

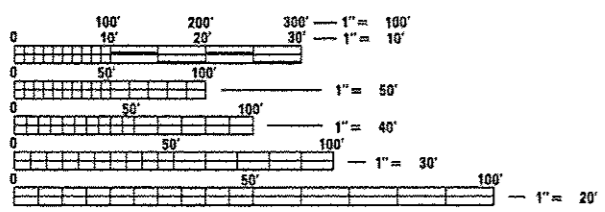
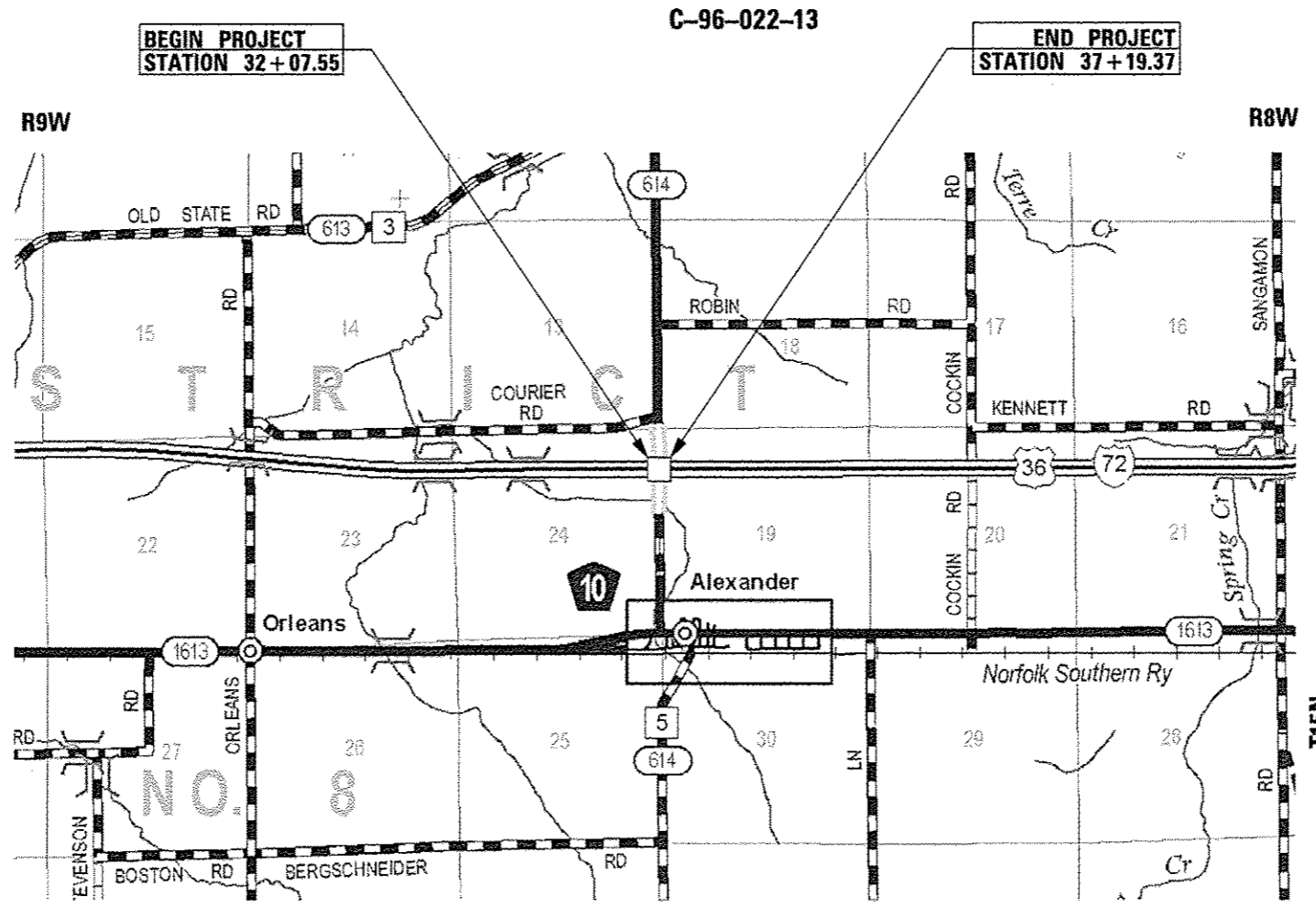


LOCATION OF SECTION INDICATED THUS: —

**FUNCTIONAL CLASSIFICATION**  
**INTERSTATE**  
2011 ADT = 12400  
PV = 82.3% SU = 3.2% MU = 14.5%

**INDEX OF SHEETS**

SHEET NO.	DESCRIPTION
1.	COVER SHEET
2.	GENERAL NOTES
3-4.	SUMMARY OF QUANTITIES
5.	TYPICAL SECTION SHEETS
6.	PLAN SHEETS



FULL SIZE PLANS HAVE BEEN PREPARED USING STANDARD ENGINEERING SCALES. REDUCED SIZED PLANS WILL NOT CONFORM TO STANDARD SCALES. IN MAKING MEASUREMENTS ON REDUCED PLANS, THE ABOVE SCALES MAY BE USED.

J.U.L.I.E.  
JOINT UTILITY LOCATION INFORMATION FOR EXCAVATION  
1-800-892-0123  
OR 811

SENOIR TEAM ENGINEER: VINCE MADONIA (217) 785-9046  
TEAM ENGINEER: VICTOR YOUNG (217) 524-0472

GROSS LENGTH = 511.82 FT. = 0.096 MILE  
NET LENGTH = 511.82 FT. = 0.096 MILE

CONTRACT NO. 72F89

STATE OF ILLINOIS  
DEPARTMENT OF TRANSPORTATION  
DIVISION OF HIGHWAYS

SUBMITTED Dec 20 20 12  
Ray D. Parker  
DEPUTY DIRECTOR OF HIGHWAYS, REGION ENGINEER

Feb 1 20 13  
John D. Baramelli, P.E.  
ENGINEER OF DESIGN AND ENVIRONMENT

Feb 1 20 13  
Omer Osman, P.E.  
DIRECTOR OF HIGHWAYS, CHIEF ENGINEER

**PRINTED BY THE AUTHORITY  
OF THE STATE OF ILLINOIS**

# LIST OF HIGHWAY STANDARDS

0000001-06	STANDARD SYMBOLS, ABBREVIATIONS AND PATTERNS
001001-02	AREAS OF REINFORCEMENT BARS
001006	DECIMAL OF AN INCH AND OF A FOOT
642001-02	SHOULDER RUMBLE STRIPS, 16 INCH
701400-06	APPROACH TO LANE CLOSURE, FREEWAY/EXPRESSWAY
701401-07	LANE CLOSURE, FREEWAY/EXPRESSWAY
701406-06	LANE CLOSURE, FREEWAY/EXPRESSWAY, DAY OPERATIONS ONLY
701901-02	TRAFFIC CONTROL DEVICES
780001-03	TYPICAL PAVEMENT MARKINGS
781001-03	TYPICAL APPLICATIONS RAISED REFLECTIVE PAVEMENT MARKERS
701411-08	LANE CLOSURE, MULTILANE, AT ENTRANCE OR EXIT RAMP, FOR SPEEDS ≥ 45 MPH

# GENERAL NOTES

1. ANY REFERENCE TO STANDARDS THROUGHOUT THE PLANS SHALL BE INTERPRETED TO BE THE LATEST STANDARDS OF THE DEPARTMENT AS SHOWN IN THE PLANS.
2. THE THICKNESS OF THE HMA MIXTURE SHOWN ON THE PLANS IS THE NOMINAL THICKNESS. DEVIATIONS FROM THE NOMINAL THICKNESS WILL BE PERMITTED WHEN SUCH DEVIATIONS OCCUR DUE TO IRREGULARITIES IN THE EXISTING SURFACE OR BASE ON WHICH THE HMA MIXTURE IS PLACE.
3. "ROAD CONSTRUCTION AHEAD" SIGNS SHALL BE PLACED AT THE BEGINNING AND END OF THE MAINLINE CONSTRUCTION SECTIONS AND THE CROSSOVER SIDE ROAD CONSTRUCTION LIMITS, AS DIRECTED BY THE RESIDENT ENGINEER. ALL CNSTRUCTION SIGNS SHALL BE FLOURESCENT ORANGE, 48". THIS SHALL BE INCLUDED IN THE COST OF THE TRAFFIC CONTROL AND PROTECTION.

### 4. THE FOLLOWING MIXTURE REQUIREMENTS RE APPLICABLE FOR THIS PROJECT:

LOCATION	I-72
MIXTURE USE(S):	POLYMER HMA SURFACE
AC/PG:	SBS-PG 70-22
DESIGN AIR VOIDS:	4.0% @ NDESIGN = 90
MIXTURE COMPOSITION: (GRADATION MIXTURE)	IL-9.5
FRICTION AGGREGATE:	MIX "D"

### 5. THE ENGINEER WILL BE THE SOLE JUDGE CONCERNING CURING TIME FOR THE VARIOUS HMA LIFTS.

### 6. THE CONTRACTOR SHALL NOTIFY THE DISTRICT & BUREAU OF OPERATIONS AT (217) 785-5312 THREE WEEKS PRIOR TO IMPLEMENTING ANY TRAFFIC CONTROL.

### 7. ENGLISH UNITS OF MEASUREMENT SHALL GOVERN OVER AND SUPERSEDE ANY METRIC UNITS SHOWN IN THIS CONTRACT. WHERE INCLUDED, METRIC UNITS ARE FOR INFORMATION ONLY.

### 8. ALL TEMPORARY PAVEMENT MARKING WILL BE PLACED IN SUCH A MANNER SO AS NOT TO INTERFERE WITH THE PLACEMENT OF PERMANENT PAVEMENT MARKINGS.

### 9. THE CONTRACTOR SHALL BE AWARE THAT EXISTING CONCRETE PATCHES SHALL BE MILLED AS PART OF THE PROPOSED HMA SURFACE REMOVAL AND NO ADDITIONAL COMPENSATION WILL BE ALLOWED FOR THE MILLING OF THE CONCRETE.

### 10. THE FOLLOWING RATES OF APPLICATION HAVE BEEN USED IN CALCULATING PLAN QUANTITIES:

GRANULAR MATERIALS	2.05	TONS / CU YD
BITUMINOUS MAT PRIME COAT	0.00038	TON / SQ YD (PAVEMENT) OR
	0.001425	TON / SQ YD (AGG. SURFACE)
AGGREGATE PRIME COAT	0.002	TONS / SQ YD
HMA RESURFACING	112	LBS / SQ YD / IN
SHORT TERM PAVEMENT MARKING	4	FT / 40 FT OF APPLICATION

### 11. THE CONTRACTOR AND THE ENGINEER SHALL BE AWARE THAT NO SURVEY WAS PERFORMED FOR THIS PROJECT. THE STATIONING AND TOPO SHOWN IN THE PLANS WERE CREATED USING MICROFILM AND FIELD MEASUREMENTS MADE BY DESIGN PERSONNEL. BOTH SHOULD BE CONSIDERED APPROXIMATE.

### 12. THE CONTRACTOR WILL BE REQUIRED TO REPAIR THOSE AREAS THAT ARE DAMAGED AS A PART OF THE EXECUTION OF THIS CONTRACT OR AS OTHERWISE DIRECTED BY THE ENGINEER. THIS WORK WILL NOT BE MEASURED FOR PAYMENT. THE COST OF SEEDING, FERTILIZING AND MULCHING AREAS OF THE TURF THAT ARE DAMAGED, WILL BE CONSIDERED INCLUDED IN THE COST OF THE VARIOUS WORK ITEMS RELATED TO THE OPERATIONS CAUSING THE DAMAGE.

# COMMITMENTS

1. THE FIELD/RESIDENT ENGINEER SHALL CONTACT STUDIES & PLANS CONCERNING ANY MAJOR PLAN CHANGES TO MAKE SURE NO PREVIOUS COMMITMENTS (NOT LISTED) WERE MADE AFFECTING THE DESIGN AND TO ALLOW IMPROVEMENT IN THE DESIGN FOR FUTURE PROJECTS.

DISTRICT SIX	
EXAMINED <u>12/18</u>	20 <u>12</u>
<i>William M. Ryan</i>	
OPERATIONS ENGINEER	
EXAMINED <u>DEC 18</u>	20 <u>12</u>
<i>Jimmy F. [Signature]</i>	
PROJECT IMPLEMENTATION ENGINEER	
EXAMINED <u>Dec. 20</u>	20 <u>12</u>
<i>ARM [Signature]</i>	
PROGRAM DEVELOPMENT ENGINEER	

CODE NO.	ITEM	UNIT	TOTAL QUANTITY	CONSTR. CODE
				100% STATE ROADWAY
				0005
40600200	BITUMINOUS MATERIALS (PRIME COAT)	TON	1	1
40600300	AGGREGATE (PRIME COAT)	TON	4	4
40600982	HOT-MIX ASPHALT SURFACE REMOVAL - BUTT JOINT	SO YD	107	107
40600990	TEMPORARY RAMP	SO YD	53	53
40603545	POLYMERIZED HOT-MIX ASPHALT SURFACE COURSE, MIX "D", N90	TON	230	230
67100100	MOBILIZATION	L SUM	1	1
70100420	TRAFFIC CONTROL AND PROTECTION, STANDARD 701411	EACH	2	2
70100700	TRAFFIC CONTROL AND PROTECTION, STANDARD 701406	L SUM	1	1
70100800	TRAFFIC CONTROL AND PROTECTION, STANDARD 701401	L SUM	1	1
70300100	SHORT TERM PAVEMENT MARKING	FOOT	93	93
70301000	WORK ZONE PAVEMENT MARKING REMOVAL	SO FT	20	20
* 78004220	PREFORMED PLASTIC PAVEMENT MARKING, TYPE B - INLAID - LINE 5"	FOOT	256	256
* 78009005	MODIFIED URETHANE PAVEMENT MARKING - LINE 5"	FOOT	2048	2048
* 78100100	RAISED REFLECTIVE PAVEMENT MARKER	EACH	16	16

\* SPECIALTY ITEM

FILE NAME : c:\pwwork\pwwork\sparkag\00325513\067209.sht-500.dgn	USER NAME : sparkag	DESIGNED -	REVISED -	<b>STATE OF ILLINOIS DEPARTMENT OF TRANSPORTATION</b>	<b>Summary of Quantities</b>				F.A. RTE.	SECTION	COUNTY	TOTAL SHEETS	SHEET NO.		
Default	PLOT SCALE : 100.0000' / 1"	DRAWN -	REVISED -		SCALE:	SHEET 3	OF 6	SHEETS	STA.	TO STA.	72	(69-9) I-4	MORGAN	6	3
	PLOT DATE : Dec-28-2012 11:00:29AM	CHECKED -	REVISED -		CONTRACT NO. 72F89										
		DATE -	REVISED -		ILLINOIS FED. AID PROJECT										

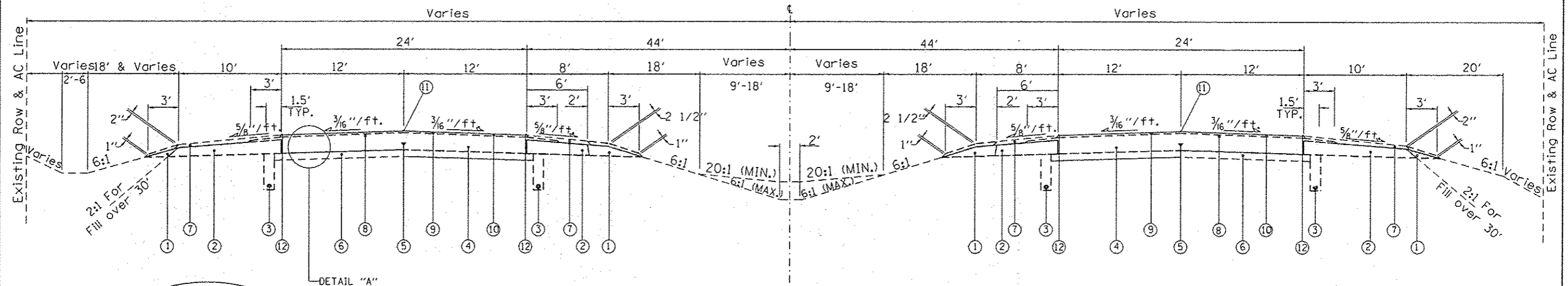
CODE NO.	ITEM	UNIT	TOTAL QUANTITY	CONSTR. CODE
				100% STATE ROADWAY 0005
78300200	RAISED REFLECTIVE PAVEMENT MARKER REMOVAL	EACH	16	16
X4401198	HOT-MIX ASPHALT SURFACE REMOVAL, VARIABLE DEPTH	SO YD	2730	2730

2

FILE NAME *	USER NAME * sparkgs	DESIGNED -	REVISED -	<b>STATE OF ILLINOIS DEPARTMENT OF TRANSPORTATION</b>	<b>Summary of Quantities</b>				F.A. RTE.	SECTION	COUNTY	TOTAL SHEETS	SHEET NO.
c:\pwwork\pwwork\sparkgs\0325513\067	F89-shl-500.dgn	DRAWN -	REVISED -						72	69-91 I-4	MORGAN	6	4
Default	PLOT SCALE * 100.0000 1/16"	CHECKED -	REVISED -		SCALE: SHEET 4 OF 6 SHEETS STA. TO STA.				CONTRACT NO. 72F89				
	PLOT DATE * Dec-20-2012 11:00:29AM	DATE -	REVISED -		[ILLINOIS] FED. AID PROJECT								

FAI RTE 72 - WESTBOUND

FAI RTE 72 - EASTBOUND



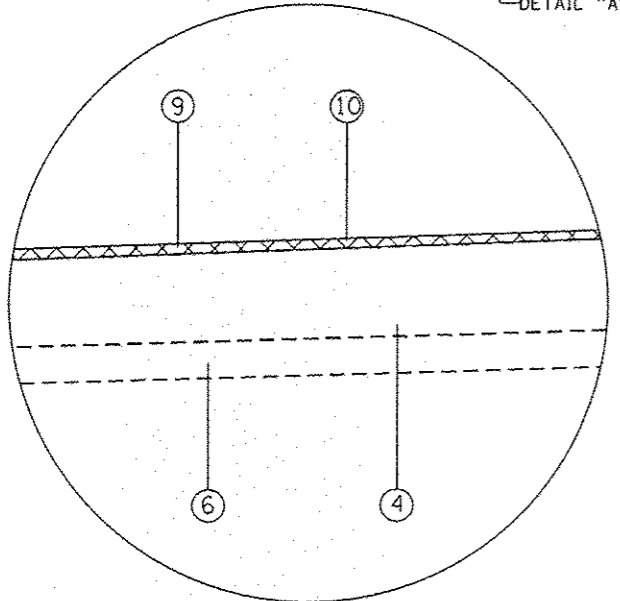
**I-72 TYPICAL SECTION**  
STA 32+07.55 TO STA 37+19.37

**LEGEND**

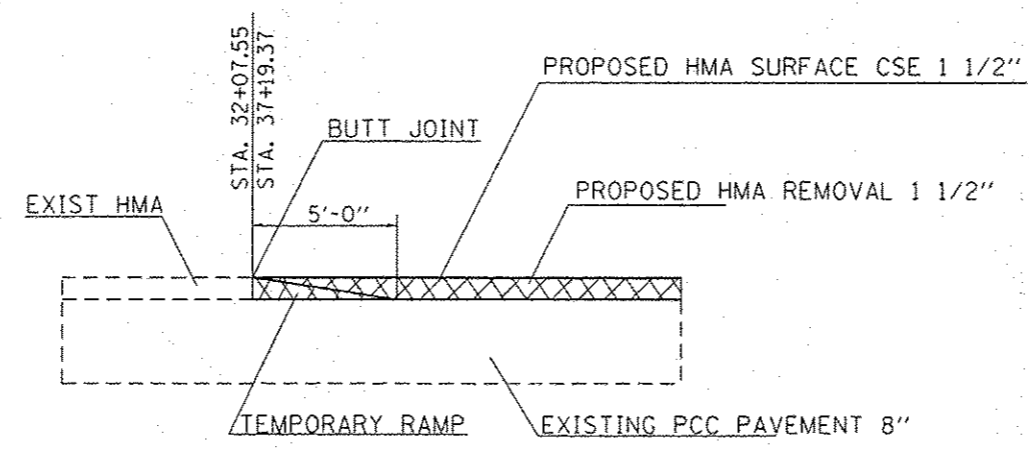
- ① Existing Aggregate Shoulder
- ② Existing Stabilized Shoulder, 8"
- ③ Existing Sub-surface Drain
- ④ Existing Continuously Reinforced PCC Pavement, 8"
- ⑤ Existing Longitudinal Joint
- ⑥ Existing Stabilized Sub-base, 4"
- ⑦ Existing Bituminous Shoulders (With Rumble Strips)
- ⑧ Existing Hot-Mix Asphalt 1 1/2"
- ⑨ Proposed Hot-Mix Asphalt Surface Removal Var. Depth
- ⑩ Proposed Polymerized Hot-Mix Asphalt Surface Course, Mix D, N90 1 1/2"
- ⑪ Proposed Preformed Plastic Pavement Marking, Type B - Inlaid - Line 5"
- ⑫ Modified Urethane Pavement Marking - Line 5"

**NOTES**

- 1. MILL TO BARE CONCRETE AT INDICATED LOCATIONS



DETAIL "A"



BUTT JOINT DETAIL (WB & EB)

FILE NAME :	USER NAME : sparksgw	DESIGNED -	REVISED -
c:\pwwork\pvc\dot\sparksgw\d9325513\0672\F09-sh-typical.dgn		DRAWN -	REVISED -
Default	PLOT SCALE = 100.0000' / 1"	CHECKED -	REVISED -
	PLOT DATE = Dec-20-2012 11:00:30AM	DATE -	REVISED -

STATE OF ILLINOIS  
DEPARTMENT OF TRANSPORTATION

Typical Section	
SCALE:	SHEET 5 OF 6 SHEETS STA. TO STA.

F.A. RTE.	SECTION	COUNTY	TOTAL SHEETS	SHEET NO.
72	(69-9) 1-4	MORGAN	6	5
CONTRACT NO. 72F89				
ILLINOIS FED. AID PROJECT				

