

03-08-13 LETTING ITEM 137

STATE OF ILLINOIS
DEPARTMENT OF TRANSPORTATION
DIVISION OF HIGHWAYS

**PROPOSED
HIGHWAY PLANS**

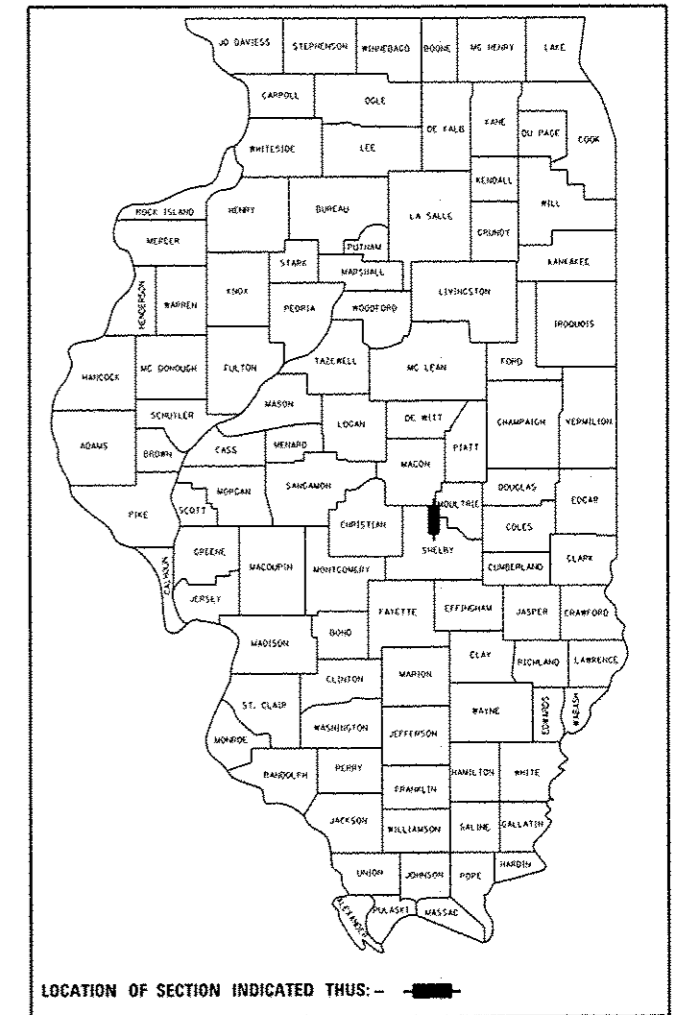
FAP ROUTE 770 (IL 128)
SECTION D7 HMA SAFETY SHLD 2013-1
PROJECT ACHSIP-ACF-0770(016)
SAFETY IMPROVEMENTS
SHELBY AND MOULTRIE COUNTIES

C-97-022-12

F.A.P. RTE.	SECTION	COUNTY	TOTAL SHEETS	SHEET NO.
770	.	**	8	1
ILLINOIS CONTRACT NO. 74552				

* D7 HMA SAFETY SHLD 2013-1
** Shelby & Moultrie *** 8+1=9

D-97-014-12



FOR INDEX OF SHEETS, SEE SHEET NO. 2

STATION EQUATIONS

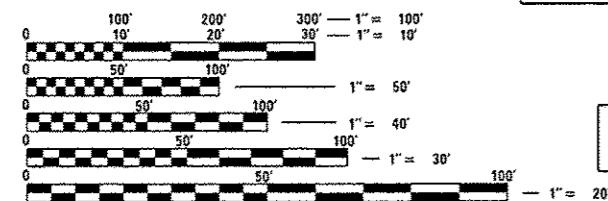
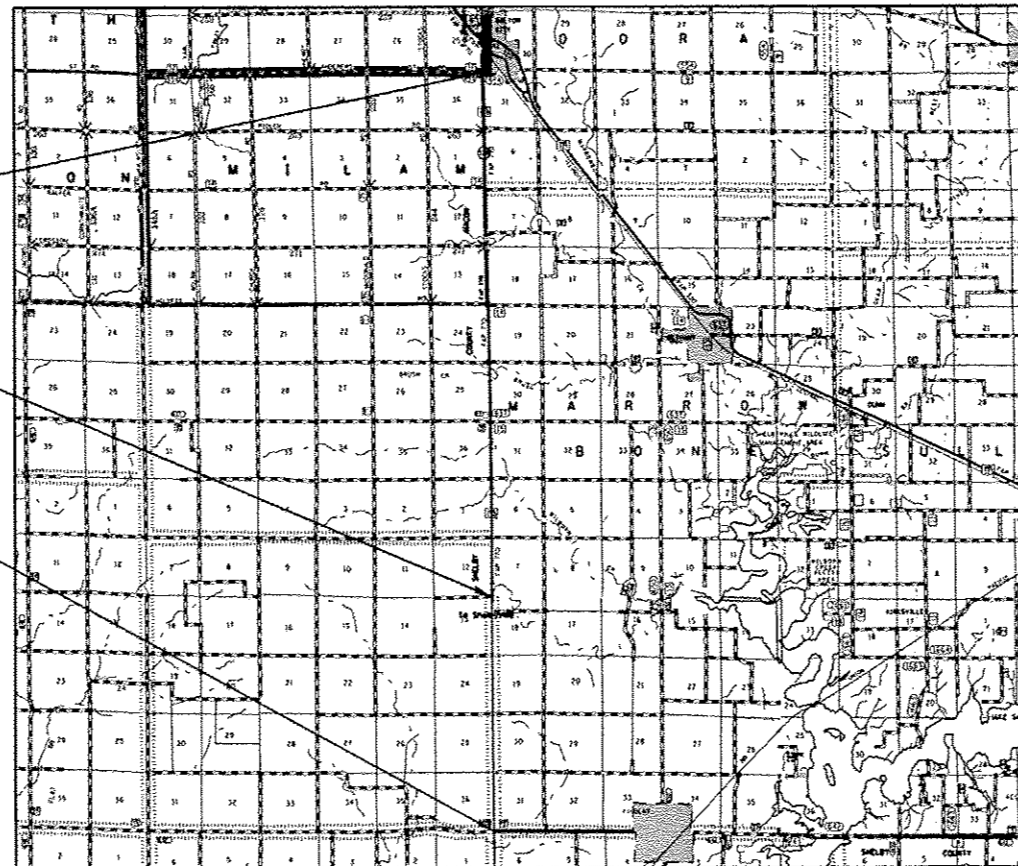
STA 633+22.98 BK = STA 633+18.57 AH
 STA 650+40.37 BK = STA 650+44.78 AH
 STA 782+81.02 BK = STA 782+95.55 AH
 STA 822+72.07 BK = STA 822+64.12 AH
 STA 842+04.98 BK = STA 842+12.93 AH

ADT (2011) = 2600

PROJECT ENDS
LT STA 1111+21
RT STA 1109+43

MOULTRIE/SHELBY CO.
STA 632+79.24

PROJECT BEGINS
STA 421+21



FULL SIZE PLANS HAVE BEEN PREPARED USING STANDARD ENGINEERING SCALES. REDUCED SIZED PLANS WILL NOT CONFORM TO STANDARD SCALES. IN MAKING MEASUREMENTS ON REDUCED PLANS, THE ABOVE SCALES MAY BE USED.

J.U.L.I.E.
JOINT UTILITY LOCATION INFORMATION FOR EXCAVATION
1-800-892-0123
OR 811

PROJECT ENGINEER: MARK DAUGHERTY
PROJECT MANAGER: BRIAN BIERMAN

CONTRACT NO. 74552

GROSS LENGTH = 68,985 FT. = 13.1 MILE
NET LENGTH = 67,326 FT. = 12.8 MILE

STATE OF ILLINOIS
DEPARTMENT OF TRANSPORTATION
DIVISION OF HIGHWAYS

SUBMITTED SEPT 11 2012
Roger L. Ditchell, Jr.
 DEPUTY DIRECTOR OF HIGHWAYS, REGION ENGINEER

Dec 7 2012
John D. Baranelli, P.E.
 acting ENGINEER OF DESIGN AND ENVIRONMENT

Dec 7 2012
William R. Frenzel
 acting DIRECTOR OF HIGHWAYS, CHIEF ENGINEER

PRINTED BY THE AUTHORITY
OF THE STATE OF ILLINOIS

GENERAL NOTES

THE CONTRACTOR SHALL PROVIDE INTERNET ACCESS TO THE HOT-MIX ASPHALT PLANT QUALITY CONTROL LAB SO THAT HOT-MIX ASPHALT PLANT REPORTS CAN BE E-MAILED TO THE DISTRICT HEADQUARTERS. THIS WORK SHALL BE INCLUDED IN THE COST OF HOT-MIX ASPHALT ITEMS.

CONCRETE HEADWALL REMOVAL SHALL BE INCLUDED IN THE COST OF PIPE CULVERT REMOVAL.

THE MATERIAL USED FOR AGGREGATE WEDGE SHOULDER, TYPE B SHALL BE CRUSHED STONE, CRUSHED CONCRETE, OR RAP.

THE MATERIAL USED FOR AGGREGATE SURFACE COURSE, TYPE B SHALL BE CRUSHED STONE OR CRUSHED CONCRETE.

THE MILLINGS COLLECTED FROM THE EXCAVATION OF THE HMA SHOULDERS SHALL BE USED AS BACKFILL FOR THE PROPOSED PIPE CULVERTS. THE PIPE CULVERTS SHALL BE BACKFILLED PER ARTICLE 542.06 (D) OF THE STANDARD SPECIFICATIONS. THE COST OF USING THE MILLINGS AS BACKFILL MATERIAL SHALL BE INCLUDED IN THE CONTRACT UNIT PRICE PER UNIT FOR EXCAVATING AND GRADING EXISTING SHOULDER.

THE TOTAL QUANTITY OF PAINT PAVEMENT MARKING - LINE 4" CONSISTS OF 136,364 FEET OF WHITE AND 17,247 FEET OF YELLOW.

THE FOLLOWING MIXTURE REQUIREMENTS ARE APPLICABLE FOR THIS PROJECT:

HMA SHOULDER

MIXTURE USE: HMA SHOULDERS, 8"
 APPLICATION: HOT-MIX ASPHALT SHOULDERS
 PG GRADE: PG 64-22
 DESIGN AIR VOIDS: 4.0% @ NDESIGN = 30
 MIXTURE COMPOSITION: IL-19.0L
 FRICTION AGGREGATE: N/A

INCIDENTAL HMA SURFACING

MIXTURE USE: INCIDENTAL HMA SURFACING (DRIVEWAYS/SIDEROADS)
 APPLICATION: HOT-MIX ASPHALT SURFACE COURSE, MIX "C", N70
 PG GRADE: PG 64-22
 DESIGN AIR VOIDS: 4.0% @ NDESIGN = 70
 MIXTURE COMPOSITION: IL-9.5
 FRICTION AGGREGATE: MIXTURE C

INDEX OF SHEETS

SHEET NO.	ITEM
1	COVER SHEET
2	INDEX OF SHEETS & GENERAL NOTES
3	SUMMARY OF QUANTITIES
4	TYPICAL SECTION
5-6	SCHEDULES
7	ENTRANCE SCHEDULE AND DETAILS
8	TYPICAL APPLICATIONS OF PAVEMENT MARKING

THE FOLLOWING STANDARDS ARE A PART OF THESE PLANS AND ARE INCLUDED AFTER SHEET NO. 11:

STD. NO.	DESCRIPTION
000001-06	STANDARD SYMBOLS, ABBREVIATIONS AND PATTERNS
001006	DECIMAL OF AN INCH AND OF A FOOT
482001-02	HMA SHOULDER ADJACENT TO FLEXIBLE PAVEMENT
642006	SHOULDER RUMBLE STRIPS, 8 in.
701011-03	OFF-RD MOVING OPERATIONS, 2L, 2W, DAY ONLY
701201-04	LANE CLOSURE, 2L, 2W, DAY ONLY, FOR SPEEDS => 45 MPH
701311-03	LANE CLOSURE, 2L, 2W, MOVING OPERATIONS - DAY ONLY
701326-04	LANE CLOSURE, 2L, 2W, PAVEMENT WIDENING, FOR SPEEDS => 45 MPH
701901-03	TRAFFIC CONTROL DEVICES

FILE NAME : c:\pwwork\pawid\teasley\0279424\07	USER NAME : teasley	DESIGNED -	REVISIONS -	STATE OF ILLINOIS DEPARTMENT OF TRANSPORTATION	GENERAL NOTES & INDEX OF SHEETS	F.A.P. RTE. 770	SECTION -	COUNTY ..	TOTAL SHEETS 8	SHEET NO. 2	
PL01 SCALE : 100.0000 1/4 in.	4552-shr-gennote.dgn	DRAWN -	REVISIONS -			CONTRACT NO. 74552					
PL01 DATE : 9/11/2012		CHECKED -	REVISIONS -			ILLINOIS FED. AID PROJECT					
Default		DATE -	REVISIONS -			* 07 HMA SAFETY SHLD 2013-1 ** Shelby & Moultrie					

ILLINOIS DEPARTMENT OF TRANSPORTATION			TOTAL QUANTITIES	CONSTRUCTION TYPE CODE					
SUMMARY OF QUANTITIES				0021					
				SHELBY CO. (173)		MOULTRIE CO. (139)			
CODE NO	ITEM	UNIT		ACHSIP 90% FED. 10% STATE	ACF 80% FED. 20% STATE	ACHSIP 90% FED. 10% STATE	ACF 80% FED. 20% STATE		
20200600	EXCAVATING AND GRADING EXISTING SHOULDER	UNIT	1334	315	105	685	229		
35101400	AGGREGATE BASE COURSE, TYPE B	TON	27	7	3	13	4		
40200800	AGGREGATE SURFACE COURSE, TYPE B	TON	174	38	13	92	31		
40201000	AGGREGATE FOR TEMPORARY ACCESS	TON	13	4	1	6	2		
40800050	INCIDENTAL HOT-MIX ASPHALT SURFACING	TON	42	10	3	22	7		
48102100	AGGREGATE WEDGE SHOULDER, TYPE B	TON	5063	1195	398	2602	868		
48203029	HOT-MIX ASPHALT SHOULDERS, 8"	SO YD	59269	13984	4661	30468	10156		
50105220	PIPE CULVERT REMOVAL	FOOT	1388	344	115	697	232		
54213450	END SECTIONS 15"	EACH	108	25	9	55	19		
54213453	END SECTIONS 18"	EACH	6			4	2		
54200220	PIPE CULVERTS, CLASS D, TYPE 1 15"	FOOT	1659	421	140	823	275		
54200223	PIPE CULVERTS, CLASS D, TYPE 1 18"	FOOT	73			55	18		
64200108	SHOULDER RUMBLE STRIPS, 8 INCH	FOOT	133677	30640	10213	69618	23206		
67000500	ENGINEER'S FIELD OFFICE, TYPE B	CAL MO	4	1		2	1		

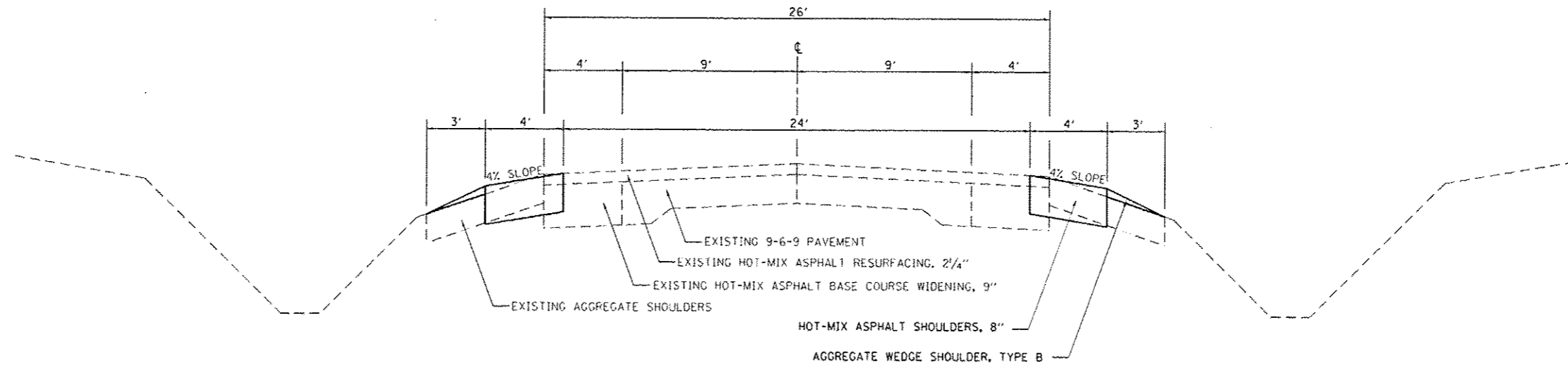
FILE NAME :	USER NAME : teasleych	DESIGNED -	REVISED -
c:\pwwork\pwwork\teasleych\0279424\07	4552.sht-soq.dgn	DRAWN -	REVISED -
	PLOT SCALE : 100.0000 / in.	CHECKED -	REVISED -
Default	PLOT DATE : 11/16/2012	DATE -	REVISED -

STATE OF ILLINOIS
DEPARTMENT OF TRANSPORTATION

SUMMARY OF QUANTITIES

SCALE: SHEET OF SHEETS STA. TO STA.

F.A.P. RTE.	SECTION	COUNTY	TOTAL SHEETS	SHEET NO.
770	.	**	8	3
ILLINOIS FED. AID PROJECT			CONTRACT NO. 74552	



TYPICAL SECTION

FILE NAME -	USER NAME - teasley	DESIGNED -	REVISED -	STATE OF ILLINOIS DEPARTMENT OF TRANSPORTATION	TYPICALS			F.A.P. RTE.	SECTION	COUNTY	TOTAL SHEETS	SHEET NO.
c:\pwork\p\p\p\teasley\0279424\02	74552-shc-typical.dgn	DRAWN -	REVISED -					770	*	**	8	4
Default	PLOT SCALE - 1/8" = 1' / in.	CHECKED -	REVISED -		SCALE: SHEET OF SHEETS STA. TO STA.			ILLINOIS FED. AID PROJECT		CONTRACT NO. 74552		
	PLOT DATE - 9/11/2012	DATE -	REVISED -							* D7 HMA SAFETY SHLD 2013-1 ** Shelby & Moufria		

PIPE CULVERT REMOVAL

STATION	SIDE	TYPE	SIZE (INCHES)	QUANTITY (FOOT)
430+17	RT	VCP	12	22.0
460+53	RT	VCP	15	18.2
473+59	RT	VCP	15	31.6
476+07	RT	VCP	15	22.1
480+39	RT	VCP	15	18.1
486+89	LT	VCP	15	33.8
489+87	RT	VCP	15	22.1
513+23	RT	VCP	12	18.3
513+37	LT	VCP	12	22.5
528+20	LT	VCP	15	33.7
531+02	RT	VCP	12	18.4
565+13	RT	VCP	12	22.4
606+07	RT	VCP	12	33.7
612+32	LT	VCP	15	45.3
619+16	RT	VCP	12	47.1
632+65	RT	VCP	15	18.0
632+79	LT	VCP	15	31.7
642+31	LT	VCP	15	22.1
648+88	RT	VCP	15	27.7
667+75	LT	CMP	12	22.2
688+55	LT	VCP	12	22.3
731+41	LT	VCP	15	30.3
752+33	RT	VCP	12	18.1
752+41	LT	VCP	12	18.2
761+49	RT	CMP	12	30.1
778+91	LT	VCP	15	18.0
792+30	LT	VCP	15	41.7
808+74	RT	VCP	12	21.7
828+96	RT	VCP	12	17.9
850+92	LT	VCP	15	22.1
865+57	RT	VCP	12	18.4
872+11	LT	VCP	12	34.1
883+74	RT	VCP	12	18.3
892+24	LT	VCP	12	18.6
898+72	LT	VCP	15	41.8
903+73	RT	VCP	15	18.7
910+28	RT	CMP	15	18.7
911+99	LT	VCP	15	34.1
923+34	RT	VCP	12	18.5
925+42	LT	VCP	12	18.1
926+13	RT	VCP	12	22.9
932+35	LT	VCP	12	19.6
937+01	RT	VCP	12	18.8
978+74	LT	VCP	12	17.8
979+03	RT	VCP	12	18.2
991+63	LT	VCP	12	18.7
998+57	RT	VCP	12	18.3
1003+21	RT	VCP	12	27.8
1005+24	LT	VCP	12	36.6
1015+45	RT	VCP	12	18.0
1029+70	RT	VCP	18	18.1
1043+37	RT	VCP	15	22.8
1057+82	RT	VCP	18	19.0
1058+48	RT	VCP	15	32.5
1058+51	LT	VCP	15	31.8
1087+99	LT	VCP	12	18.3
1100+18	RT	VCP	18	18.2
TOTAL =				1388

PIPE CULVERT SCHEDULE

STATION	SIDE	PIPE CULVERT, CLASS D, TYPE I, 15"		PIPE CULVERT, CLASS D, TYPE I, 18"	
		FOOT	EACH	FOOT	EACH
430+17	RT	28	2	-	-
460+53	RT	24	2	-	-
473+59	RT	38	2	-	-
476+07	RT	28	2	-	-
480+39	RT	24	2	-	-
486+89	LT	40	2	-	-
489+87	RT	28	2	-	-
513+23	RT	24	2	-	-
513+37	LT	29	2	-	-
528+20	LT	40	2	-	-
531+02	RT	24	2	-	-
565+13	RT	28	2	-	-
606+07	RT	40	2	-	-
612+32	LT	51	2	-	-
619+16	RT	53	2	-	-
632+65	RT	24	2	-	-
632+79	LT	38	2	-	-
642+31	LT	28	2	-	-
648+88	RT	34	2	-	-
667+75	LT	28	2	-	-
688+55	LT	28	2	-	-
731+41	LT	36	2	-	-
752+33	RT	24	2	-	-
752+41	LT	24	2	-	-
761+49	RT	36	2	-	-
778+91	LT	24	2	-	-
792+30	LT	48	2	-	-
808+74	RT	28	2	-	-
828+96	RT	24	2	-	-
850+92	LT	28	2	-	-
865+57	RT	24	2	-	-
872+11	LT	40	2	-	-
883+74	RT	24	2	-	-
892+24	LT	25	2	-	-
898+72	LT	48	2	-	-

PIPE CULVERT SCHEDULE CONTINUED

STATION	SIDE	PIPE CULVERT, CLASS D, TYPE I, 15"		PIPE CULVERT, CLASS D, TYPE I, 18"	
		FOOT	EACH	FOOT	EACH
903+73	RT	25	2	-	-
910+28	RT	25	2	-	-
911+99	LT	40	2	-	-
923+34	RT	25	2	-	-
925+42	LT	24	2	-	-
926+13	RT	29	2	-	-
932+35	LT	26	2	-	-
937+01	RT	25	2	-	-
978+74	LT	24	2	-	-
979+03	RT	24	2	-	-
991+63	LT	25	2	-	-
998+57	RT	24	2	-	-
1003+21	RT	34	2	-	-
1005+24	LT	43	2	-	-
1015+45	RT	24	2	-	-
1029+70	RT	-	-	24	2
1043+37	RT	29	2	-	-
1057+82	RT	-	-	25	2
1058+48	RT	39	2	-	-
1058+51	LT	38	2	-	-
1087+99	LT	24	2	-	-
1100+18	RT	-	-	24	2
TOTAL =		1659	73	108	6

PAVEMENT MARKING SCHEDULE

STATION TO STATION			PAINT PAVEMENT MARKING - LINE 4"
			FOOT
421+21	TO	632+79.24	47274
632+79.24	TO	1111+21	106337
TOTAL =			153611

SHOULDER SCHEDULE

STATION TO STATION			SIDE	LENGTH FEET	EXCAVATING AND GRADING EXISTING SHOULDER UNIT	AGGREGATE WEDGE SHOULDER, TYPE B TON	HOT-MIX ASPHALT SHOULDERS, 8" SO YD	SHOULDER RUMBLE STRIPS, 8 INCH FOOT	
	TO								
421+21.00	TO	632+79.24	LT & RT	21158	420	1594	18645	40853	
SHELBY/MOULTRIE COUNTY LINE									
632+79.20	TO	633+22.98	LT & RT	44	0.9	3.3	39	87.6	
STA 633+22.98 BK = STA 633+18.57 AH									
633+18.57	TO	650+40.37	LT & RT	1722	34	131	1530	3368	
STA 650+40.37 BK = STA 650+44.78 AH									
650+44.78	TO	782+81.02	LT & RT	13236	259	983	11506	25991	
STA 782+81.02 BK = STA 782+95.55 AH									
782+95.55	TO	822+72.07	LT & RT	3977	78	294	3446	7754	
STA 822+72.07 BK = STA 822+64.12 AH									
822+64.12	TO	842+04.98	LT & RT	1941	38	145	1699	3882	
STA 842+04.98 BK = STA 842+12.93 AH									
842+12.93	TO	1109+43.00	LT & RT	26730	502	1906	22325	51563	
1109+43.00	TO	1111+21.00	LT	178	2	7	79	178	
TOTALS =						1334	5063	59269	133677

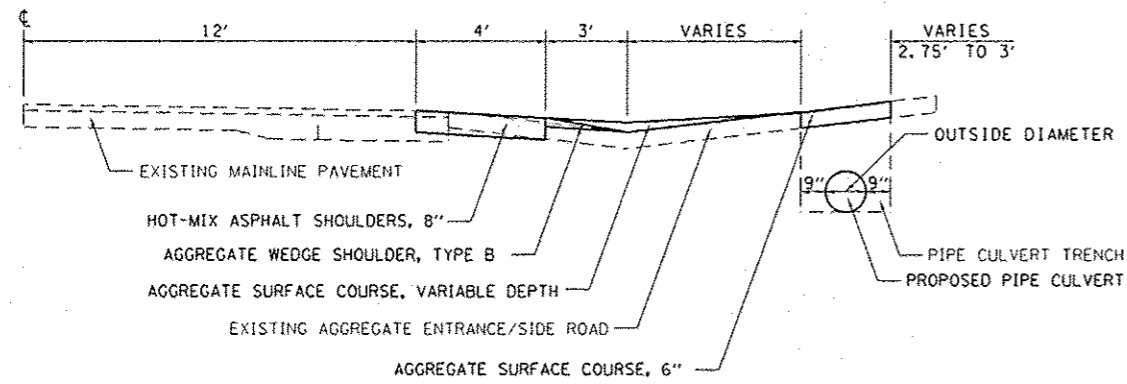
HMA AND AGGREGATE SHOULDER OMISSIONS:

STATION	ID	STATION	SIDE
726+63	TO	729+50	LT
841+58	TO	845+70	LT
950+70	TO	951+09	LT
957+01	TO	960+84	LT
1100+16	TO	1105+54	LT
841+92	TO	845+70	RT
950+70	TO	951+09	RT
957+53	TO	960+84	RT
1100+16	TO	1105+54	RT

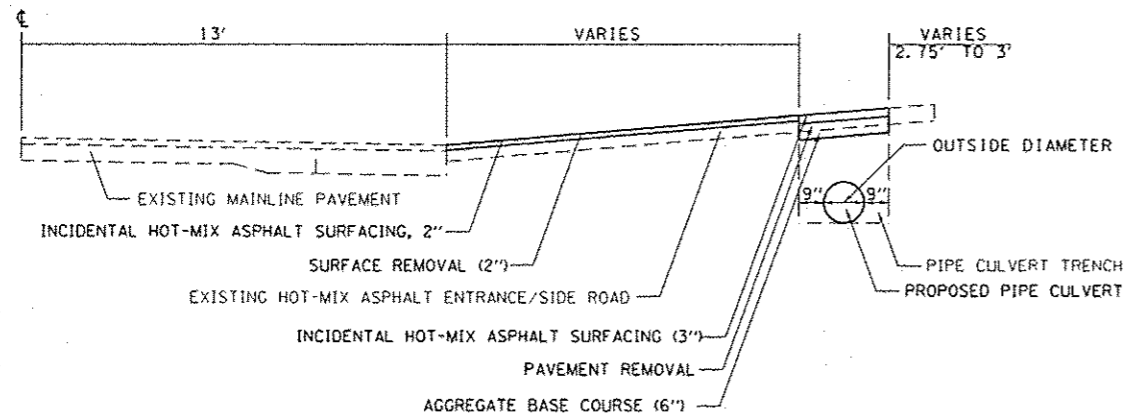
RUMBLE STRIP OMISSIONS:

STATION	ID	STATION	SIDE
727+87	TO	728+43	LT
950+70	TO	951+09	LT
958+91	TO	959+48	LT
727+87	TO	728+43	RT
950+70	TO	951+09	RT
958+91	TO	959+48	RT

FILE NAME : c:\pwork\pwork\teasley\08279424\07	USER NAME : teasley	DESIGNED -	REVISED -	STATE OF ILLINOIS DEPARTMENT OF TRANSPORTATION	SCHEDULES				F.A.P. RTE. 770	SECTION .	COUNTY ..	TOTAL SHEETS 8	SHEET NO. 6
PLDT SCALE : 1/80.0000 / in	CHECKED -	REVISED -	REVISED -		SCALE:	SHEET	OF	SHEETS	STA.	TO STA.	ILLINOIS FED. AID PROJECT CONTRACT NO. 74552		
Default	PLDT DATE : 9/11/2012	DATE -	REVISED -		* 07 HMA SAFETY SHLD 2013-1 **Shelby & Moultrie								



AGGREGATE ENTRANCE DETAIL



HOT-MIX ASPHALT ENTRANCE AND SIDE ROAD DETAIL

1. THE COST OF THE SURFACE REMOVAL, 2" AND THE PAVEMENT REMOVAL FOR THE ENTRANCES AND PUBLIC ROAD APPROACHES SHALL BE INCLUDED IN THE PAY ITEM INCIDENTAL HOT-MIX ASPHALT SURFACING.

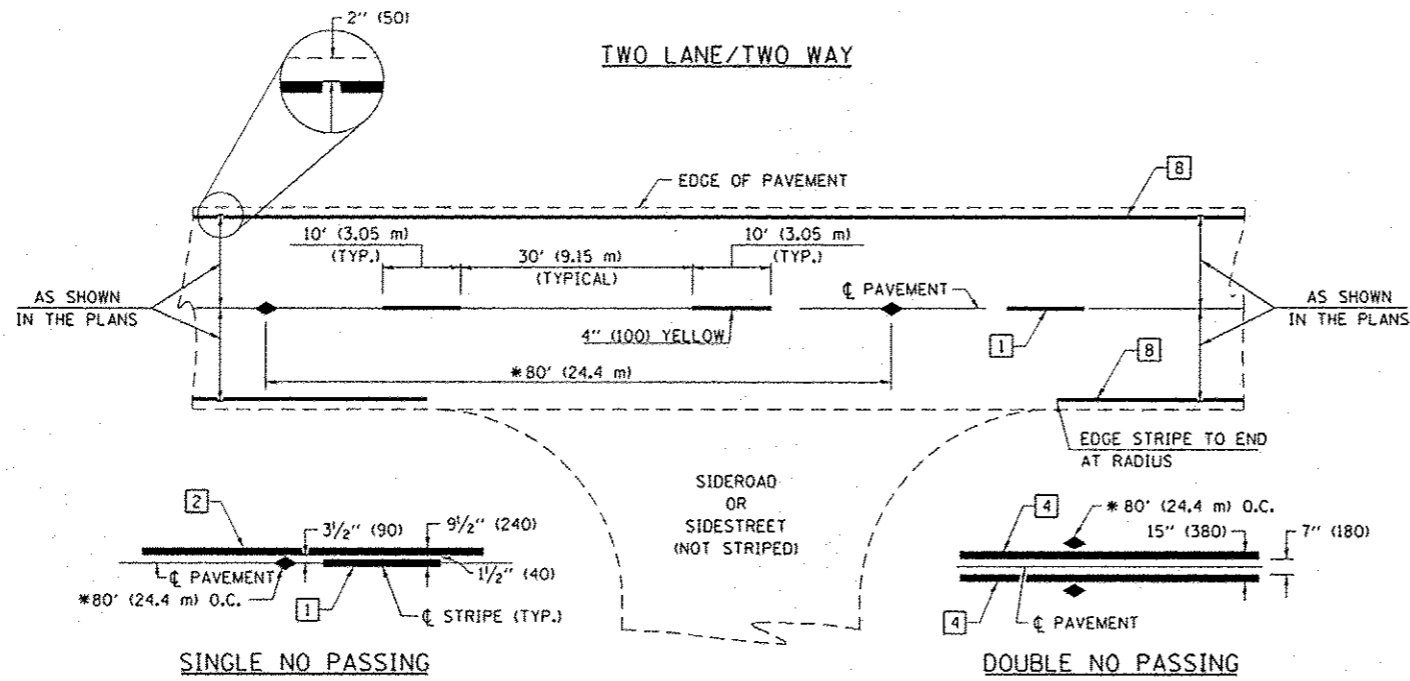
2. THE COST OF THE BITUMINOUS MATERIALS AND AGGREGATE (PRIME COAT) FOR THE ENTRANCES AND PUBLIC ROAD APPROACHES SHALL BE INCLUDED IN THE PAY ITEM INCIDENTAL HOT-MIX ASPHALT SURFACING.

ENTRANCE SCHEDULE

STATION	SIDE	TYPE	MATERIAL TYPE	AGGREGATE BASE COURSE TON	AGGREGATE SURFACE COURSE, TYPE B TON	AGGREGATE FOR TEMPORARY ACCESS TON	INCIDENTAL HOT-MIX ASPHALT SURFACING TON
430+17	RT	FE	AGG	-	2.5	-	-
460+53	RT	FE	AGG	-	2.6	-	-
473+59	RT	PRA	BIT	2.8	-	1.4	3.7
476+07	RT	PE	AGG	-	3.2	-	-
480+39	RT	FE	AGG	-	2.7	-	-
486+89	LT	FE	AGG	-	5.4	-	-
489+87	RT	PE	BIT	1.7	-	0.8	2.2
513+23	RT	FE	AGG	-	2.7	-	-
513+37	LT	FE	AGG	-	3.4	-	-
528+20	LT	FE	AGG	-	5.4	-	-
531+02	RT	FE	AGG	-	3.2	-	-
565+13	RT	FE	AGG	-	3.5	-	-
606+07	RT	PE	AGG	-	6.0	-	-
612+32	LT	PE	AGG	-	7.7	-	-
619+16	RT	PRA	BIT	3.4	-	1.7	4.1
632+50	RT	FE	AGG	-	2.9	-	-
632+79	LT	PRA	BIT	2.5	-	1.3	3.4
642+31	LT	PE	AGG	-	3.4	-	-
648+88	RT	FE	AGG	-	4.3	-	-
667+75	LT	PE	AGG	-	3.6	-	-
688+55	LT	FE	AGG	-	2.9	-	-
731+41	LT	FE	BIT	2.7	-	1.3	3.7
752+33	RT	FE	AGG	-	3.7	-	-
752+41	LT	FE	AGG	-	4.0	-	-
761+49	RT	PE	AGG	-	4.0	-	-
778+91	LT	FE	AGG	-	3.5	-	-
792+30	LT	FE	AGG	-	6.9	-	-
808+74	RT	FE	AGG	-	3.1	-	-
828+96	RT	FE	AGG	-	3.7	-	-
850+92	LT	FE	AGG	-	3.4	-	-
865+57	RT	FE	AGG	-	3.0	-	-
872+11	LT	FE	AGG	-	5.8	-	-
883+74	RT	FE	AGG	-	2.8	-	-
892+24	LT	FE	AGG	-	3.0	-	-
898+72	LT	PRA	BIT	3.8	-	1.8	5.5
903+73	RT	FE	AGG	-	2.6	-	-
910+28	RT	FE	AGG	-	2.9	-	-
911+99	LT	FE	AGG	-	5.8	-	-
923+34	RT	FE	AGG	-	2.9	-	-
925+42	LT	FE	AGG	-	2.9	-	-
926+13	RT	PE	AGG	-	3.2	-	-

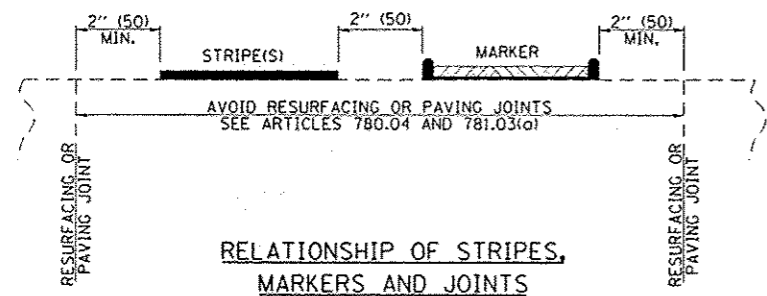
ENTRANCE SCHEDULE CONTINUED

STATION	SIDE	TYPE	MATERIAL TYPE	AGGREGATE BASE COURSE TON	AGGREGATE SURFACE COURSE, TYPE B TON	AGGREGATE FOR TEMPORARY ACCESS TON	INCIDENTAL HOT-MIX ASPHALT SURFACING TON
932+35	LT	FE	AGG	-	2.9	-	-
937+01	RT	FE	AGG	-	2.9	-	-
978+74	LT	FE	AGG	-	2.5	-	-
979+03	RT	FE	AGG	-	3.1	-	-
991+63	LT	FE	AGG	-	2.9	-	-
998+57	RT	FE	AGG	-	4.3	-	-
1003+21	RT	PRA	BIT	2.4	-	1.2	5.9
1005+24	LT	PRA	BIT	2.5	-	1.3	7
1015+45	RT	FE	AGG	-	5.7	-	-
1029+70	RT	FE	AGG	-	5.2	-	-
1043+37	RT	FE	AGG	-	3.5	-	-
1057+82	RT	FE	AGG	-	3.2	-	-
1058+48	RT	PRA	BIT	2.7	-	1.3	3.3
1058+51	LT	PRA	BIT	2.7	-	1.3	3.6
1087+99	LT	FE	AGG	-	2.8	-	-
1100+18	RT	FE	AGG	-	3.0	-	-
TOTALS:				27	174	13	42



PAVEMENT MARKING LEGEND

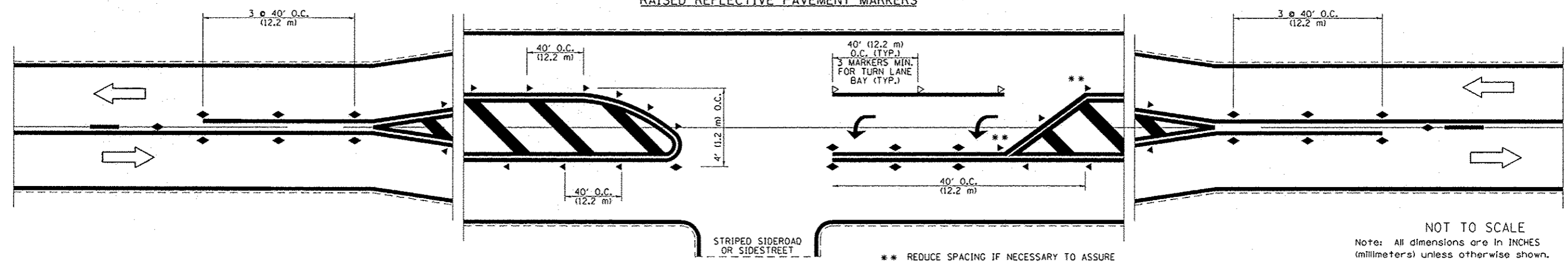
- 1 4" (100) SKIP-DASH (YELLOW)
 - 2 4" (100) SOLID (YELLOW)
 - 3 12" (300) DIAGONAL (YELLOW)
 - 4 4" (100) DOUBLE YELLOW (NARROW)
 - 5 12" (300) SOLID WHITE
 - 6 RESERVED
 - 7 6" (150) SKIP-DASH (WHITE)
 - 8 4" (100) SOLID (WHITE)
 - 9 12" (300) DIAGONAL (WHITE)
 - 10 6" (150) SOLID (WHITE)
 - 11 24" (600) STOP BAR (WHITE)
 - 12 8" (200) SOLID (WHITE)
 - 13 4" (100) PARKING WHITE
-



TYPICAL PAVEMENT MARKERS LEGEND

- ◆ TWO-WAY AMBER MARKER
- ▶ ONE-WAY AMBER MARKER
- ▷ ONE-WAY CRYSTAL MARKER

RAISED REFLECTIVE PAVEMENT MARKERS



NOT TO SCALE
 Note: All dimensions are in INCHES (millimeters) unless otherwise shown.

FILE NAME: c:\pwork\pwidet\teasleyk\0279424\07	USER NAME: teasleyk	DESIGNED: 4552-shi-detail.dgn	REVISIONS:	STATE OF ILLINOIS DEPARTMENT OF TRANSPORTATION	PAVEMENT MARKING AND RAISED REFLECTIVE PAVEMENT MARKERS (RURAL & URBAN APPLICATIONS)	F.A.P. RTE. 770	SECTION	COUNTY	TOTAL SHEETS 8	SHEET NO. 8		
		CHECKED: 100.0000	REVISIONS:			SCALE:	SHEET NO. 1 OF 1 SHEETS	STA.	TO STA.	CONTRACT NO. 74552		
		PLOT DATE: 9/11/2012	REVISIONS:			ILLINOIS FED. AID PROJECT						
* D7 HMA SAFETY SHLD 2013-1 ** Sholby & Moultrie												