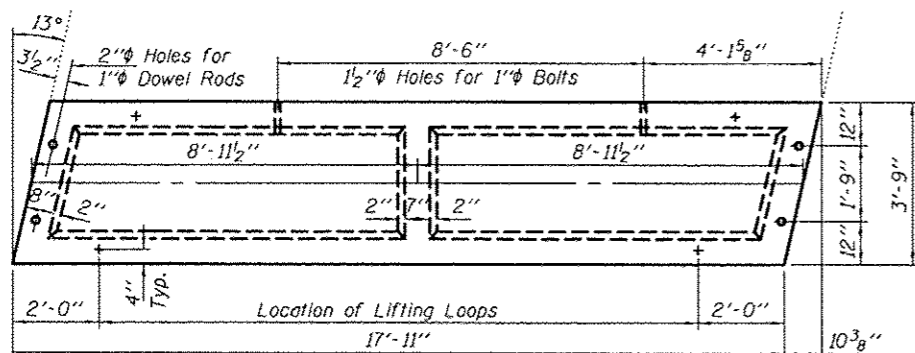
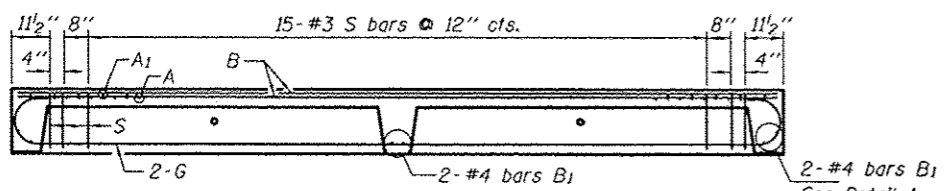


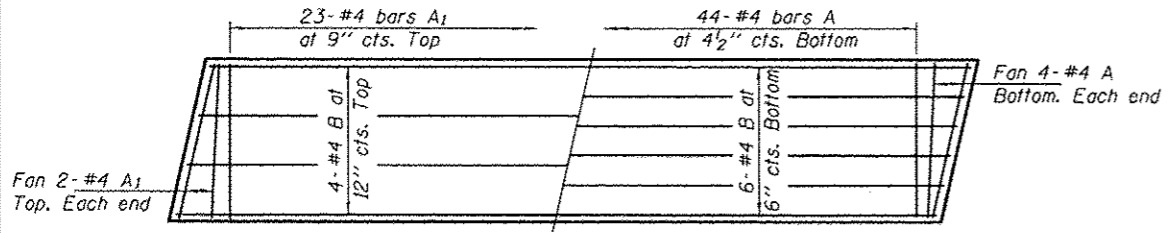
**ELEVATION**  
Showing rail post spacing



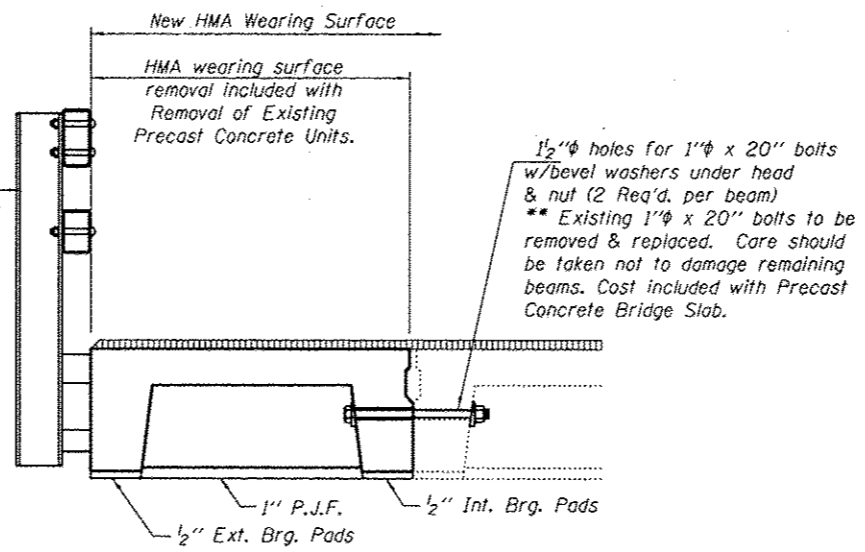
**TYPICAL PLAN OF BEAM**



**LONGITUDINAL SECTION**

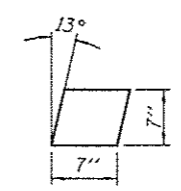


**PLAN**  
Showing Slab Reinforcement

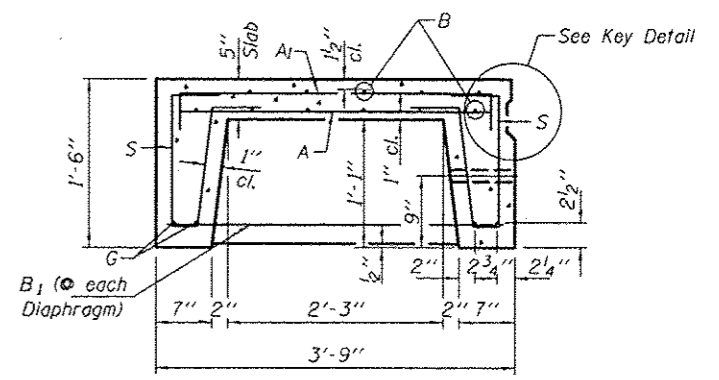


**PARTIAL CROSS SECTION**

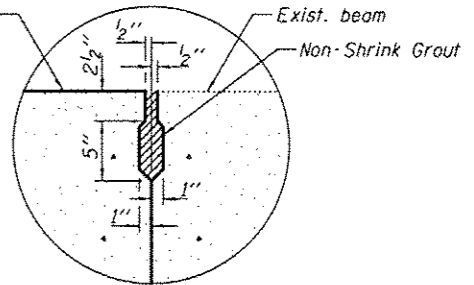
\*\* New bolts shall only be snug tightened after placement.



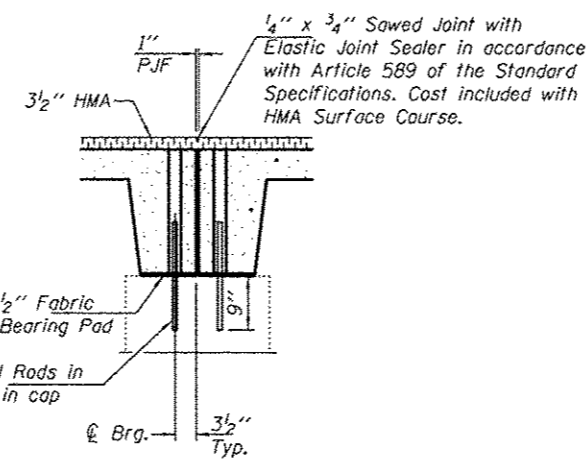
**BEARING PADS**  
1/2" Fabric Pads  
(4 Req'd. per beam)



**TYPICAL SECTION THRU BEAM**

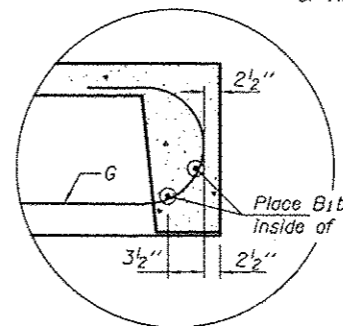


**KEY DETAIL**



**SECTION THRU ABUTMENT**  
(At Rt. Ls.)

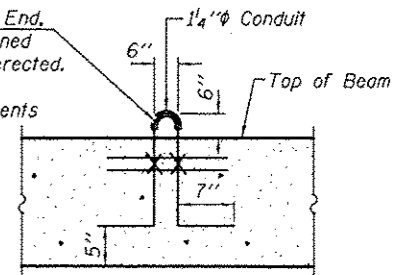
\* Existing dowel rods are to be burned off, ground flush, and sealed with epoxy prior to placement of new beams. Cost included in Removal of Existing Precast Concrete Units. After beams have been erected holes shall be drilled into cap and dowel rods placed. Dowel holes shall be filled with non-shrink grout to top of beam and allowed to cure a minimum of 24 hours prior to grouting the shear keys.



**DETAIL A**

Note: The surface of the member shall not deviate more than 1/1200 of the full length of the member from a straight line connecting the two end points on the member's surface. (See Special Provision Precast Concrete Structures)

3-1/2" Strands/Loop, 2 Ea. End, Ea. Beam. Loop shall be burned off after beams have been erected. Strands shall conform to the requirements of AASHTO M 203.



**LIFTING LOOP**

Approved alternate may be substituted for the above.

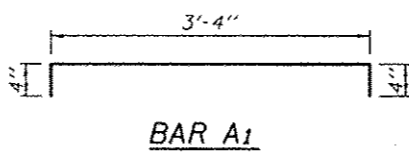
**\* BILL OF REINFORCEMENT BARS FOR ONE BEAM**

Bar	No.	Size	Length	Shape
A	52	#4	3'-3"	—
A <sub>1</sub>	27	#4	4'-0"	—
B	10	#4	17'-6"	—
B <sub>1</sub>	6	#4	3'-6"	—
G	4	#10	20'-4"	—
S	38	#3	3'-4"	U

**\* ESTIMATED QUANTITIES FOR ONE BEAM**

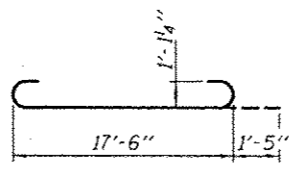
	CONCRETE CU. YDS.	RE-BARS POUNDS
One Unit	2.3	710

\* For information of suppliers of Precast Slab Units only.

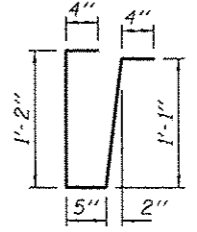


**BAR A1**

Note: Tack welding of stirrups to bottom longitudinal reinforcement bars will not be permitted except as otherwise authorized in writing by the Engineer.



**BAR G**



**BAR S**

DESIGNED VP  
CHECKED VHV  
DRAWN boliva  
CHECKED VP VHV

EXAMINED  
PASSED  
DATE JANUARY 31, 2013  
REVISOR  
REVISOR

STATE OF ILLINOIS  
DEPARTMENT OF TRANSPORTATION

SUPERSTRUCTURE DETAILS  
SN 060-0249

SHEET NO. 2 OF 5 SHEETS

F.A.P. RTE. SECTION COUNTY TOTAL SHEETS SHEET NO.  
789 054,58,60RS-4 MADISON 44 41  
CONTRACT NO. 76F27  
ILLINOIS FED. AID PROJECT