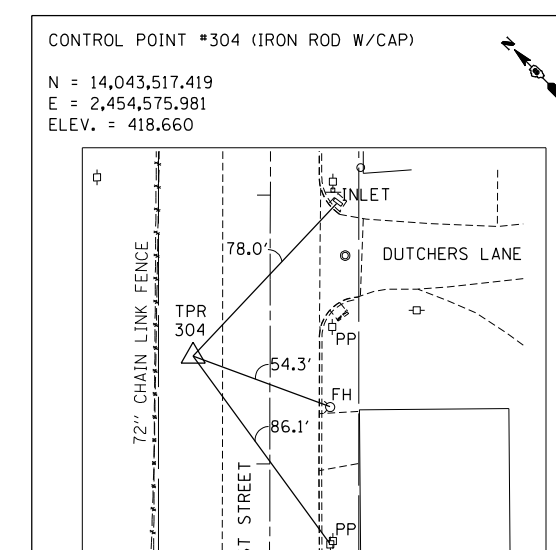
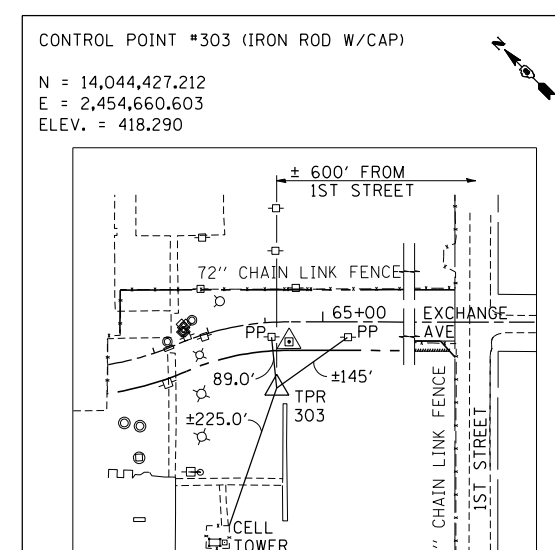
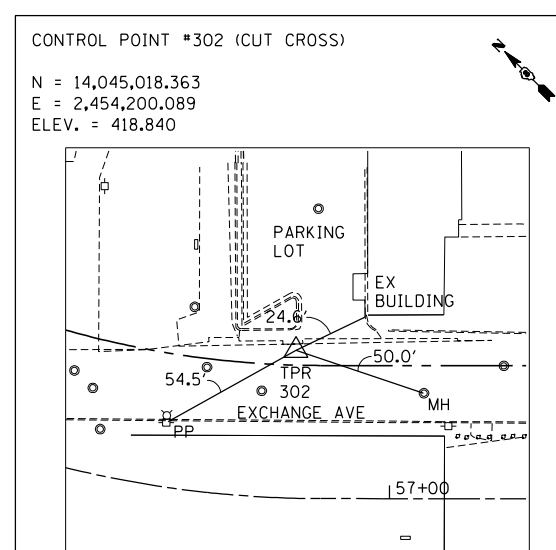
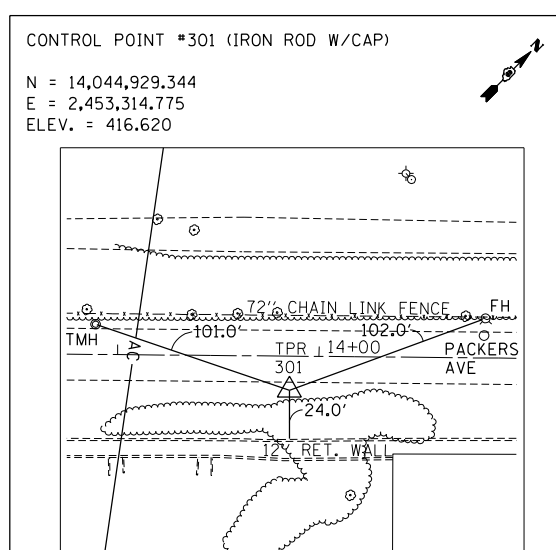
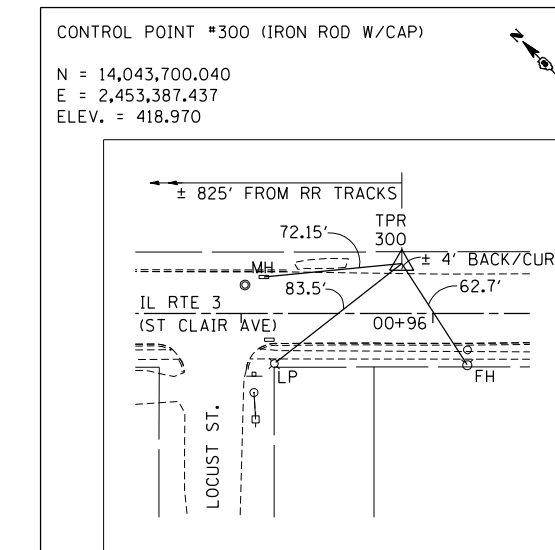
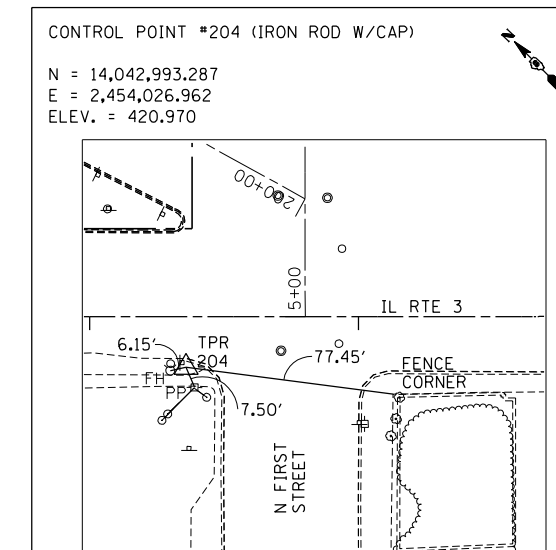
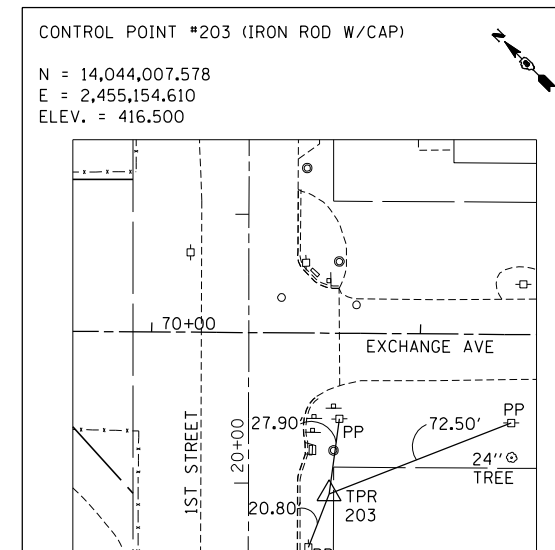
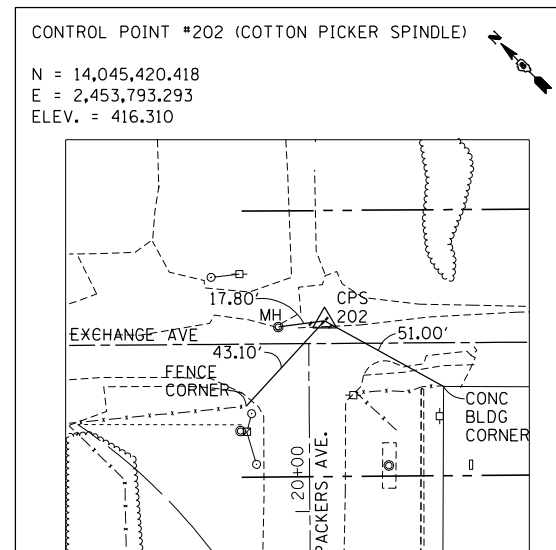
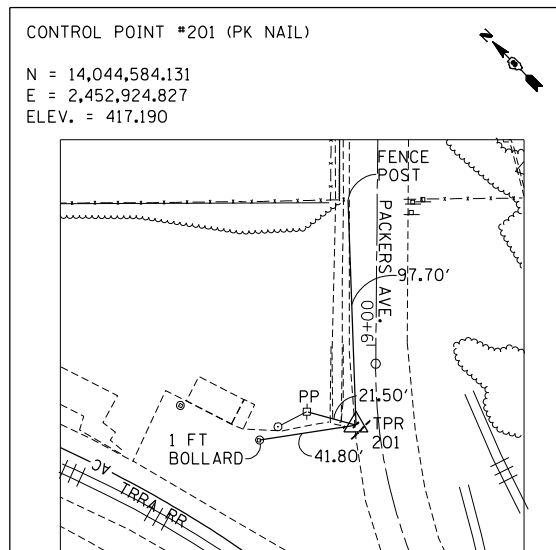
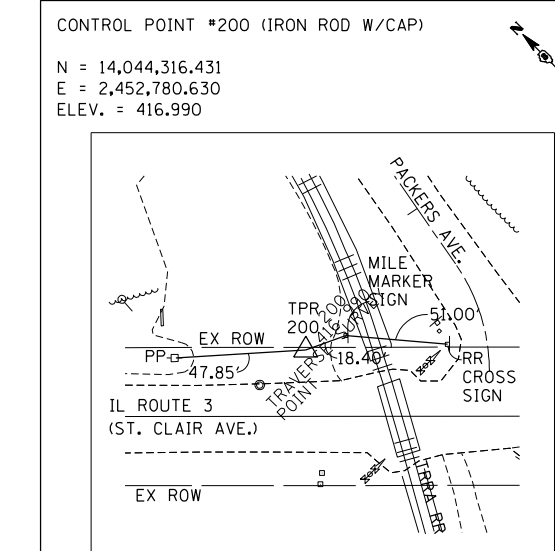
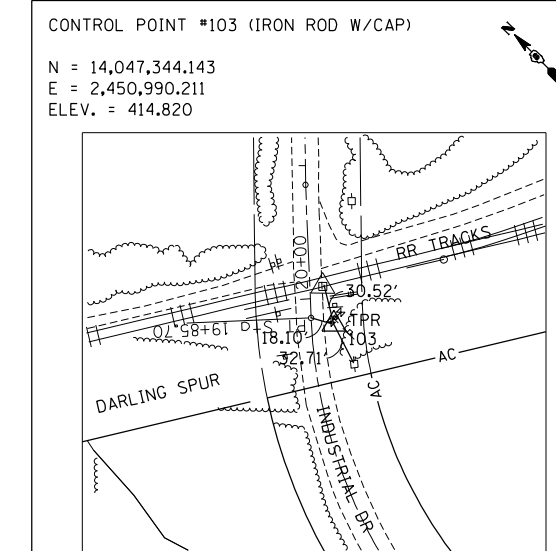
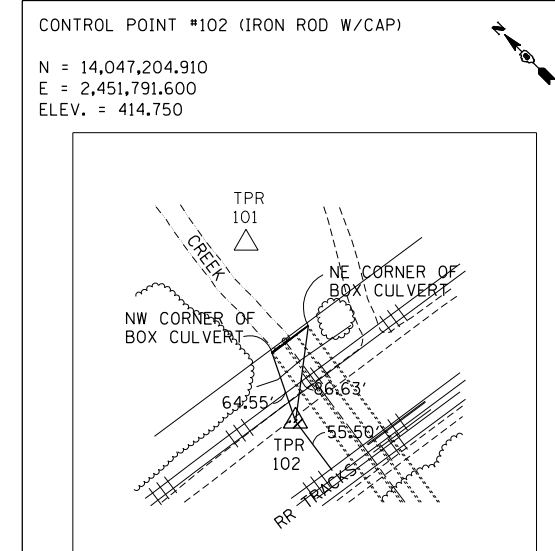
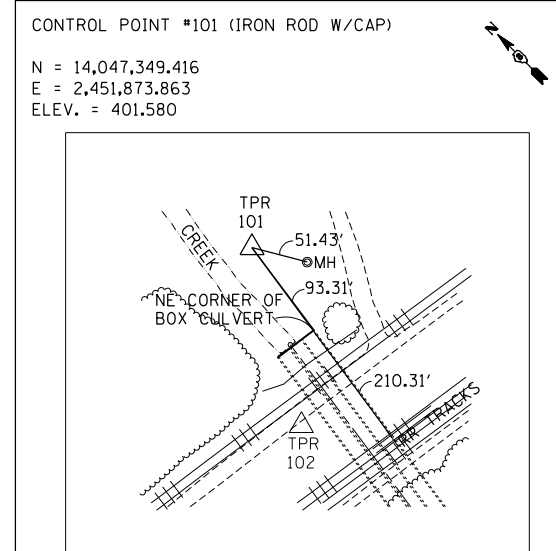
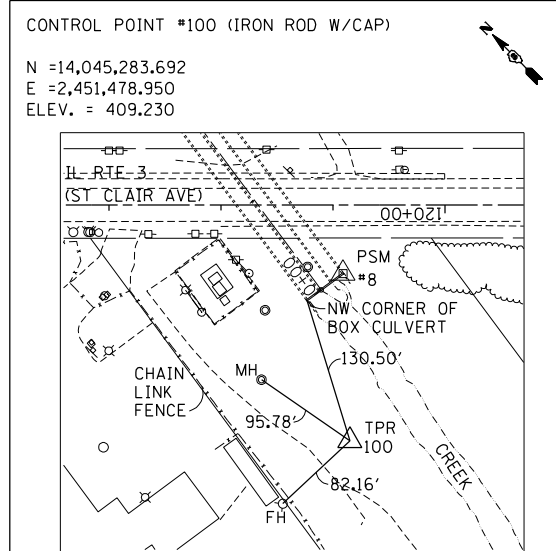


\\DBCONN-99-MOTIFL.DGN, \\DBCONN-99-LAYOUT1.DGN, \\DBCONN-99-ALIGNMENT2.DGN, \\DBCONN-03-GEOMETRICS.DGN, \\DBCONN-03-TOPO.DGN, \\DBCONN-08-MOTIFL.DGN  
 12-17-2012, 14:07:57 BONDHUJO \\FS-004\AM\VAUL.D, TRANS.07\2202\2888-001\CIVIL\CAO\99 ALL CONTRACTS\CONNSHEETS CONTRACT 17\DBCONN-17-SHT-ALIDENTBMS.DGN



FILE NAME =	USER NAME = *USER*	DESIGNED - JB	REVISED -
*FILEL*		DRAWN - JB	REVISED -
	PLOT SCALE = *SCALE*	CHECKED - ACL	REVISED -
	PLOT DATE = *DATE*	DATE - 12/21/12	REVISED -

**STATE OF ILLINOIS**  
**DEPARTMENT OF TRANSPORTATION**  
 I-70 CONNECTION

**ALIGNMENTS, TIES & BENCHMARKS 9**  
 SCALE: N.T.S. SHEET NO. 9 OF 10 SHEETS STA. TO STA.

F.A.P. RTE.	SECTION	COUNTY	TOTAL SHEETS	SHEET NO.
998	82-2-1LS	ST. CLAIR	71	14
CONTRACT NO. 76F39				
FED. ROAD DIST. NO. ILLINOIS FED. AID PROJECT				



TENG & ASSOCIATES, INC.  
 ENGINEERS/ARCHITECTS/PLANNERS  
 CHICAGO, ILLINOIS