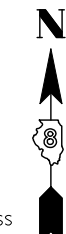


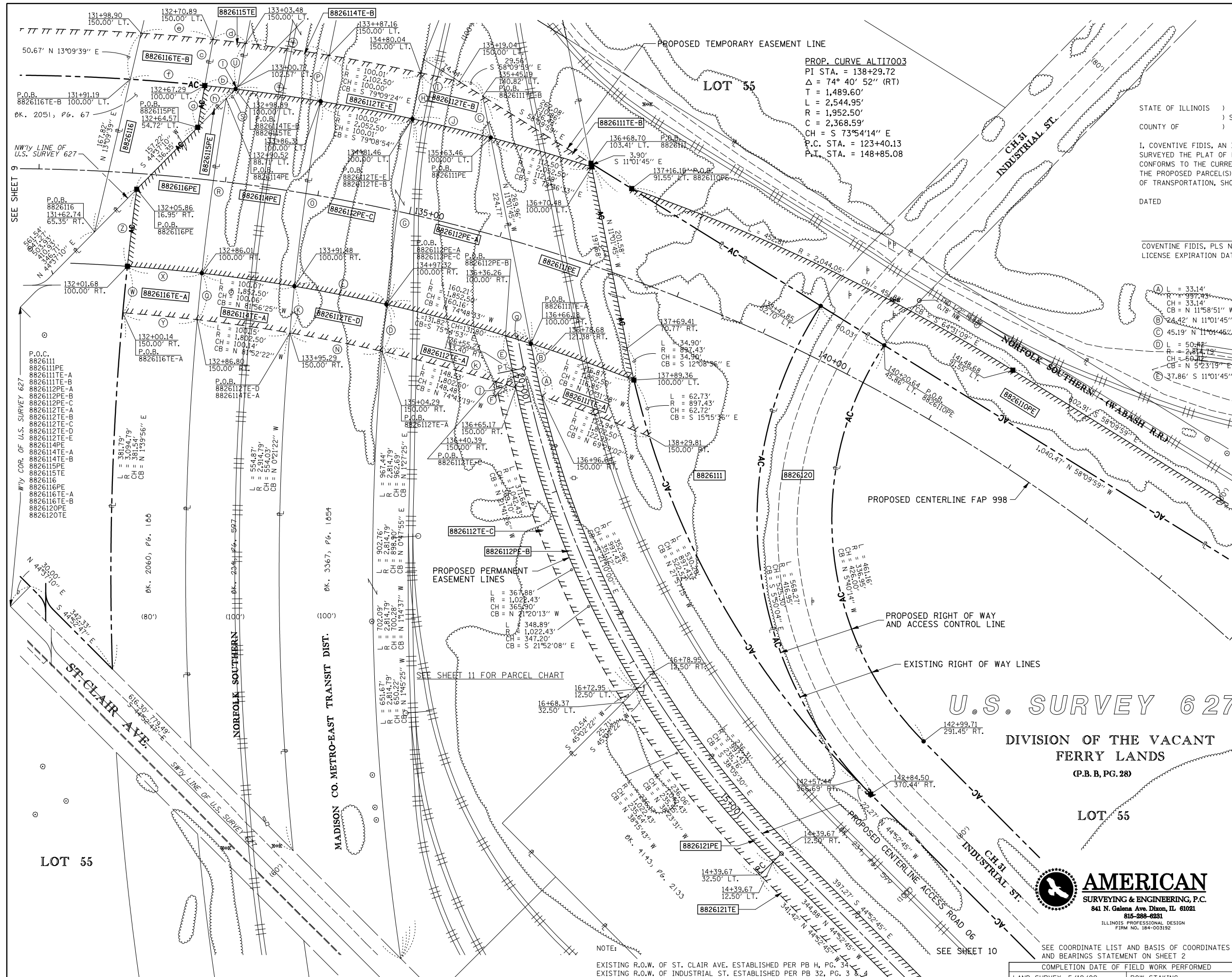
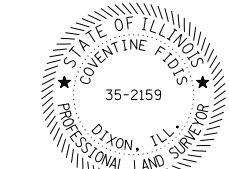
PART OF U.S. SURVEY 627, SECTION 1, T2N, R10W, OF THE 3RD PM, ST. CLAIR COUNTY, ILLINOIS



STATE OF ILLINOIS)
 COUNTY OF) SS

I, COVENTINE FIDIS, AN ILLINOIS PROFESSIONAL LAND SURVEYOR, STATE THAT I HAVE SURVEYED THE PLAT OF HIGHWAY SHOWN HEREON AND THAT THIS PROFESSIONAL SERVICE CONFORMS TO THE CURRENT ILLINOIS MINIMUM STANDARDS FOR A BOUNDARY SURVEY FOR THE PROPOSED PARCEL(S) TO BE ACQUIRED BY THE STATE OF ILLINOIS, DEPARTMENT OF TRANSPORTATION, SHOWN HEREON.

DATED _____
 COVENTINE FIDIS, PLS NO. 35-2159
 LICENSE EXPIRATION DATE: 11/30/2010



- (A) L = 33.14'
R = 997.43'
CH = 33.14'
CB = N 11°58'51" W
- (B) L = 24.42' N 11°01'45" W
R = 2,814.79'
CH = 200.63'
CB = N 7°56'39" E
- (C) L = 50.02'
R = 2,814.79'
CH = 50.02'
CB = N 5°23'19" E
- (D) L = 37.86' S 11°01'45" E
R = 18.99'
CH = 1,022.43'
CB = S 11°33'40" E
- (E) L = 90.11'
R = 2,102.50'
CH = 90.11'
CB = S 81°44'50" E
- (F) L = 50.02'
R = 2,814.79'
CH = 50.02'
CB = N 10°29'45" E
- (G) L = 42.00'
R = 2,102.50'
CH = 42.00'
CB = S 77°13'18" E
- (H) L = 86.20'
R = 2,052.50'
CH = 86.20'
CB = N 5°35'25" W
- (I) L = 50.13'
R = 2,914.79'
CH = 50.13'
CB = N 84°43'30" W
- (J) L = 83.15'
R = 3,094.79'
CH = 83.15'
CB = N 6°53'44" E
- (K) L = 45.37'
R = 3,094.79'
CH = 45.37'
CB = N 9°29'38" E
- (L) L = 33.22'
R = 1,802.50'
CH = 33.22'
CB = S 83°34'25" E
- (M) L = 50.15'
R = 2,314.79'
CH = 50.15'
CB = N 10°23'38" E
- (N) L = 35.10'
R = 2,102.50'
CH = 35.10'
CB = S 84°59'16" E
- (O) L = 77.51'
R = 2,102.50'
CH = 77.51'
CB = S 84°59'16" E
- (P) L = 79.99'
R = 2,052.50'
CH = 79.99'
CB = N 85°09'13" W
- (Q) L = 28.38'
R = 1,802.50'
CH = 28.38'
CB = S 72°46'14" E
- (R) L = 57.65' S 44°37'10" W
R = 1,802.50'
CH = 57.65'
CB = S 75°05'08" E
- (S) L = 3.25' S 44°37'10" W
R = 22.88'
CH = 3.25'
CB = S 72°43'30" E
- (T) L = 125.65'
R = 1,802.50'
CH = 125.65'
CB = S 75°05'08" E

U.S. SURVEY 627
 DIVISION OF THE VACANT FERRY LANDS
 (P.B. B, PG. 28)



ILLINOIS DEPARTMENT OF TRANSPORTATION PLAT OF HIGHWAYS			
FAP ROUTE 998 SECTION 82-2-1HVB ST. CLAIR COUNTY JOB NO. R-98-026-08 STATION 131+00 TO STATION 145+00			
SCALE: 1" = 50'		SHEET 10 OF	
ILLINOIS DEPARTMENT OF TRANSPORTATION DIVISION OF HIGHWAYS/REGION 5/DISTRICT 8 1102 EASTPORT PLAZA DRIVE COLLINSVILLE, ILLINOIS 62234-6198			
F.A.P. RTE.	SECTION	COUNTY	TOTAL SHEETS
	82-2-1LS	ST. CLAIR	71
			59
COMPLETION DATE OF FIELD WORK PERFORMED		CONTRACT NO. 76F39	
LAND SURVEY: 5/19/09	ROW STAKING:	FED. ROAD DIST. NO. ILLINOIS FED. AID PROJECT	