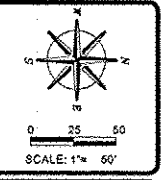


**BENCHMARK INFORMATION**

B.M. "A" - SET R.R. SPIKE IN NORTH FACE OF 1ST. POWER POLE, SOUTH OF BRIDGE, WEST SIDE OF ROAD. ELEV=661.92  
 B.M. "B" - SET R.R. SPIKE IN N.E. FACE OF 1ST. POWER POLE, NORTH OF BRIDGE, WEST SIDE OF ROAD. ELEV=666.00  
 B.M. "C" - FOUND CHISELED "C" ON S.W. HEADWALL OF INDIAN HEAD ROAD BRIDGE OVER GREEN RIVER. ELEV=661.81

FAS ROUTE NO	SEC	COUNTY	TOTAL SHEETS	SHEET NO
188	*	LEE	22	3

ILLINOIS PROJECT BRS-0188(121)  
 \* 08-00303-00-BR



REVISIONS	DATE

DESIGNED BY	
CHECKED BY	
APPROVED BY	
DATE	

**wendler**  
 wendler engineering services, inc.  
 GROUND-BREAKING SOLUTIONS  
 engineers, surveyors, scientists  
 www.wendlereng.com    PK: 315.288.2281  
 Illinois Professional Design Firm No. 184-000648

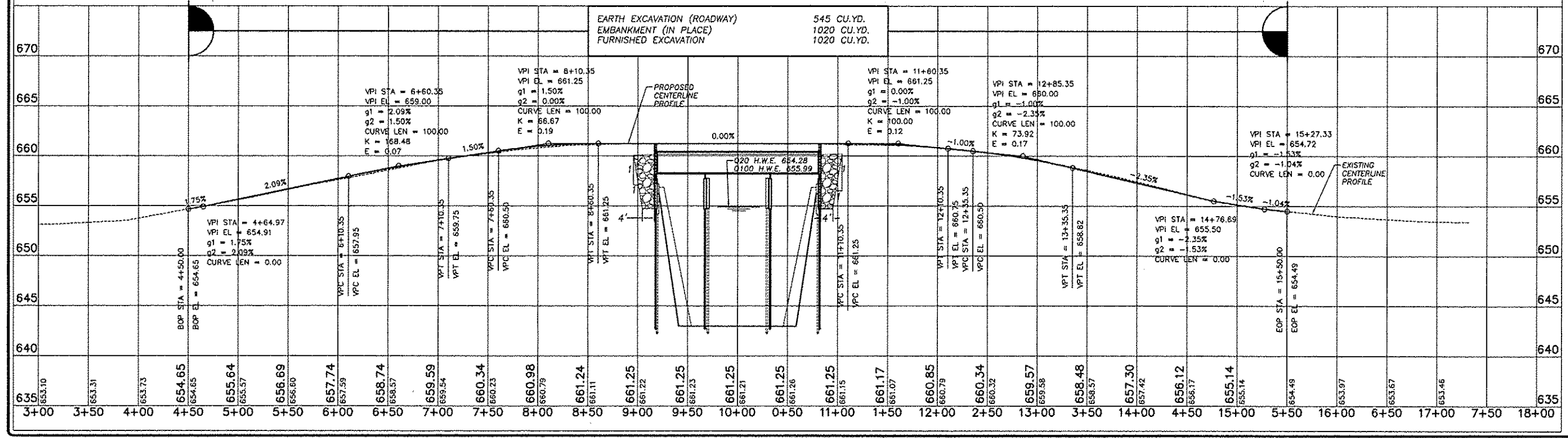
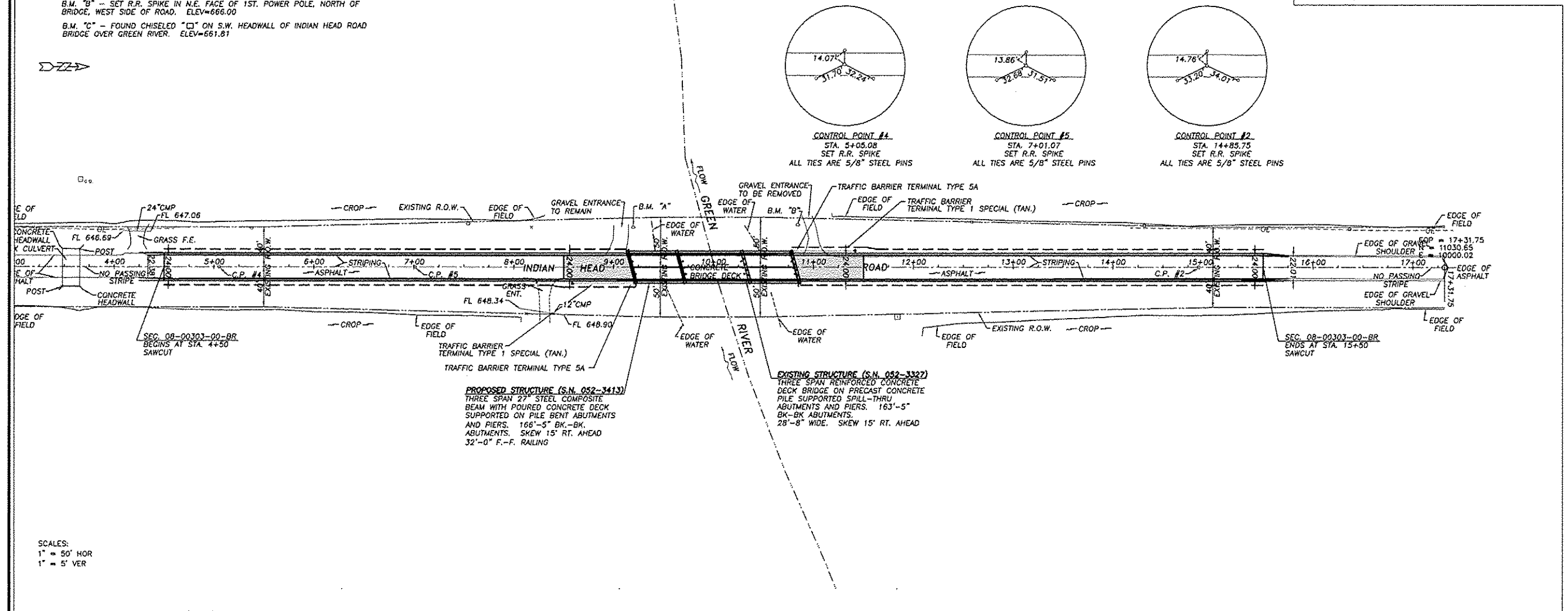
**PLAN AND PROFILE OF INDIANHEAD ROAD BRIDGE FOR LEE COUNTY HIGHWAY DEPARTMENT**

SHEET TITLE  
**PLAN AND PROFILE**

JOB NUMBER  
 2080334

DATE  
 12/13/2012

SHEET NO.  
**3 of 22**



I:\Projects\2012\121312\INDIANHEAD.BRIDGE.DWG