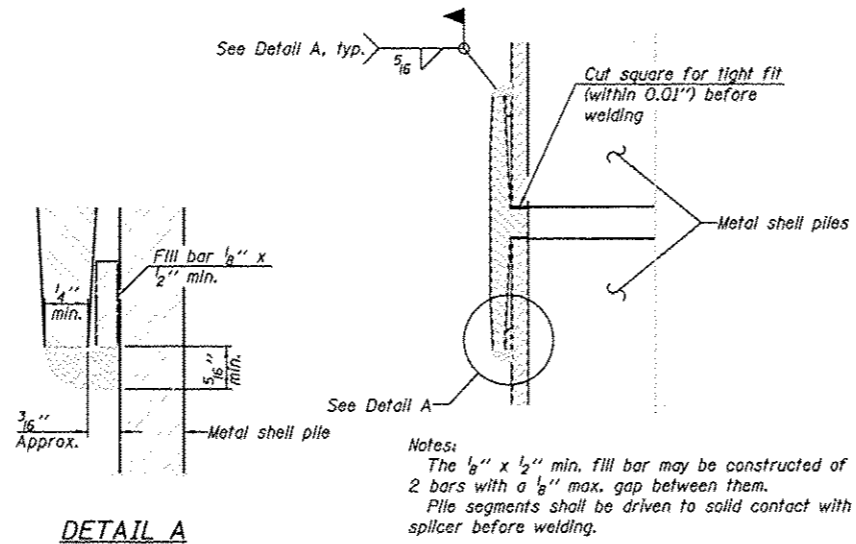


FAS ROUTE NO	SEC	COUNTY	TOTAL SHEETS	SHEET NO
188	*	LEE	22	17
ILLINOIS PROJECT BRS-188(121)				
* 08-00303-00-BR				

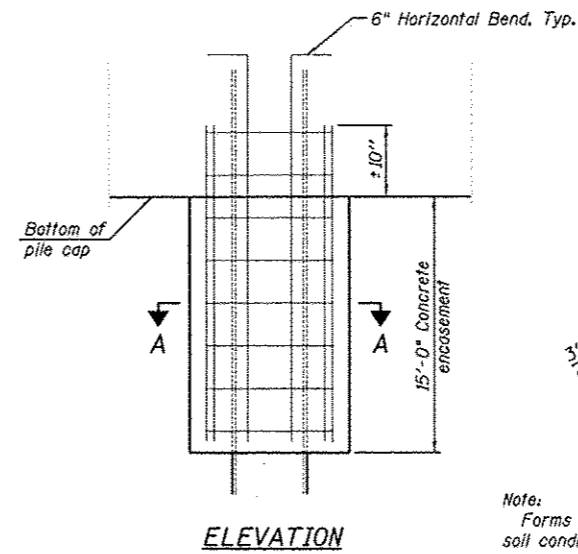


METAL SHELL PILE TABLE

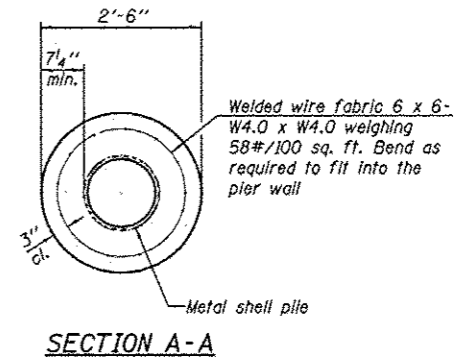
Designation and outside diameter	Wall thickness t	Weight per foot (Lbs./ft.)	Inside volume (yd. <sup>3</sup> /ft.)
PP12	0.179"	22.60	0.0274
PP12	0.250"	31.37	0.0267
PP14	0.250"	36.71	0.0368
PP14	0.312"	45.61	0.0361



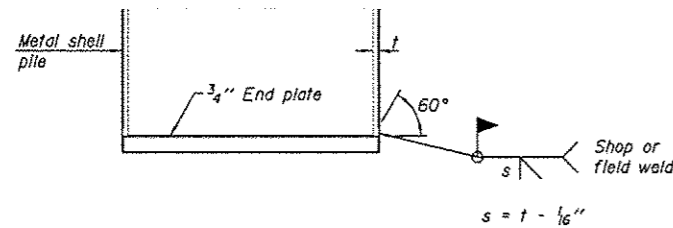
WELDED COMMERCIAL SPLICE



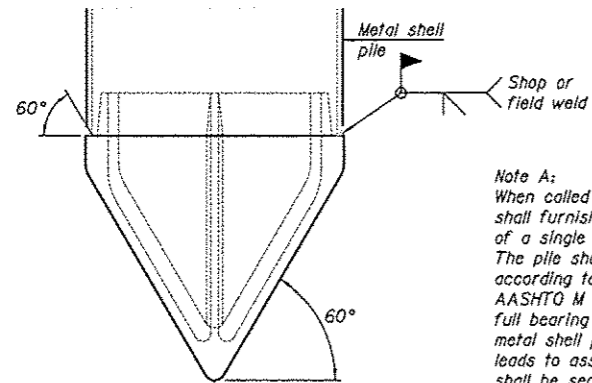
CONCRETE ENCASEMENT AT PIERS



Note:  
Forms for encasement may be omitted when soil conditions permit.



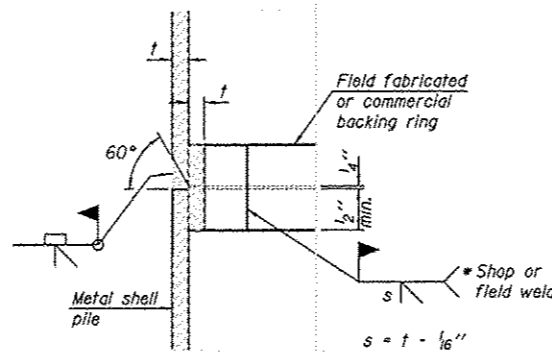
END PLATE ATTACHMENT



METAL SHELL PILE SHOE ATTACHMENT

(See Note A)

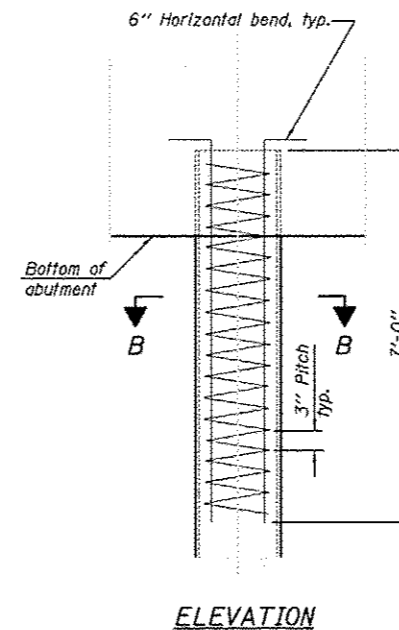
Note A:  
When called for on the plans, the Contractor shall furnish metal shell pile shoes consisting of a single piece conical pile point as shown. The pile shoes shall be cast in one piece steel according to either ASTM A 148 Grade 90-60 or AASHTO M 103 Grade 65-35 and shall provide full bearing over the full circumference of the metal shell pile. The pile shoe shall have tapered leads to assure proper alignment and fitting and shall be secured to the pile with a circumferential weld.



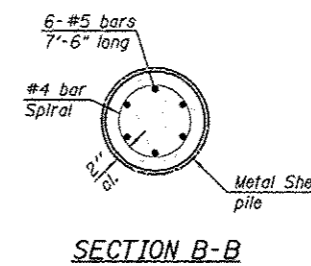
COMPLETE PENETRATION WELD SPLICE

\* Field fabricated backing ring may be made from pile shell by removing segment to allow reducing circumference and vertically rejoin with partial joint penetration weld.

Note:  
The metal shell piles shall be according to ASTM A 252 Grade 3.



METAL SHELL REINFORCEMENT AT ABUTMENTS



DESIGNED:	DB
DRAWN:	BEH
CHECKED:	
DATE:	

F-MS 1-27-12

SCALE: 1"=

REVISIONS	DATE

DESIGNED BY	DB
DRAWN BY	BEH
CHECKED BY	
DATE	

**wendler**  
 wendler engineering services, inc.  
 ENGINEERING SOLUTIONS  
 engineers - architects - scientists  
 www.wendlergs.com Ph: 313.288.2261  
 1800 Professional Design Firm No. 114600049

PILING DETAILS OF INDIAN HEAD ROAD BRIDGE REPLACEMENT FOR LEE COUNTY HIGHWAY DEPARTMENT

SHEET TITLE

PILING DETAILS

JOB NUMBER  
2080334

DATE  
12/13/2012

SHEET NO.

17 of 22

PILING DETAILS  
 SECTION 08-00303-00-BR  
 F.A.S. 188 (INDIAN HEAD RD.)  
 LEE COUNTY  
 S.N. 052-3413