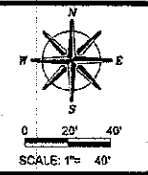


Point modified for clarity
2/22/13

TWP. RT. NO.	SEC.	COUNTY	TOTAL SHEETS	SHEET NO.
61	*	DEKALB	18	3

ILLINOIS PROJECT BROS-C037(051)
* 08-18121-00-BR
CONTRACT NO. 87467



DATE	REVISIONS

DESIGNED BY	CHECKED BY	DATE

wendler
GROUND-BREAKING SOLUTIONS
engineers - surveyors - scientists
www.wendler.com ph: 815.246.2261
Ill. Prof. Reg. No. 184-008643

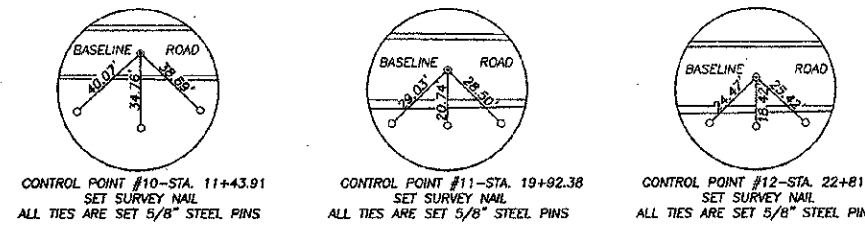
PLAN AND PROFILE
OF
BASELINE ROAD BRIDGE PROJECT
FOR
DEKALB COUNTY HIGHWAY

SHEET TITLE
PLAN & PROFILE

JOB NUMBER
2080382

DATE
12/14/2012

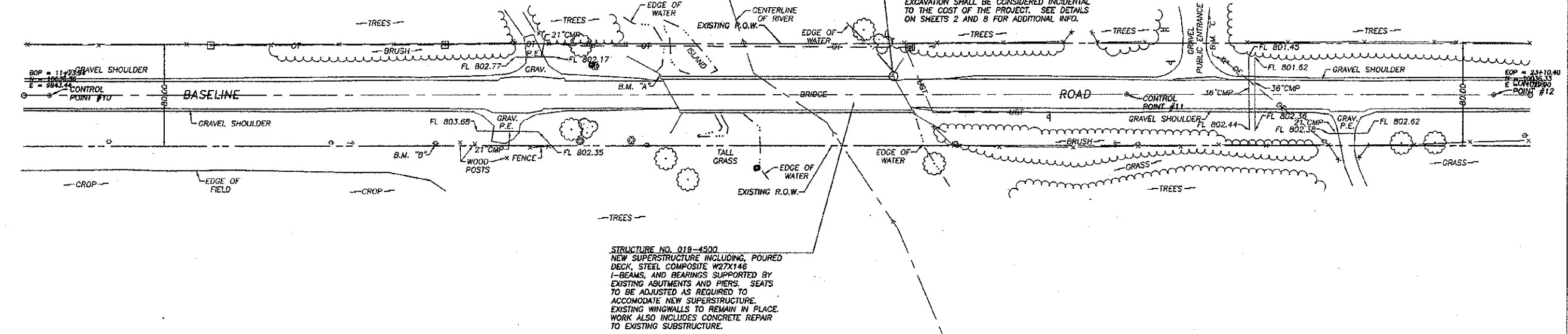
SHEET NO.
3 of 18



CONTROL POINT #10 - STA. 11+43.91
SET SURVEY NAIL
ALL TIES ARE SET 5/8" STEEL PINS

CONTROL POINT #11 - STA. 19+92.38
SET SURVEY NAIL
ALL TIES ARE SET 5/8" STEEL PINS

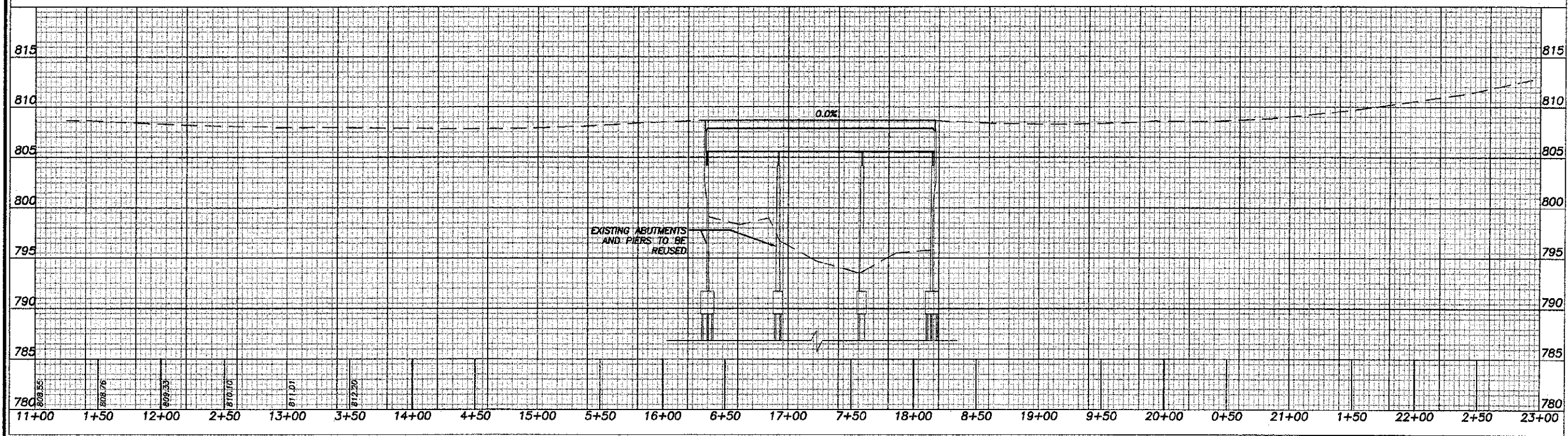
CONTROL POINT #12 - STA. 22+81.63
SET SURVEY NAIL
ALL TIES ARE SET 5/8" STEEL PINS



EXCAVATION WILL BE REQUIRED AT FOUR CORNERS FOR STRUCTURAL REPAIR OF CONCRETE AND BACKWALL/WINGWALL MODIFICATIONS AND AT END OF EXISTING DECK. ALL COSTS ASSOCIATED WITH EXCAVATION SHALL BE CONSIDERED INCIDENTAL TO THE COST OF THE PROJECT. SEE DETAILS ON SHEETS 2 AND 8 FOR ADDITIONAL INFO.

STRUCTURE NO. 019-4500
NEW SUPERSTRUCTURE INCLUDING, POURED DECK, STEEL COMPOSITE W27X146 I-BEAMS, AND BEARINGS SUPPORTED BY EXISTING ABUTMENTS AND PIERS. SEATS TO BE ADJUSTED AS REQUIRED TO ACCOMMODATE NEW SUPERSTRUCTURE. EXISTING WINGWALLS TO REMAIN IN PLACE. WORK ALSO INCLUDES CONCRETE REPAIR TO EXISTING SUBSTRUCTURE.

SCALES:
1" = 40' HOR
1" = 5' VER



11/14/2012 10:00 AM