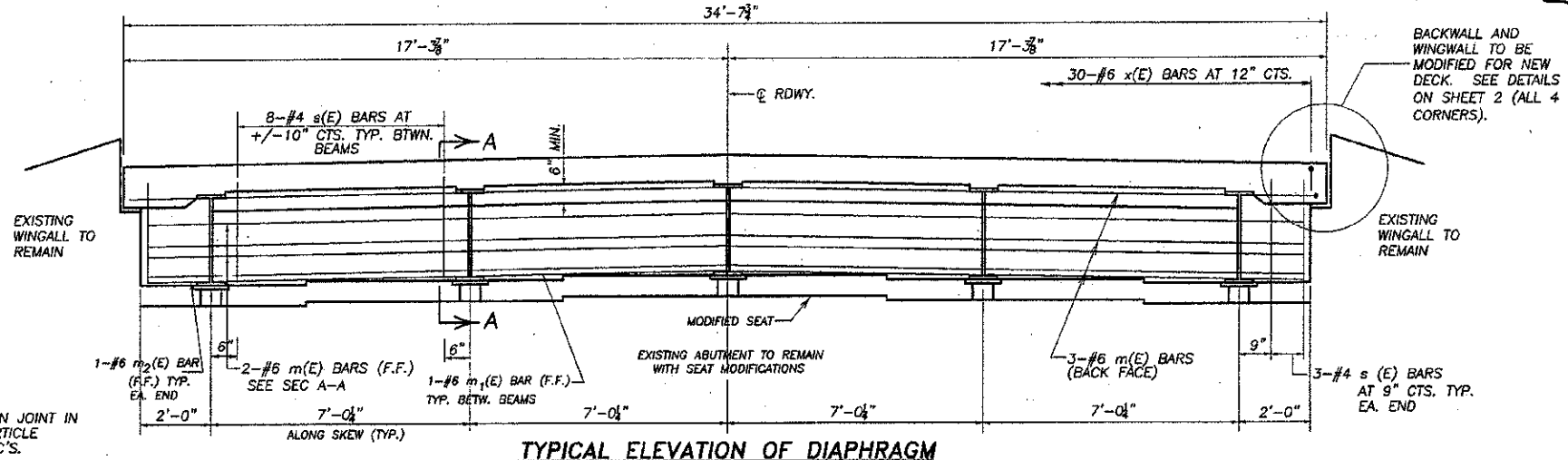


Print modified for clarity
212213

TWP. NO.	SEC.	COUNTY	TOTAL SHEETS	SHEET NO.
61	*	DEKALB	18	8

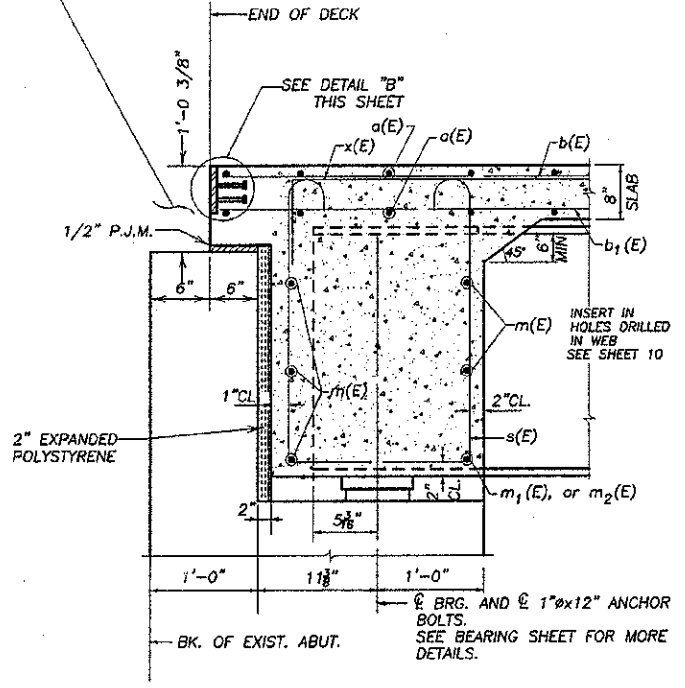
ILLINOIS PROJECT BRD-0037(051)
* 08-18121-00-BR
CONTRACT NO. 87267



**BONDED CONSTRUCTION JOINT IN ACCORDANCE WITH ARTICLE 503.09 OF STD. SPEC'S.

TYPICAL ELEVATION OF DIAPHRAGM

NOTE: PAVEMENT REMOVED TO ALLOW FOR CONSTRUCTION OF NEW BRIDGE SUPERSTRUCTURE SHALL BE REPLACED IN LIKE KIND WITH COSTS BEING INCIDENTAL TO THE COST OF THE PROJECT.



SECTION A-A

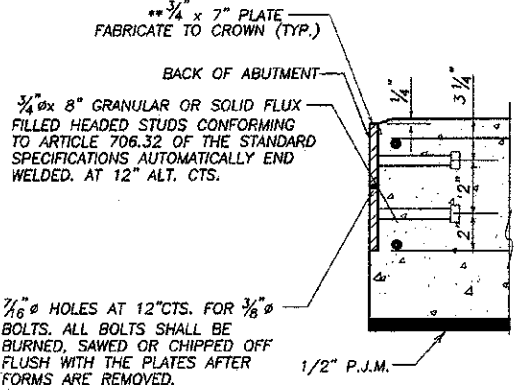
DIM. @ RIGHT ANGLES TO ABUT.

BEAM MOMENT TABLE

	THREE SPAN UNIT		
	0.4 SPAN 1 0.6 SPAN 3	PIER 1 OR 2	0.5 SPAN 2
I_s (in ⁴)	5660	5660	5660
I_c (in ⁴)(n)	15173	0	15173
I_c (in ⁴)(3n)	11380	0	11380
S_s (in ³)	414	414	414
S_c (in ³)(n)	599	0	599
S_c (in ³)(3n)	546	0	546
DC1 (k/ft.)	0.78	0.78	0.78
MDC1 (ft.-k)	182	-294	135
DC2 (k/ft.)	0.025	0.025	0.025
MDC2 (ft.-k)	6	-9	5
DW (k/ft.)	0.3	0.3	0.3
MDW (ft.-k)	76	-104	64
MLL+M (ft.-k)	572	-365	548
M_u (Str. I)(ft.-k)	1352	-1208	1231
$\phi_f M_n$ (ft.-k)	2850	1487	2852
f_s DC1 (ksi)	5.5	8.5	4.0
f_s DC2 (ksi)	0.2	0.3	0.2
f_s DW (ksi)	1.7	3.0	1.4
f_s 1.3(LL+M)(ksi)	14.95	11.2	14.3
f_s (Service II)(ksi)	22.35	23.0	19.9
V_f (k)	15	24	16

BAR s(E)

BAR s1(E)



DETAIL "B"

NOTE: AFTER FABRICATION ALL SURFACES OF THE STEEL PLATES SHALL BE GIVEN ONE SHOP COAT OF PAINT SPECIFIED FOR STRUCTURAL STEEL. NO FIELD PAINTING REQUIRED.

BILL OF MATERIAL - SUPERSTRUCTURE

BAR	NO.	SIZE	LENGTH	SHAPE
a(E)	539	#5	29'-8"	
a1(E)	316	#6	9'-8"	
m(E)	10	#6	31'-9"	
m1(E)	8	#6	6'-8"	
m2(E)	4	#6	1'-8"	
b(E)	186	#5	32'-7"	
b1(E)	224	#5	28'-3"	
b2(E)	60	#6	21'-4"	
s(E)	76	#4	7'-10"	
s1(E)	164	#4	4'-1"	
p(E)	60	#6	6'-8"	
x(E)	60	#6	6'-3"	
CONCRETE SUPERSTRUCTURE			CU. YD.	145.5
REINFORCEMENT BARS EPOXY COATED			LBS.	38690
PROTECTIVE COAT **			SQ. YD.	665.5
BRIDGE DECK GROOVING			SQ. YD.	611.2

REINFORCEMENT BARS INDICATED (E) SHALL BE EPOXY COATED. SEE SHEET 7 OF 12 FOR SUPERSTRUCTURE DETAILS

** INCLUDES TOP OF DECK AND EDGES TO THE DRIP NOTCH.

BEAM REACTION TABLE

	ABUTMENTS	PIER
R_{DC1} (k)	17.3	53.5
R_{DC2} (k)	0.7	1.5
R_{DW} (k)	7	20
R_{L+M} (k)	73	92
R_{TOTAL} (k)	98	167

DESIGNED:	RLR
DRAWN:	BDS
CHECKED:	
DATE:	

REVISIONS	
NO.	DATE

APPROVED BY:	DATE:
RLR	
BDS	
ZACHAROVICH	
DIEL	
MURPHY	
BOOKER	

SCALE:	1" =
--------	------

wendler
GROUND-BREAKING SOLUTIONS
engineers - surveyors - scientists
www.wendlergs.com ph: 815.298.2381
Illinois Professional Design Firm No. 154-000268

SUPERSTRUCTURE DETAILS
OF
BASE LINE ROAD BRIDGE PROJECT
FOR
DEKALB COUNTY HIGHWAY

SHEET TITLE
SUPER
STRUCTURE
DETAIL

JOB NUMBER
2080382
DATE
12/14/2012

SHEET NO.
8 of 18

SUPERSTRUCTURE DETAILS
SECTION 08-18121-00-BR
DEKALB COUNTY
S.N. 019-4500