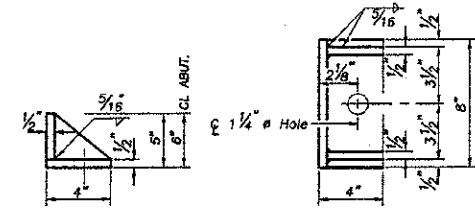


2/22/13 *Print modified for clarity.*

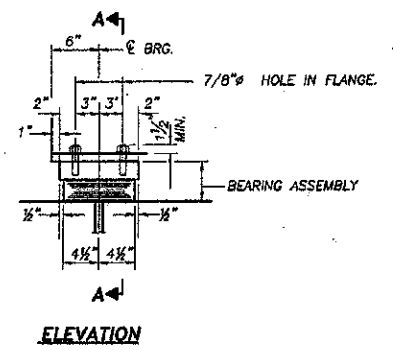
TWP. RTE. NO.	SEC.	COUNTY	TOTAL SHEETS	SHEET NO.
61	*	DEKALB	18	10

ILLINOIS PROJECT BR08-0937(051)  
 \* 08-18121-00-BR  
 CONTRACT NO. 67467

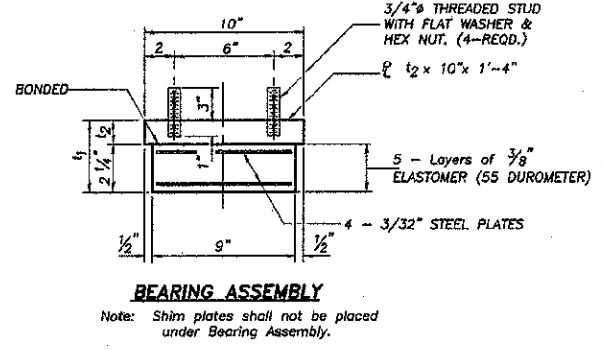


**SIDE RETAINER - TYPE A**  
 Equivalent rolled angle with stiffeners will be allowed in lieu of welded plates.  
 (30 REQUIRED)

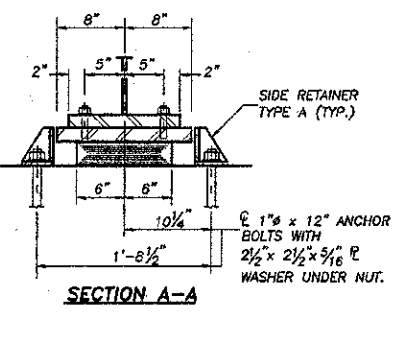
NOTE: THE STRUCTURAL STEEL BEARING PLATES OF THE ELASTOMERIC BEARING ASSEMBLY SHALL CONFORM TO THE REQUIREMENTS OF AASHTO M270 GRADE 50.



ELEVATION

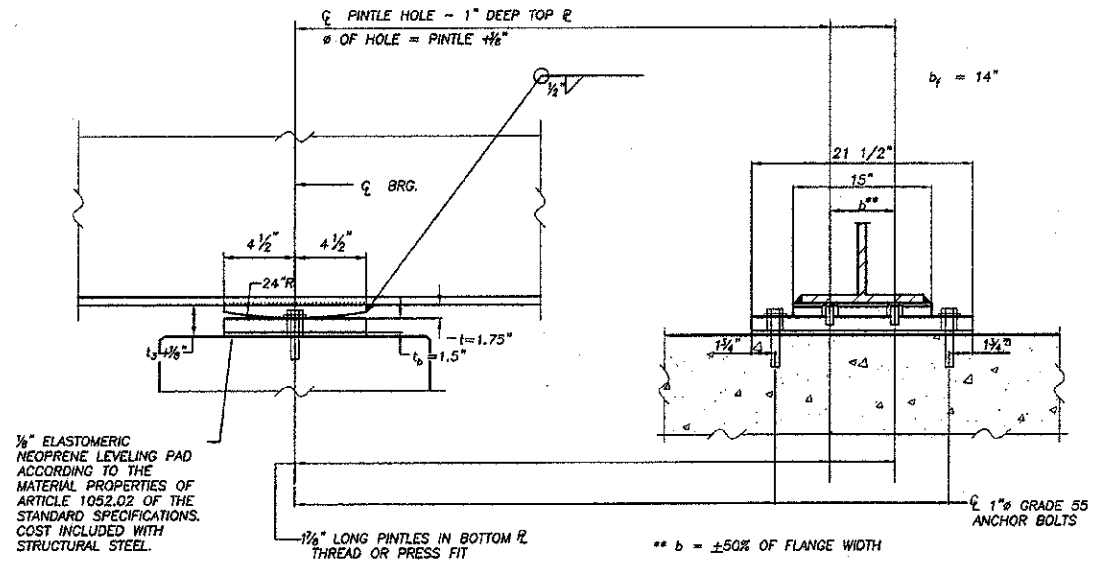


BEARING ASSEMBLY

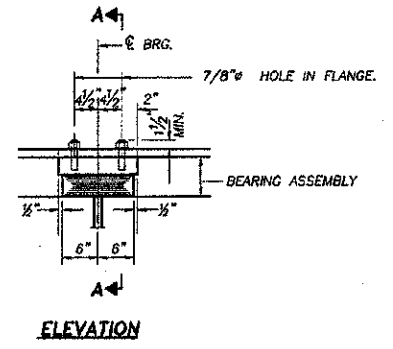


SECTION A-A

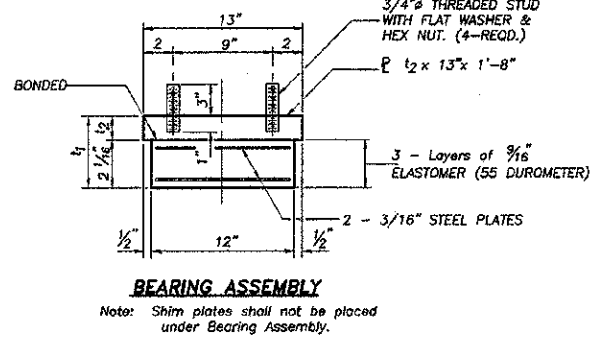
**TYPE I ELASTOMERIC EXPANSION BRG. - WEST ABUT.**  
 (5 REQUIRED)



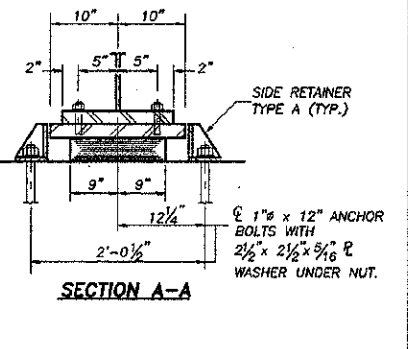
**FIXED BEARING ASSEMBLY - WEST PIER**  
 (QUANTITY INCLUDED IN WEIGHTS OF STRUCTURAL STEEL)



ELEVATION



BEARING ASSEMBLY



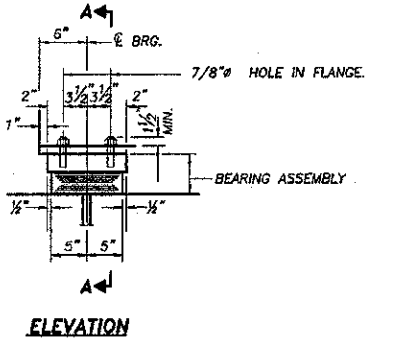
SECTION A-A

**TYPE I ELASTOMERIC EXPANSION BRG. - EAST PIER**  
 (5 REQUIRED)

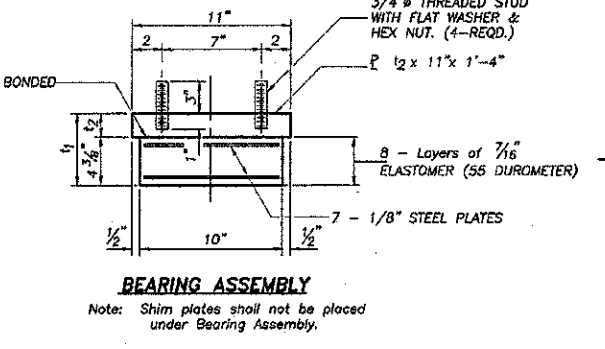
BEAM LINE	W. ABUT.		W. PIER		E. PIER		E. ABUT.	
	t <sub>1</sub> *	t <sub>2</sub>	t <sub>3</sub> *	t <sub>1</sub> *	t <sub>2</sub>	t <sub>1</sub> *	t <sub>2</sub>	
① NORTH	4"	1 3/4"	3 3/8"	4 9/16"	2 1/2"	6 1/8"	1 3/4"	
②	4"	1 3/4"	3 3/8"	4 9/16"	2 1/2"	6 1/8"	1 3/4"	
③	4"	1 3/4"	3 3/8"	4 9/16"	2 1/2"	6 1/8"	1 3/4"	
④	4"	1 3/4"	3 3/8"	4 9/16"	2 1/2"	6 1/8"	1 3/4"	
⑤ SOUTH	4"	1 3/4"	3 3/8"	4 9/16"	2 1/2"	6 1/8"	1 3/4"	

\* THICKNESS MAY BE MADE UP OF 2" MINIMUM PLATES FULL PERIMETER SHOP WELD ON ALL PLATES

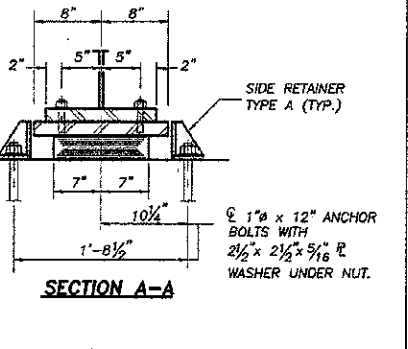
DESIGNED:	RLR
DRAWN:	BDS
CHECKED:	
DATE:	



ELEVATION



BEARING ASSEMBLY



SECTION A-A

**TYPE I ELASTOMERIC EXPANSION BRG. - EAST ABUT.**  
 (5 REQUIRED)

BILL OF MATERIAL

ITEM	UNIT	TOTAL
Elastomeric Bearing Assembly Type 1	EACH	15

**BEARING DETAILS**  
 SECTION 08-18121-00-BR  
 BASE LINE ROAD BRIDGE  
 DEKALB COUNTY  
 SN 019-4500

REVISIONS	DATE	BY	CHKD

**wendler**  
 CONSULTING SOLUTIONS  
 ENGINEERS, SURVEYORS & SCIENTISTS  
 www.wendlerinc.com  
 Illinois Professional Design Firm No. 164-000648

BEARING DETAILS  
 OF  
 BASE LINE ROAD BRIDGE PROJECT  
 FOR  
 DEKALB COUNTY HIGHWAY

SHEET TITLE  
**BEARING**

JOB NUMBER  
 2080382  
 DATE  
 12/14/2012  
 SHEET NO.  
**10 of 18**