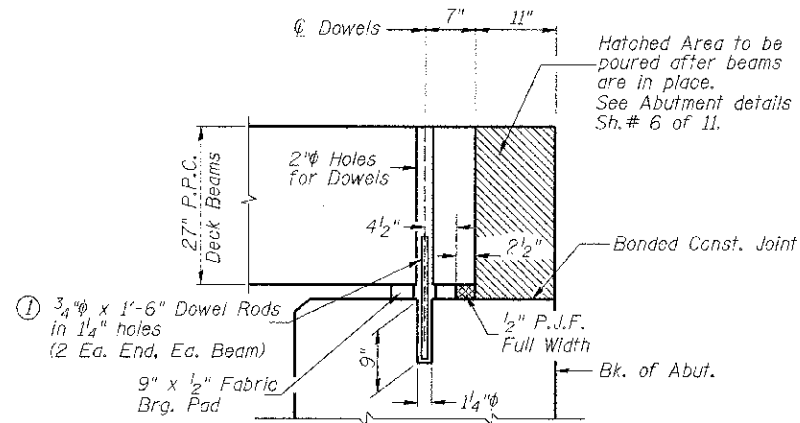


RAIL POST SPACING



SECTION THRU ABUTMENTS

① Dowel Rods to be grouted after beams are in place and allowed to cure (Min. 24 hr.) prior to grouting the shear keys.

RAIL POST SPACING AND
SUPERSTRUCTURE DETAILS
BUREAU COUNTY
SECTION 07-03126-00-BR
T.R. 109 OVER WEST BUREAU CREEK

SHEET NO. 5	ROUTE NO.	SECTION	COUNTY	TOTAL SHEETS	SHEET NO.
11 SHEETS	TR 109	07-03126-00-BR	BUREAU	61	18
	S.N. 006-4553		CONTRACT NO. 87528		
	FED. ROAD DIST. NO. 7 ILLINOIS		FED. AID PROJECT BR05-001(K097)		