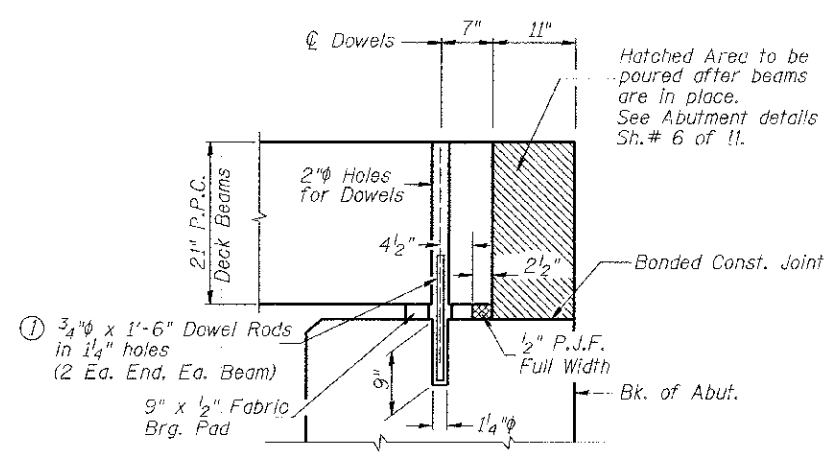


RAIL POST SPACING



SECTION THRU ABUTMENTS

① Dowel Rods to be grouted after beams are in place and allowed to cure (Min. 24 hr.) prior to grouting the shear keys.

RAIL POST SPACING AND
SUPERSTRUCTURE DETAILS
BUREAU COUNTY
SECTION 07-03126-00-BR
T.R. 109 OVER LIME CREEK TRIBUTARY

SHEET NO. 5 11 SHEETS	ROUTE NO.	SECTION	COUNTY	TOTAL SHEETS	SHEET NO.
	TR 109	07-03126-00-BR	BUREAU	61	29
	S.N. 006-4088		CONTRACT NO. 87528		
FED. ROAD DIST. NO. 7		ILLINOIS	FED. AID PROJECT BR05-001(087)		