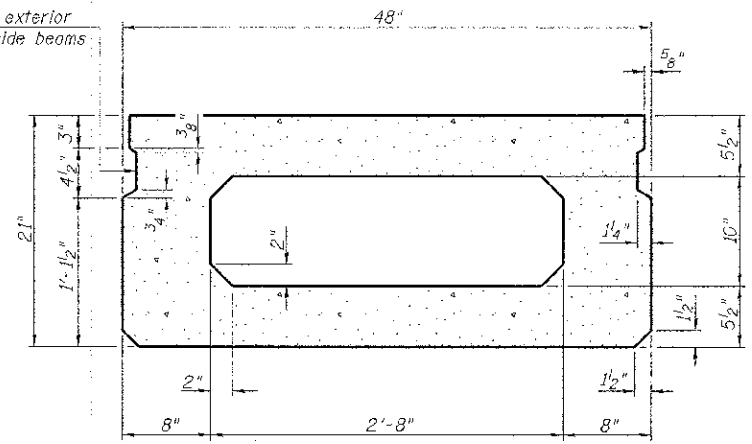
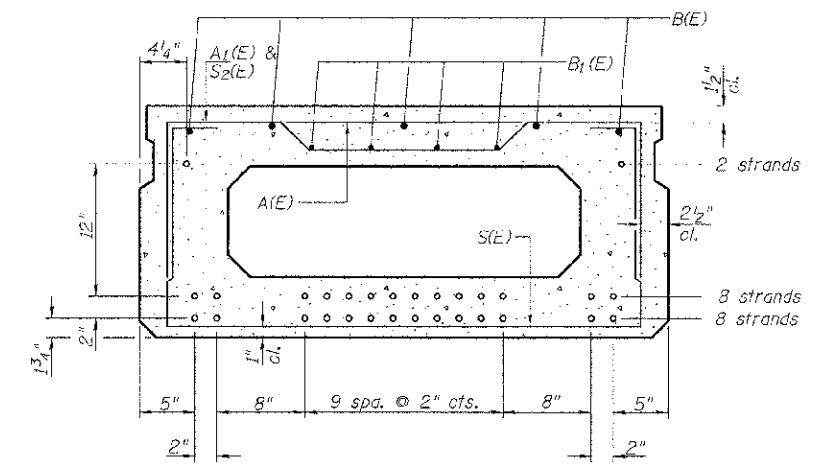


SECTION C-C

**Omit key on exterior face of outside beams

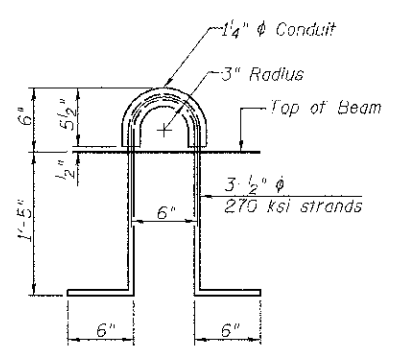


SECTION A-A
(Showing dimensions)



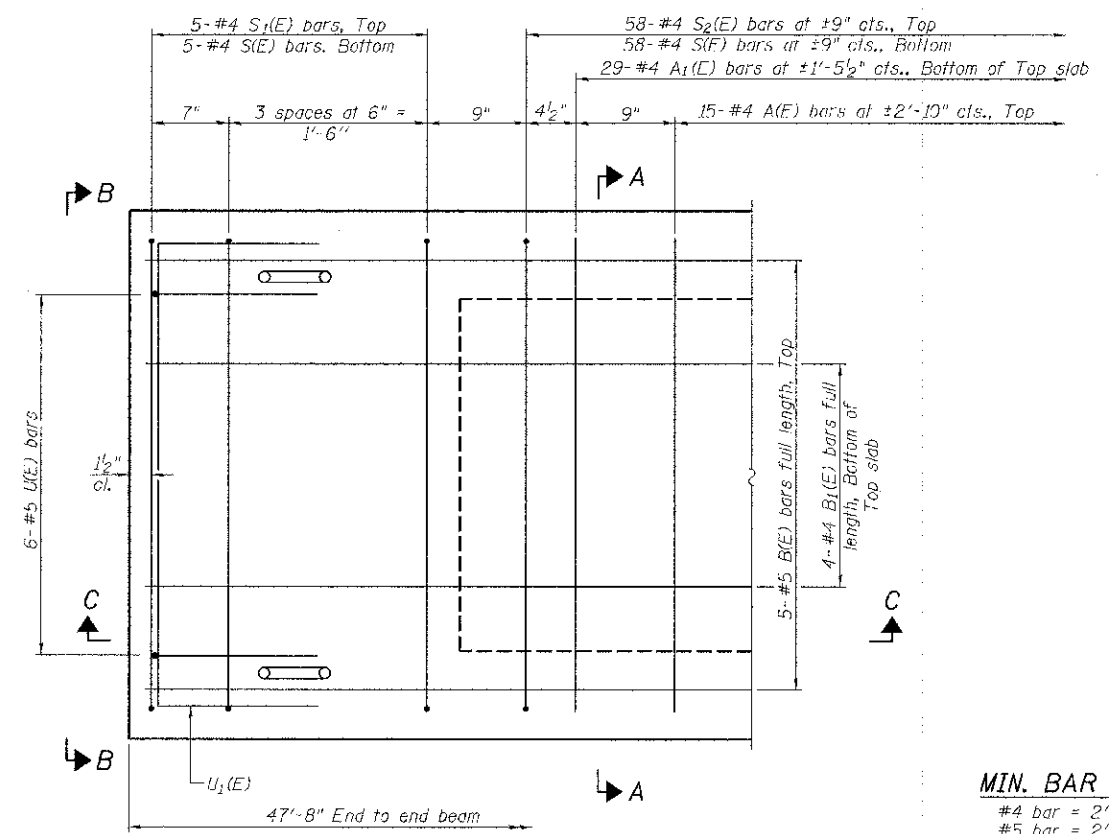
SECTION A-A

18-1/2" Strands Each Strand Stressed to 30,900 Lbs.
 8-Strands 1 3/4" up, 8-Strands 3 3/4" up, 2-Strands 1'-3 3/4"
 Note: Place the number of strands specified in each row symmetrically about the centerline of beam in the permissible strand locations shown.



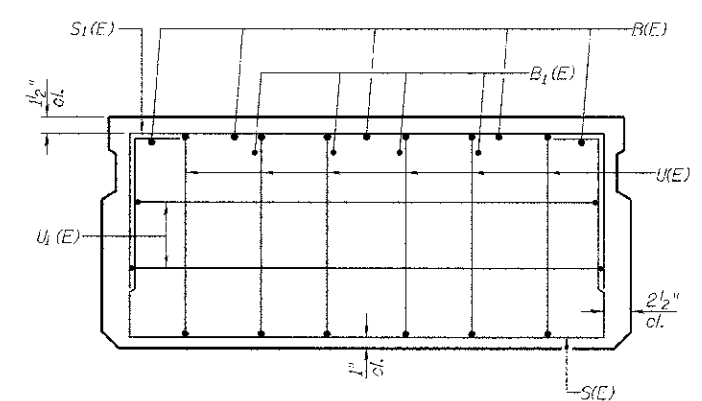
LIFTING LOOP DETAIL

**Rail post anchor devices (Sheet 4 of 11) to be cast into exterior face of outside beams.

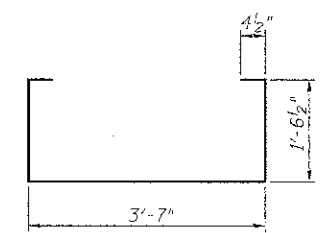


PLAN VIEW

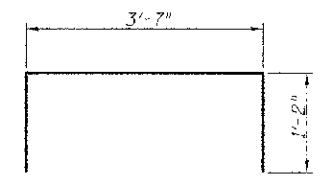
Note: Spacing of S(E) and S2(E) bars may be adjusted up to 4" in the immediate area of the transverse tie diaphragms to miss the block outs for the transverse ties.



VIEW B-B

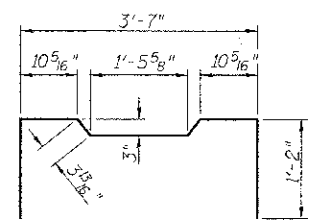


BAR S(E)

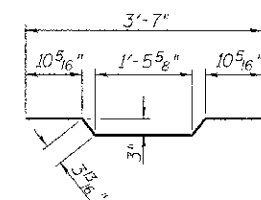


BAR S1(E)

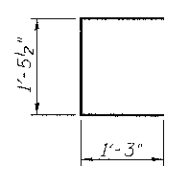
MIN. BAR LAP
 #4 bar = 2'-0"
 #5 bar = 2'-6"



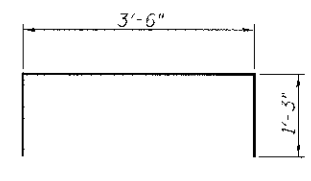
BAR S2(E)



BAR A1(E)



BAR U(E)



BAR U1(E)

BAR LIST-ONE BEAM ONLY
(For Information Only)

BAR NO.	NO.	SIZE	LENGTH	SHAPE
A(E)	15	#4	3'-7"	—
A1(E)	29	#4	3'-10"	—
B(E)	5	#5	*4'-5"	—
B1(E)	4	#4	*4'-5"	—
S(E)	58	#4	7'-5"	□
S1(E)	10	#4	5'-11"	□
S2(E)	58	#4	6'-2"	□
U(E)	12	#5	4'-0"	□
U1(E)	4	#4	6'-0"	□

* Total Length, Lap as necessary

Note: See sheet 2 of 11 for additional details and Bill of Material.

SUPERSTRUCTURE DETAILS
BUREAU COUNTY
SECTION 07-03126-00-BR
T.R. 109 OVER LIME CREEK TRIBUTARY

SHEET NO. 3 11 SHEETS	ROUTE NO.	SECTION	COUNTY	TOTAL SHEETS	SHEET NO.
	TR 109	07-03126-00-BR	BUREAU	61	38
	S.N. 006-4089		CONTRACT NO. 87528		
FED. ROAD DIST. NO. 7 ILLINOIS		FED. AID PROJECT BR05-0011(087)			