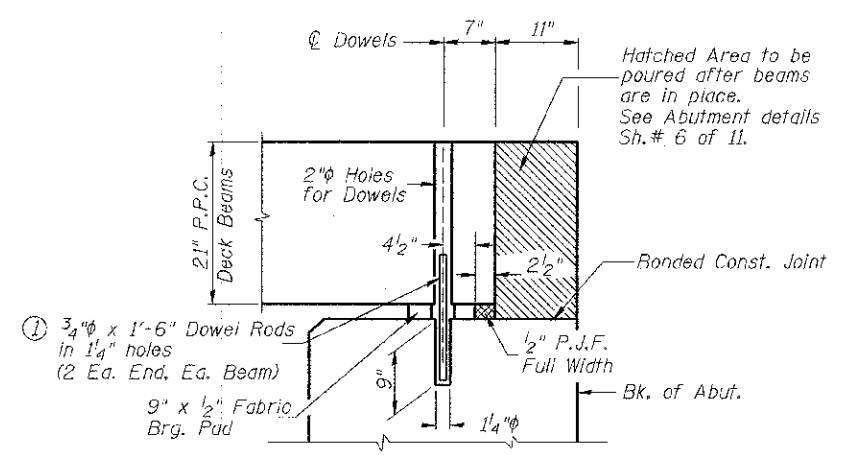


RAIL POST SPACING



SECTION THRU ABUTMENTS

① Dowel Rods to be grouted after beams are in place and allowed to cure (Min. 24 hr.) prior to grouting the shear keys.

**RAIL POST SPACING AND
SUPERSTRUCTURE DETAILS
BUREAU COUNTY
SECTION 07-03126-00-BR
T.R. 109 OVER LIME CREEK TRIBUTARY**

SHEET NO. 5 11 SHEETS	ROUTE NO.	SECTION	COUNTY	TOTAL SHEETS	SHEET NO.
	TR 109	07-03126-00-BR	BUREAU	61	40
	S.N. 006-4089		CONTRACT NO. 87528		
FED. ROAD DIST. NO. 7 ILLINOIS		FED. AID PROJECT BROS-001(087)			