

INDEX OF SHEETS

- SHEET 1. COVER SHEET
- SHEET 2. TYPICAL CROSS SECTION, SUMMARY OF QUANTITIES, STRUCTURAL DESIGN, BITUMINOUS MIXTURE TABLE
- SHEET 3. TYPICAL ENTRANCE DETAIL, MAILBOX DETAILS, SIDE ROAD RETURN, GENERAL NOTES

STANDARDS

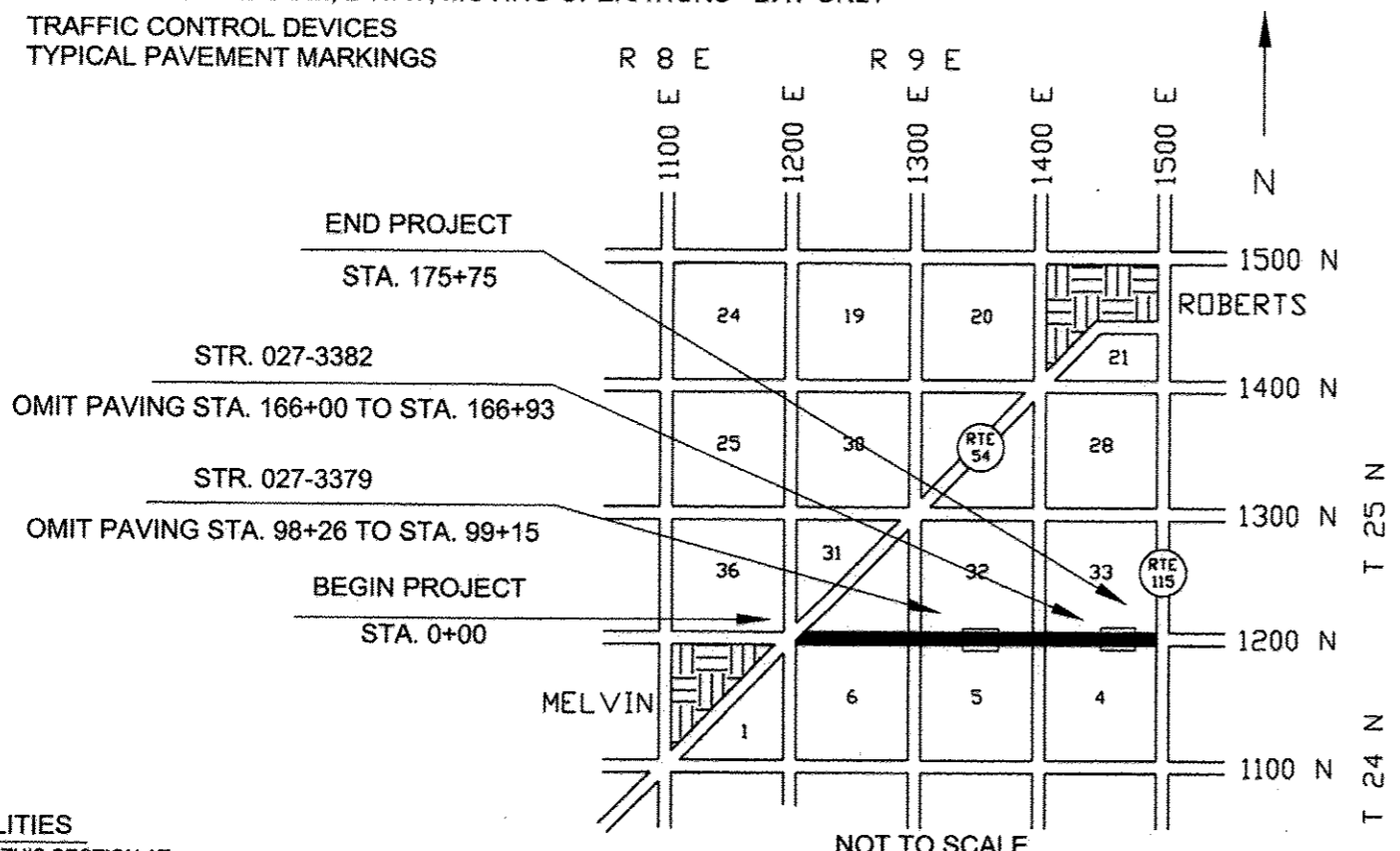
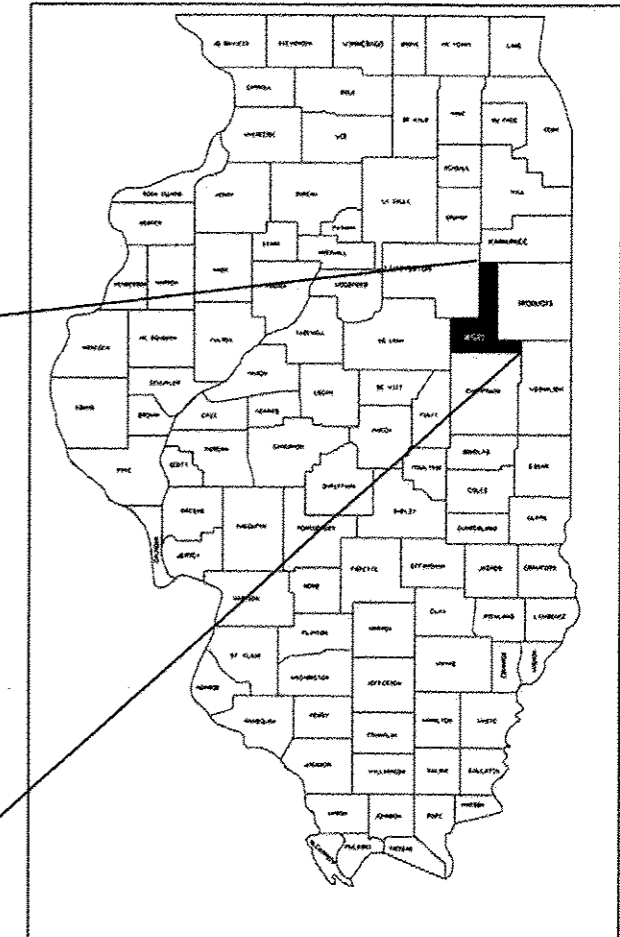
- 701301-04 LANE CLOSURE 2 LANE, 2 WAY, SHORT TIME OPERATIONS
- 701306-03 LANE CLOSURE 2 LANE, 2 WAY, SLOW MOVING OPERATIONS - DAY ONLY FOR SPEEDS \geq 45 MPH
- 701311-03 LANE CLOSURE 2 LANE, 2 WAY, MOVING OPERATIONS - DAY ONLY
- 701901-02 TRAFFIC CONTROL DEVICES
- 780001-03 TYPICAL PAVEMENT MARKINGS

STATE OF ILLINOIS
DEPARTMENT OF TRANSPORTATION
DIVISION OF HIGHWAYS

**PLANS FOR
PROPOSED LOCAL AGENCY IMPROVEMENT
FEDERAL-AID SECONDARY PROJECT**

C.H. 3 (MELVIN - SIBLEY ROAD)
F.A.S. ROUTE 341 SECTION 13-00119-00-RS FORD COUNTY
PROJECT RS- 0341(111)
JOB NO. C-93-095-12

FAS NO.	SECTION	COUNTY	TOTAL SHEETS	SHEET NO.
341	13-00119-00-RS		3	1
PROJECT RS - 0341(111) CONTRACT # 87534				



UTILITIES

UTILITIES ON THIS SECTION AT VARIOUS LOCATIONS INCLUDES TO THE BEST OF OUR KNOWLEDGE:
FRONTIER TELEPHONE COMPANY (UNDERGROUND)
OVERHEAD POWER - EASTERN ILLINI

CONTRACTORS OR SUBCONTRACTORS SHALL CONTACT J.U.L.I.E. (1-800-892-0123) AT LEAST 72 HOURS PRIOR TO ANY EXCAVATION FOR UTILITIES LOCATION

JOB NO. C-93-095-12
CONTRACT NO. 87534

GROSS LENGTH = 17575' = 3.329 MI.
NET LENGTH = 17395' = 3.295 MI.

THE PLANS FOR THIS SECTION WERE PREVIOUSLY APPROVED BY THE DEPARTMENT AS SECTION 17-Q, SECTION 17Q-1, SECTION 91-00069-00-WR & SECTION 92-00071-00-WR
FUNCTIONAL CLASSIFICATION: MAJOR COLLECTOR

Gregory L. Perkinson
ILLINOIS PROFESSIONAL NO. 062-035801

EXPIRES 11-30-2013

CURRENT (2013) ADT = 225 - 88% PC
9% SU
3% MU
DESIGN ADT (2023) = 300
DESIGN SPEED = 50 MPH

THE ACCEPTANCE OF THIS PROJECT IS BASED ON THE MINIMUM DESIGN CRITERIA UNDER 3R GUIDELINES.

APPROVED	<i>December 18, 2012</i> <i>Gregory L. Perkinson</i> FORD COUNTY, COUNTY ENGINEER
PASSED	<i>12-28-12</i> <i>Don R E O</i> DISTRICT 3 ENGINEER OF LOCAL ROADS & STREETS
Releasing for Bid Based on Limited Review	<i>12-28-12</i> <i>Paul [Signature]</i> DEPUTY DIRECTOR OF HIGHWAYS, REGION 2 ENGINEER STATE OF ILLINOIS DEPARTMENT OF TRANSPORTATION

