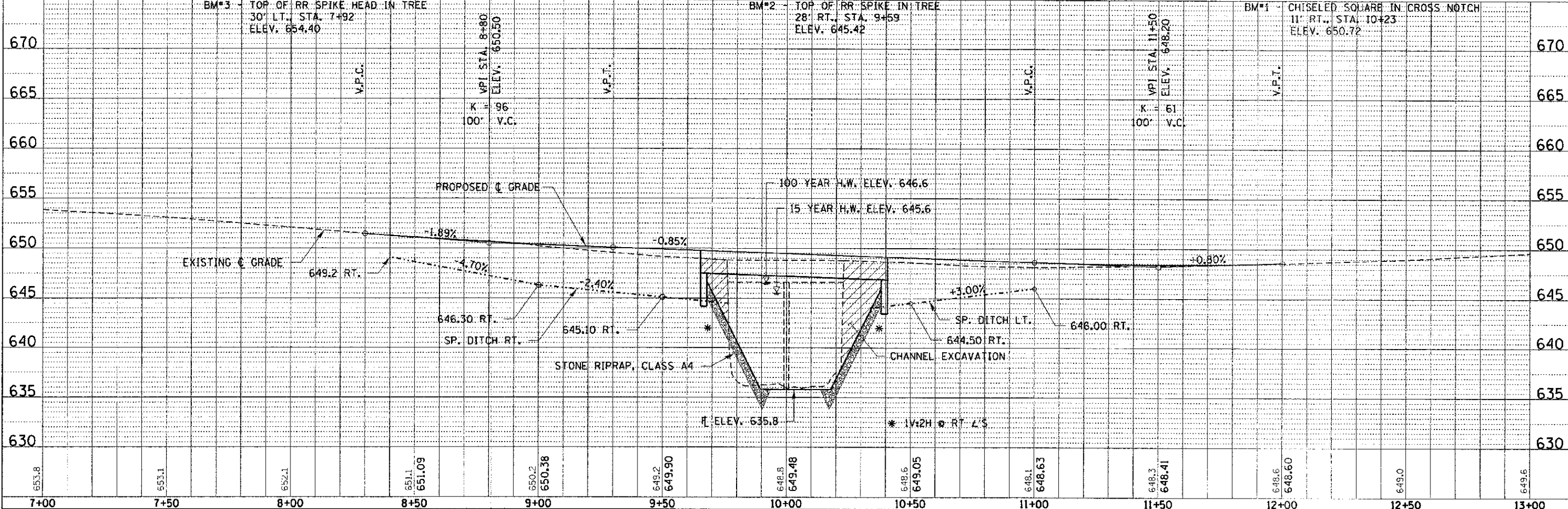
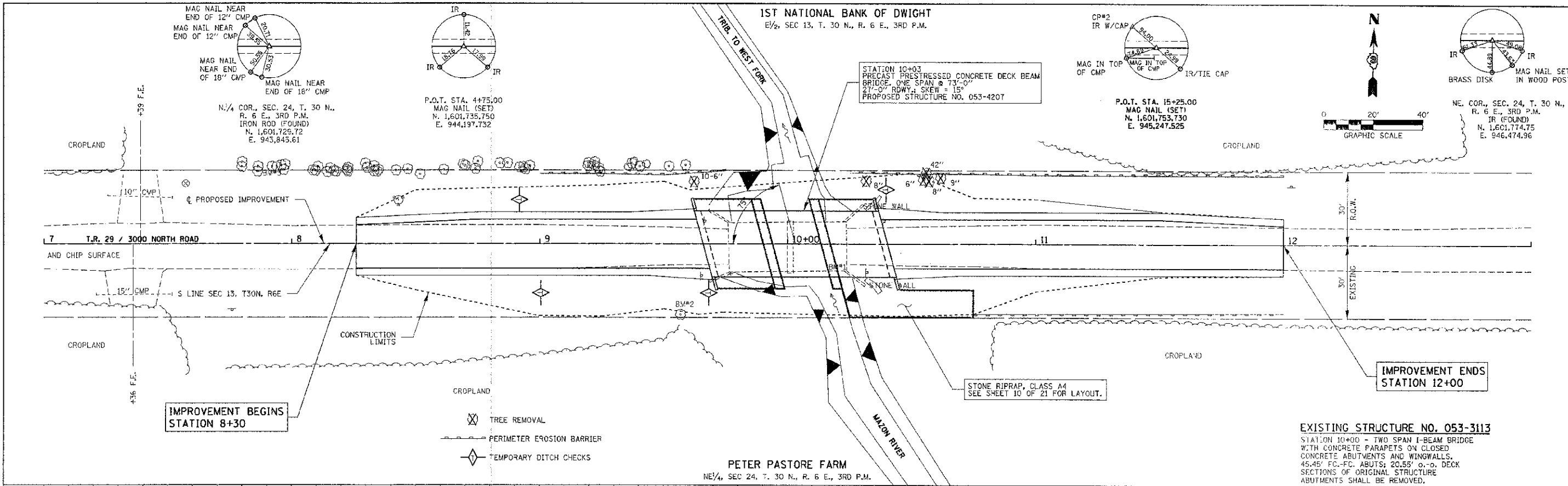


DATE	
BY	
REVISIONS	
NO. 1	
NO. 2	
NO. 3	
NO. 4	
NO. 5	
NO. 6	
NO. 7	
NO. 8	
NO. 9	
NO. 10	
NO. 11	
NO. 12	
NO. 13	
NO. 14	
NO. 15	
NO. 16	
NO. 17	
NO. 18	
NO. 19	
NO. 20	
NO. 21	
NO. 22	
NO. 23	
NO. 24	
NO. 25	
NO. 26	
NO. 27	
NO. 28	
NO. 29	
NO. 30	
NO. 31	
NO. 32	
NO. 33	
NO. 34	
NO. 35	
NO. 36	
NO. 37	
NO. 38	
NO. 39	
NO. 40	
NO. 41	
NO. 42	
NO. 43	
NO. 44	
NO. 45	
NO. 46	
NO. 47	
NO. 48	
NO. 49	
NO. 50	

DATE	
BY	
REVISIONS	
NO. 1	
NO. 2	
NO. 3	
NO. 4	
NO. 5	
NO. 6	
NO. 7	
NO. 8	
NO. 9	
NO. 10	
NO. 11	
NO. 12	
NO. 13	
NO. 14	
NO. 15	
NO. 16	
NO. 17	
NO. 18	
NO. 19	
NO. 20	
NO. 21	
NO. 22	
NO. 23	
NO. 24	
NO. 25	
NO. 26	
NO. 27	
NO. 28	
NO. 29	
NO. 30	
NO. 31	
NO. 32	
NO. 33	
NO. 34	
NO. 35	
NO. 36	
NO. 37	
NO. 38	
NO. 39	
NO. 40	
NO. 41	
NO. 42	
NO. 43	
NO. 44	
NO. 45	
NO. 46	
NO. 47	
NO. 48	
NO. 49	
NO. 50	



FILE NAME = 118746-wht-pp1.dgn	USFR NAME =	DESIGNED - J.W.F.	REVISED -	<b>STATE OF ILLINOIS</b> <b>LIVINGSTON COUNTY HIGHWAY DEPARTMENT</b>	<b>PLAN &amp; PROFILE</b> SCALE: H20xV5 SHEET NO. 1 OF 1 SHEETS STA. 7+00 TO STA. 13+00	T.R.	SECTION	COUNTY	TOTAL SHEETS	
HAMPTON, LENZINI AND RENWICK, INC.		DRAWN - L.G.C.	REVISED -			29	11-16105-05-BR	LIVINGSTON	21	4
PLCT SCALE =		CHECKED - S.W.M.	REVISED -			NEVADA ROAD DISTRICT				
PLCT DATE = 12/26/2012		DATE = 12/26/12	REVISED -			CONTRACT NO. 87536				