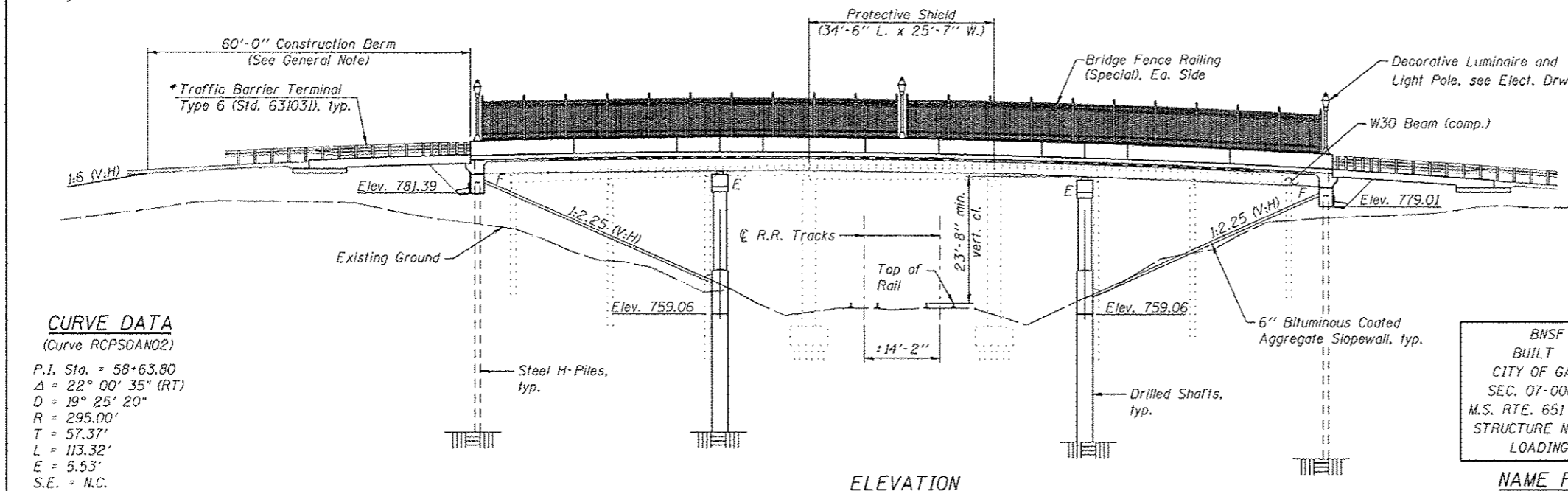


Bench Mark: USGS Disk stamped "RJCE 1959 NO 3 1969" on east side of bridge over north pier - Elev. 787.295.

Existing Structure: S.N. 048-3198 built in 1948, is a seven-span bridge with steel beams in the main span and timber beams in the approach spans supported on spill-thru timber abutments, creosoted timber pier bents, and concrete multicolumn crash wall piers, 145'-6" back to back abutments, 24'-0" face to face curb width and no skew. Traffic will be maintained on the existing structure during construction.

No salvage.



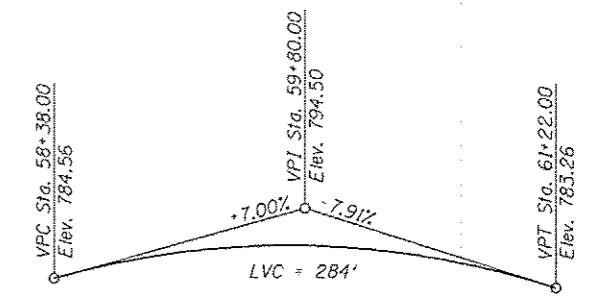
**CURVE DATA**  
(Curve RCP50AN02)

P.I. Sta. = 58+63.80  
 $\Delta = 22^\circ 00' 35"$  (RT)  
 $D = 19^\circ 25' 20"$   
 $R = 295.00'$   
 $T = 57.37'$   
 $L = 113.32'$   
 $E = 5.53'$   
 S.E. = N.C.  
 P.C. Sta. = 58+06.43  
 P.T. Sta. = 59+19.75

\* Traffic Barrier Terminal, Type 6 (Special) at N.E. corner

BNSF R.R.  
 BUILT BY  
 CITY OF GALESBURG  
 SEC. 07-00651-03-BR  
 M.S. RTE. 651 STA. 60+00  
 STRUCTURE NO. 048-6063  
 LOADING HL-93

**NAME PLATE**  
See Std. 515001



**LOADING HL-93**  
Allow 50#/sq. ft. for future wearing surface.

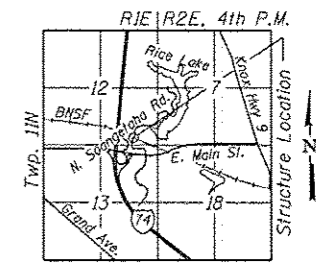
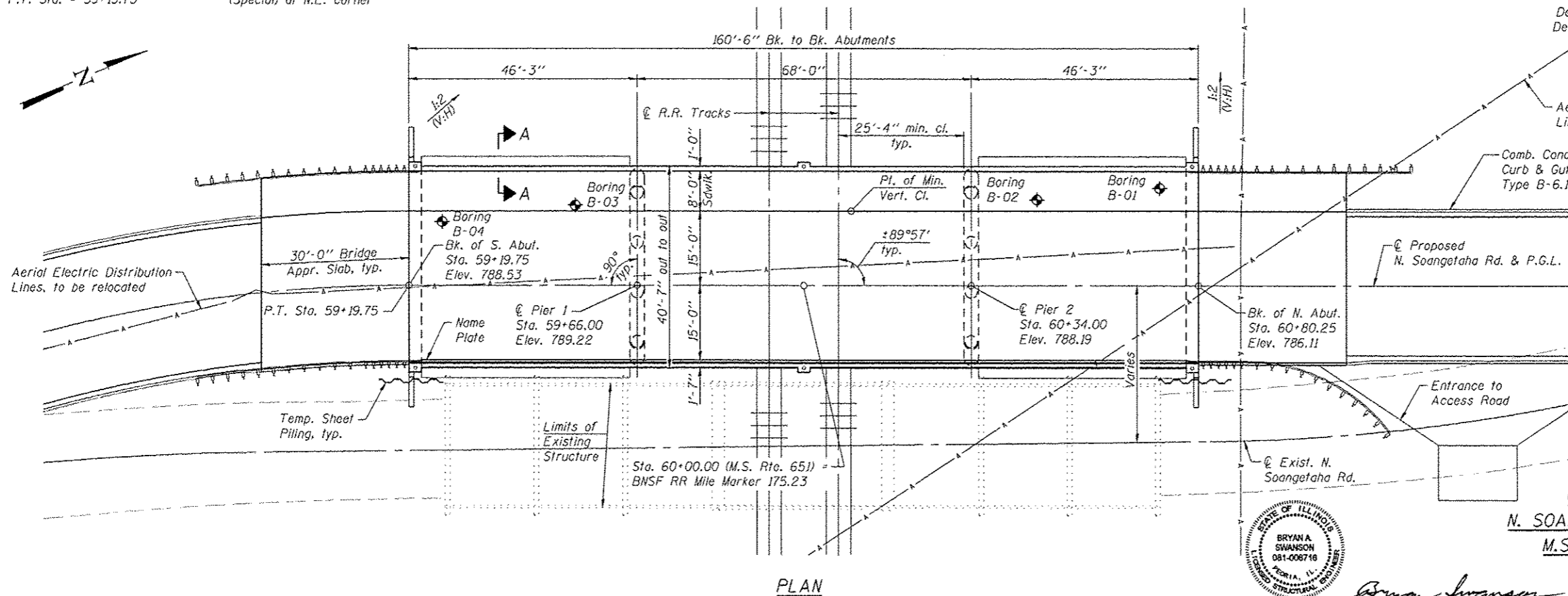
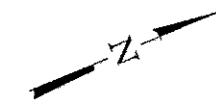
**DESIGN SPECIFICATIONS**  
2010 AASHTO LRFD Bridge Design Specifications, 5th Edition, with 2010 Interims

**DESIGN STRESSES**  
**FIELD UNITS**

$f'_c = 3,500$  psi  
 $f_y = 60,000$  psi (Reinforcement)  
 $f_y = 50,000$  psi (M270 Grade 50) (primary)  
 $f_y = 36,000$  psi (M270 Grade 36)

**SEISMIC DATA**

Seismic Performance Zone (SPZ) = 1  
 Design Spectral Acceleration at 1.0 sec. ( $S_{a1}$ ) = 0.101g  
 Design Spectral Acceleration at 0.2 sec. ( $S_{a5}$ ) = 0.150g  
 Soil Site Class = D



**GENERAL PLAN AND ELEVATION**  
**N. SOANGETAHA ROAD OVER BNSF RAILROAD**  
 M.S. RTE. 651 SEC. 07-00651-03-BR



*Bryan A. Swanson*  
 Date Signed: 1/03/2013  
 Exp. Date: 11/30/2014

KNOX COUNTY  
 STA. 60+00.00  
 STRUCTURE NO. 048-6063

FILE NAME: 0486063-07625-001-0PE.dgn  
**MAURER-STUTZ**  
 ENGINEERS SURVEYORS

USER NAME: baswanson  
 PLOT SCALE:  
 PLOT DATE: 1/3/2013

DESIGNED: LVM  
 CHECKED: BAS  
 DRAWN: SOM  
 CHECKED: BAS

REVISED:  
 REVISED:  
 REVISED:  
 REVISED:



**CITY OF GALESBURG**

SHEET NO. 1 OF 26 SHEETS

M.S.	SECTION	COUNTY	TOTAL SHEETS	SHEET NO.
651	07-00651-03-BR	KNOX	67	29
			CONTRACT NO. 89625	