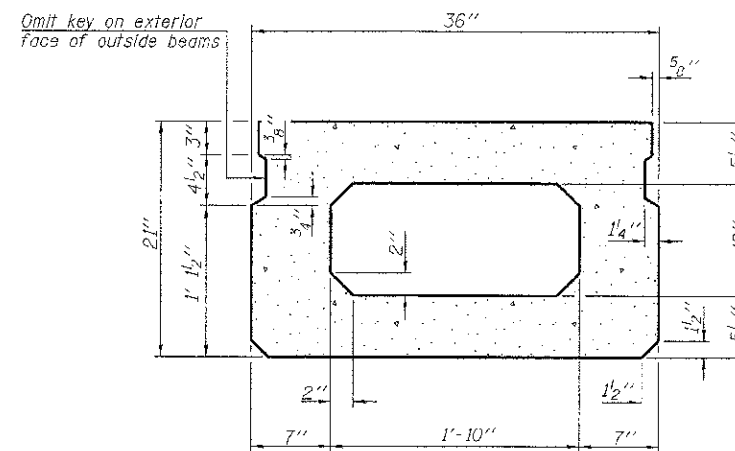
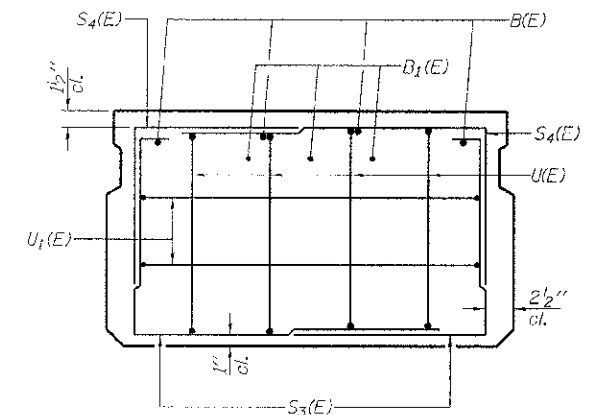


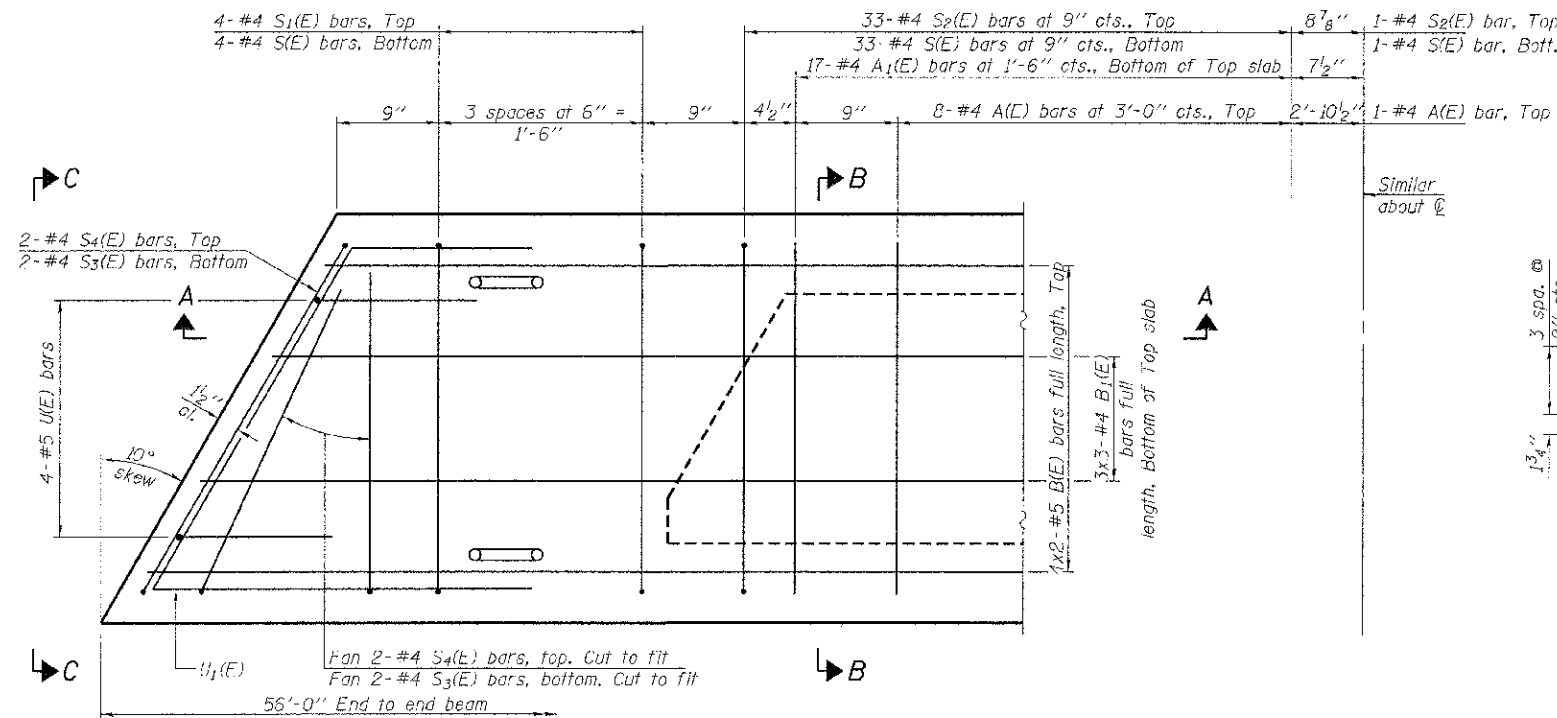
SECTION A-A



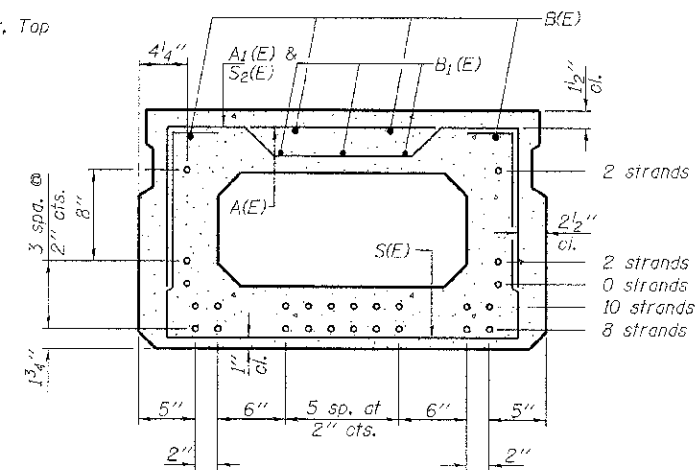
SECTION B-B
(Showing dimensions)



VIEW C-C



PLAN VIEW



SECTION B-B
(Showing reinforcement and permissible strand locations)

Note: Place the number of strands specified in each row symmetrically about the centerline of beam in the permissible strand locations shown.

**BAR LIST
ONE BEAM ONLY**
(For information only)

Bar	No.	Size	Length	Shape
A(E)	17	#4	2'-7"	—
A1(E)	34	#4	2'-10"	—
B(E)	8	#5	29'-2"	—
B1(E)	9	#4	19'-11"	—
S(E)	75	#4	6'-5"	—
S1(E)	8	#1	4'-11"	—
S2(E)	67	#4	5'-2"	—
S3(E)	8	#4	4'-2"	—
S4(E)	8	#4	3'-5"	—
U(E)	8	#5	4'-0"	—
U1(E)	4	#4	5'-6"	—

Note: See sheet 3 & 4 of 9 for additional details and Bill of Material.

Notes:
Spacing of S(E) and S2(E) bars may be adjusted up to 4" in the immediate area of the transverse tie diaphragms to miss the block outs for the transverse ties.
Bars indicated thus 4x2-#5 etc. indicates 4 lines of bars with 2 lengths per line.

MINIMUM BAR LAP
#4 bar = 2'-0"
#5 bar = 2'-6"

PD-2136-L

7-1-10

FILE NAME = 110296-sh4-brdgedgn	USER NAME =	DESIGNED - A.S.L.	REVISED -	STATE OF ILLINOIS VERMILION COUNTY HIGHWAY DEPARTMENT	21" x 36" PPC DECK BEAM STRUCTURE NO. 092-3523	T.R.	SECTION	COUNTY	TOTAL SHEET	
HAMPTON, LENZINI AND RENWICK, INC. 1305 STEVENS DRIVE, SUITE 201 BIRMINGHAM, AL 35202	PLOT SCALE =	CHECKED - S.W.M.	REVISED -			143	10-15144-00-DR	VERMILION	20	13
ILLINOIS PROFESSIONAL DESIGN FIRM LS 1762 SE 22ND, #2000	PLOT DATE = 10/9/2012	DRAWN - D.A.B.	REVISED -			PILOT ROAD DISTRICT		CONTRACT NO. 91472		
		CHECKED - S.W.M.	REVISED -			SHEET NO. 2 OF 9 SHEETS		ILLINOIS FED. AID PROJECT		