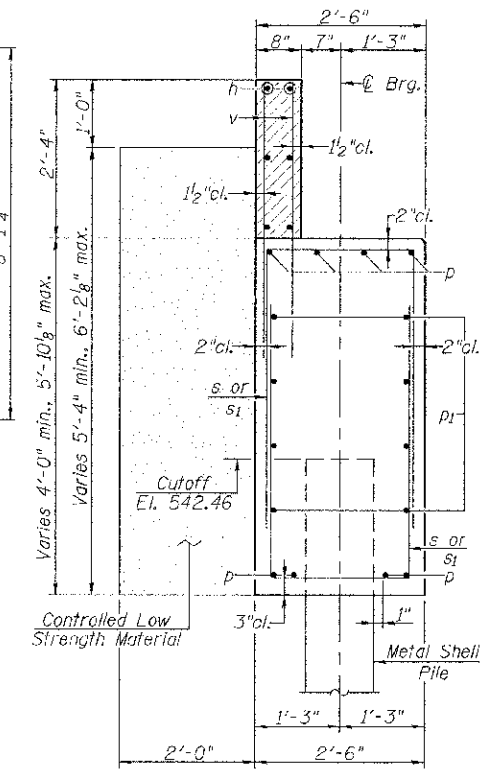


ELEVATION
(W. Abut. Looking West)



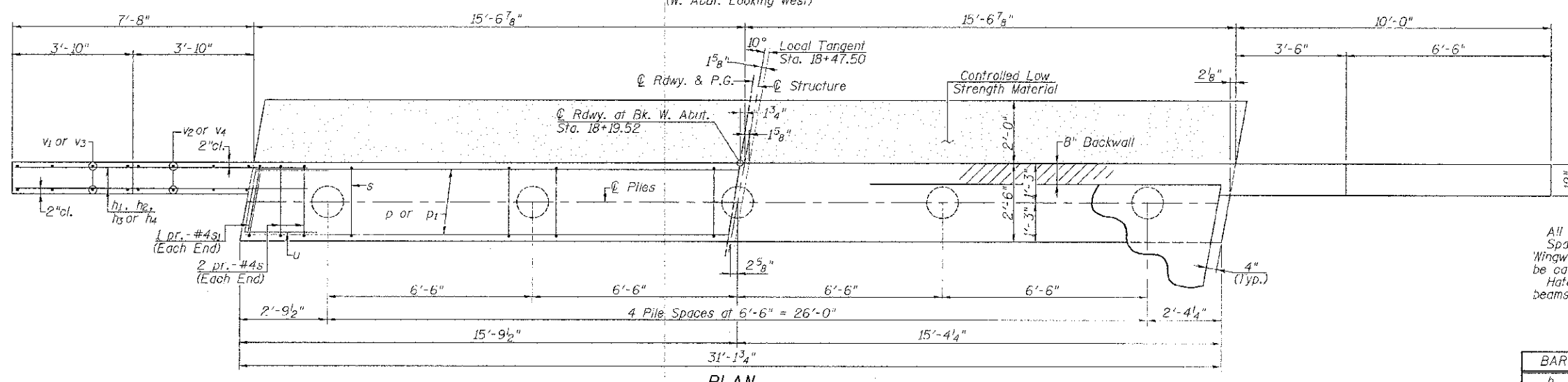
SECTION THRU ABUTMENT

NOTES

All exposed edges shall have standard 3/4" chamfer.
Space reinforcement in cap to miss beam anchor dowels.
Wingwalls and Backwalls may, at the contractor's option, be cast monolithically.
Hatched area and wingwalls shall be poured after deck beams are anchored in place.

**BILL OF MATERIAL
WEST ABUTMENT**

BAR	NO.	SIZE	LENGTH	SHAPE
h	6	#4	34'-0"	—
h1	12	#7	10'-11"	—
h2	6	#4	8'-3"	—
h3	14	#7	13'-1"	—
h4	6	#4	10'-9"	—
p	8	#7	30'-9"	—
p1	8	#5	30'-9"	—
s	56	#4	9'-4"	□
s1	4	#4	9'-5"	□
u	12	#6	10'-2"	□
v	62	#4	3'-9"	—
v1	4	#4	9'-11"	—
v2	8	#4	5'-11"	—
v3	7	#4	12'-2"	—
v4	8	#4	7'-5"	—
Structure Excavation			Cu. Yd.	78
Concrete Structures			Cu. Yd.	20.3
Reinforcement Bars			Pound	2485
Furnishing Metal Shell Piles 12"x0.250"			Foot	256
Driving Piles			Foot	256
Test Pile Metal Shells			Each	1
Controlled Low Strength Material			Cu. Yd.	14.4

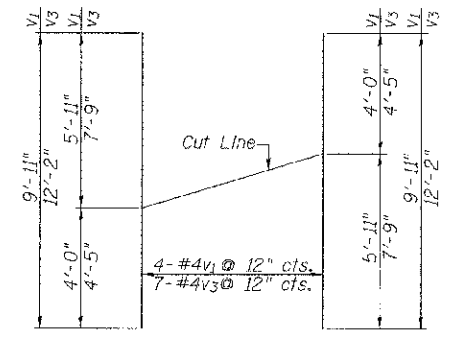


PLAN

PILE DATA

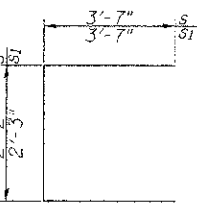
W. Abut.
Metal Shell Piles
12"φ x 0.25" walls

Nominal Required Bearing: 284 Kips
Factored Resistance Available: 156 Kips
Estimated Pile Length: 64'
Number of Production: 4
Number of Test Piles: 1

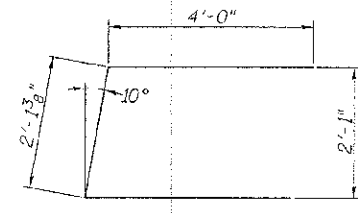


v1 & v3 - BAR CUT DIAGRAM

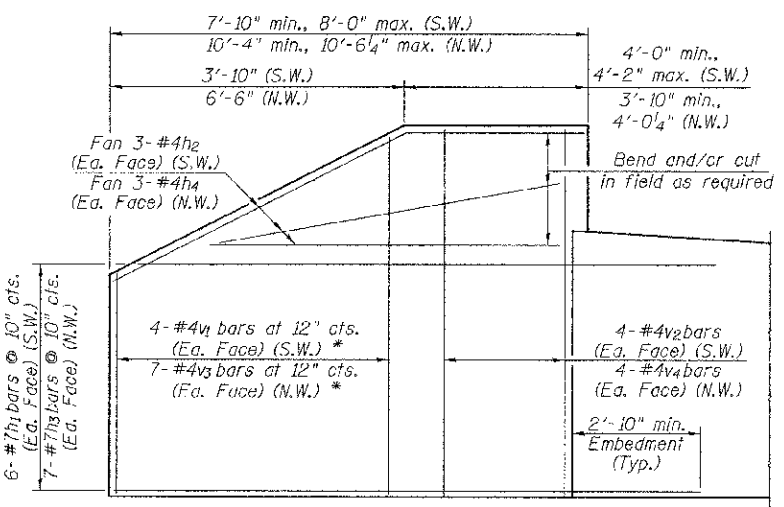
Order v1 & v3 bars full length; Layout in field according to diagram. Cut v1 & v3 bars along cut line. Use remainder of each bar in opposite face.



BARS s & s1



BAR u



WINGWALL ELEVATION
(Showing Reinforcement)

* See v1 & v3 bar cut diagram