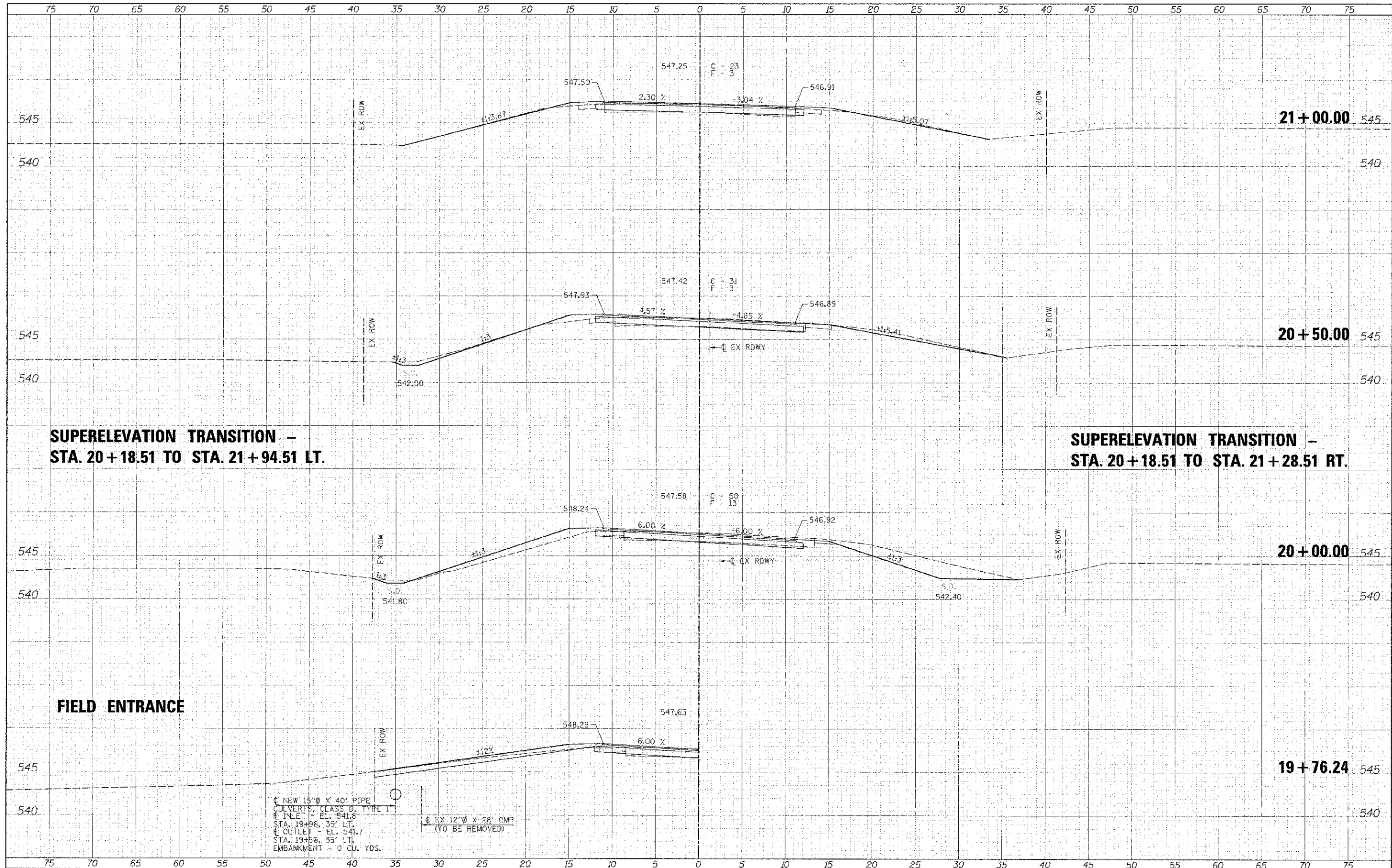


DATE	11/15/06
DESIGNED	AS
DRAWN	AS
CHECKED	AS
DATE	11/15/06

DATE	11/15/06
DESIGNED	AS
DRAWN	AS
CHECKED	AS
DATE	11/15/06



**SUPERELEVATION TRANSITION -
STA. 20+18.51 TO STA. 21+94.51 LT.**

**SUPERELEVATION TRANSITION -
STA. 20+18.51 TO STA. 21+28.51 RT.**

FIELD ENTRANCE

NEW 15'0" X 40' PIPE
CULVERTS, CLASS D, TYPE 1
INLET - EL. 541.8
STA. 19+96.35' LT.
OUTLET - EL. 541.7
STA. 19+56.35' LT.
EMBANKMENT - 0 CU. YDS.

EX 12'0" X 28' CMP
(TO BE REMOVED)

DESIGNED	REVISIONS
DRAWN	REVISIONS
CHECKED	REVISIONS
DATE	REVISIONS

Allen Henderson & Associates, Inc.
Civil and Structural Engineers Springfield, IL
62703 Phone: (217)544-8033 IL Design Firm
No. 184-001907

CROSS SECTIONS
SCALE: 1" = 5'
SHEET NO. 17 OF 18 SHEETS
STA. 19+76.24 TO STA. 21+00.00

SECTION	COUNTY	TOTAL SHEETS
11-00064-00-BR	MENARD	18
CONTRACT NO. 93586		17