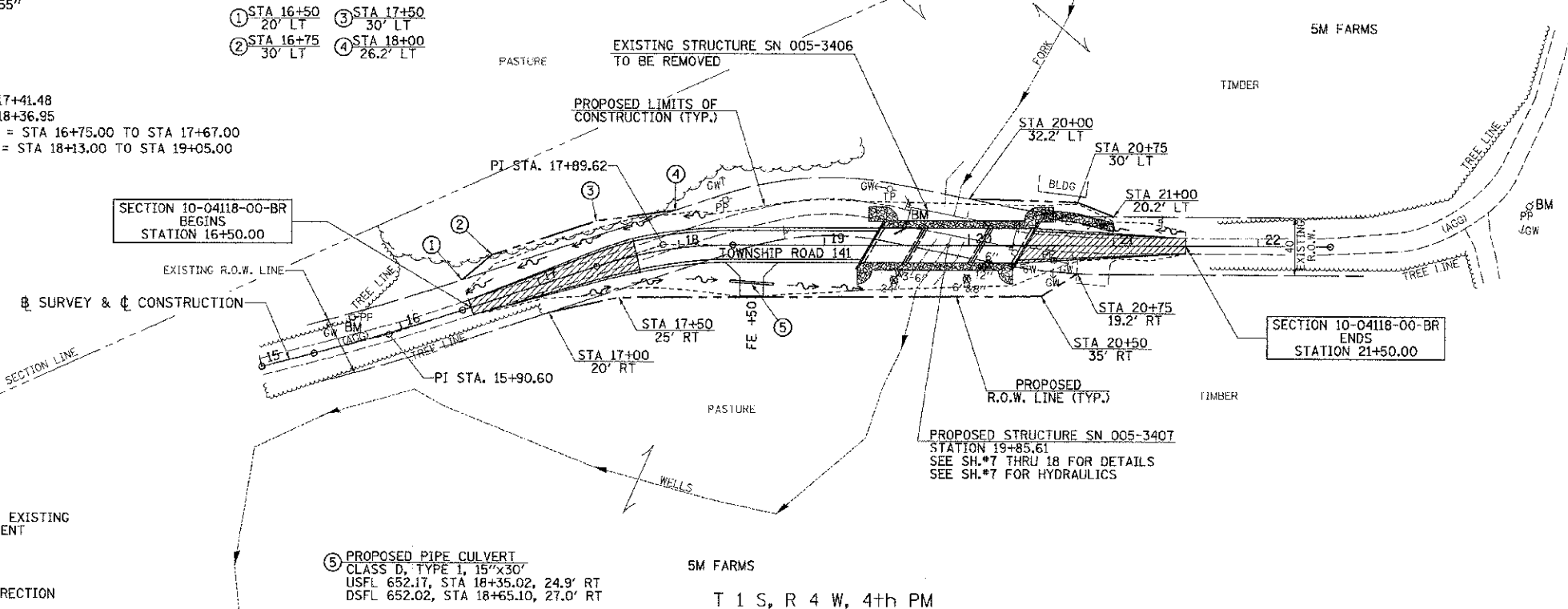


CURVE DATA #1
 PI STA. = 15+90.60
 $\Delta = 3^\circ 56' 53''$ (LT)
 $D = 3^\circ 41' 47''$
 $R = 1,550.00'$
 $T = 53.42'$
 $L = 106.81'$
 $E = 0.92'$
 $e = 4.0\%$
 P.C. STA. = 15+37.18
 P.T. STA. = 16+43.99

CURVE DATA #2
 PI STA. = 17+89.62
 $\Delta = 18^\circ 13' 58''$ (RT)
 $D = 19^\circ 05' 55''$
 $R = 300.00'$
 $T = 48.14'$
 $L = 95.47'$
 $E = 3.84'$
 $e = 4.0\%$
 P.C. STA. = 17+41.48
 P.T. STA. = 18+36.95
 SE ATTAINED = STA 16+75.00 TO STA 17+67.00
 SE REMOVED = STA 18+13.00 TO STA 19+05.00

T 1 S, R 4 W, 4th PM
 SECTION 29

T 1 S, R 4 W, 4th PM
 SECTION 32

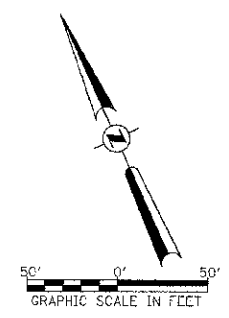


LEGEND

120' TRANSITION TO OR FROM EXISTING TO PROPOSED TYPICAL PAVEMENT

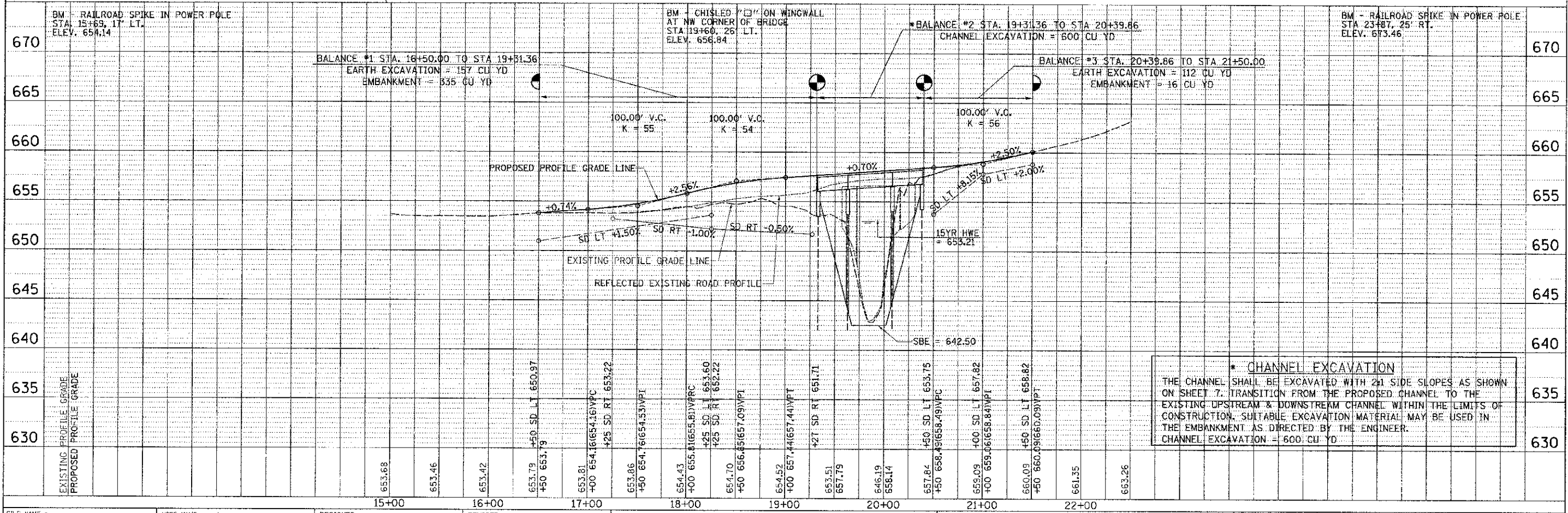
PROPOSED RIPRAP PLACEMENT

SPECIAL DITCH WITH FLOW DIRECTION



DATE	
BY	
REVISION	
NO.	
DATE	
BY	
REVISION	
NO.	
DATE	
BY	
REVISION	
NO.	

DATE	
BY	
REVISION	
NO.	
DATE	
BY	
REVISION	
NO.	
DATE	
BY	
REVISION	
NO.	



*** CHANNEL EXCAVATION**
 THE CHANNEL SHALL BE EXCAVATED WITH 2:1 SIDE SLOPES AS SHOWN ON SHEET 7. TRANSITION FROM THE PROPOSED CHANNEL TO THE EXISTING UPSTREAM & DOWNSTREAM CHANNEL WITHIN THE LIMITS OF CONSTRUCTION. SUITABLE EXCAVATION MATERIAL MAY BE USED IN THE EMBANKMENT AS DIRECTED BY THE ENGINEER.
 CHANNEL EXCAVATION = 600 CU YD

FILE NAME =	USER NAME = ethompa	DESIGNED -	REVISED -	BROWN COUNTY TOWNSHIP ROAD 141 OVER WELLS FORK	PLAN AND PROFILE	RTE.	SECTION	COUNTY	TOTAL SHEETS	SHEET NC.	
V:\Bridge\3017 - Brown\3017P001.dgn		DRAWN -	REVISED -			TR 141	10-04118-00-BR	BROWN	24	6	
		CHECKED -	REVISED -			CONTRACT NO. 93588					
		DATE -	REVISED -			FED. ROAD DIST. NO. 7 ILLINOIS FED. AID PROJECT BR05-0099(221)					